



---

**Turbine Drive Water-Reels®  
Engine Drive Slurry-Reels**

---

T40A/2  
E40A/2  
**(FG1)**

# Parts Manual

Serial No. 340,000 - 359,999

**SEE IMPORTANT NOTE ON PAGE 2  
BEFORE ORDERING PARTS**



**AG-RAIN®**

700 S. Schrader Ave.  
Havana, Illinois 62644  
Phone: 309-543-4425  
Fax: 309-543-4945

# **IMPORTANT NOTE!**

**There are two possible drive trains on this series of machines. When ordering parts for drive train OR gearbox, it is important to note if your machine does OR does not have a brake drum**

<b>Assembly</b>	<b>Page</b>
Running Gear Assembly	3-4
Cradle Assembly	5-6
Spool Assembly	7-9
Levelwind Assembly	10-11
Boom Assembly / Shut Off	12
Shield Group	13
Turbine Assembly	14-16

## **NO BRAKE DRUM**

Drive Train Group <b>WITHOUT</b> Brake Drum	17-18
Gearbox for Drive Train Group <b>WITHOUT</b> Brake Drum	19-20

## **WITH BRAKE DRUM**

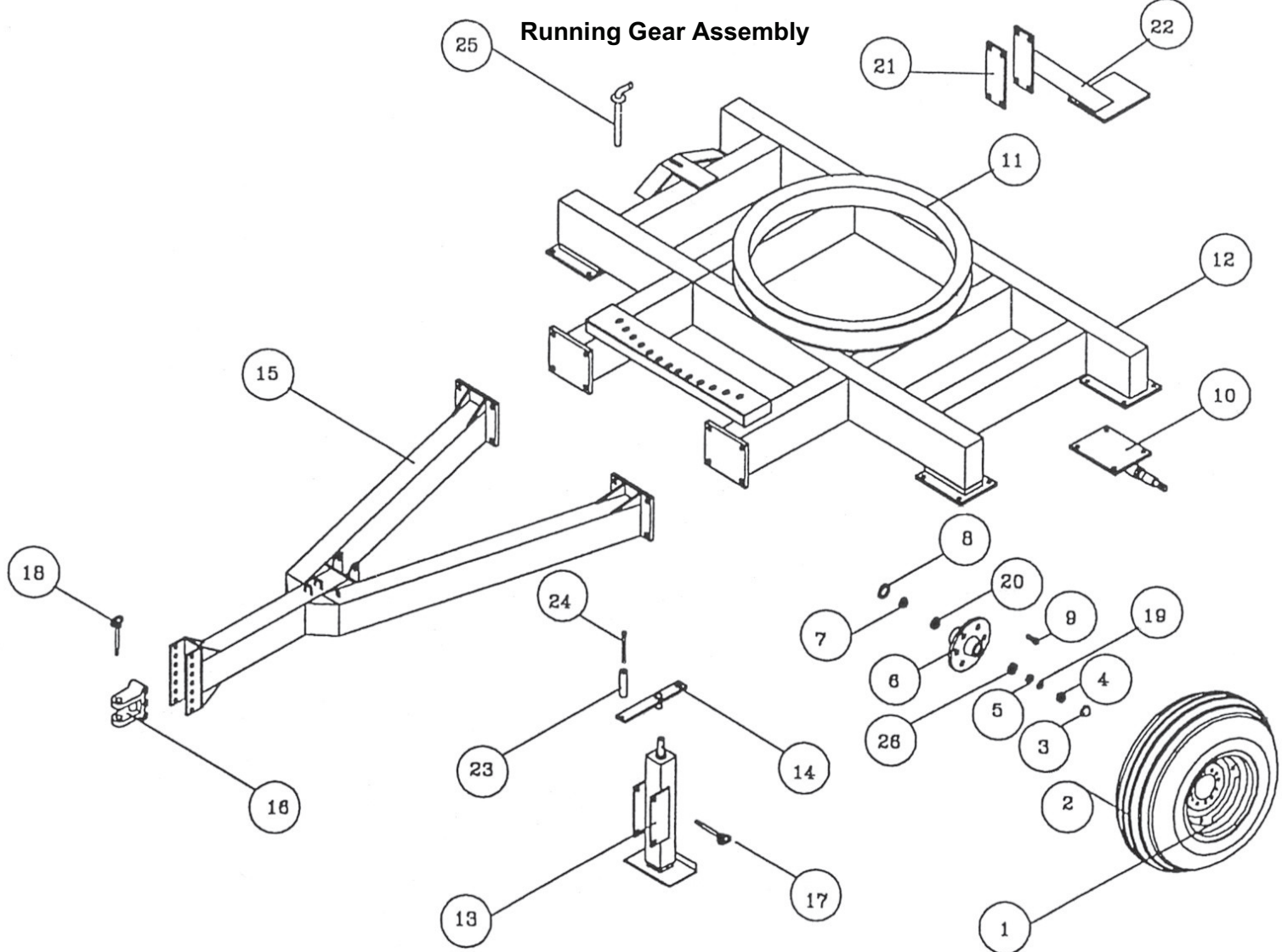
Drive Train Group <b>WITH</b> Brake Drum	21-23
Gearbox for Drive Train Group <b>WITH</b> Brake Drum	24-26

Sprinkler Cart Assembly	27-29
Mechanical Engine Drive Assembly	30-31

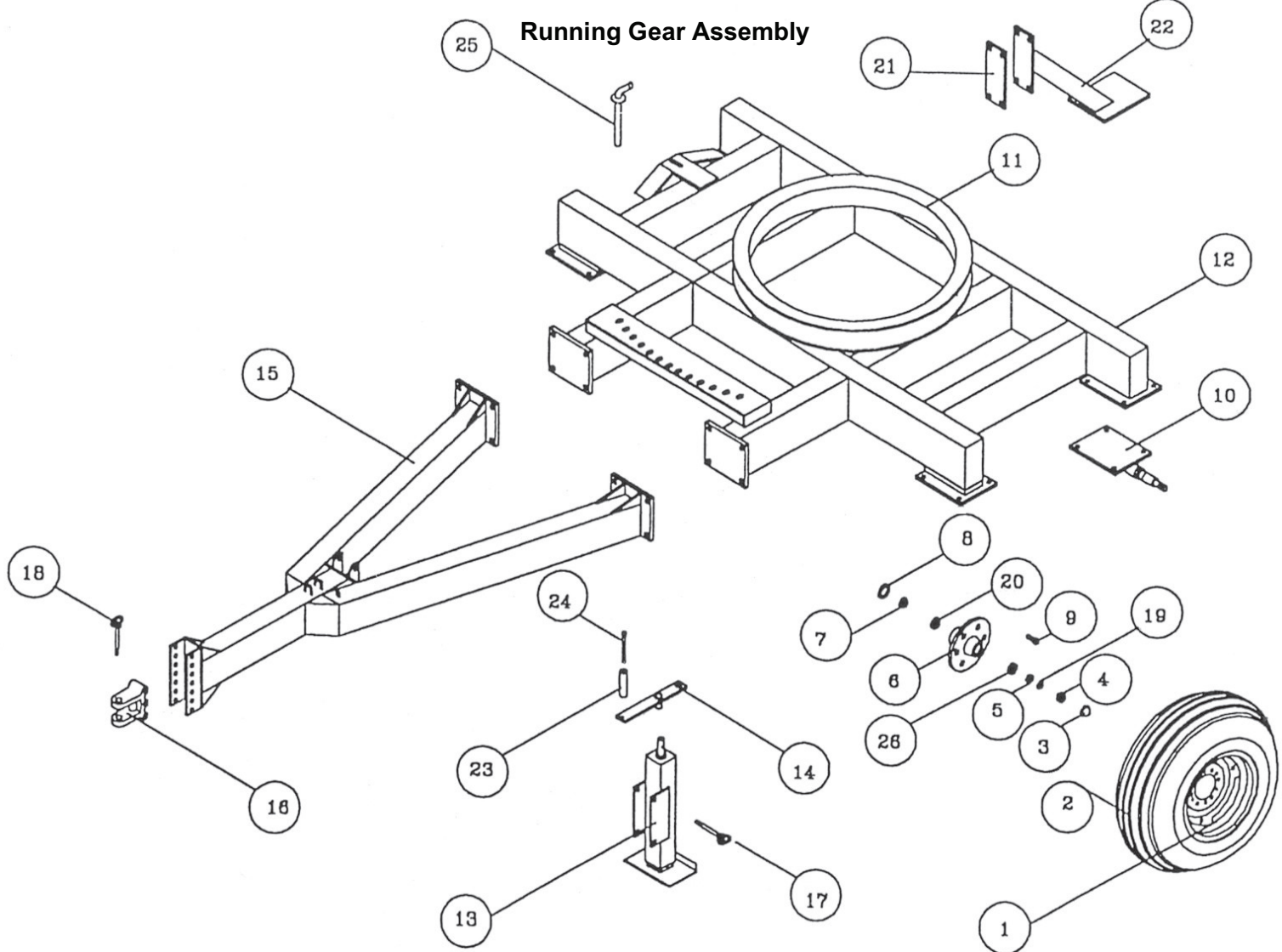
### Notes:

For Parts That Are Described As "Left" Or "Right" The Water Inlet Side Of The Machine Is Considered The Right Side.

Items Such As Common Fasteners, Grease Fitting, And Other Small Parts Easy To Acquire Locally Are Not Listed.

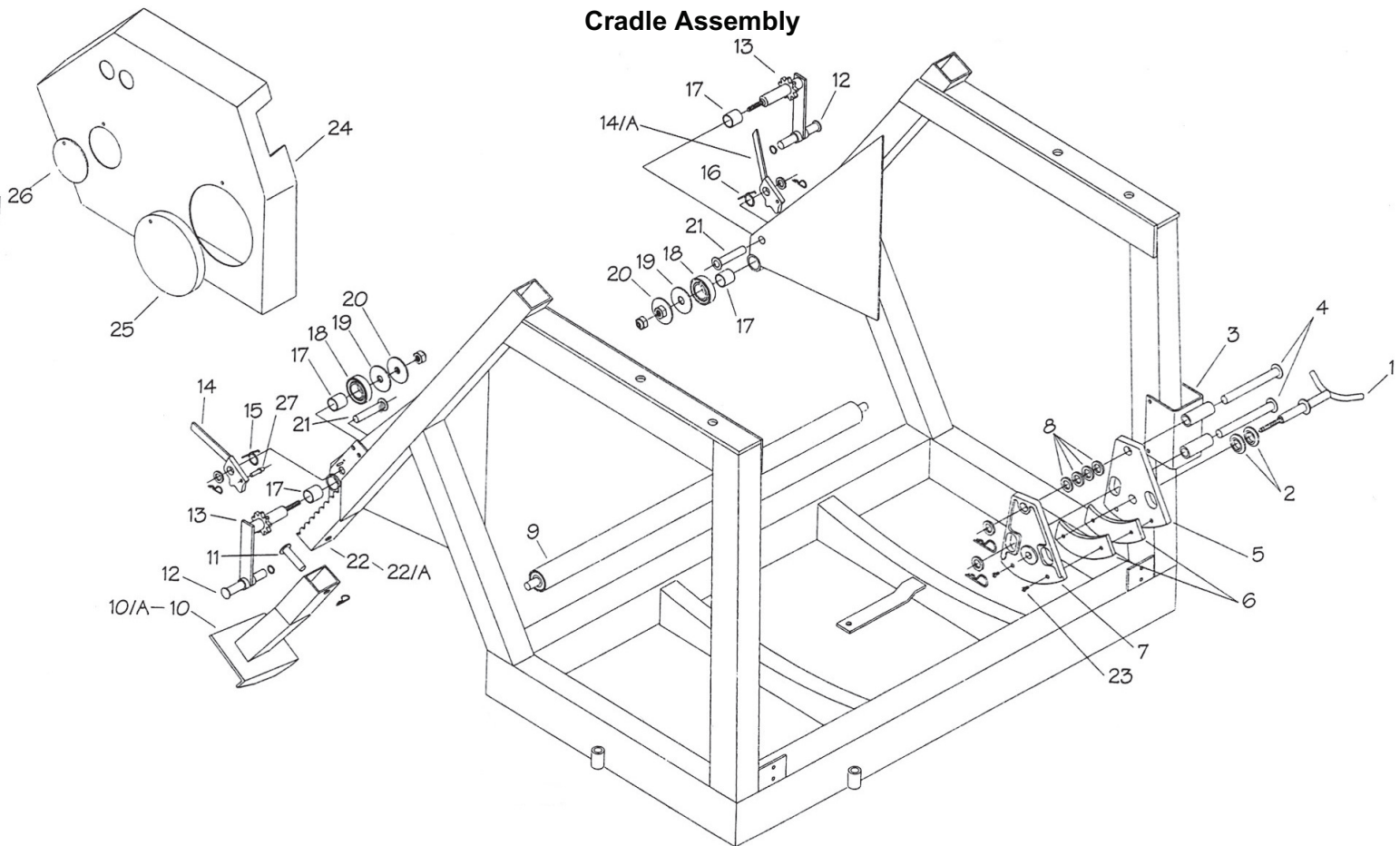


Running Gear Assembly			
No.	Part Number	Description	Qty.
1A	227-5013-1	Wheel, 6 Bolt x 15" x 8"	4
1B	526-5138-1	Wheel, 6 Bolt x 15" x 10" (Optional)	4
2A	526-5531-0	Tire, 11L-15, 12 Ply	4
2B	526-5137-0	Tire, 12.5L-15, 12Ply	4
3	589-0206-0	Cap, Hub Wilton 90903	4
4	589-0207-0	Nut, 7/8" NF Slotted Wilton 912952	4
5	589-0204-0	Bearing, Outer LM25877	4
6A	589-0199-0	Hub, with Races Only Wilton 280581	4
6B	226-1598-2	Hub Assm (Races, Brng, Seal & Hub Cap (Not Shown))	4
7	589-0203-0	Bearing, Inner LM25590	4
8	589-0205-0	Seal, Grease CR20148	4
9	589-0202-0	Bolt, 9/16 Lug Wilton 9135381	24
10	588-0397-1	Spindle Assembly	4
11	020-0177-7	Bearing, Turntable	1
12	596-0139-0	Chassis	1
13	584-0330-0	Jack Assembly	1
14	594-0330-0	Crank, Jack	1



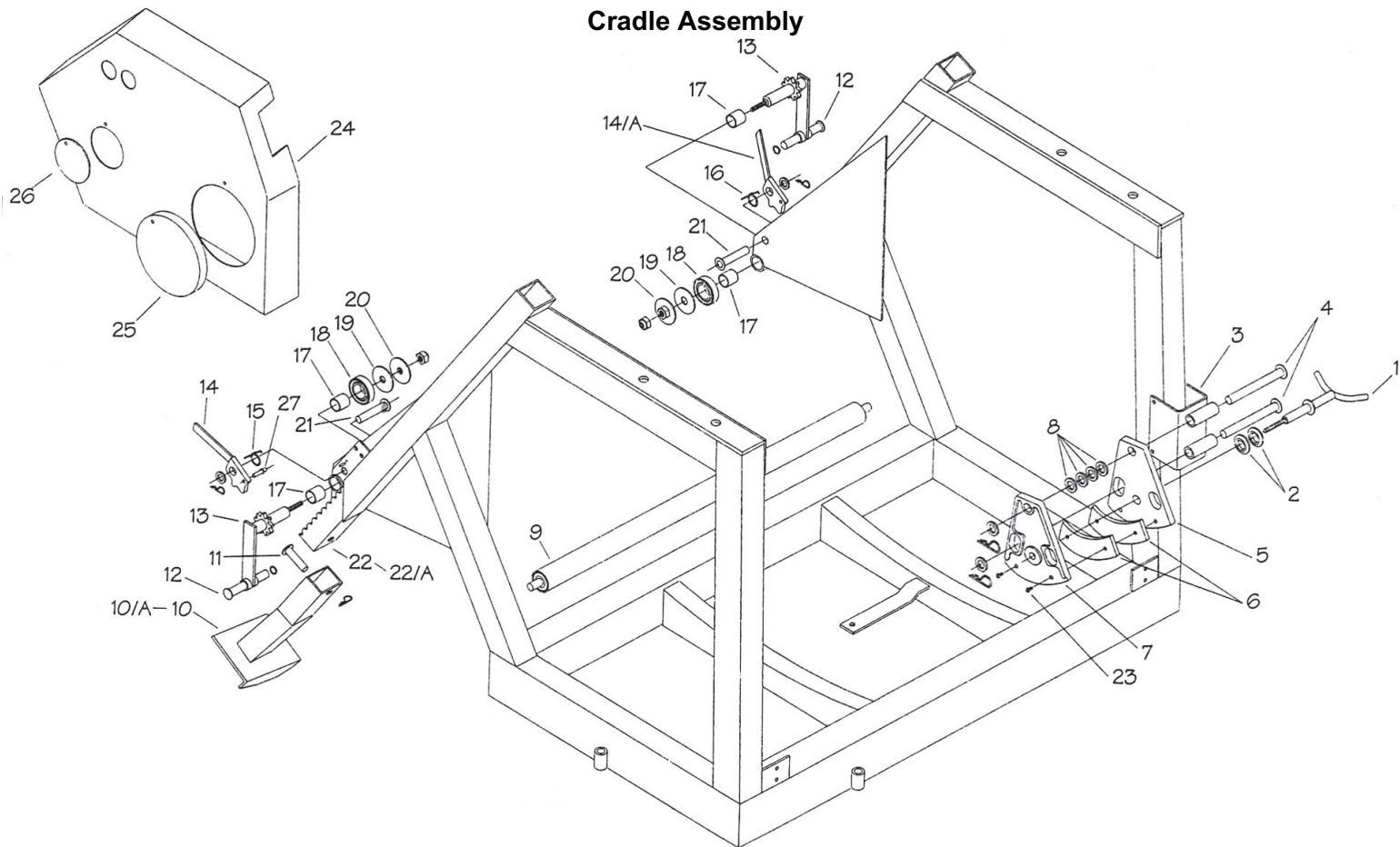
Running Gear Assembly			
No.	Part Number	Description	Qty.
15	593-0140-0	Tongue	1
16	584-0213-0	Hitch, Clevis	1
17	558-3281-1	Pin, 3/4 x 4 1/8 Hitch	1
18	523-5866-0	Pin, 3/4 x 6 1/2 Hitch	1
19	589-0208-0	Washer, Spindle Wilton 91307	4
20	589-0200-0	Race, Inner LM25520	4
21	593-0144-0	Plate	2
22	593-0148-0	Outrigger	2
25	595-0483-0	Pin, 3/4 x 5.75	1
26	589-0201-0	Race, Outer LM25821	4

### Cradle Assembly

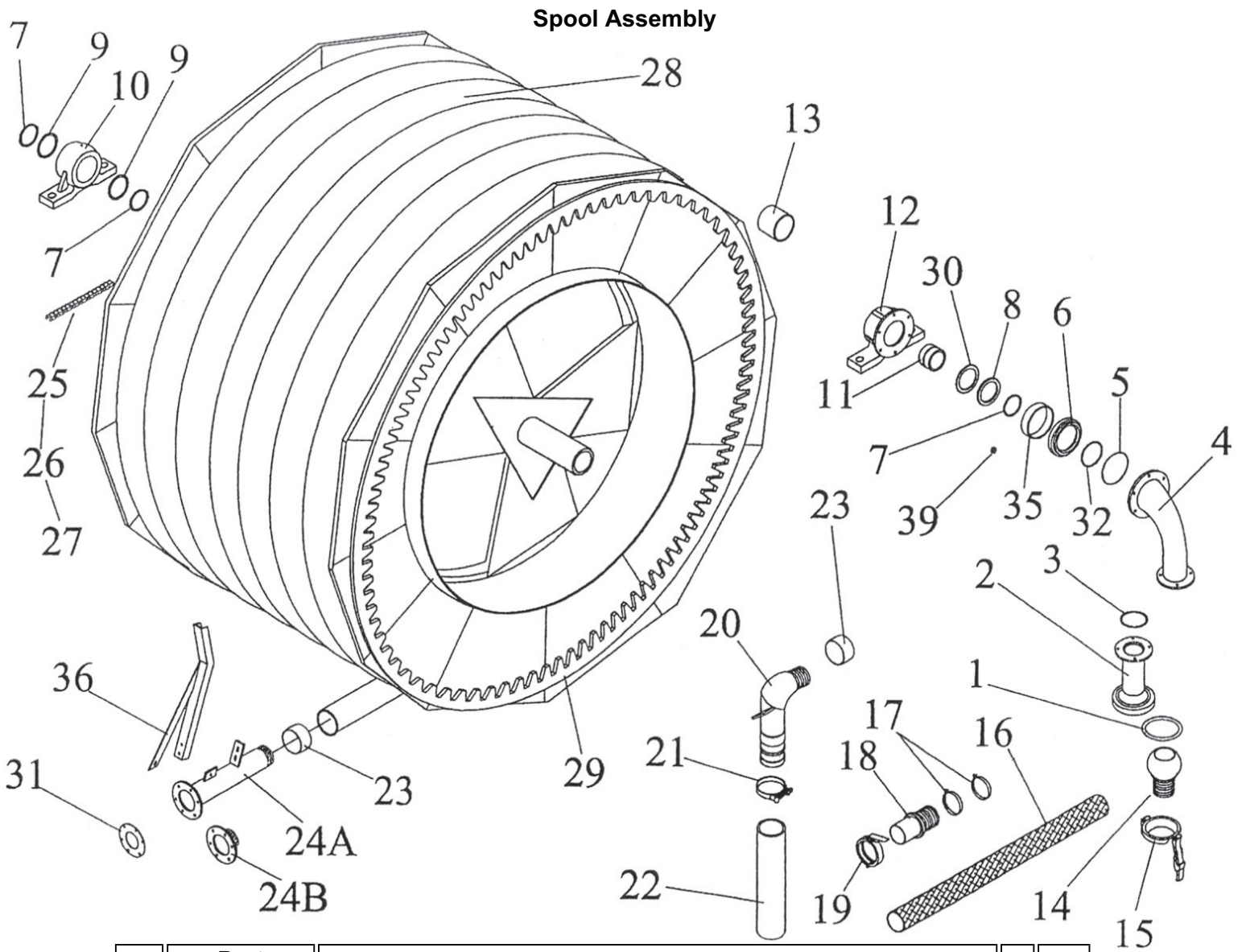


No.	Part Number	Description	Qty.
1	022-0159-0	SCREW,BRAKE CONTROL	1
2	022-0156-0	WASHER,BRAKE SPRING	2
3	022-0448-2	BRAKE MT. ( FG1 )	1
4	022-0453-2	PIN,20MM X 216MM	2
5	022-0158-1	PLATE,BRAKE	1
6	022-0454-0	BRAKE PAD	2
7	022-0157-1	PLATE,THREADED BRAKE	1
8		WASHER DIA. 20	4
9	020-0279-4	Roller, Horizontal (Base FG1 & FF1)	1
9a	022-0344-0	BEARING,6005-2RS	2
10a	020-9905-5	Stabilizer Foot, Right	1
10b	020-9905-4	Stabilizer Foot, Left	1
11	020-9905-3	Pin, Stabilizer Foot	2
12	020-9904-8	Handle	2
13	020-9905-7	Crank	2
14a	020-9902-7	Pawl, Right	1
14b	021-9902-7	Pawl, Left	1
15	020-9902-8	Spring, Right	1
16	020-9902-9	Spring, Left	1
17	022-0748-0	Bushing	4
18	020-9905-9	Spring, Rubber	2
19	020-9904-9	Plastic Washer	2

### Cradle Assembly

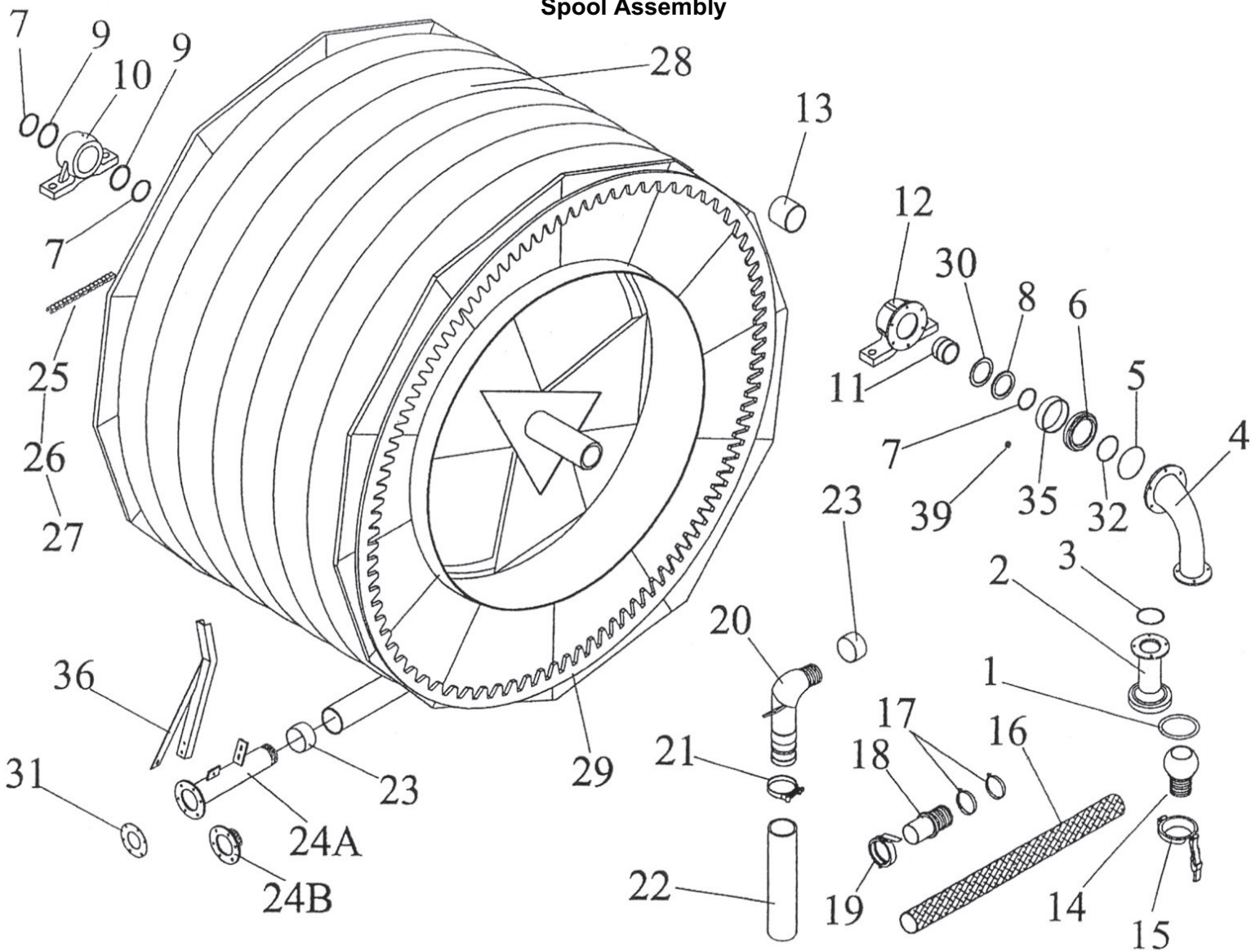


20	020-9905-8	Retaining Nut	2
21	020-9903-0	Pawl Pin	2
22a	020-9905-0	Stabilizer Leg, Right	1
20	020-9905-8	Retaining Nut	2
21	020-9903-0	Pawl Pin	2
22a	020-9905-0	Stabilizer Leg, Right	1
22b	020-9905-1	Stabilizer Leg, Left	1
23	550-7010-0	BOLT,8-1.25MM X 20 BR	1
24	022-0659-0	Hood	1
26	022-0750-0	Cap, Hood	2
27	022-0751-0	Pin	2
28	597-0119-1	Operator Manual Holder (not shown)	1



No.	Part Number	Description	Qty.
1	588-0023-3	O-Ring, 4"	1
2	022-0483-0	Entry Fitting	1
3	022-0484-0	O-Ring	2
4	022-0655-0	Upper Feeding Elbow	1
5A	022-0486-0	O-Ring 190mm x 3mm (Used on Steel Housing Only)	1
5B	465-4850-3	O-Ring 6-3/4" x 6-1/2" x 1/8 (Used on Aluminum Housing only)	1
6A	022-0753-0	Seal Housing (Steel)	1
6B	596-0370-1	Sealing Housing (Aluminum) Used on some models (Not shown)	1
7	022-0044-0	Ring, Snap w/screws	3
8	022-0045-0	Washer, Thrust	1
9	020-0383-2	Spacer	2
10	020-0383-4	Bearing, Spool	1
11	593-0245-2	Ring Nut, Slip Joint	1
12	022-0048-0	Bearing	1
13	022-0487-0	Sleeve	1
14	588-0256-1	Hose End Outlet 4" Ball	1

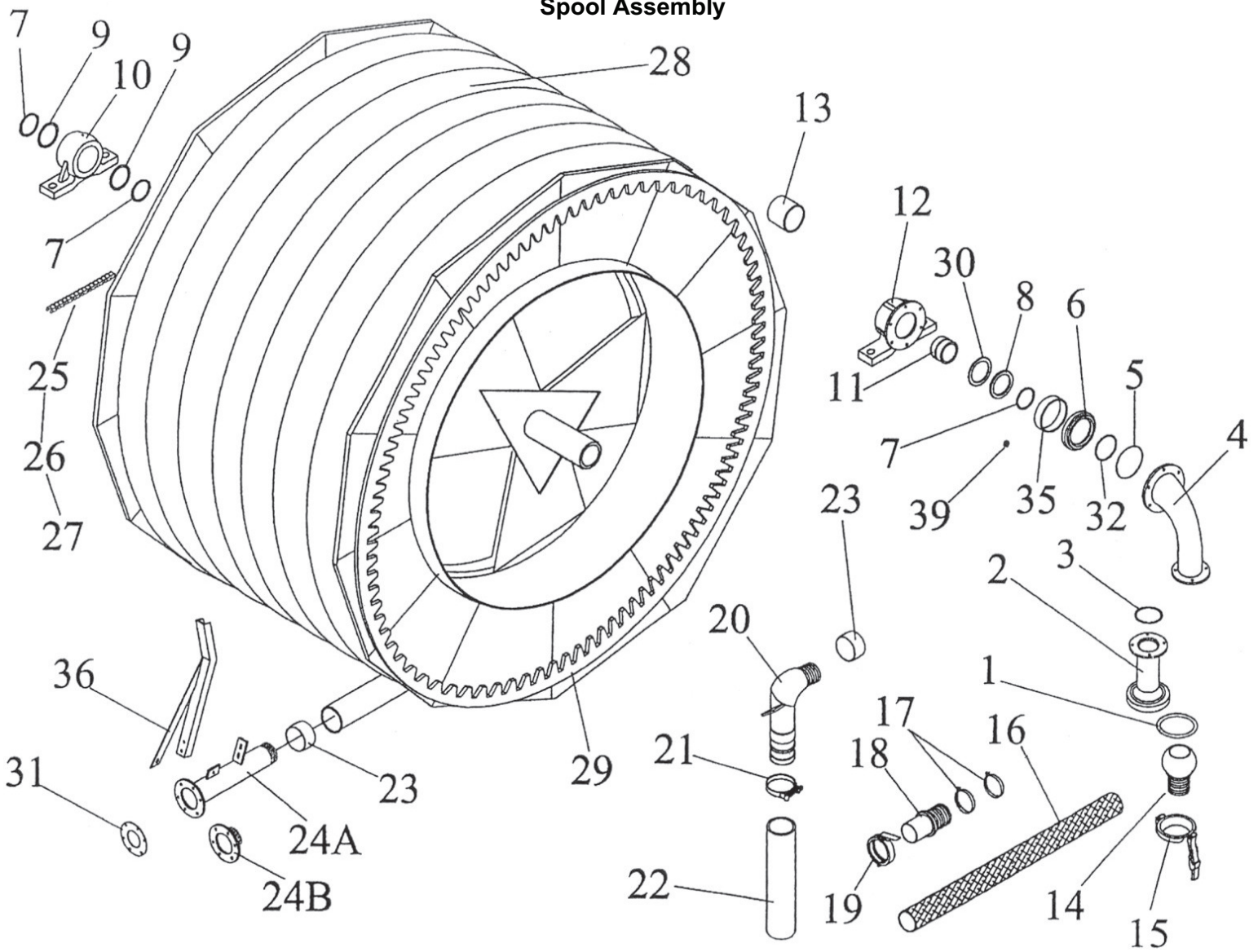
### Spool Assembly



15	588-0023-1	Lever Ring 4" 451 108mm		1
16A	252-4962-0	Hose, Irr Supply 4" ID	Ft.	30
16B	588-0284-0	Hose, Supply Complete Assembly		1
17	030-1924-0	Clamp, Supra 104mm-112mm		4
18	588-0266-0	Hose End Inlet 4"		1
19	400-4927-0	Band, Ring Lock 4"		1
20	022-0656-0	Elbow, PE Tube		1
21	030-1816-7	Clamp, Super 131mm-139mm		4
22	020-0383-1	Hose, 140mm X 4-3/4" ID X 33" Long - FG1		1
23	020-0383-3	Hose Band, 120mm		2
24A	022-0740-0	Tube End, 120mm x Flange		1
24B	020-0383-7	Tube End, with Flange (Used where stop is on cart)		1
25	020-0114-0	Chain, 1/2" Pitch	Ft.	14
26	022-0111-0	Link, Connector 1/2" Pitch		1
27	022-0110-0	Link, Offset 1/2" Pitch		1
28A	584-0173-0	Tube, PE 120mm x 4.0 ID x 1250 Ft. (Standard)		1
28B	584-0173-2	Tube, PE 120mm x 4.0 ID x 1350 Ft. (Optional)		1

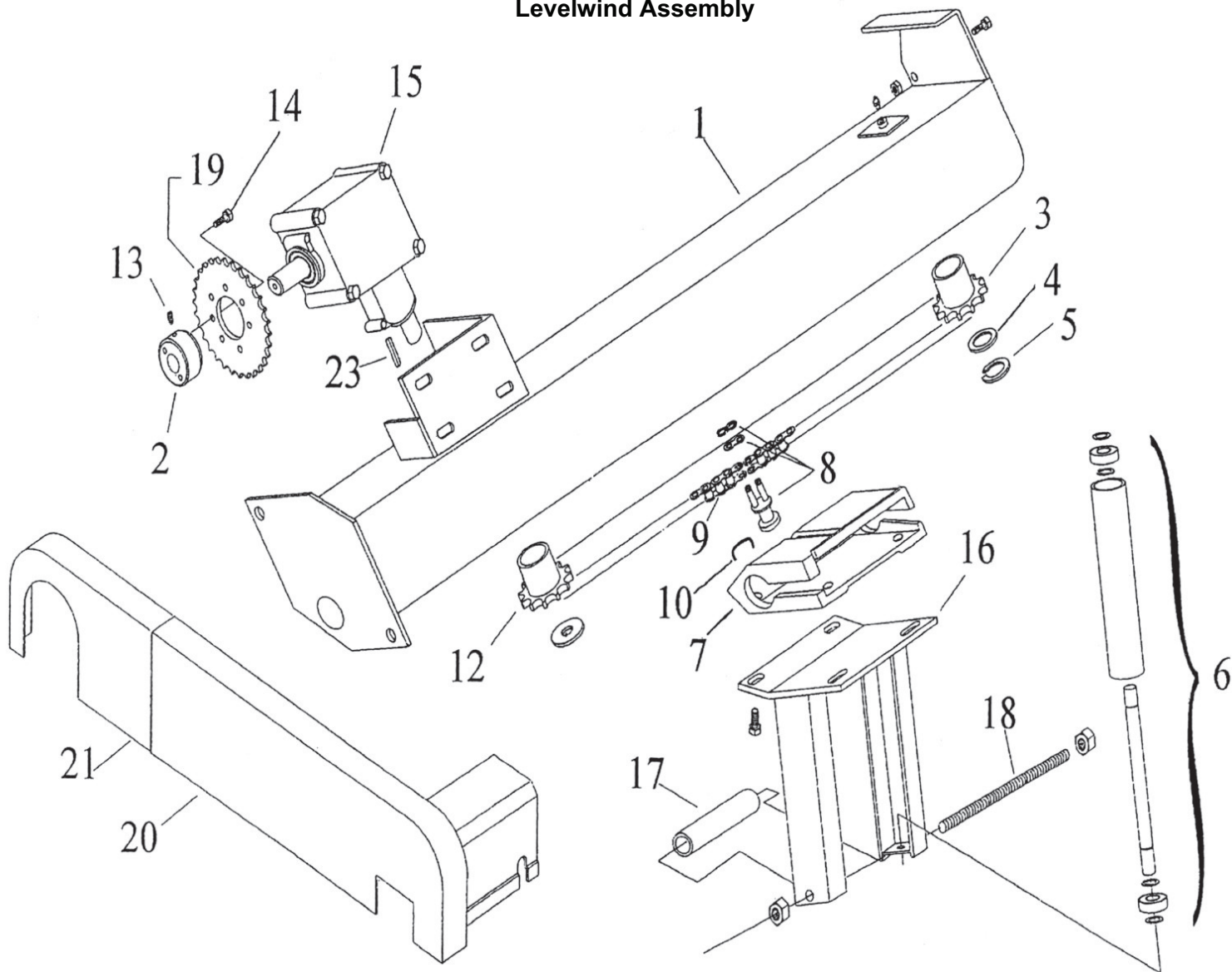


### Spool Assembly



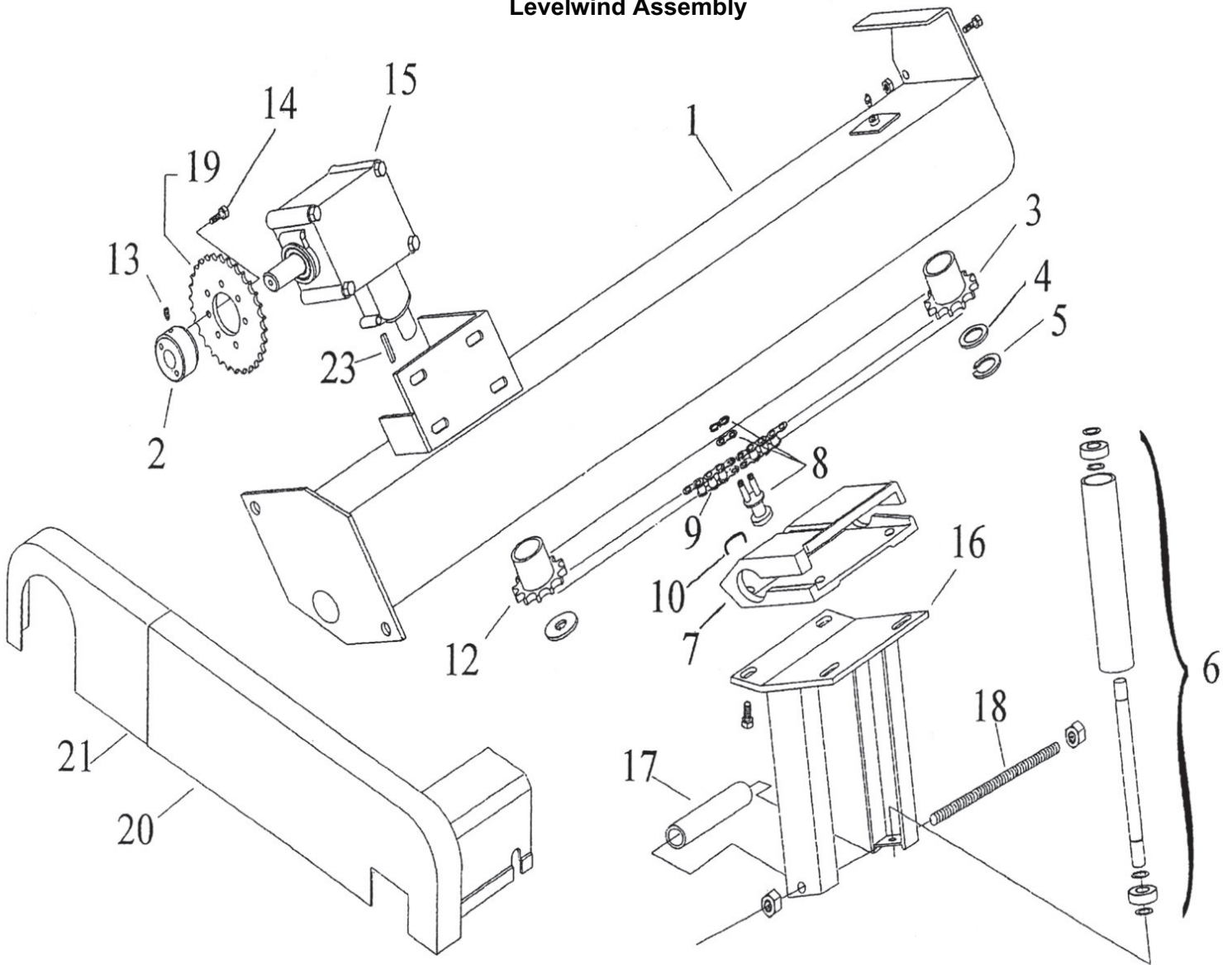
29	022-0658-0	Spool, Base FG1 Gear Drive		1
30	022-0046-0	Washer, Wear		1
31	020-9920-2	Gasket, 6 Hole		1
32	465-4850-2	O-Ring 5-3/4 x 5-1/4 x 1/4		1
35	022-0754-0	Spacer		1
36	022-0741-0	Stop, Bar		1
39	599-0487-0	Bushings, 1"OD x .43 ID x .38 Long		6

## Levelwind Assembly



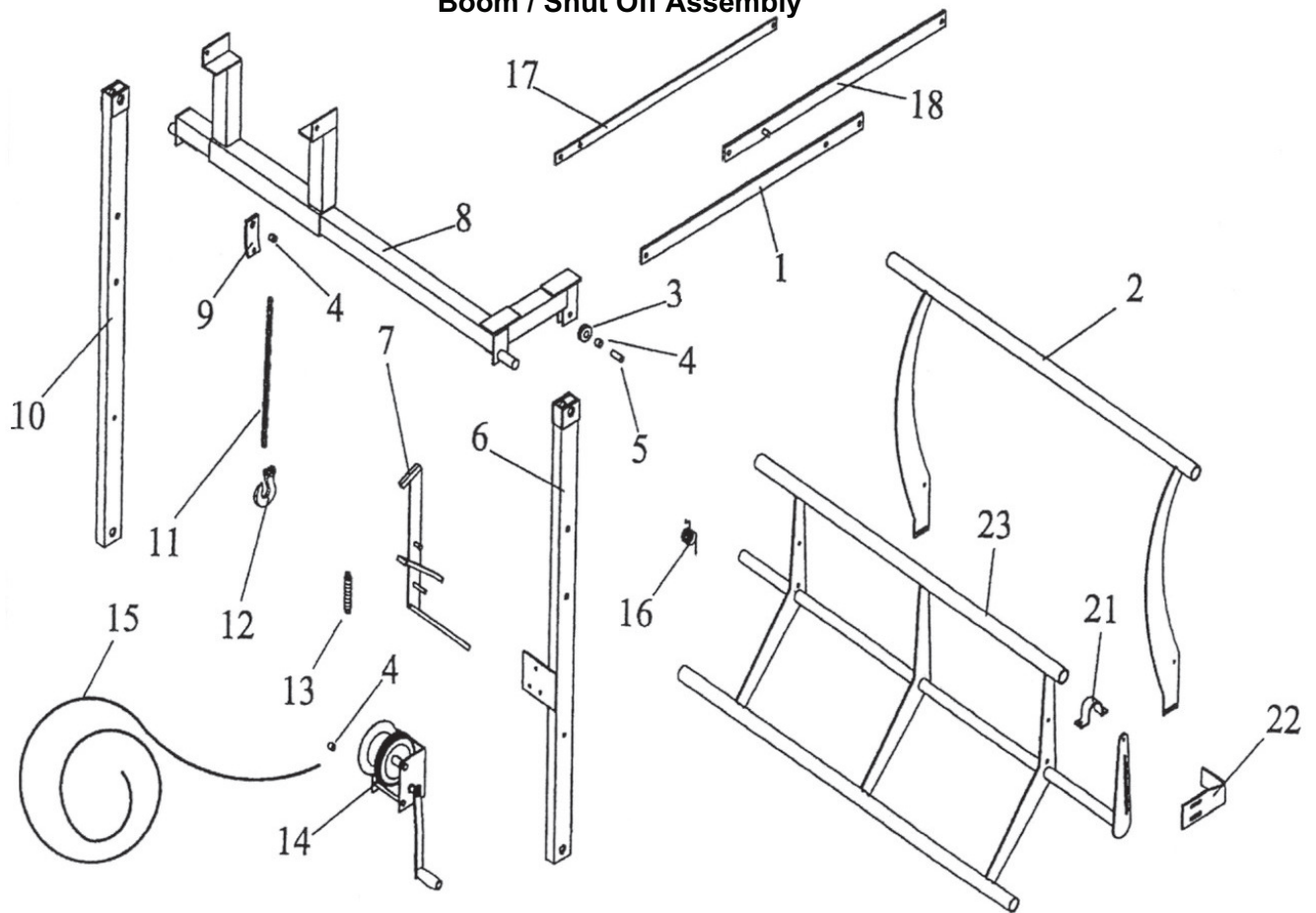
No.	Part Number	Description	Qty.
1A	020-0486-6	Frame, Levelwind (Base FG1)	1
1B	022-0103-0	Levelwind, Assm. Cmpl. W/o 16B	1
2	022-0841-0	Hub, Sprocket	1
3	020-9914-8	Sprocket, 10 Tooth Idler	1
4	553-0628-0	Spacer 1-1/2 x 1 x 18 GA	1
5	526-6254-0	Snap Ring	1
6	022-0387-0	Roller Assembly	2
7	020-0014-1	Fork Support	1
8	020-9914-3	Guide Link	1
9	020-0486-5	Chain, 1.0" (Metric) x 112 Rollers (Base FG1)	1
10	020-0077-6	Retaining Clip	1
11	589-0214-0	Spring Pin, 7mm x 45mm (not shown)	1
12	021-9915-1	Sprocket, 10 Tooth Driver	1
13	020-0015-2	Set Screw	1
14	550-5001-0	Bolt, M8 x 25	2
15	020-0015-4	Angle Drive Gearbox	1

# Levelwind Assembly

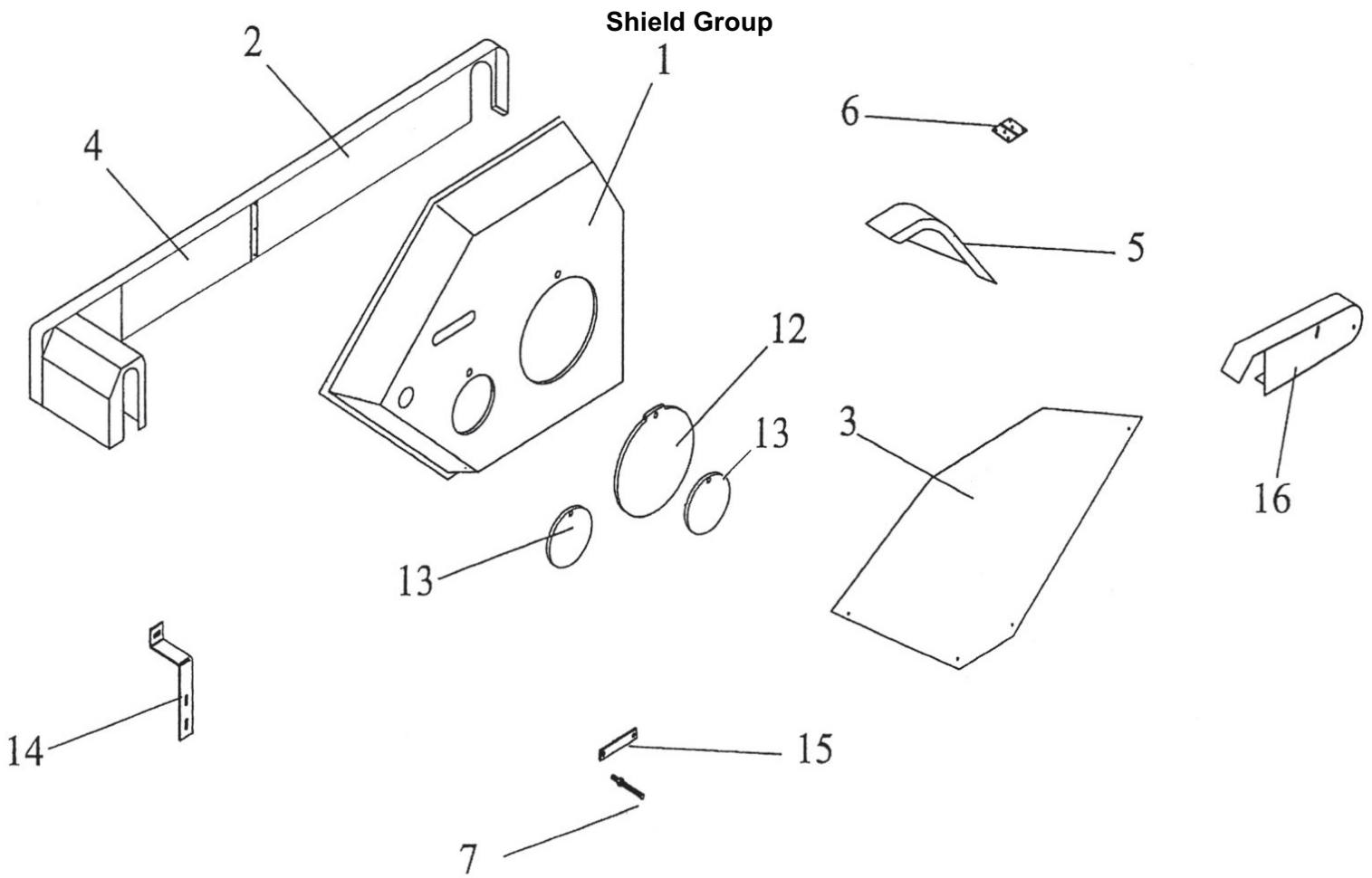


16A	022-0135-0	Fork	1
16B	022-0135-1	Fork Assembly (w/rollers & tie rod)	1
17	022-0136-0	Space	1
18	022-0134-0	Tie Rod	1
19	020-9915-7	Sprocket, 1/2 x 40 Tooth	1
20	022-0122-0	Shield, Levelwind	1
21	022-0123-2	Shield, Chain	1
23	022-0756-0	Key, 8mm x 8mm x 32mm	1

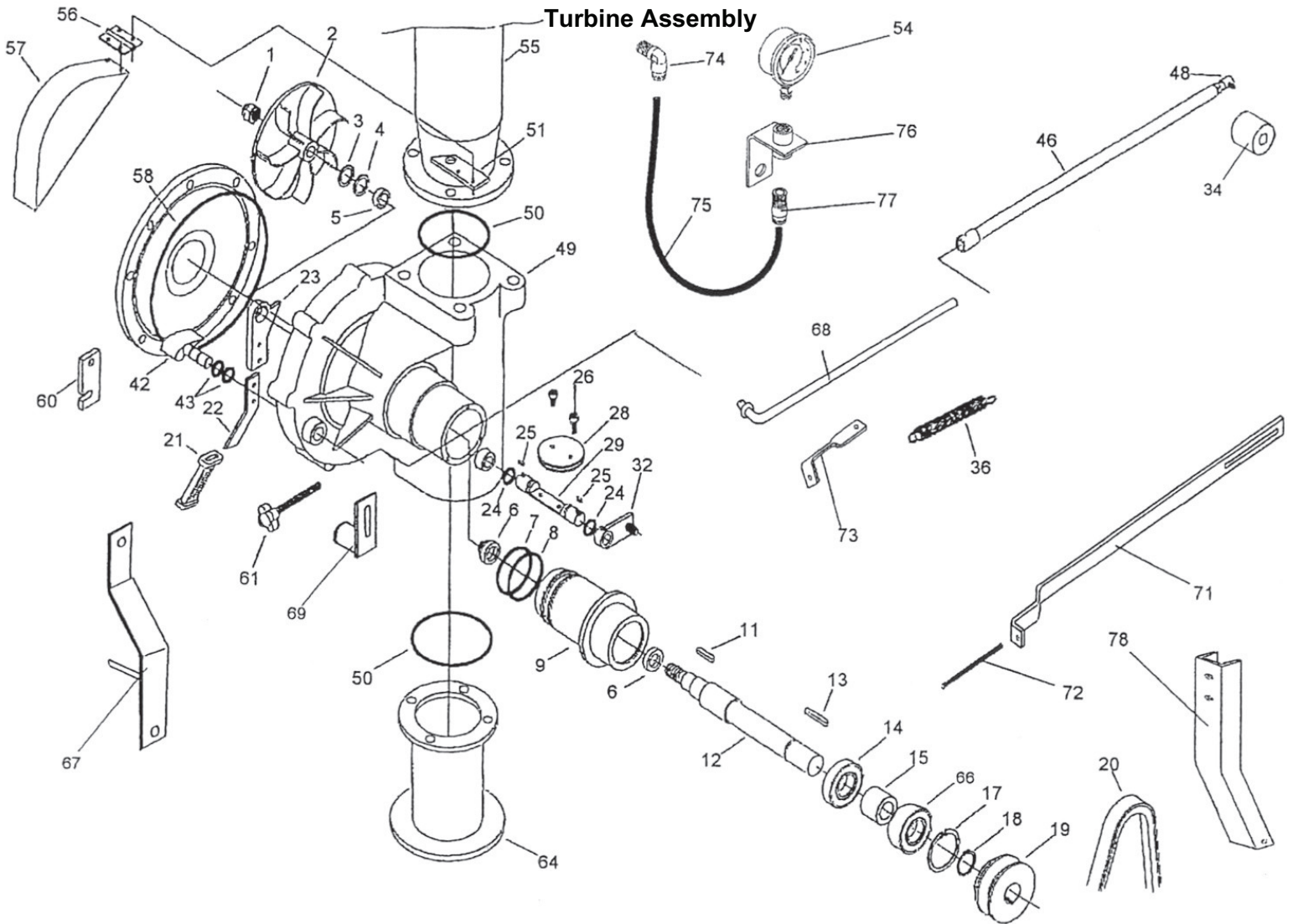
### Boom / Shut Off Assembly



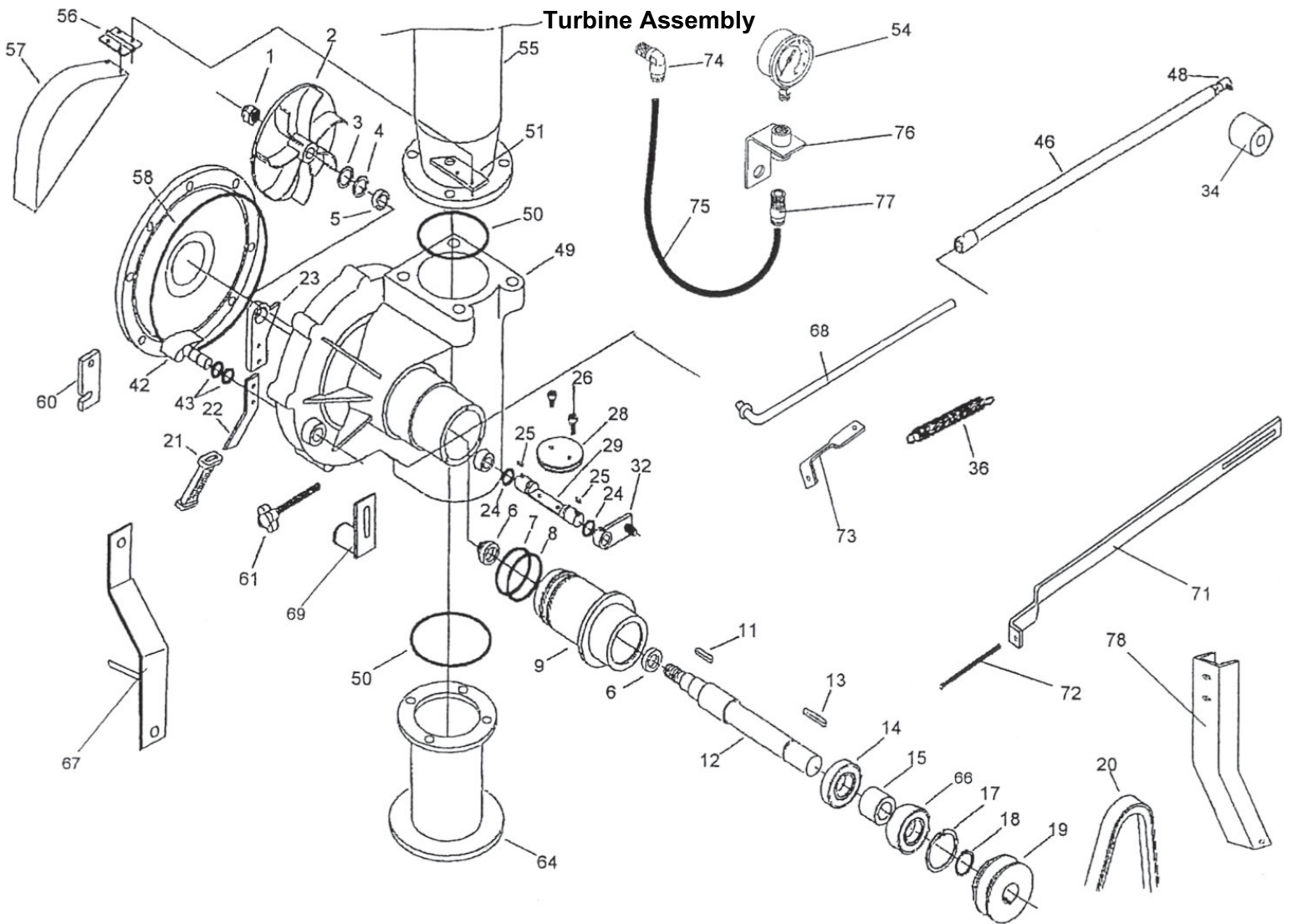
No.	Part Number	Description		Qty.
1	595-0067-0	Brace, Boom		2
2	022-0758-0	Compensator Bar		1
3	402-4906-0	Pulley, WRP 17/32		1
4	325-5191-0	Bushing, .84 x .56 x .62 Long		4
5	595-0054-0	Bushing 3/4 x .51 x 1.75		1
6	594-0339-1	Arm, Lift Right		1
7	594-0476-0	Boom, Catch		1
8	594-0349-1	Boom, Lift Assm		1
9	595-0073-0	Link, Boom Chain		2
10A	594-0336-1	Arm, Lift Left		1
10B	595-0198-0	Spacer Bushing 1-1/8" x .88" x 1-3/8" (Not Shown)		2
11	850-4060-0	Chain, 3/8 Proof Coil 21 Links (Uses 2 per)	Ft.	4
12	523-5565-0	Hook, Clevis Slip		2
13	450-3536-0	Spring, Tnsn 1 x 6		1
14	400-4855-1	Winch, Fulton K 1550		1
15	750-4844-0	Cable, 1/4-7 x 19 Gal	Ft.	12
16	020-0016-6	Spring		1
17	595-0069-0	Transport Strap		2
18	595-0068-0	Brace		2
20	022-0163-1	Cap Plug (Not Shown)		4
21	020-0016-1	Retainer		1
22	022-0759-0	Stop		1
23	022-0760-0	Shut Off Bar		1



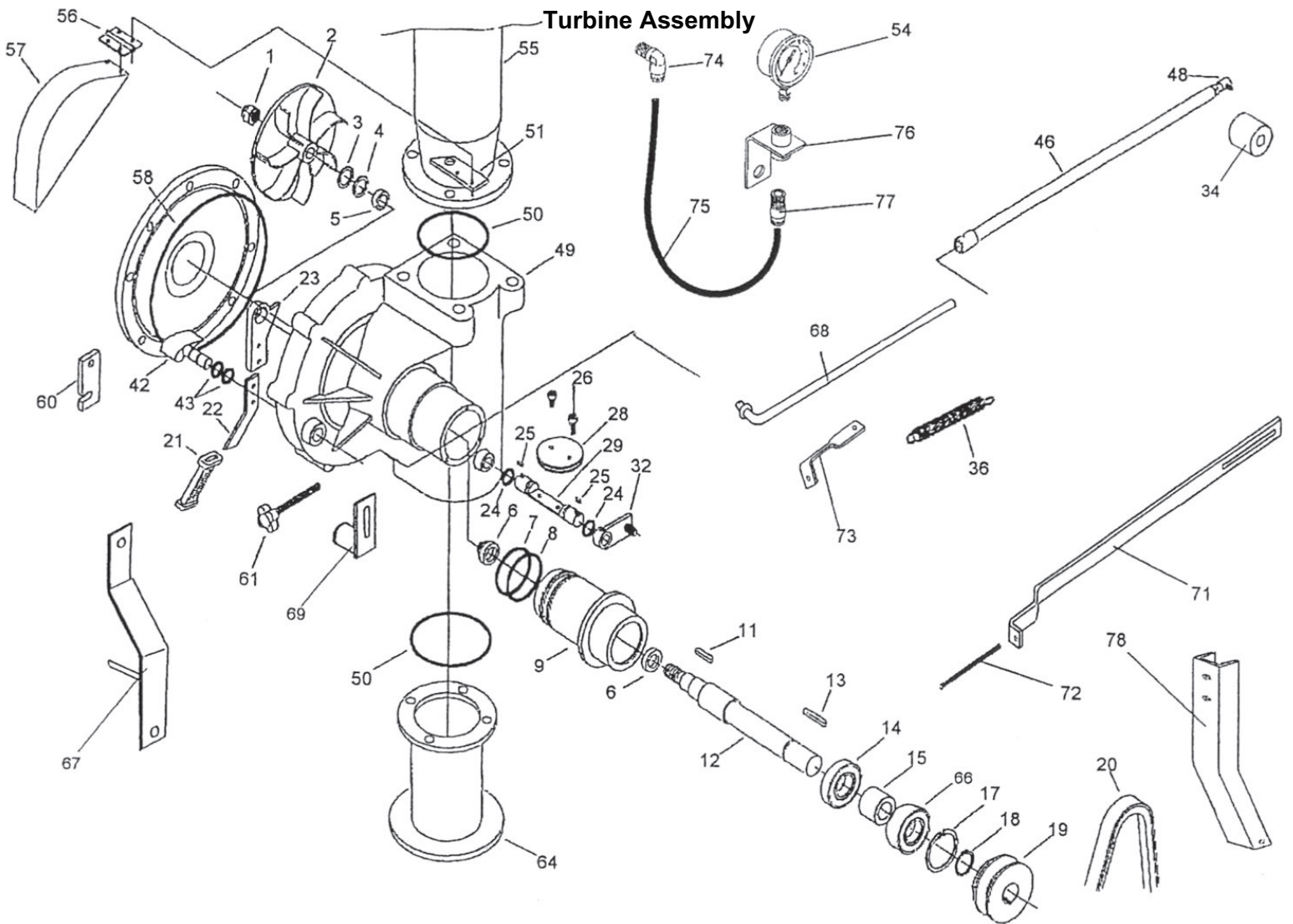
No.	Part Number	Description	Qty.
1A	022-0659-0	Hood	1
1B	597-0281-0	Latch, Rubber (Not shown)	2
2	022-0123-2	Shield, Chain	1
3	593-0039-4	Shield, 40A Spool	6
4	022-0122-0	Shield, Levelwind	1
5	022-0388-0	Shield, Belt	1
6	022-0389-0	Hinge	1
7	596-0029-0	Hood Mt. Stud Front	1
12	022-0749-0	Door (used on some models only)	1
13	022-0750-0	Door (use 2 on some models)	1
14	597-0083-0	Hood Mt. Lower	1
15	595-0665-1	Plate, Hood mt. Rear	1
16	599-0323-0	Shield, (Engine Drive Belt)	1



No.	Part Number	Description	Qty.
1	022-0198-0	Nut, Self Locking Thin 14 x 1.5mm	1
2	022-0199-3	Impeller 6.77 OD x .87 Vane Height	1
3	022-0543-0	Spacer Mylar, .039" Thick	2
4	022-0300-2	Spacer, 15mm (.6"Long)	1
5	022-0544-0	Spacer, .984"OD x .787"ID x .197"Thick	1
6	022-0545-0	Seal 20 x 6	1
7	022-0546-0	O-Ring 2.30" ID x .103"C/S	1
8	022-0546-1	O-Ring 2.362" ID x .103"C/S	1
9	022-0548-0	Turbine Housing T200	1
111	022-0337-0	Key, 5mm x 5mm x 10mm Long	1
12	022-0550-0	Impeller Shaft	1
13	022-0551-0	Key 6 x 50	1
14	022-0167-0	Bearing, 6204 2RS	1
15	022-0552-1	Spacer, 1.8" Long	1
17	022-0324-0	Retaining Ring i47	1
18	022-0323-0	Retaining Ring E20	1
19	022-0592-0	Pulley Three Step	1
20	599-0522-0	Belt A95	1
21	022-0566-0	Hand Grip	1



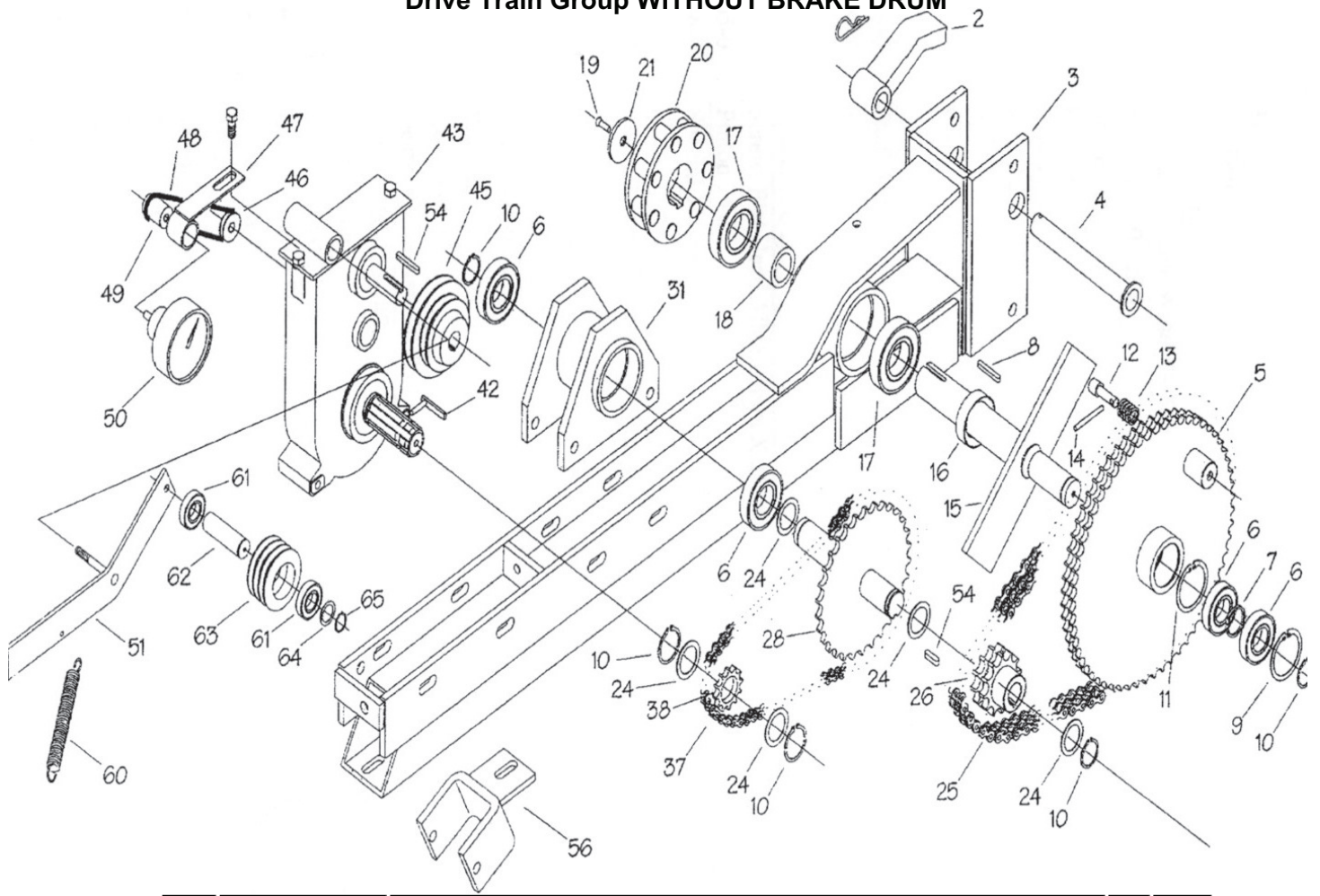
22	022-0557-0	Plate By-Pass Lever		1
23	022-0558-0	Lever		1
24	022-0559-0	O-Ring 120 15,54 x 2.62		2
25	22-0319-0	Key, 6mm x 6mm x 10mm Long		2
26	022-0305-0	Screw, 6 x 16 Inox		2
28	022-0562-0	Disc, By-Pass		1
29	022-0563-2	By-Pass Shaft		1
31	596-0041-0	Gauge Protector		1
32	022-0564-0	By-Pass Lever		1
34	022-0660-0	Spacer 1" OD x 2.4" Long x 8mm Threads		1
36	022-0318-0	Spring		1
42	022-0566-0	Regulator Flap with Pin		1
43	022-0331-0	O-ring		2
46	022-0569-1	By-Pass rod		1
48	022-0341-0	Rod End		1
49	022-0302-1	Turbine Body		1
50	022-0484-0	O-Ring		2
51	022-0571-0	Support		1
54	586-0675-0	Gauge 0-300		1
55	022-0655-0	Elbow, Upper 40		1



56	022-0389-0	Hinge		1
57	022-0388-0	Shield, Belt		1
58	022-0572-0	O-Ring i286 x 3.53		1
60	022-0573-0	Stop Plate		1
61	022-0391-0	Knob		1
64	022-0483-0	Lower Feeding Elbow		1
65	990-7030-0	Overhaul it Runner Shaft. 25/120(Not Shown)		1
66	022-0167-1	Bearing, 5204 2RS		1
67	022-0648-0	Arm, Comp		1
68	022-0649-1	Link, Comp		1
69	022-0650-0	Loop, Comp		1
71	022-0794-0	Bar, Shut Off		1
72	022-0795-0	Stud, All Thread		1
73	022-0796-0	Bracket, Spring		1
74	525-4915-2	Ftg, TB 90 Deg. 1/4"MNPT x 5/16" Tube		1
75	252-4939-2	Tube, Synflex 5/16"	Ft.	2
76	599-0148-0	Gauge Mount		1
77	525-4915-4	Ftg, TB Straight 1/4" MNPT x 5/16" Tube		1
78	022-0797-0	Arm Clutch Disengage		1

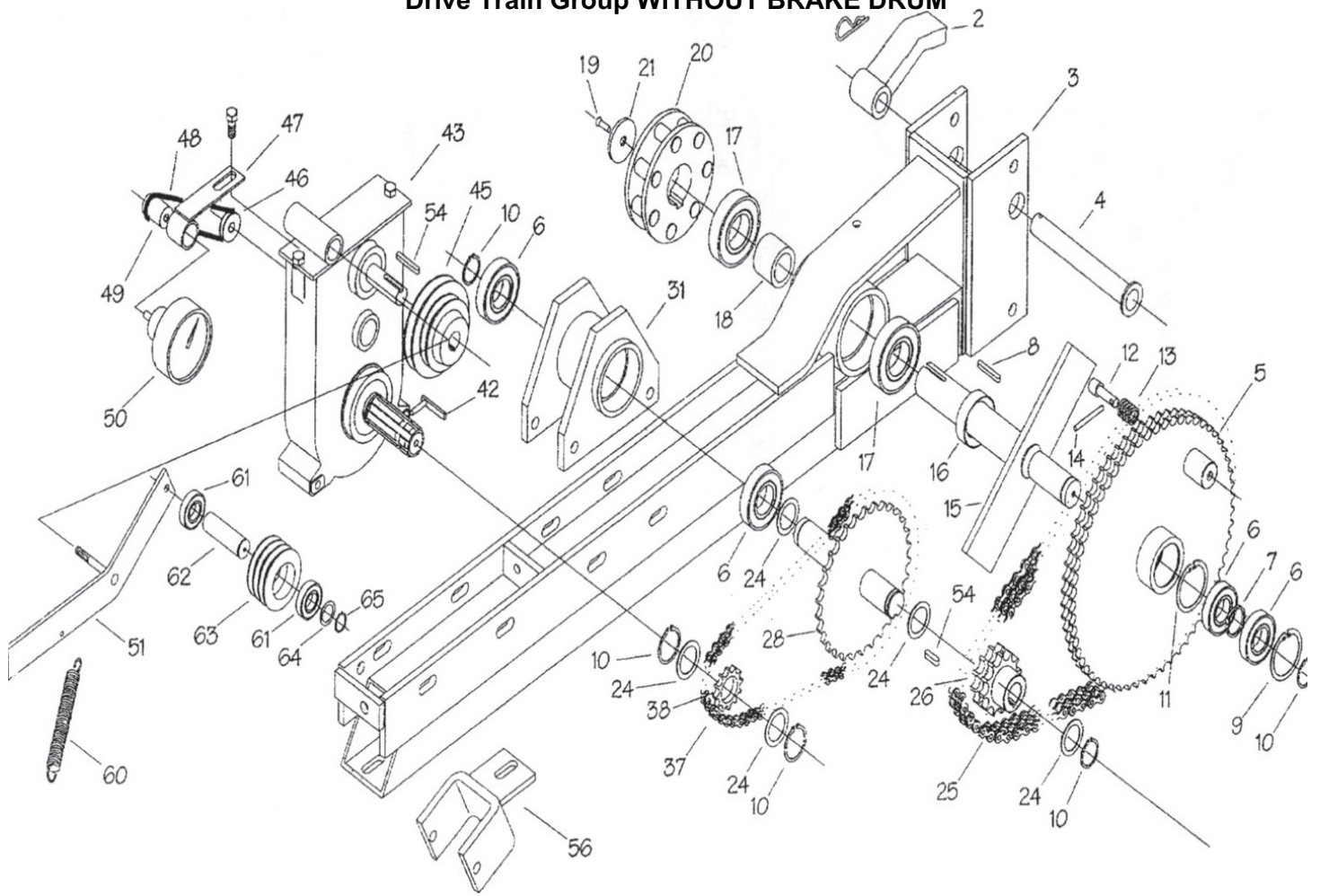


## Drive Train Group WITHOUT BRAKE DRUM



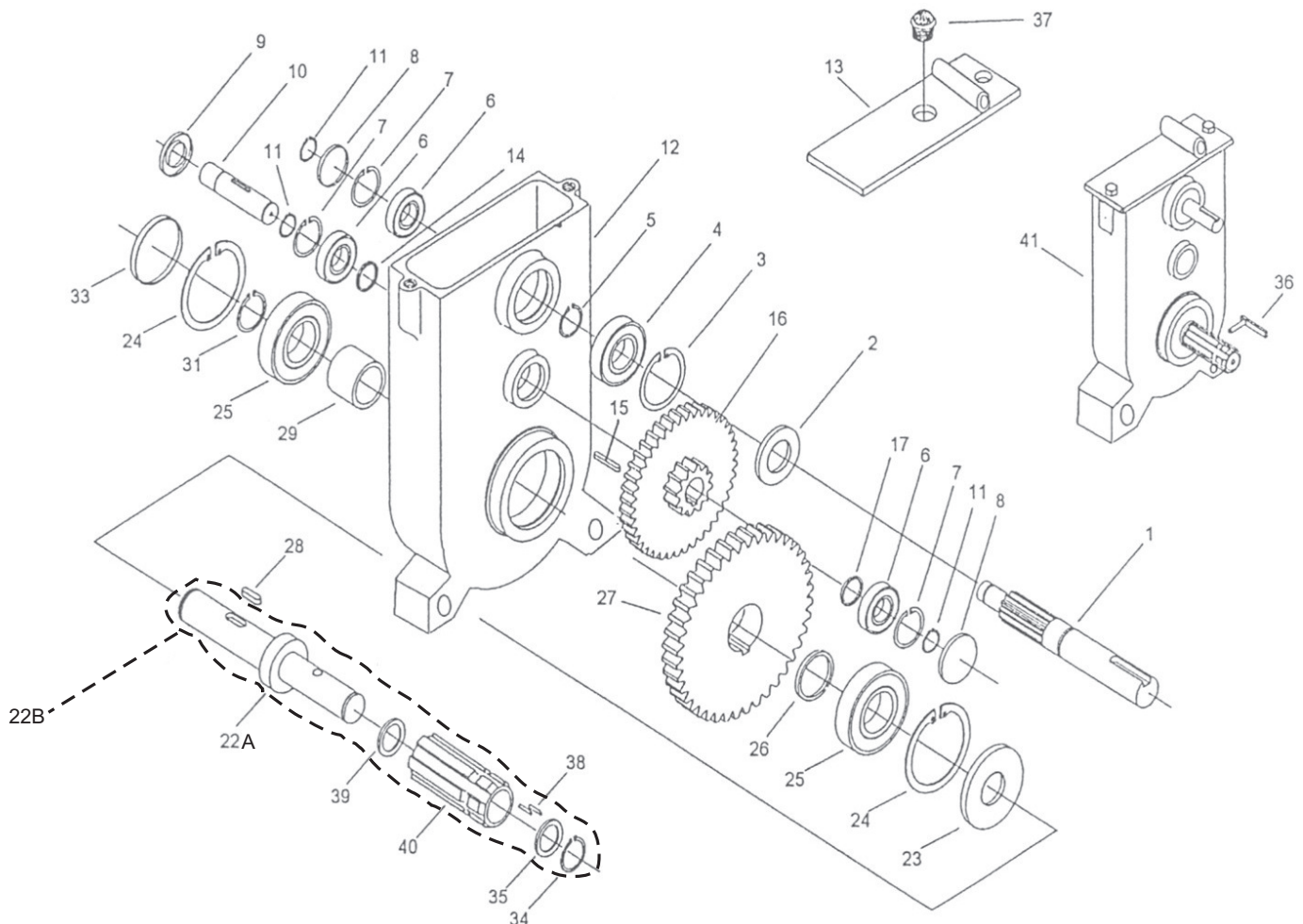
No.	Part Number	Description	Qty.
2	02205210	PAWL, NON RETURN FG1 & FF1	1
3	02208060	FRAME, POWERTRAIN SUPPORT - FG1	1
4	02205200	PIN, ANTI REVERSE	1
5	02204960	SPROCKET ASM 3/4" Z60 DOUBLE	1
6	02203530	BEARING, 6207-2RS	4
7	02204950	SPACER	1
8	02216300	KEY 16MM X 50MM	1
9	02204940	SNAP RING I72	2
10	02205340	SNAP RING E35	5
12	02203490	PIN	1
13	02203470	SPRING	1
14	02203480	PIN	1
15	02204980	SHAFT DIA. 55 002707/A	1
16	02205000	SPACER	1
17	02205010	BEARING, 6211-2RS	2
18	02214700	SPACER, 55MM JACKSHAFT - FG1/MG2	1
19	55070110	SCREW 10MMX25MM ALLEN FLAT	1
20	02206070	PINION Z7 PIN DIA 26MM	1
21	02205060	WASHER, SPECIAL	1
24	02205350	SPACER, 1.765X1.385X .038	2
25	87548473	CHAIN 3/4"-2DW RLLR PER FT (77P)	ft. 4.8

## Drive Train Group WITHOUT BRAKE DRUM



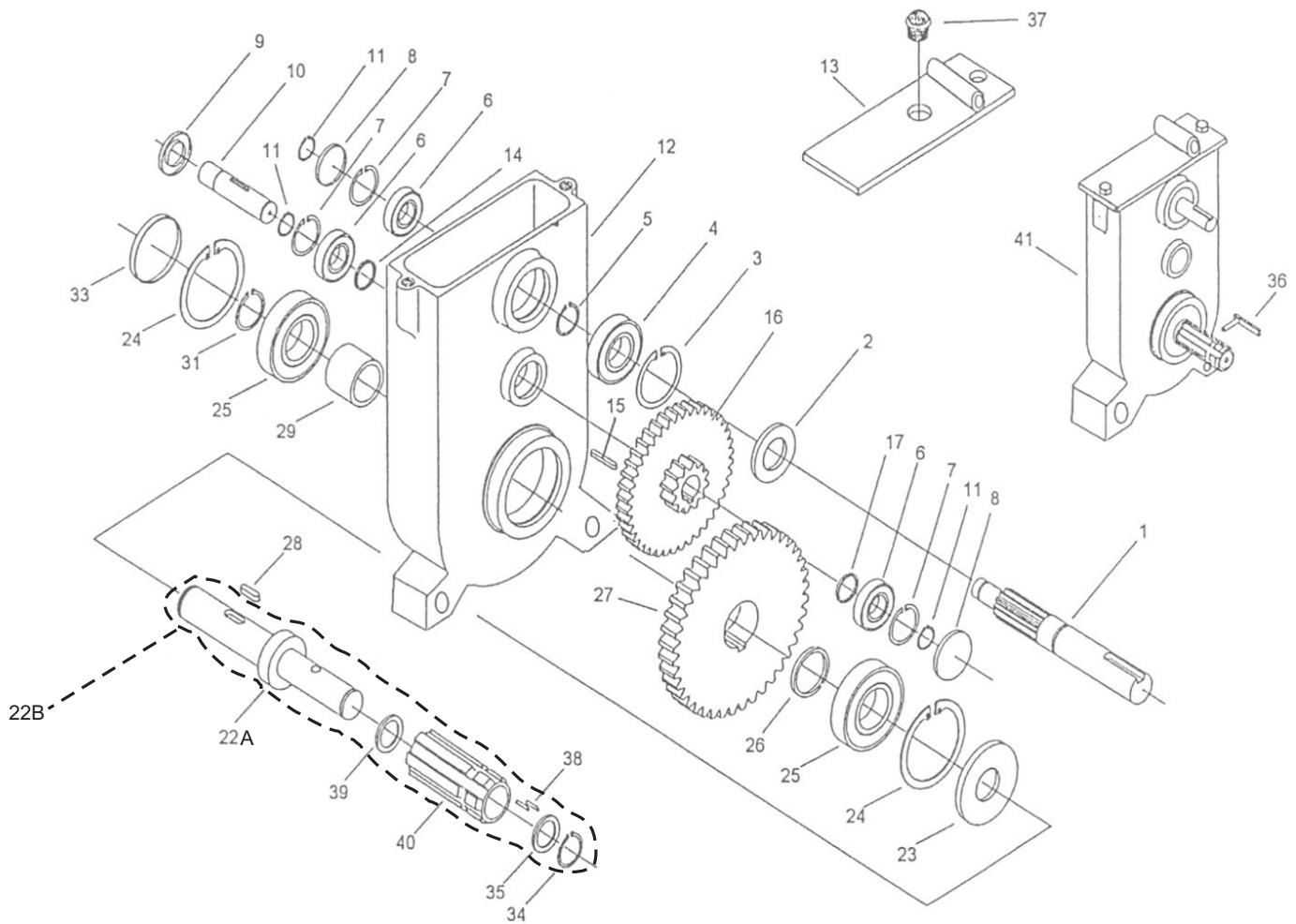
27	02203510	KEY, 10MM X 8MM X 30MM		1
28	02205090	SPROCKET 5/8"Z52 003591		1
31	02205030	BEARING,SUPPORT		1
32	02213110	SPACER 35 X 7		1
37	02001141	CHAIN 5/8 METRIC ROLLER PER FT. ( 68P)	ft.	3.6
38	02205140	SPROCKET 5/8"Z13 002445/B		1
42	02201910	SAFETY KEY & THREADED PIN		1
43	02204393	GEARBOX FF1,A1,D2,S/N330,000FWD		1
45	02205930	PLLY,3 STEP 100,125,147 W/SETSCRW		1
46	02206640	PULLEY TACH		1
47	02203670	BRACKET, TACHOMETER		1
48	02203660	BELT,DIA 3.5		1
49	59404411	PULLEY,TACH .966		1
50	02201200	TACHOMETER ASM,0-400 FT/HR A SERIES		1
51	02207450	ARM, IDLER - D2/FF1/FG1/MF1/MG1/2		1
54	02205510	KEY 6 X 50		1
56	02216460	END SUPPORT		1
60	02203180	SPRING BELT TIGHTENER		1
61	02203440	BEARING,6005-2RS		2
62	02206530	SHAFT,BELT IDLER		1
63	02206540	PULLEY IDLER 3 GROOVE		1
64	02207030	SPACER 1MM X 25MM X 35MM		1
65	52662540	RING,RET EX		1

## Gearbox for Drive Train Group WITHOUT BRAKE DRUM



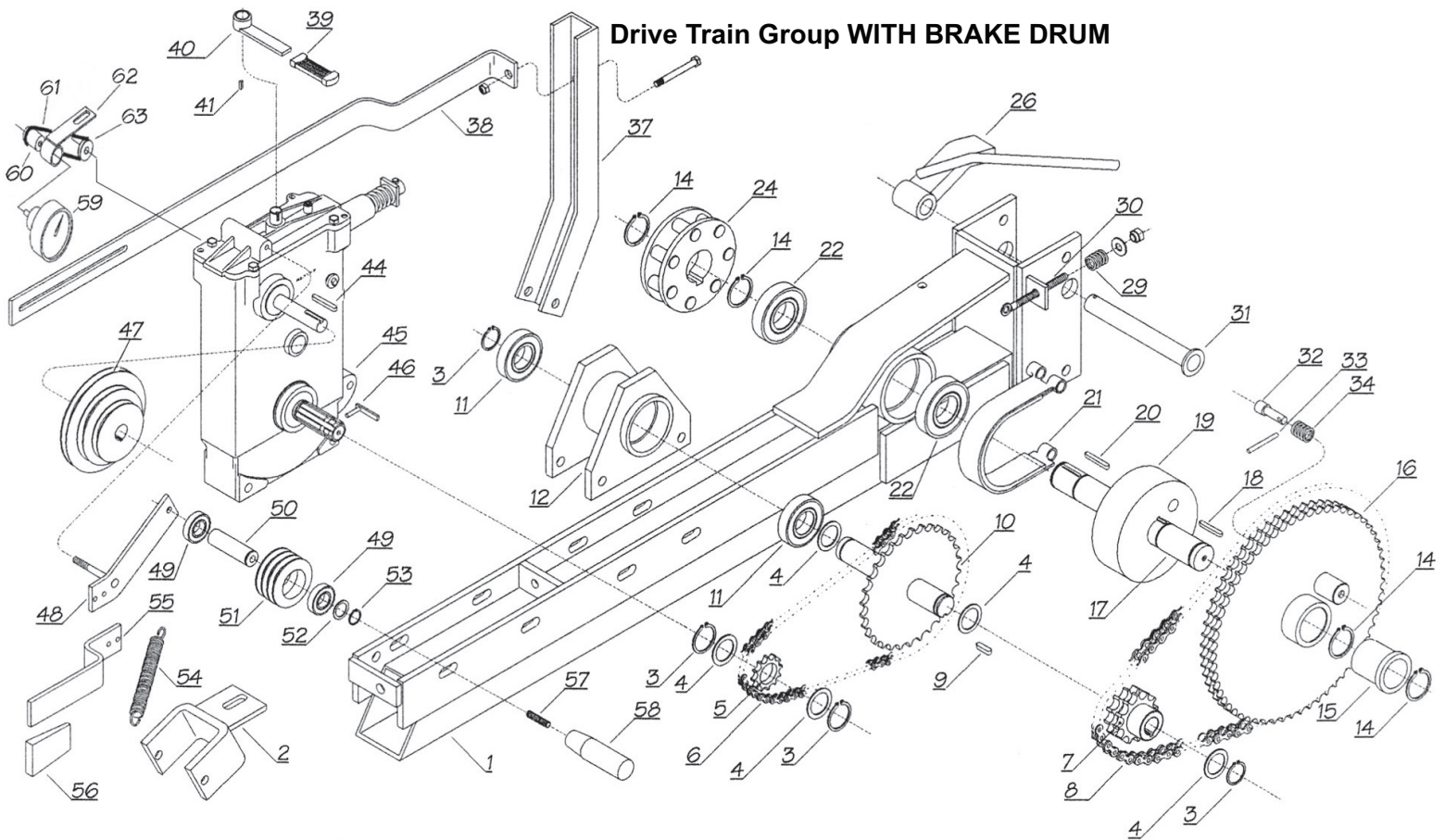
22A	022-0179-0	Output Shaft	1
22B	022-1026-0	Shaft Assembly Complete	1
23	022-0180-0	Oil Retainer Dia. 35 x 62 x 7 mm	1
24	022-0181-0	Stop Ring i62	2
25	022-0182-0	Bearing 6206 ( no seals )	2
26	022-0183-0	Shim i 30 x .5	1
27	022-0184-2	Pinion Z72 M2	1
28	022-0185-0	Key, 8mm x 8mm x 20mm Long	1
29	022-0186-0	Spacer, Dia. 33 x 42 x 19.5 TH 19.5	1
31	022-0187-0	Stop Ring E30	1
33	022-0188-0	Plug Dia. 62	1
34	022-0189-0	Stop Ring E18	1
35	022-0190-0	Spacer Dia. 18 x 2.8	1
36	022-0191-0	Safety Key & Threaded Pin	1
37	022-0641-0	Breather	1
38	022-0193-0	Bearing Pins Dia. 2 x 17.8	62
39	022-0194-0	Spacer i22 x 2.8	1
40	022-0195-0	Splined Pin	1
41	022-0439-3	Gearbox 40.0 to 1 Complete	1
42	022-0121-0	Shield, PTO Cover (Not Shown)	1
43	022-0479-0	PTO Rewind Crank (Not Shown)	1

## Gearbox for Drive Train Group WITHOUT BRAKE DRUM



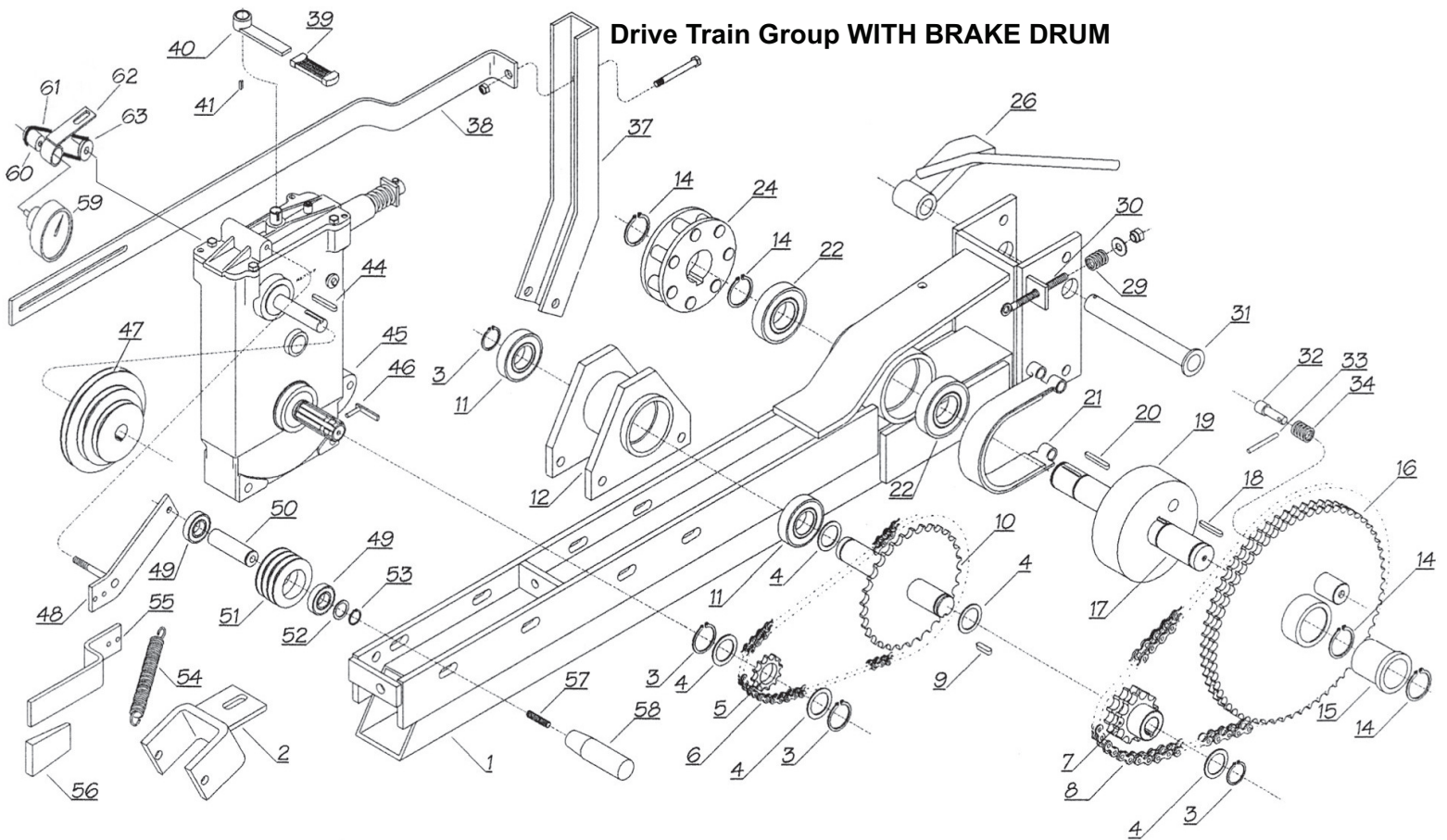
<b>Gearbox</b>			
<b>No.</b>	<b>Part Number</b>	<b>Description</b>	<b>Qty.</b>
1	022-0164-2	Shaft, (Pin Z 12M x 1.5)	1
2	022-0165-0	Oil Retainer Dia. 20 x 47 x 7	1
3	022-0166-0	Stop Ring 147	1
4	022-0167-0	Bearing 6204 2RS	1
5	022-0168-0	Stop Ring E20	3
6	022-0169-0	Bearing , 6201	3
7	022-0170-0	Stop Ring 132	2
8	022-0171-0	Plug, Dia. 132	1
9	022-0172-0	Oil Retainer Dia. 12 x 32	1
10	022-0173-0	Shaft	1
11	022-0174-0	Stop Ring E12	3
12	022-0196-1	Gearbox Body	1
13	022-0197-1	Gearbox Cover	1
14	022-0175-0	Shim, i12 x .5	1
15	022-0176-0	Key 4 x 10	1
16	022-0177-2	DOUBLE PINION Z12 M2/Z80 M1.5	1
17	022-0178-0	Shim i12 x 1	1

## Drive Train Group WITH BRAKE DRUM



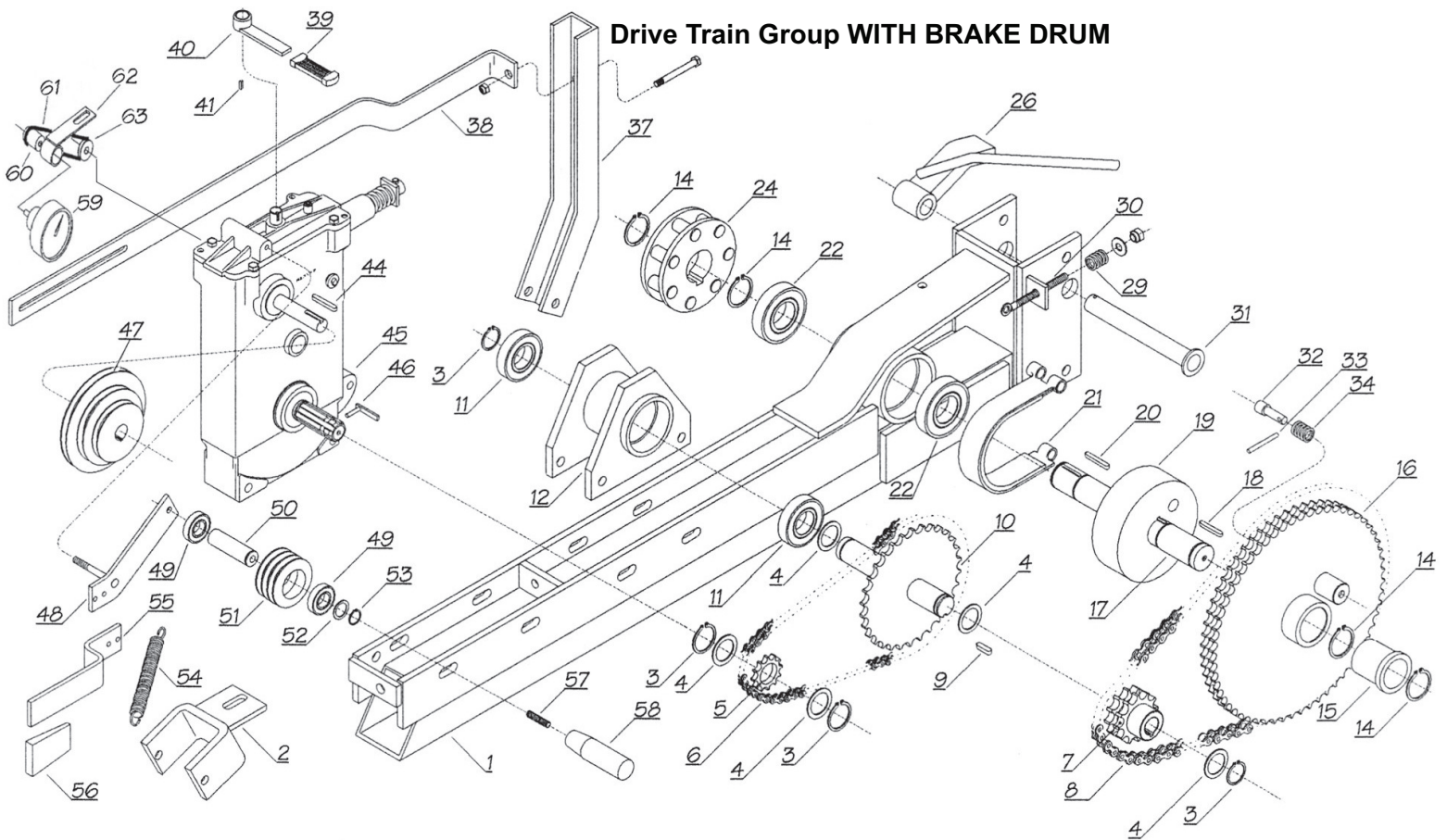
No.	Part Number	Description		Qty.
1	02208060	FRAME, POWERTRAIN SUPPORT - FG1		1
2	02216460	END SUPPORT-FG1		1
3	02205340	SNAP RING E35		3
4	02205350	SPACER,1.765X1.385X .038		
5	02205140	SPROCKET 5/8"Z13 002445/B		1
6	02001141	CHAIN 5/8" METRIC ROLLER PER FT.( 61 rollers )	ft.	3.17
7	02205110	SPROCKET 3/4"Z13 002945		1
8	87548473	CHAIN 3/4"-2DW RLLR PER FT ( 77 Rollers)	ft.	4.8
9		KEY 10mm x 30mm		1
10	02270420	SPROCKET, Z40 X 5/8		1
11	02203530	BEARING,6207-2RS		2
12	02205030	BEARING,SUPPORT		1
14	02206080	SNAP RING E-55		4
15	02216350	BUSHING, BRONZE 55MM X 65MM X 60MM		1
16	02208130	SPROCKET, Z60 3/4 DOUBLE		1
17	02210400	SHAFT, 55MM FG1		1
18	02216470	KEY, 16MM X 20MM X 10MM		1
19	02207610	HUB, BRAKE 55MM BORE - FG1/MG1		1
20	02216300	KEY 16MM X 50MM		1
21	02207620	BRAKE BAND - FF1/MF1/FG1/MG1/MG2		1
22	02205010	BEARING,6211-2RS		2
24	02206070	PINION Z7 PIN DIA 26MM		1
26	02205210	PAWL,NON RETURN FG1 & FF1		1

## Drive Train Group WITH BRAKE DRUM



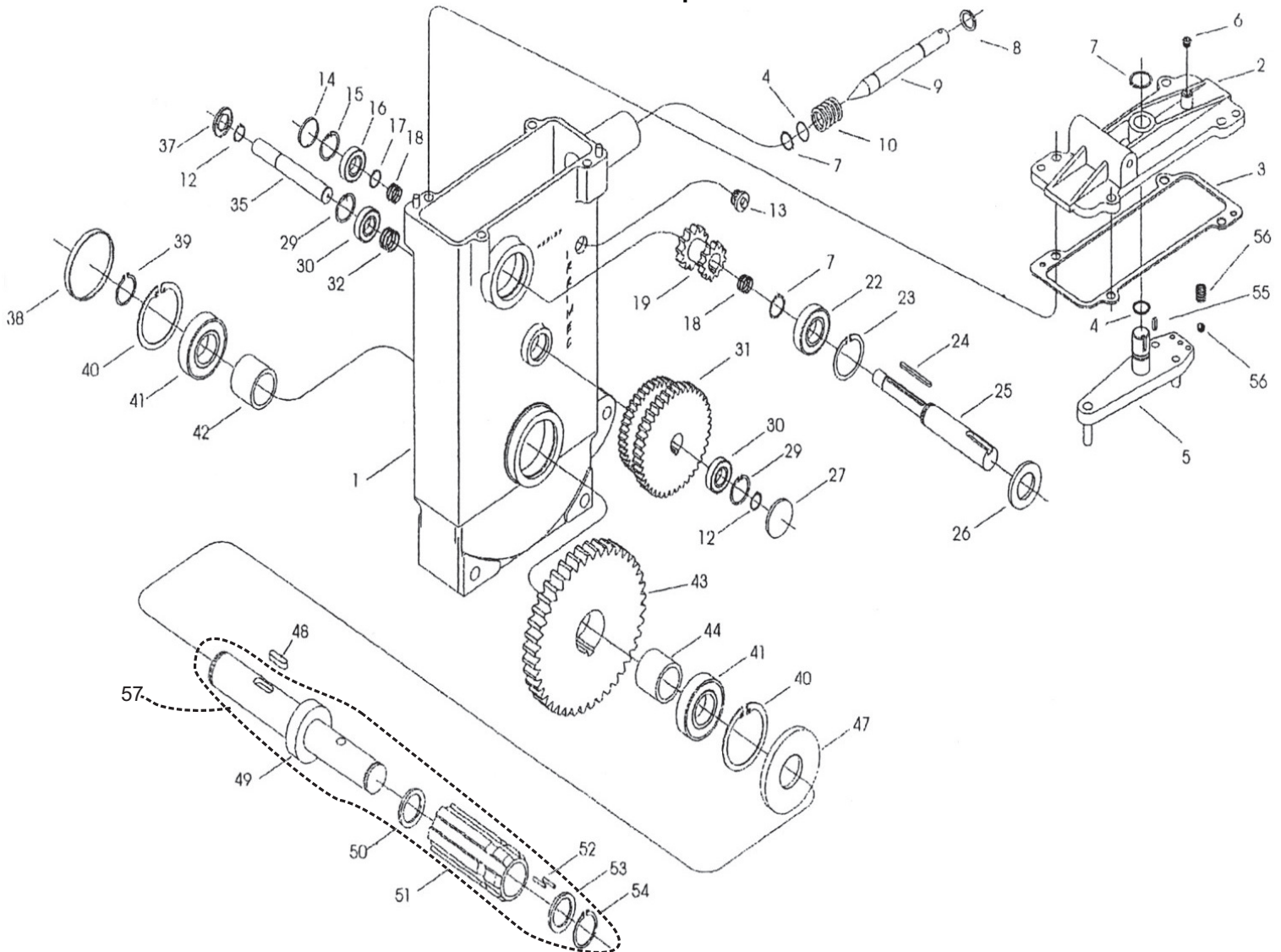
29	02216400	SPRING C98		1
30		BRAKE ROD		1
31	02205200	PIN, ANTI REVERSE		1
32	02203490	PIN		1
33	02203480	PIN		1
34	02216310	SPRING DIA. 1,6		1
37	02216450	STOP LEVER		1
38	02207940	BAR, GEARBOX SHUT OFF-FF1/FG1		1
39	02204140	GRIP, TURBINE		1
40	02216420	GEARBOX SPEED LEVER		1
40a	02207920	HANDLE SHIFTER		1
44	02205510	KEY 6 X 50		1
45	02208000	GEARBOX,2 SPEED 27/53		1
46	02201910	SAFETY KEY & THREADED PIN		1
47	02213980	PLLY,3 STEP 100M,125M,147		1
47a	02205931	PULLEY,166MM 191MM 213MM		1
48	02216410	BELT TIGHTENER LEVER		1
49	02203440	BEARING,6005-2RS		1
50	02206530	SHAFT,BELT IDLER		1
51	02206540	PULLEY IDLER 3 GROOVE		1
52	02207030	SPACER 1MM X 25MM X 35MM		1
53	02203420	SNAP RING E25		1
54	02207460	SPRING, TIGHTENER		1

## Drive Train Group WITH BRAKE DRUM



55		BELT TIGHTENER LEVER HAND GRIP PART		1
56	02216480	HAND WHEEL PVC MOD 1054 35X10		1
57		STUD, M8		1
58	02216490	HAND GRIP MOD. 1034/F 80-N8		1
59	02201200	TACHOMETER ASM,0-400 FT/HR A SERIES		1
60	59404411	PULLEY,TACH .966		1
61	02203660	BELT,DIA 3.5		1
62	02203670	BRACKET, TACHOMETER		1
63	59904161	TACH PULLEY 1.15		1

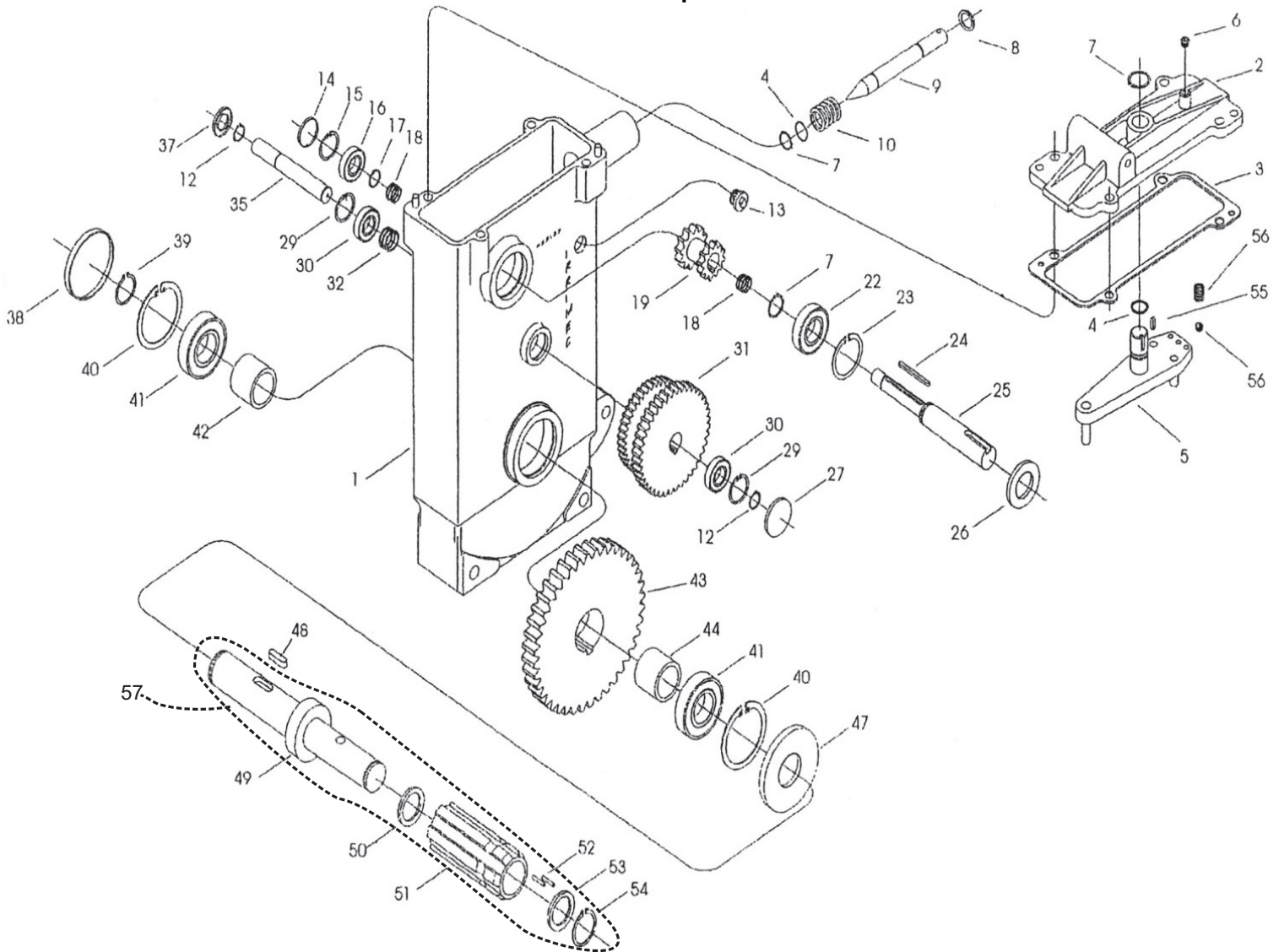
## Gearbox for Drive Train Group WITH BRAKE DRUM



No.	Part Number	Description	Qty.
1	022-0765-0	Gearbox Body	1
2	022-0766-0	Gearbox Cover	1
3	022-0767-0	Gasket	1
4	022-0559-0	O-Ring 20.78mm OD x 2.62mm Cross Section	2
5	022-0768-0	Clutch Rod	1
6	022-0769-0	Breather	1
7	022-0168-0	Snap Ring E20	3
8		Washer	1
9	022-0770-0	Clutch Pin	1
10	022-0771-0	Spring f.2,5 L.34 dia. 29,5	1
12	022-0131-0	Snap Ring E15	2
13		Plug 3/4"	1
14	022-0171-0	Plug 32 x 7	1
15	022-0170-0	Snap Ring i32	1
16	022-0169-0	Bearing 6201	1
17	022-0174-0	Snap Ring E12	1
18	022-0772-0	Shim	

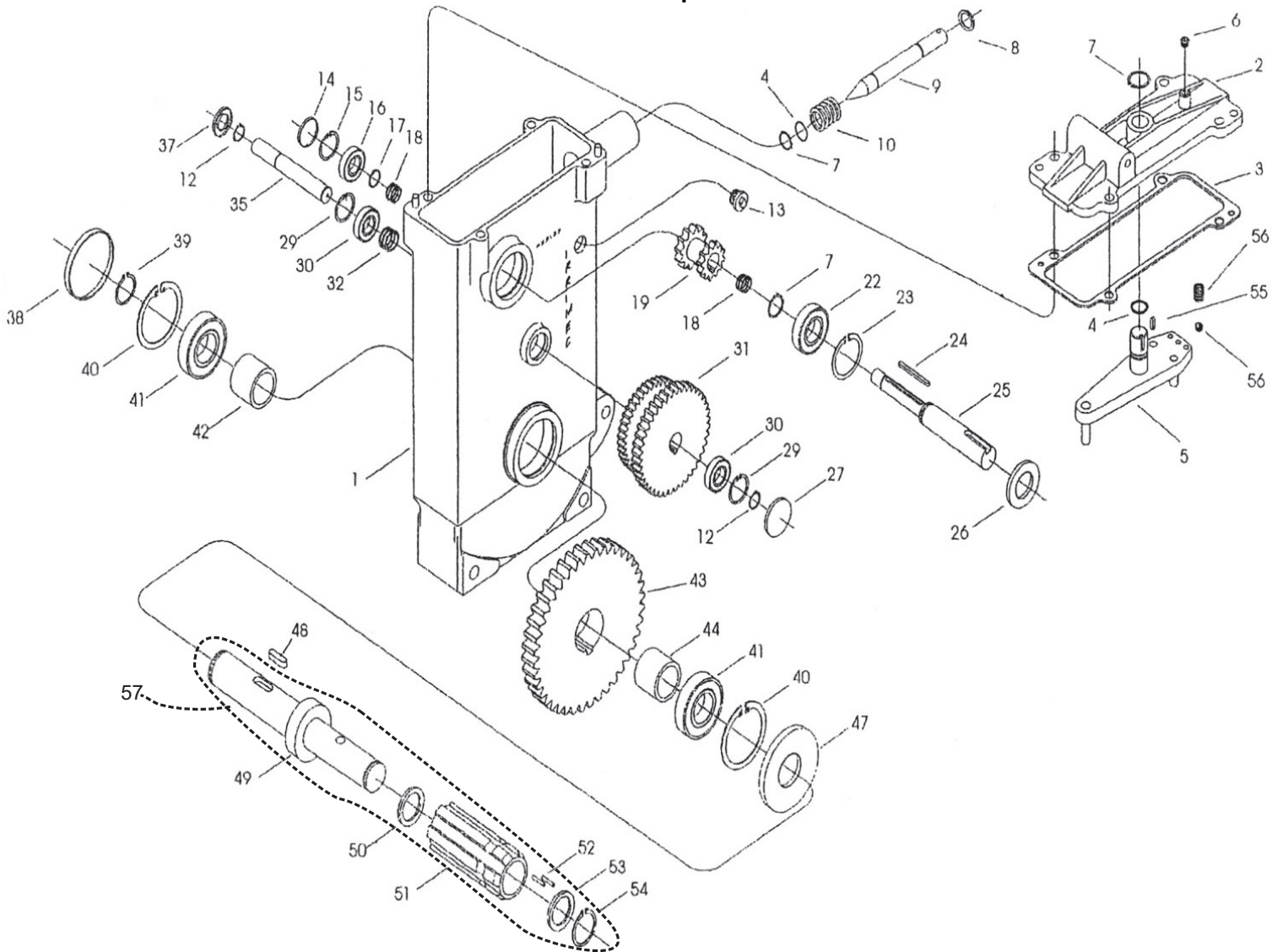


## Gearbox for Drive Train Group WITH BRAKE DRUM



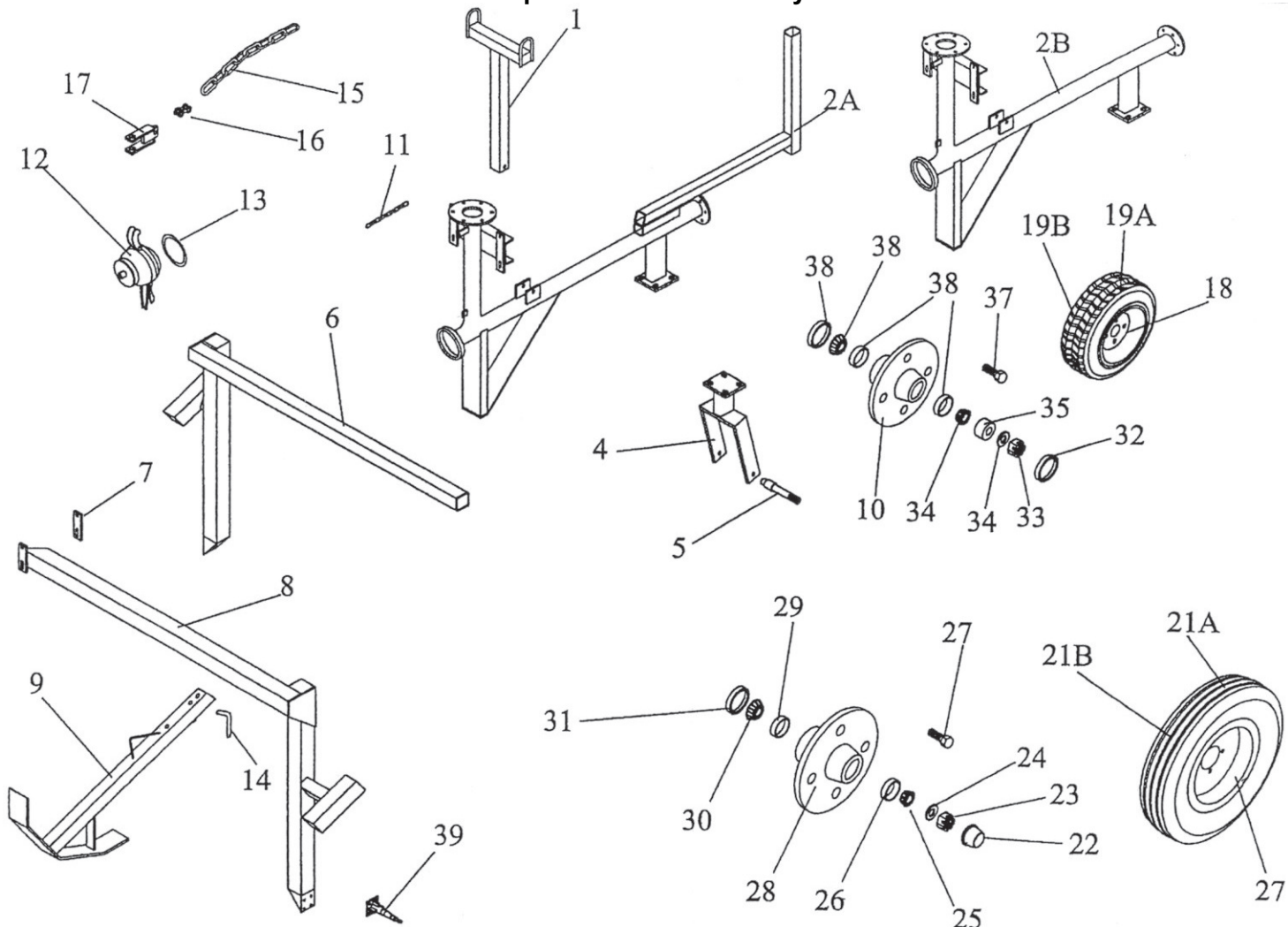
19	022-0773-0	Clutch Pinion Z28 M1,5-Z16 M1,5	1
22	022-0167-0	Bearing 5204 2RS	1
23	022-0166-0	Snap Ring i47	1
24	022-0774-0	Key 4x	1
25	022-0775-0	Inlet Shaft	1
26	022-0165-0	Seal, 20mm x 47mm x 7mm	1
27	022-0776-0	Plug 35 x 8	1
29	022-0777-0	Snap Ring i35	2
30	022-0778-0	Bearing 6202	2
31	022-0779-0	Pinion Z118 M1,5-Z106 M1,5-Z13 M2	1
32	022-0780-0	Shim	
35	022-0781-0	Middle Shaft	1
37	022-0782-0	Oil Seal 35mm x 15mm x 7mm	1
38	022-0624-0	Plug 62 x 10	1
39	022-0187-0	Snap Ring E30	1
40	02-0181-0	Snap Ring i62	2
41	022-0182-0	Bearing 6206 ( no seals )	2
42	022-0784-0	Spacer	

## Gearbox for Drive Train Group WITH BRAKE DRUM



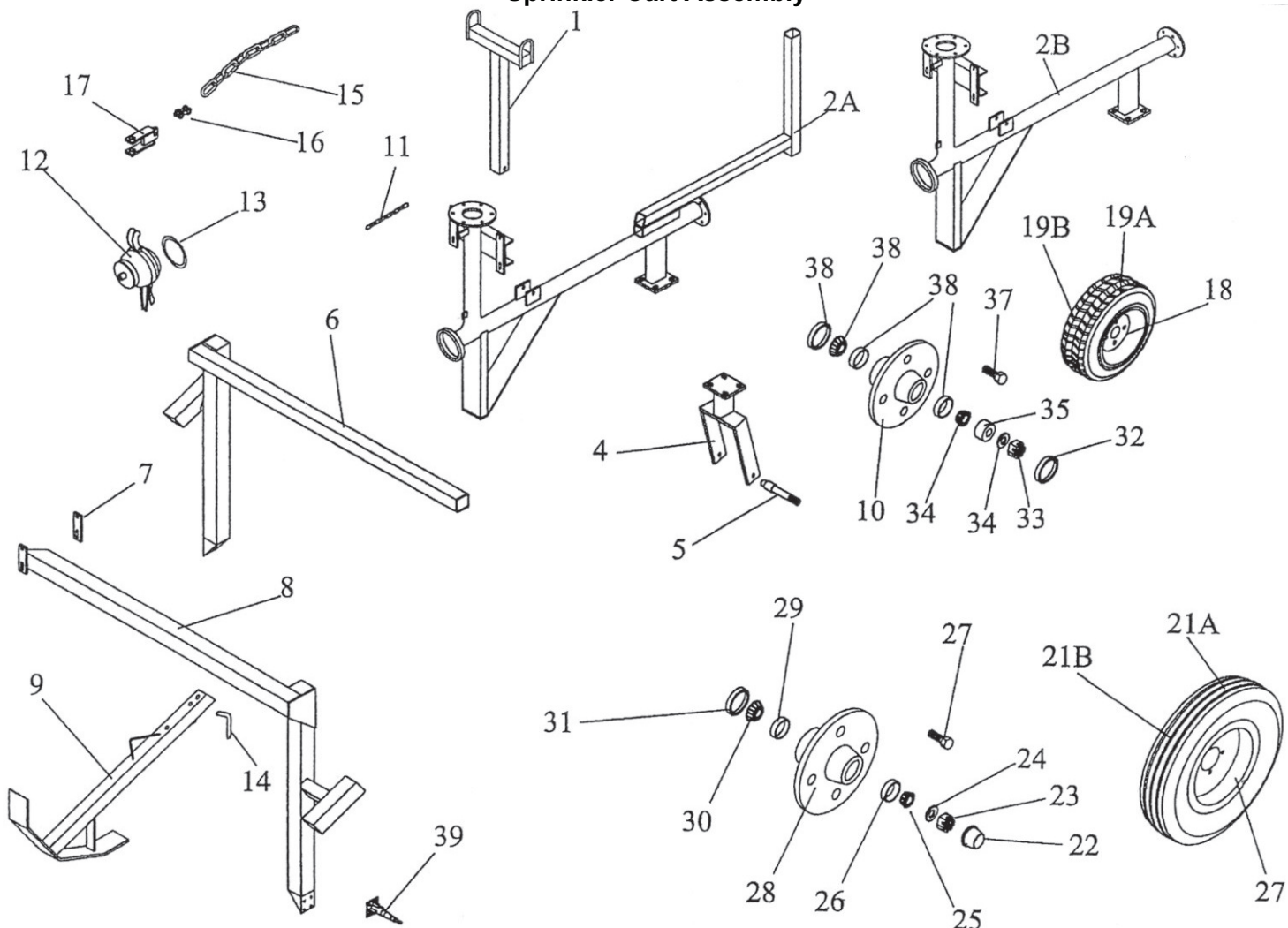
43	022-075-0	Pinion Z94 M2	1
44	022-0786-0	Spacer	
47	022-0180-0	Oil Retainer 62 x 35 x 7	1
48	022-0788-0	Key 8 x 7 x 25	1
49	022-0790-0	Shaft	1
50	022-0194-0	Spacer 22 x 3	1
51	022-0195-0	Pin, Splined	1
52	022-0193-0	Pin, bearing 2 x 17.8	62
53	022-0190-0	Spacer Dia 18 x 2.8	1
54	022-0189-0	Ring, Stop	1
55	022-549-0	Key 6 x 6 x 25	1
56	022-0791-0	Ball	1
57	022-1026-1	Shaft Assm R53/27 Complete	1
	500-0470-0	Shut Off Cable Kit (Not Shown- Turbine Drives Only)	1

## Sprinkler Cart Assembly



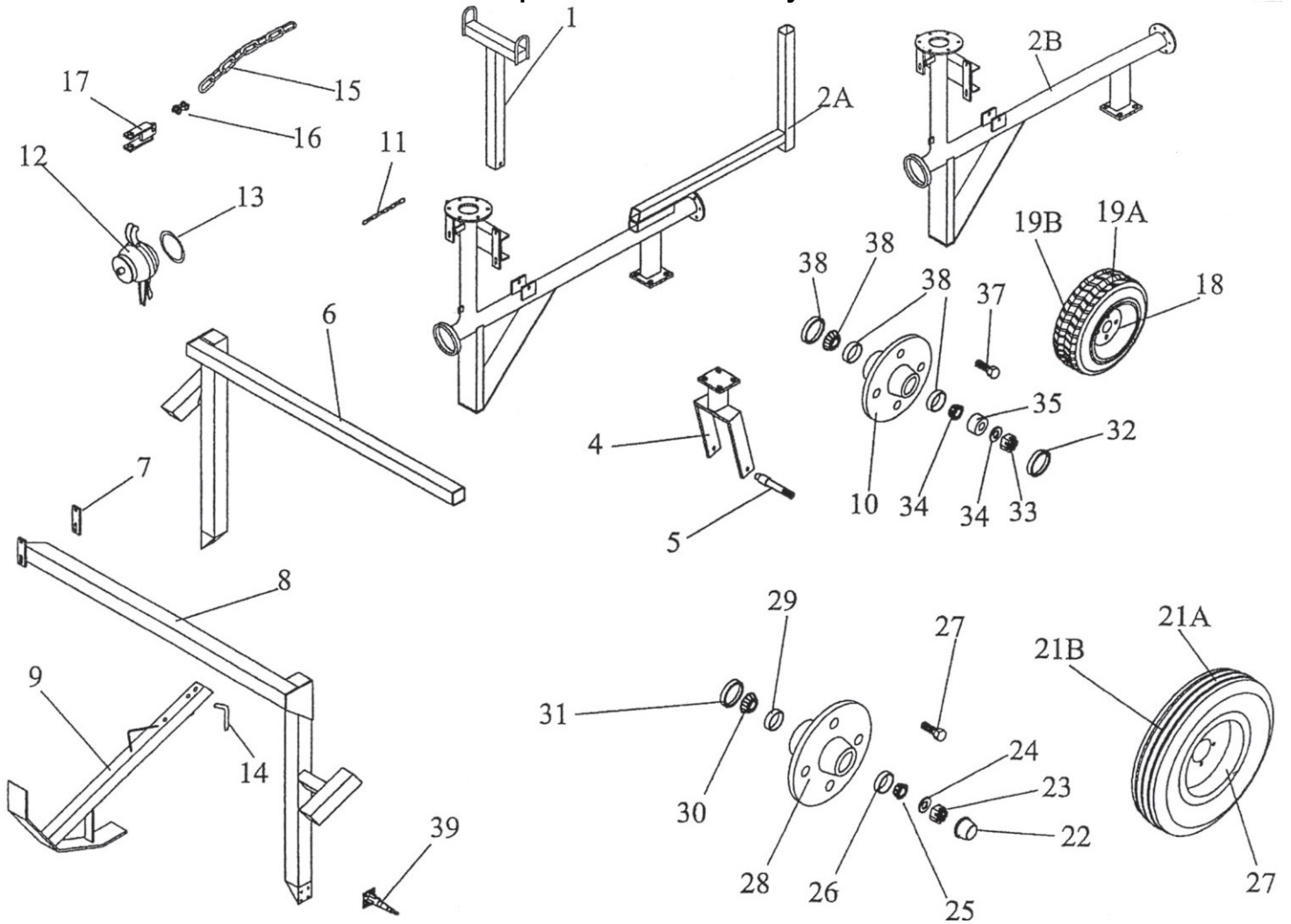
No.	Part Number	Description	Qty.
1	591-0003-1	Lift Bail	1
2A	594-0382-4	Body, Gun cart	1
2B	599-0377-0	Body, Gun cart	1
2C	584-0643-0	Riser Extension 12" (not shown)	
2D	584-0643-1	Riser Extension 24" (not shown)	
4	060-0997-4	Yoke, Front Gun cart	1
5	060-1019-9	Axle, Front	1
6	595-0492-0	Leg, Inner	1
7	584-0843-0	Strap	3
8	595-0491-0	Leg, Outer	1
9	595-0048-0	Stabilizer Leg	2
10A	588-0356-4	Hub w/Race	1
10B	595-0382-0	Hub & Axle Assembly (Not Shown)	1
11	850-4059-0	Chain, 3/16" Proof Coil (10 Links)	Ft. .84
12	597-0312-0	Plug, with Lever, Ball	1
13	588-0023-3	O-Ring 4" 6-3/8" OD x 9/16	1
14	597-0091-0	Pin, 3/8" x 2.5" Long	2
15	850-4060-0	Chain, 3/8" Proof Coil	4
16	523-5394-1	Clevis Double	2

### Sprinkler Cart Assembly



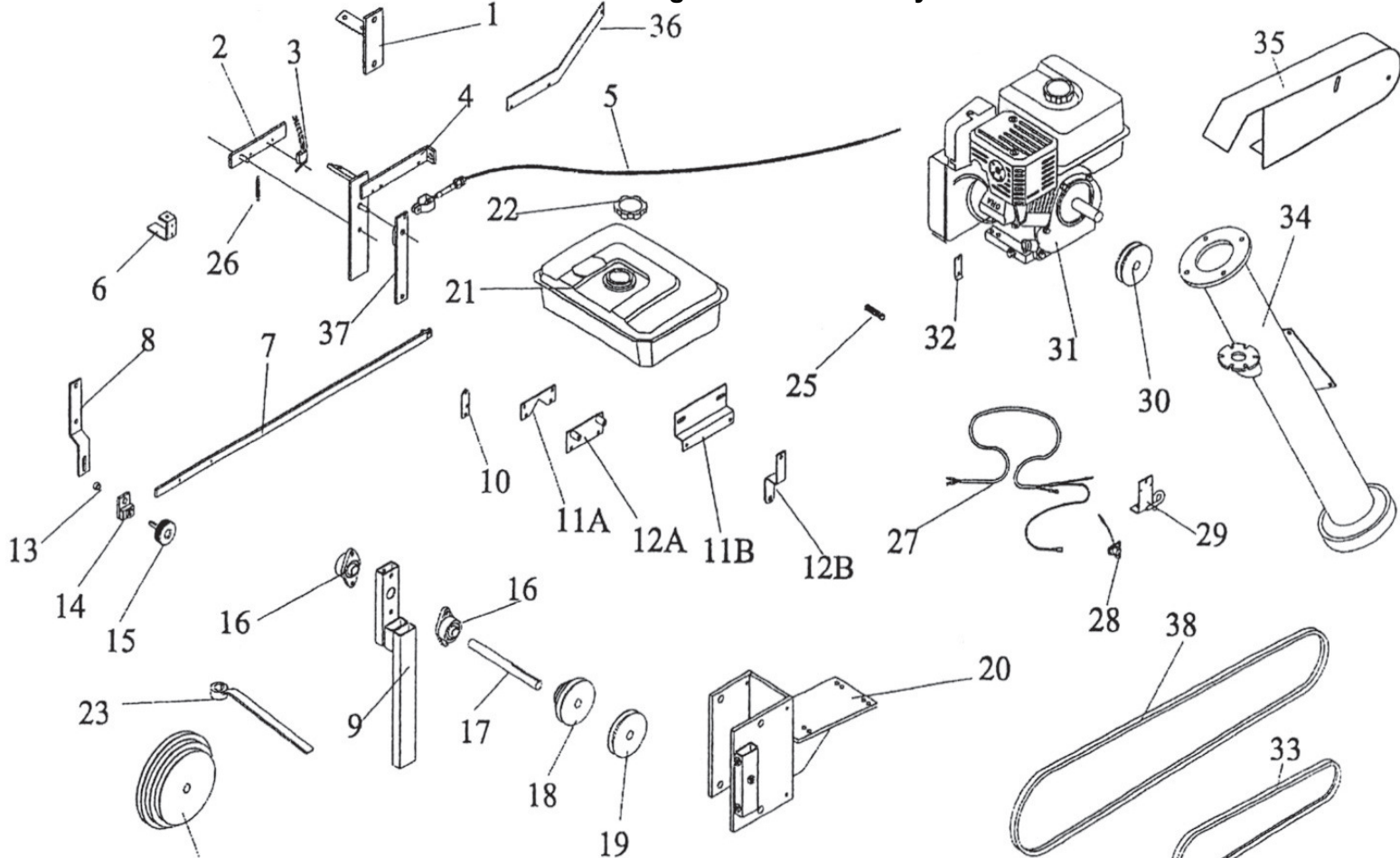
17	523-5421-0	Hitch, Chain		1
18	593-0264-0	Wheel, 8 x 5.75 4 Bolt 4" BCD		1
19A	593-0265-0	Tire, 16 x 6.5 x 8.4 Ply x 8"		1
19B	593-0265-1	Tube, Inner 16 x 6.5 x 8"		1
19C	595-0606-0	Wheel & Tire, 16 x 6"50 x 8 4PG		1
20	588-0254-1	Wheel, 15 x 4.5 x 4 Bolt 5" BCD		2
21A	227-0256-0	Tire, 6.7 x 15 4Ply		2
21B	227-0256-1	Tube, 5.9 & 6.7 x 15		2
22	589-0062-0	Hub Cap Wilton 909911		2
23	552-0944-0	Nut, 5/8 NF Slotted		2
24	553-0628-0	Machine Bushing, 1-1/2 x 1 x 18 Ga		2
25	515-0942-0	Bearing, Timken LM11949		2
26	510-0941-0	Race, Outer LM11910		2
27	589-0063-0	Bolt, Wilton 9435491		8
28	589-0065-0	Hub, with Cups Only W633		2
29	510-09400-0	Race Inner LM 67010		2
30	515-0939-0	Bearing Timken LM67048		2
31	589-0066-0	Seal CR 14975		2
32	588-0356-5	Seal CR 12437		2
33	551-1602-0	Nut, 1" NFF Slotted		2

### Sprinkler Cart Assembly



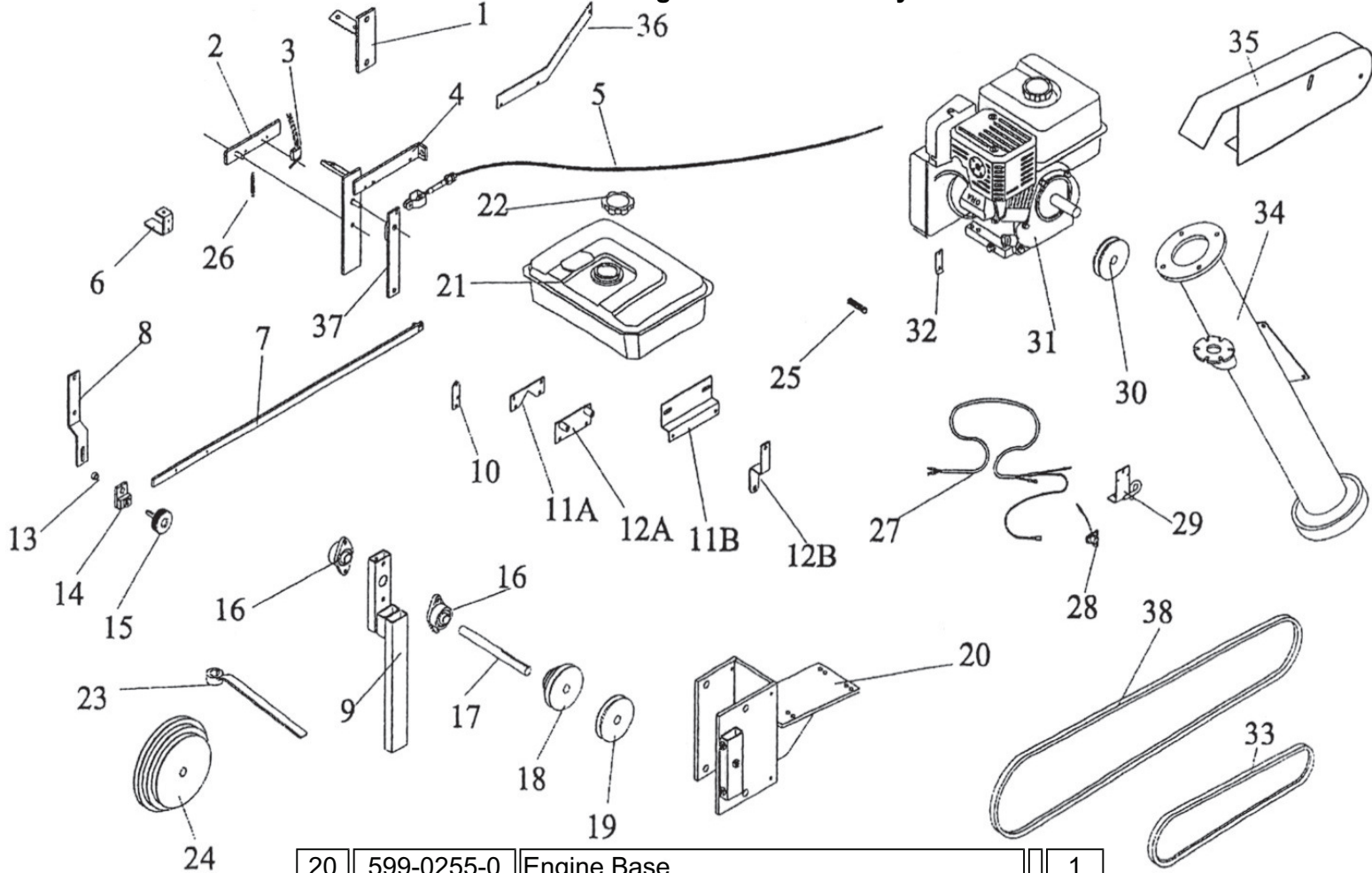
35	060-0245-0	Sleeve		1
36	588-0356-3	Bearing L44643		2
37	588-0356-0	Bolt, Lug		4
38	588-0356-6	Race L44610		2
39	595-0493-0	Spindle Rear		2

## Mechanical Engine Drive Assembly



No.	Part Number	Description	Qty.
1	599-0415-0	Adptr. Throttle Mt.	1
2	599-0041-1	Switch Arm 40A/45A	1
3	586-0075-0	Switch, Chery E/72-40H	1
4	599-00399-2	Throttle Brkt. 40A	1
5	599-0132-0	Throttle Control Cable	1
6	599-0405-1	Switch Ramp 40A	1
7	599-0419-0	Throttle Rod	1
8	599-0420-0	Arm, Comp. Brkt.	1
9	599-0253-1	Jackshaft Mt.	1
10	599-0066-0	Throttle Mt.	1
11A	599-0231-0	Plate, Tank Mt. Robin	1
11B	599-0375-0	Plate, Tank Mt. Honda	1
12A	599-0484-0	Plate, Tank Mt. Robin	1
12B	599-0376-0	Plate, Tank Mt. Honda	1
13	512-4847-0	Bush. Stl. .56 x .40 x .32L	1
14	599-0027-0	Swivel	1
15	526-5670-0	Knob, 3/8 x 1.0 Stud	1
16	599-0338-0	Bearing, 2 Hole Flange (Cast Iron Housing)	1
17	599-0277-0	Jack Shaft	1
18	599-0084-0	Pulley, 3 Step 2-3-4 3/4" Bore	1
19	599-0341-0	Pulley, 3" x 3/4" Bore	1

## Mechanical Engine Drive Assembly



20	599-0255-0	Engine Base	1
21A	599-0219-0	Fuel Tank Robin 8HP	1
21B	599-0443-0	Fuel tank Honda 8.5HP	1
22A	599-0221-0	Cap Robin	1
22B	599-0221-1	Cap Honda	1
23	599-0421-0	Shift Arm	1
24	022-0593-1	Pulley, 166mm x 191mm x 213mm	1
25	450-4858-2	Spring, .5 OD x 2 Long x .047 Wire	1
26	599-0422-0	Spring, .045w x .38 OD x 2.5 " Long	1
27	599-0324-0	Wire Harness A Series 340	1
28	599-0279-0	Switch, Robin Shut Off	1
29	599-0344-0	Switch Holder	1
30	599-0293-0	Pulley, 2.0" x 3/4" Bore	1
31B	598-0141-1	Engine 4HP Robin Keyed Shaft	1
31A	599-0442-0	Engine 4HP Honda Keyed Shaft	1
32	599-0265-0	Spring Holder	1
33	599-0337-0	Belt, AX, 37	1
34	599-0075-4	Entry Fitting 40A	1
35	599-0500-0	Shield	1
36	599-0485-0	Brkt. Throttle Cable	1
37	599-0035-0	Bracket	1
38	599-0428-0	Belt, AX 77	1