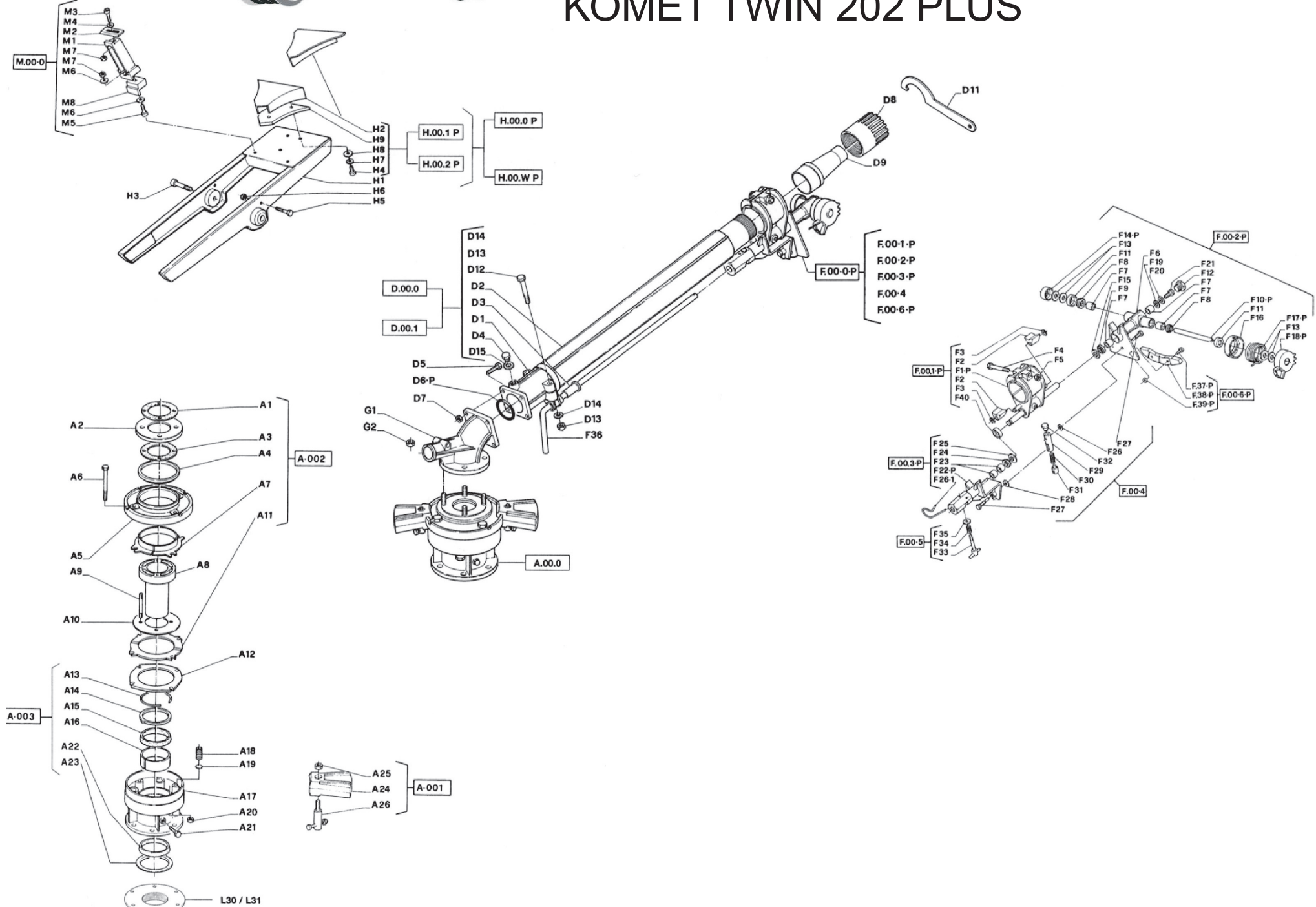




# KOMET TWIN 160 PLUS KOMET TWIN 202 PLUS





# KOMET TWIN 160 PLUS

# KOMET TWIN 202 PLUS

No.	160 Part Number	202 Part Number	Description	Qty.
A.00-0	077-0020-0	077-0020-0	Assembly-Bearing (contains items noted with @)	1
A.00-2	077-0021-0	077-0021-0	Assembly-Brake Disks (contains items noted with ^)	1
A.00-3	077-0003-0	077-0003-0	Assembly-Bearing-Seals (contains items noted with *)	1
^ A.1	-----	-----	Elbow Gasket	1
A.2	077-0004-0	077-0004-0	Anti-Dust Cover	1
^ A.3	-----	-----	Flange Gasket	1
^ A.4	-----	-----	Anti-Dust Ring	1
A.5	077-0005-0	077-0005-0	Brake Cap	1
A.6	077-0006-0	077-0006-0	Bolt	4
^ A.7	-----	-----	Brake Lining	1
A.8	077-0007-0	077-0007-0	Braking Cylinder	1
A.9	077-0001-0	077-0001-0	Bolt	4
A.10	077-0002-0	077-0002-0	Brake Flange	1
^ A.11	-----	-----	Friction Disc	1
A.12	077-0010-0	077-0010-0	Friction Pressure plate	1
* A.13	-----	-----	Snap Ring	1
* A.14	-----	-----	Retaining Ring	1
* A.15	-----	-----	Main Seal	1
* A.16	-----	-----	Bearing	1
A.17	077-0011-0	077-0011-0	Housing	1
A.18	077-0012-0	077-0012-0	Friction Spring	4
A.19	077-0013-0	077-0013-0	Pad	4
A.20	077-0014-0	077-0014-0	Nut	4
A.21	077-0015-0	077-0015-0	Grease Fitting Plug	1
* A.22	-----	-----	Main Seal	1
* A.23	-----	-----	Anti-Sand Ring	1
A.00-1	077-0016-0	077-0016-0	Assembly-Stop Lever (Contains items noted with &)	
& A.24	-----	-----	Stop Lever	4
& A.25	-----	-----	Nut	2
& A.26	-----	-----	Bolt	2
L.30	077-0017-0	077-0017-0	Adapter/ Thread 3" NPTF	1
L.31	077-0018-0	077-0018-0	Adapter/ Thread 3" BSPF	1



# KOMET TWIN 160 PLUS

# KOMET TWIN 202 PLUS

No.	160 Part No.	202 Part No.	Description	Qty.	
	D.00-0	077-0019-0	077-0086-0	Assembly- Barrel Standard Type- (Contains Items Noted with ^)	1
	D.00-1	077-0020-0	-----	Assembly- Barrel Waste Water Type-4 Vains (Contains Items Noted with ^)	1
^	D.1	-----	-----	Flange	1
^	D.2	-----	-----	Tube	1
^	D.3	077-0021-0	077-0021-0	Rod Bushing	1
^	D.4	077-0022-0	077-0022-0	Gauge Plug	1
	D.5	077-0023-0	077-0023-0	Bolt	4
	D.6-P	077-0024-0	077-0024-0	Gasket	
	D.7	077-0025-0	077-0025-0	Nut	4
	D.8	077-0026-0	077-0026-0	Nozzle Cap BC/U	
	D.9	077-0027-0	077-0027-0	Taper Bore Nozzle UN	
	D.11	077-0028-0	077-0028-0	Service Key CH/BCU	
^	D.12	077-0029-0	077-0029-0	Bolt	2
^	D.13	077-0030-0	077-0030-0	Nut	2
^	D.14	077-0031-0	077-0031-0	Washer	2
^	D.15	077-0032-0	077-0032-0	O-Ring	
	G.1	077-0033-0	077-0033-0	Elbow 24° CU/24	
	G.2	077-0034-0	077-0034-0	Nut	4
	H.00-0-P	077-0035-0	077-0035-0	Assembly- Drive Arm - Standard	
	H.00-W-P	077-0036-0	077-0036-0	Assembly- Drive Arm Waste Water	
	H.1-P	-----	-----	Drive Arm	
	H.00-1-P	077-0037-0	077-0037-0	Assembly - Deflector- Standard (Contains Items Noted with *)	
	H.00-1-P	077-0037-1	77-0037-1	Deflector	
	H.00-2-P	077-0038-0	077-0038-0	Assembly- Deflector - Waste Water (Contains Items Noted with *)	
*	H.2-P	-----	-----	Deflector	
	H.3-P	077-0039-0	077-0039-0	Bolt	2
*	H.4-P	-----	-----	Screw	3
	H.5-P	077-0040-0	077-0040-0	Bolt	1
	H.6-P	077-0041-0	077-0041-0	Nut	1
*	H.7-P	-----	-----	Washer	3
*	H.8-P	-----	-----	Washer	3
*	H.9-P	-----	-----	Plate	1
	UPG	077-0042-0	077-0042-0	Upgrade SR	1



# KOMET TWIN 160 PLUS

# KOMET TWIN 202 PLUS

No.	160 Part No.	202 Part No.	Description	Qty.	
	F.00-0-P	077-0043-0	077-0043-0	Assembly - Trip Leverage - (Contains Items Noted with	1
	F.00-1-P	077-0044-0	077-0044-0	Assembly - Bracket - (Contains Items Noted with ^)	1
^	F.1-P	-----	-----	Bracket	1
^	F.2	077-0045-0	077-0045-0	Stop Pad	2
^	F.3	077-0046-0	077-0046-0	Circlip	2
	F.4	077-0047-0	077-0047-0	Bolt	2
	F.5	077-0048-0	077-0048-0	Nut	2
	F.00-2-P	077-0049-0	077-0049-0	Assembly - Shift Lever Front (Contains Items Noted with *)	1
*	F.6	-----	-----	Shift Lever Front	1
*	F.7	-----	-----	Bushing	4
*	F.8	-----	-----	Seal	2
*	F.9	-----	-----	Seal	1
*	F.10-P	-----	-----	Fulcrum Shaft for Drive Arm	1
*	F.11	-----	-----	Cap	2
*	F.12	-----	-----	Plug	1
*	F.13	077-0050-0	077-0050-0	Washer	4
*	F.14-P	077-0051-0	077-0051-0	Cover	1
*	F.15	077-0052-0	077-0052-0	Washer	1
*	F.16	077-0053-0	077-0053-0	Spring housing Int	1
*	F.17-P	077-0054-0	077-0054-0	Spring Drive Arm	1
*	F.18-P	077-0055-0	077-0055-0	Spring Housing Ext.	1
*	F.19	077-0056-0	077-0056-0	Washer	1
*	F.20	077-0057-0	077-0057-0	Washer	1
*	F.21	077-0058-0	077-0058-0	Bolt	1
	F.00-3-P	077-0059-0	077-0059-0	Assembly- Shift Lever Rear (Contains Items Noted with #)	1
#	F.22-P	-----	-----	Shift Lever Rear	1
#	F.23	-----	-----	Bushing	2
#	F.24	-----	-----	Seal	1
#	F.25	-----	-----	Washer	1
#	F.26-1	077-0060-0	077-0060-0	Pin	1



# KOMET TWIN 160 PLUS

# KOMET TWIN 202 PLUS

No.	160 Part No.	202 Part No.	Description	Qty.	
	F.00-4	077-0061-0	077-0061-0	Assembly - Trip Spring (Contains Items Noted with ~)	1
~	F.27	-----	-----	Bolt	2
~	F.28	-----	-----	Washer	2
~	F.29	-----	-----	Spring Guide	1
~	F.30	-----	-----	Trip Spring	1
~	F.31	-----	-----	Guide	1
~	F.32	-----	-----	Stopper	1
	F.00-5	077-0062-0	077-0062-0	Assembly- Trip Bolt (Contains Items Noted with @)	1
@	F.33	-----	-----	Bolt	1
@	F.34	-----	-----	Spring	1
@	F.35	-----	-----	Washer	1
	F.36	077-0063-0	077-0130-0	Reverse Rod	1
	F.00-6-P	077-0064-0	077-0064-1	Assembly- Stopper (Contains Items Noted with \$)	1
\$	F.37-P	-----	-----	Bolt	2
\$	F.38-P	-----	-----	Stopper for drive arm	1
\$	F.39-P	-----	-----	Nut	2
	F.40	077-0065-0	077-0065-0	Dust Ring	1
	M.00-0-P	077-0066-0	077-0066-0	Assembly- Jet Brake (Contains Items Noted with *)	1
*	M.1-P	-----	-----	Support	1
*	M.2-P	077-0067-0	077-0067-0	Blade	1
*	M.3-P	-----	-----	Bolt	1
*	M.4-P	-----	-----	Washer	1
*	M.5-P	-----	-----	Bolt	1
*	M.6-P	-----	-----	Washer	2
*	M.7-P	-----	-----	Nut	2
*	M.8-P	-----	-----	Base	1