



**Turbine Drive Water-Reels®
Engine Drive Slurry-Reels**

T40M / T45M
Squatter
(MG1)

Parts Manual

Serial No. 340,000 +



AG-RAIN®

700 S. Schrader Ave.
Havana, Illinois 62644
Phone: 309-543-4425
Fax: 309-543-4945

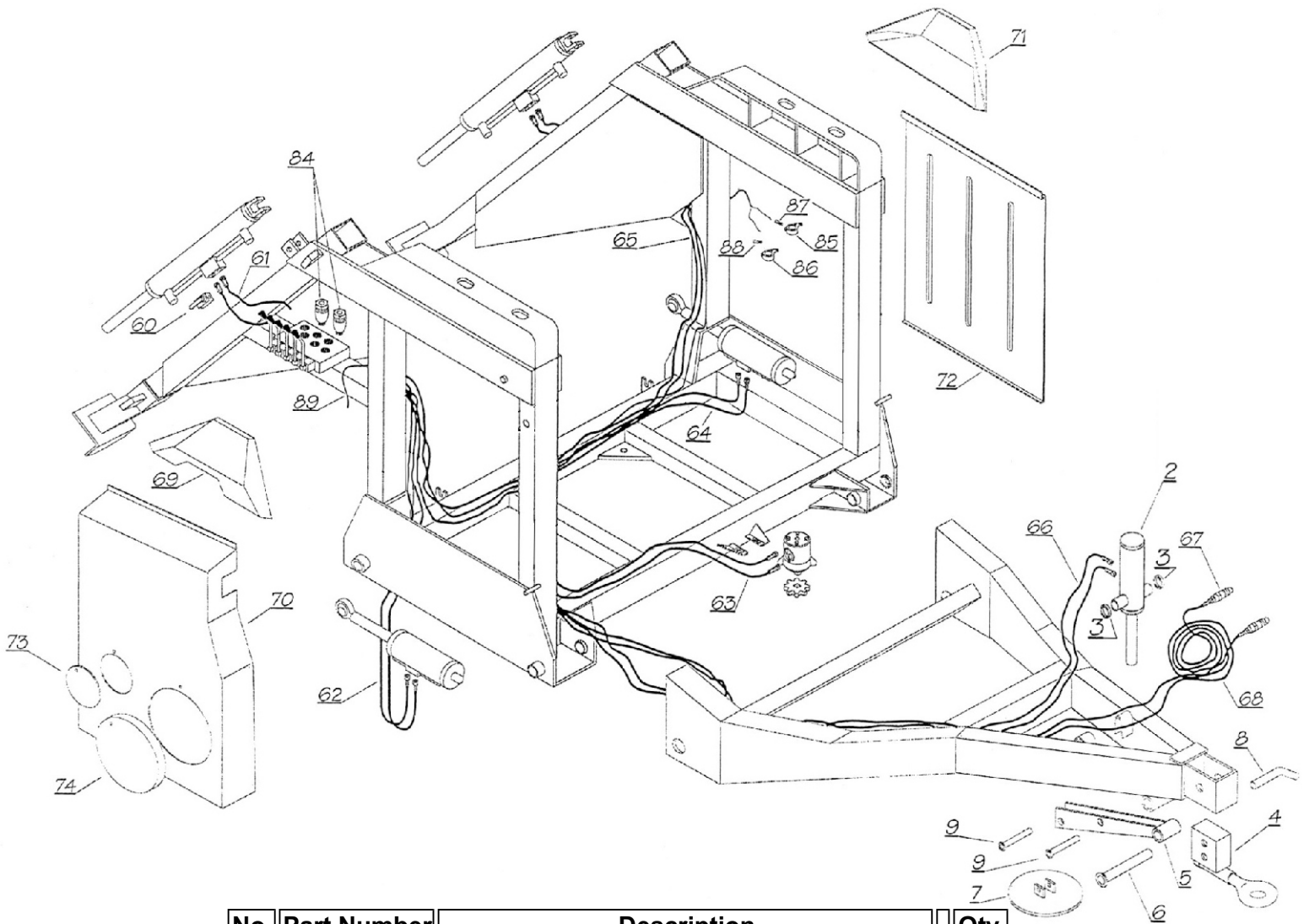
Assembly	Page
Frame Assembly	3-6
Spool Assembly	7-8
Levelwind Assembly	9
Shut Off Bar	10
Sprinkler Cart Lift Assembly	11
Drive Train With Out Brake Drum	12-14
Drive Train With Brake Drum	15-17
Gearbox	18-20
Turbine	21-24
Sprinkler Cart Assembly	25
Decals	26

Notes:

For Parts That Are Described As "Left" Or "Right" The Water Inlet Side Of The Machine Is Considered The Right Side.

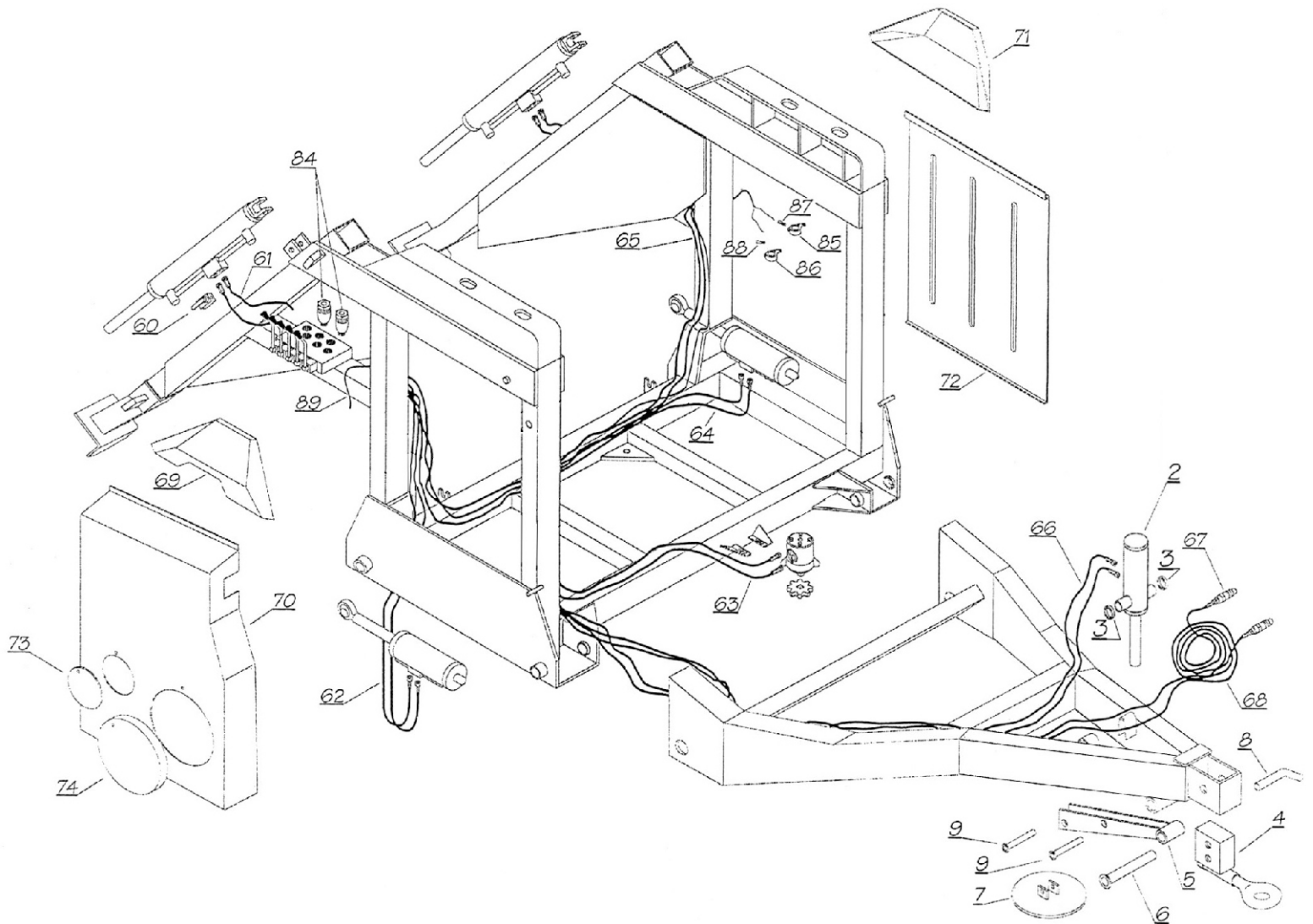
Items Such As Common Fasteners, Grease Fitting, And Other Small Parts Easy To Acquire Locally Are Not Listed.

Frame Assembly



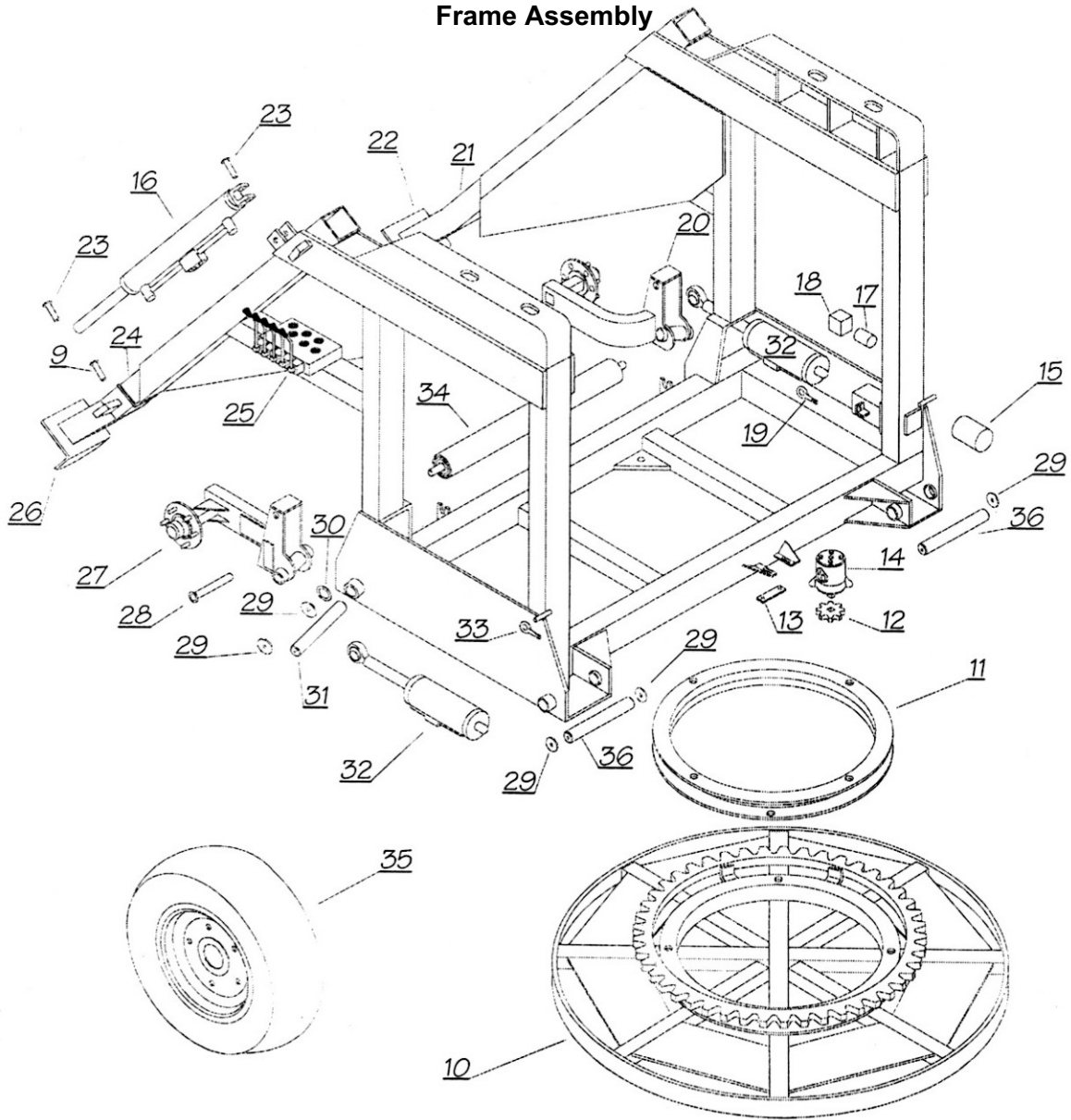
No.	Part Number	Description	Qty.
2	022-0870-0	Jack, Hydraulic	1
3	022-1324-0	Spacer	1
4	022-1325-0	Hitch	1
6	022-0520-1	Pin	1
7	022-1239-0	Foot, Jack	1
8	022-0865-0	Pin	1
9	022-0873-0	Shaft	1
60	022-1279-0	Valve, 1/4"	1
61	022-1280-0	Hose Assembly-R1T elbow x straight 0.7 M	2
62	022-0891-0	Hose Assembly-R1T elbow x straight 1.8 M	2
63	022-1281-0	Hose Assembly-R1T elbow x elbow 2.6 M	2
64	022-1282-0	Hose Assembly-R1T elbow x straight 3.7 M	2
65	022-1283-0	Hose Assembly-R1T elbow x elbow 4.7 M	2
66	022-0892-0	Hose Assembly-R1T elbow x straight 3.6 M	2
67	022-0896-0	Fitting	2
68	022-1284-0	Hose Assembly-R1T elbow x straight 13.0 M	2
69	022-1346-0	Shield Hydraulic Distributor	1
70	022-1022-0	Turbine Shield	1

Frame Assembly



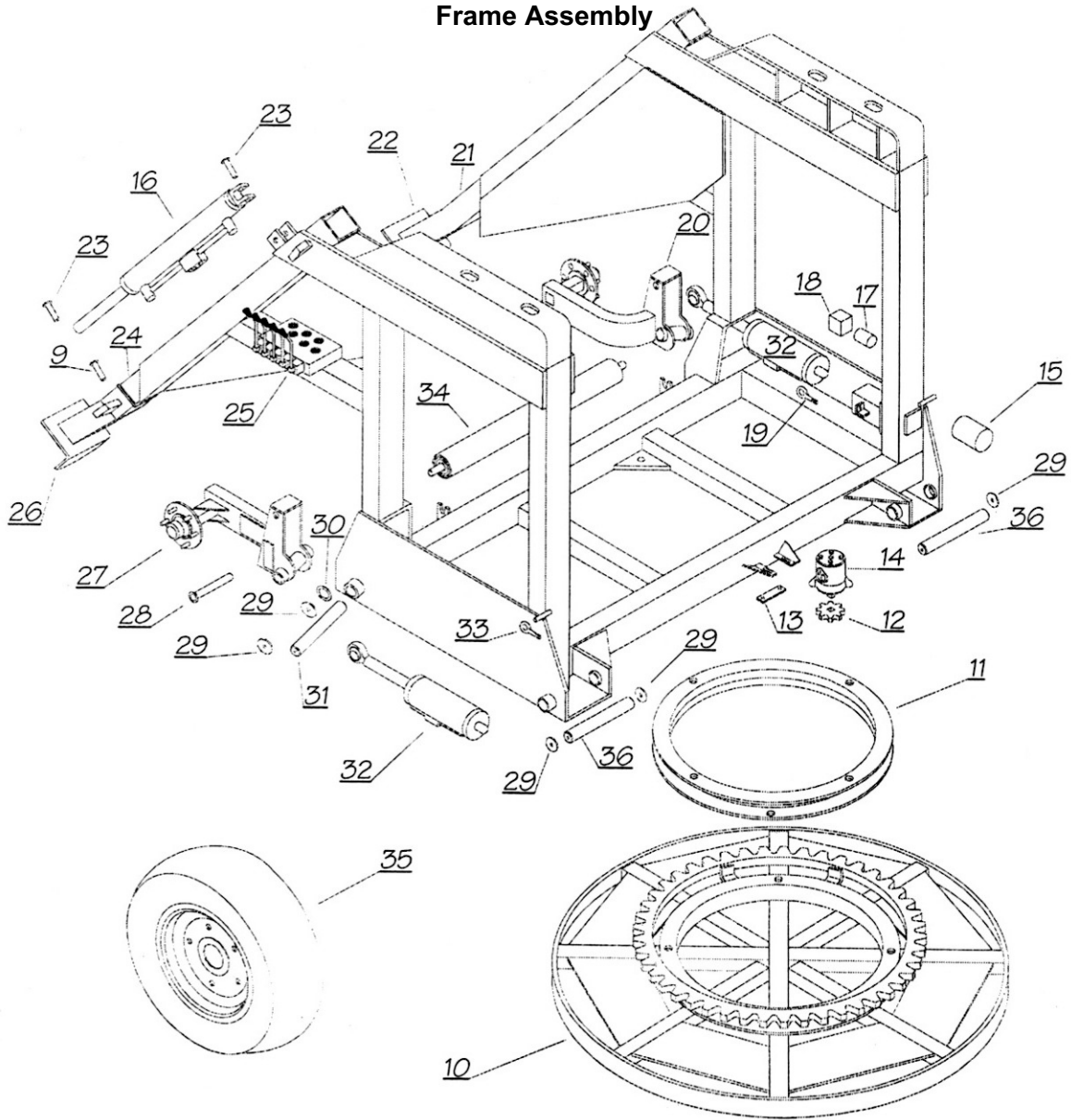
71	022-1347-0	Battery Shield	1
72	022-1016-0	Shield	1
73	022-0540-0	Shield, PTO	1
74	022-0749-0	Shield	1
84	022-1287-0	Flow Control Valve 1/4"	1
85	022-1292-0	Connector - Positive	1
86	022-1290-0	Connector - Negative	1
87	022-1291-0	Red Eyelet	1
88	022-1291-0	Blue Eyelet	1
89	022-1293-0	Cable	

Frame Assembly



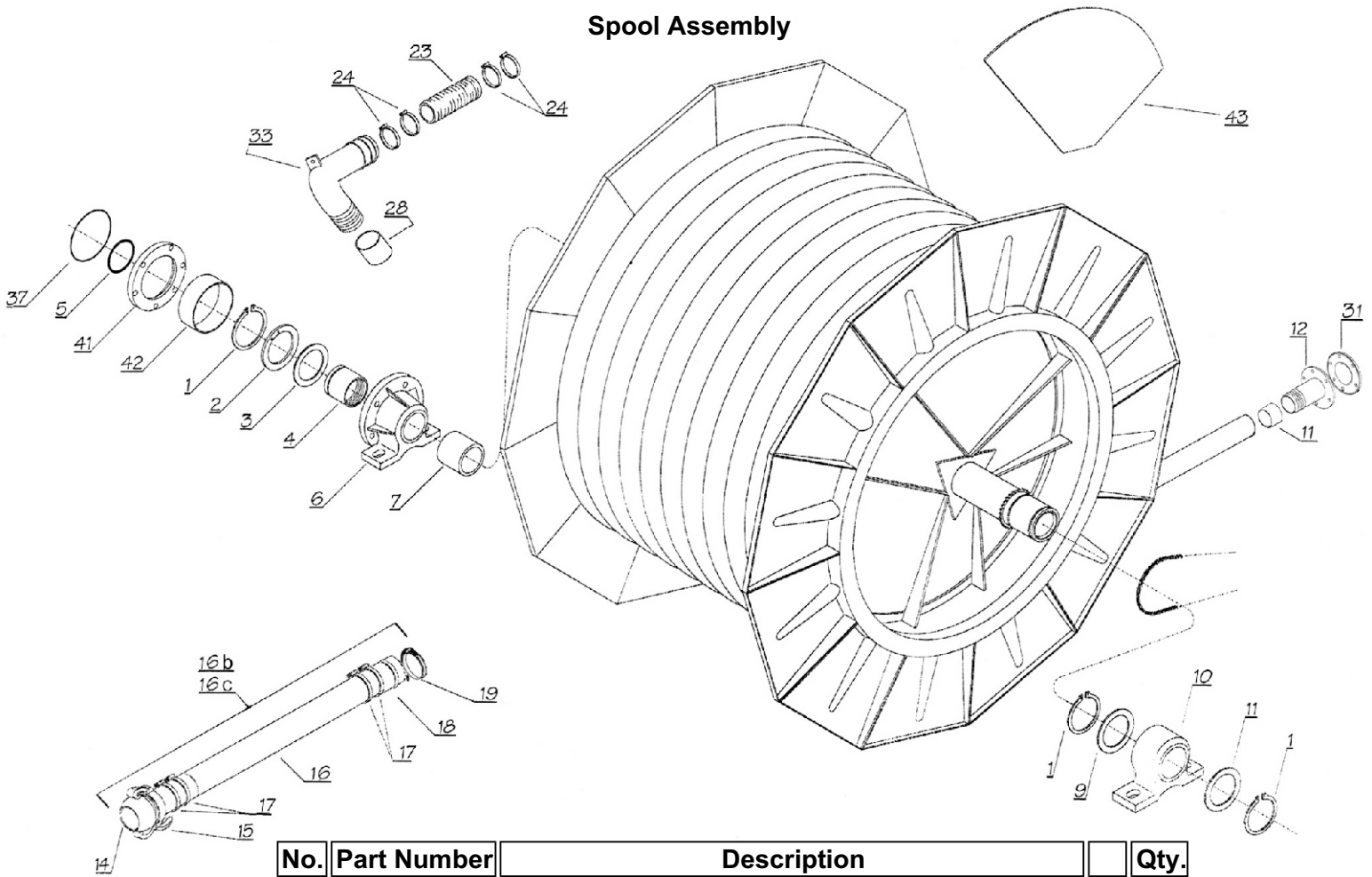
10	022-1326-0	Base	2
11	022-1327-0	Turntable Bearing	1
12	022-0877-0	Gear	1
13	022-1266-0	Plate	1
14	022-0875-0	Motor, Hydraulic	1
15	022-1328-0	Snubbing Device	2
16	022-0882-0	Cylinder	2
17	022-1329-0	Snubbing Device	2
18	022-1330-0	Suspension Spacer	2
19	022-1331-0	Stretcher Eyelet	2
20	022-1332-0	Strut Assembly - Left Wheel	1
21	022-1333-0	Left Leg	1
22	022-1334-0	Feet-Chain Side	1
23	022-0893-0	Shaft Dia. 25mm x 55mm	4
24	022-1335-0	Right Leg	1
25	022-1272-0	Valve Assembly	1
26	022-1336-0	Feet-Turbine Side	1

Frame Assembly



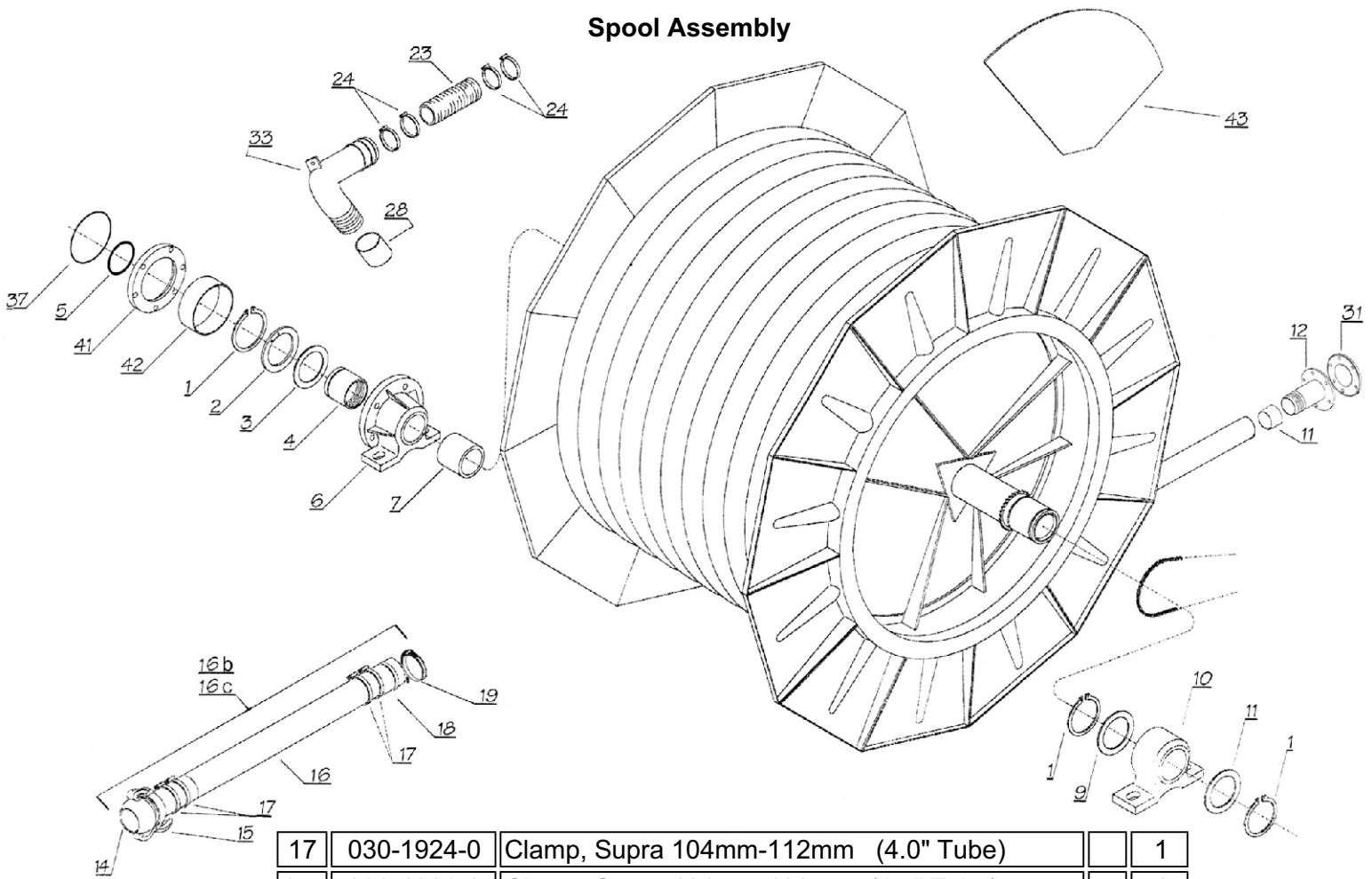
27a	022-1337-0	Strut Assembly - Right Wheel	4
27b	022-1449-0	Dust Cap for MG Wheel	1
28	022-0873-0	Pin	8
29	022-1338-0	Stop Washer	2
30	022-1339-0	Thrust Washer	2
31	022-1340-0	Shaft Dia. 40	2
32	022-1341-0	Cylinder Dia. 100 x 196	2
34	022-0887-0	Roller	1
35	022-1343-0	Wheel, 400-15.5 14PR	2
36	022-1344-0	Pin Dia. 40mm x 196mm	2
56	022-1345-0	Shield PTO Decompressor	1

Pool Assembly



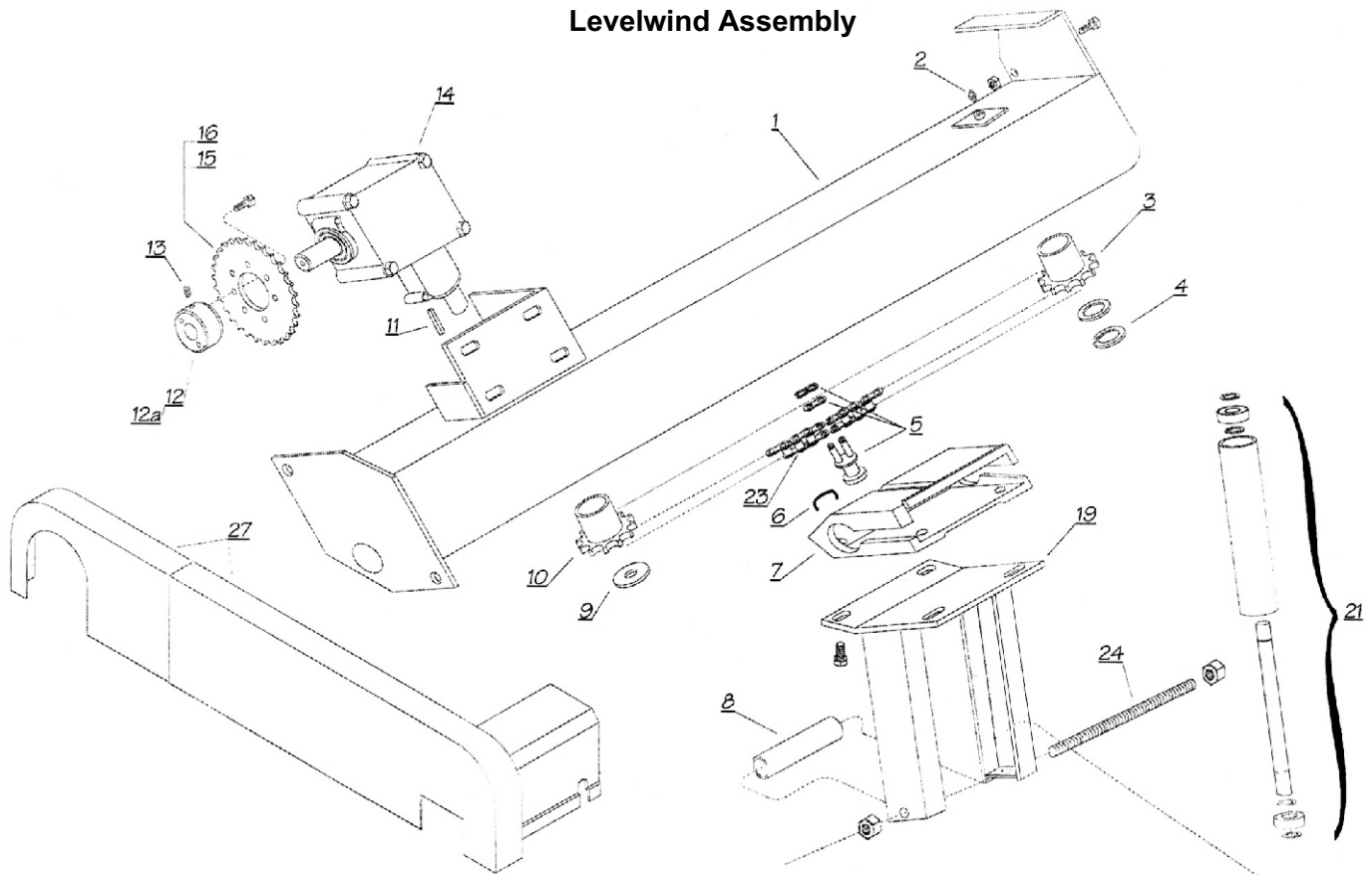
No.	Part Number	Description	Qty.
1	022-0044-0	Ring,Ret. With Screws	3
2	022-0045-0	Ring Slip Joint	1
3	022-0046-0	Antifriction ring	1
4	596-0245-2	Ring Nut	1
5	022-0486-0	O-ring 211	1
6	022-0048-0	Flanged Support	1
7	022-0755-0	Spacer	1
9	022-1353-0	Spacer w 5	1
10	020-0383-4	Hose Drum Support Dia. 135	1
11	020-0383-3	Hose Band 120mm (4.0" Tube)	1
11a	022-0843-0	Hose Band 135mm (4.5" Tube)	1
12	020-0383-7	Tube End (4.0" Tube)	1
12a	022-1350-0	Tube End (4.5" Tube)	1
14	588-0256-1	Hose End Outlet 4" Ball (4.0" Tube)	1
14a	588-0281-2	Hose End Outlet 5" Ball (4.5" Tube)	1
15	588-0023-1	Lever Ring 4" (4.0" Tube)	1
15a	588-0024-1	Lever Ring 5" (4.5" Tube)	1
16b	588-0284-0	Hose, Supply Complete Assembly (4.0" Tube)	1
16a	252-4962-0	Hose, Irrigation Supply (4.0" Tube)	1
16c	588-0284-6	Hoe Supply Complete Assembly (4.5" Tube)	1
16d	252-4961-0	Hose, Irrigation Supply (4.5" Tube)	1

Spool Assembly



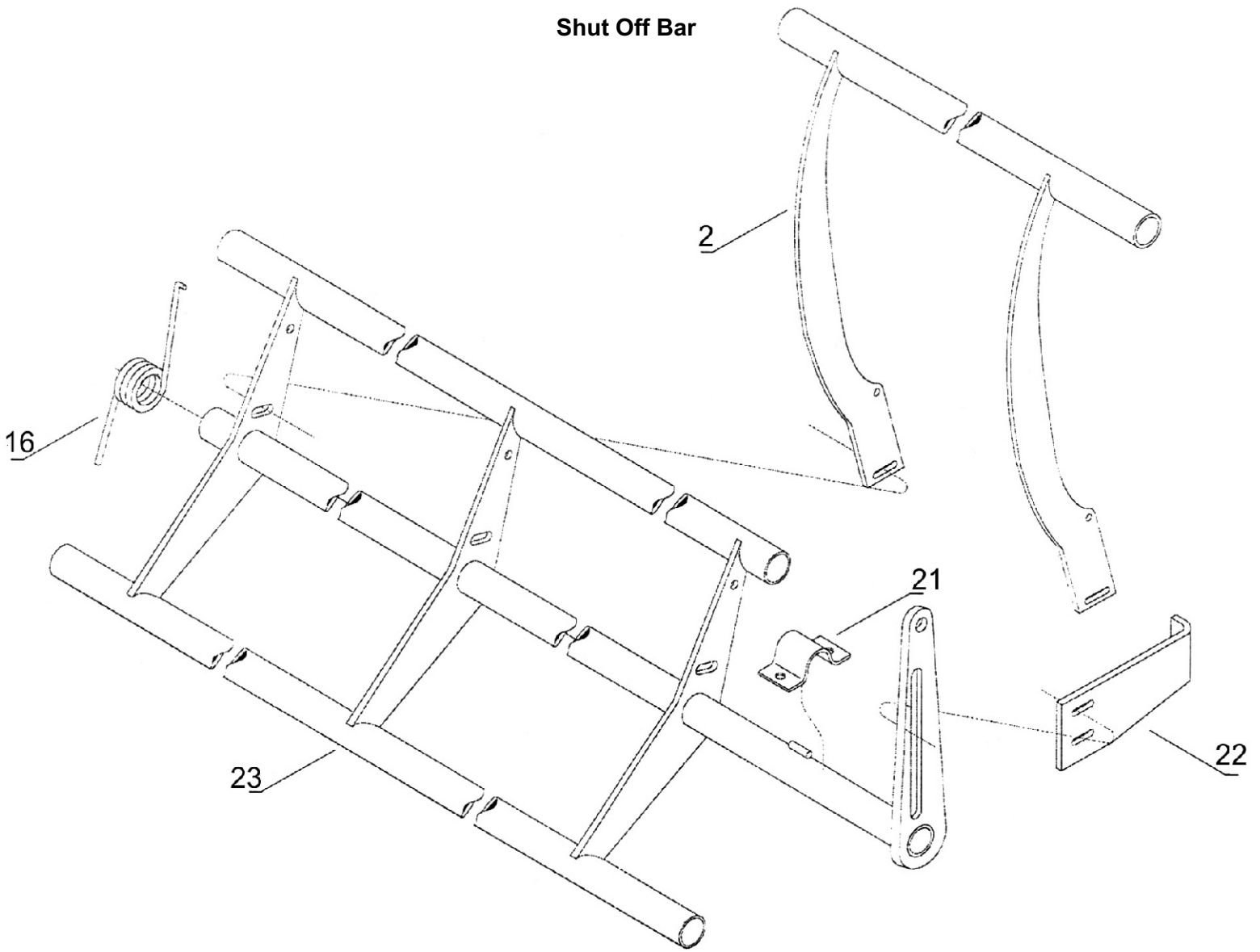
17	030-1924-0	Clamp, Supra 104mm-112mm (4.0" Tube)		1
17a	030-1926-6	Clamp, Supra 121mm-130mm (4.5" Tube)		1
18	588-0266-0	Hose End Inlet 4" (4.0" Tube)		1
18a	588-0281-3	Hose End Inlet 6" (4.5" Tube)		1
19	400-4927-0	Band Ring inlet 4" (4.0" Tube)		1
19a	400-4927-2	Band Ring Lock 6" (4.5" Tube)		1
23	020-9911-1	Hose 100 x 118 (4.0" Tube)		1
23a	020-0383-1	Hose 120 x 138 (4.5" Tube)		1
24	022-1310-1	Clip 113 x 121 (4.0" Tube)		1
24a	030-1816-7	Clip 131 x 140 (4.5" Tube)		1
28	020-0383-3	Dia. 120 Hose Ring (4.0" Tube)		1
28a	022-0843-0	Dia. 135 Hose Ring (4.5" Tube)		1
31	020-9920-2	Gasket		1
33	020-0382-5	Dia. 120 Elbow (4.0" Tube)		1
33a	022-1349-0	Dia. 135 Elbow (4.5" Tube)		1
37	465-4850-2	O-ring 4750		1
41	022-0753-0	Flange		1
42	022-0754-0	Spacer		1
43	022-0658-0	Spool		1

Levelwind Assembly



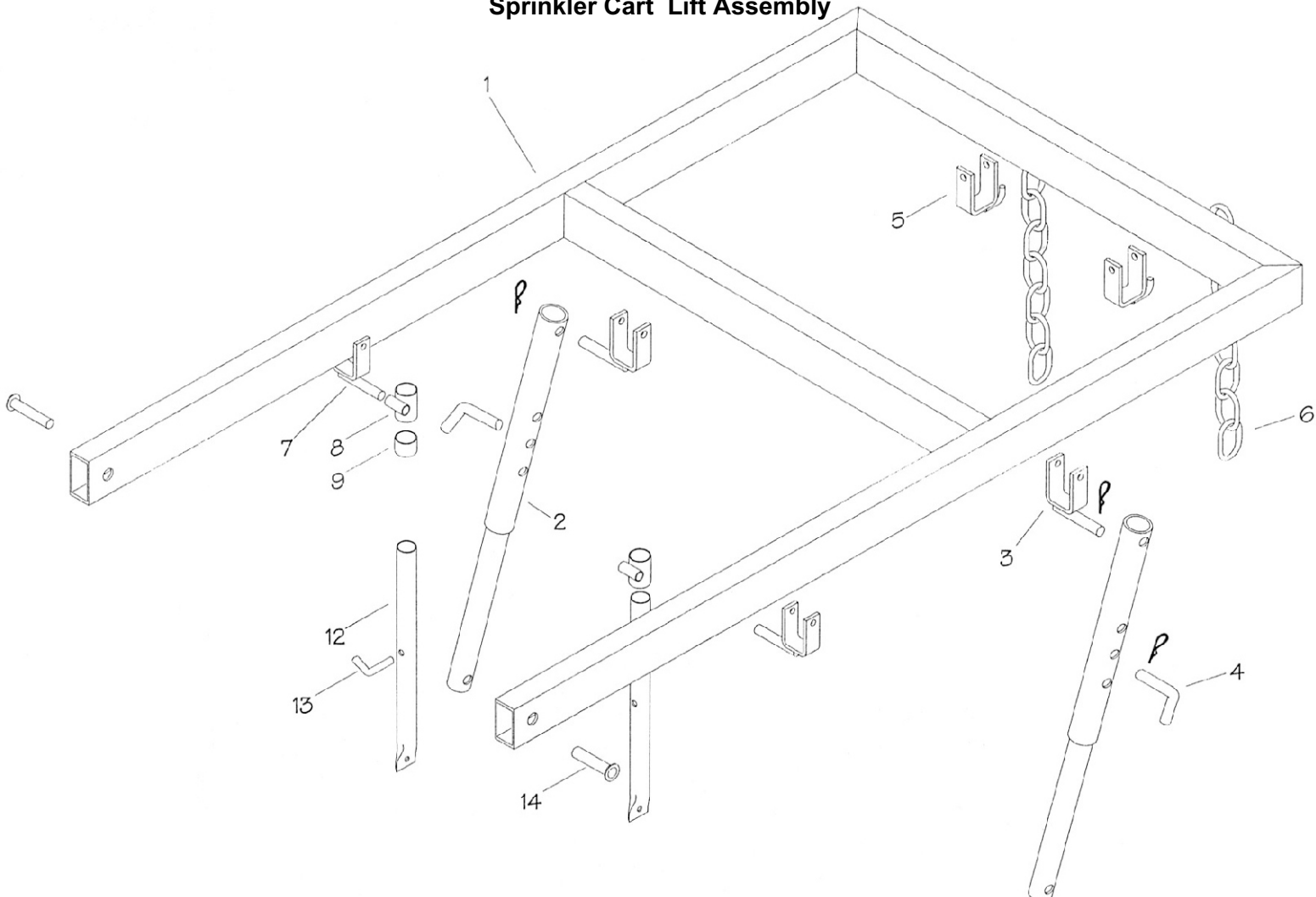
No.	Part Number	Description	Qty.
1	020-0486-6	Levelwind Frame	1
2	022-1320-0	Greaser	1
3	020-9914-8	Sprocket 1" Z10	1
4	022-0342-0	Retaining Ring E25	1
5	020-9914-3	Special Hoseguide Link	1
6	020-0077-6	Retaining Spring	1
7	020-0014-1	Fork Support	1
8	022-0528-0	Spacer	1
9		Washer	1
10	021-9915-1	Sprocket 1" Z10	1
11	022-0756-0	Key 8 x 25	1
12	022-0841-0	Sprocket hub x dia 125-135	1
12a	020-0015-3	Sprocket hub x dia. 100-110	1
13	020-0015-2	Grubscrew TC 12 x 25	1
14	022-0043-0	Gear Boxes	1
15	022-0086-9	Sprocket Z35 4.5" tube	1
16	020-9915-7	Sprocket Z40	1
19	022-1317-0	Fork for hose dia. 100-110	1
19a	022-1318-0	Fork for hose dia. 120	1
19b	022-1319-0	Fork for hose dia. 125-135	1
21	022-0911-0	Roller	2
23	020-0486-5	Chain 1" (111 rollers)	1
24	022-0134-0	Tie Rod	1
27	022-1236-0	Chain Shield	1

Shut Off Bar



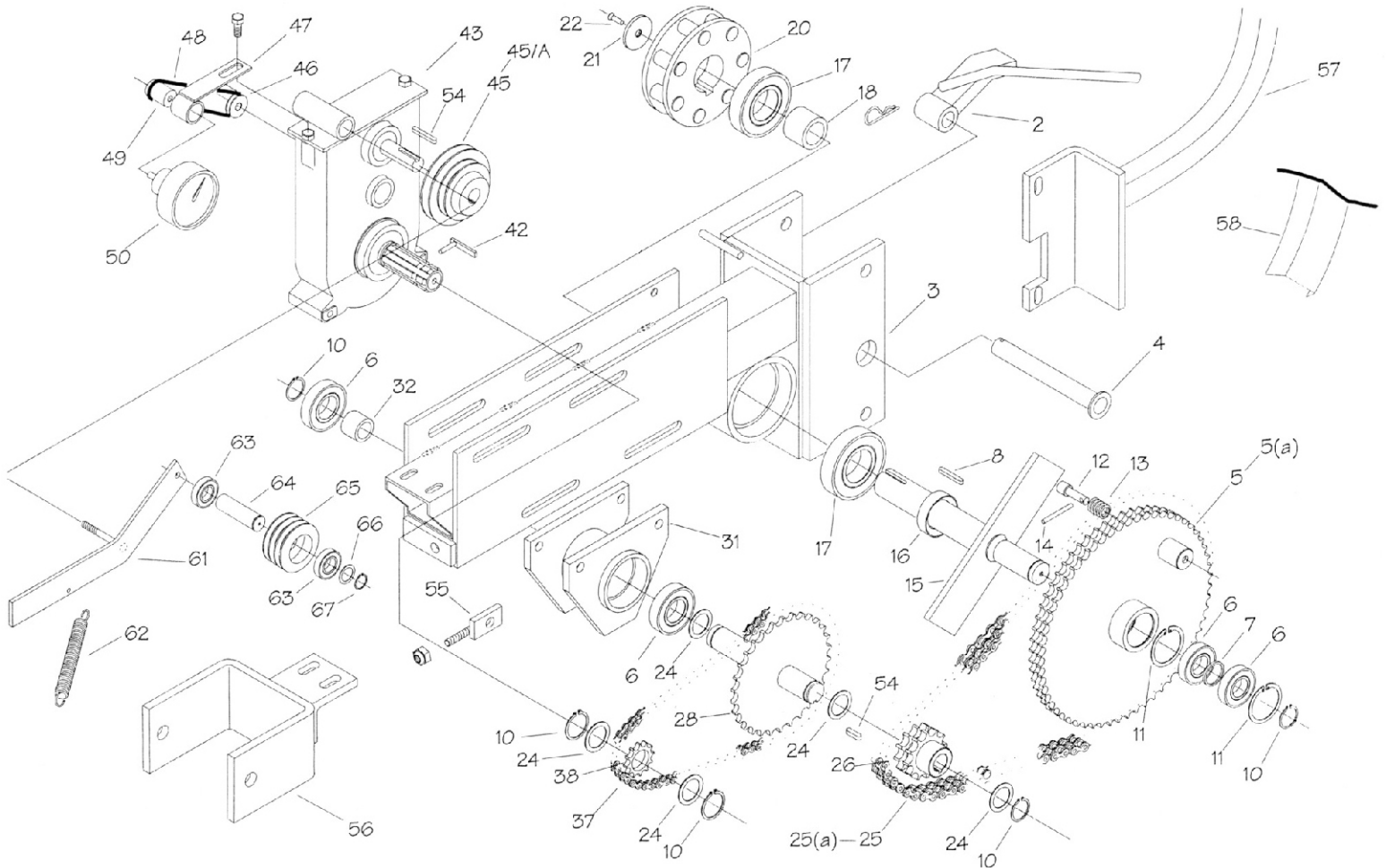
No.	Part Number	Description	Qty.
2	022-0758-0	Compensator Bar	1
16	020-0016-6	Spring	1
21	020-0016-1	Retainer	1
22	022-0759-0	Stop	1
23	022-0760-0	Shut Off Bar	1

Sprinkler Cart Lift Assembly



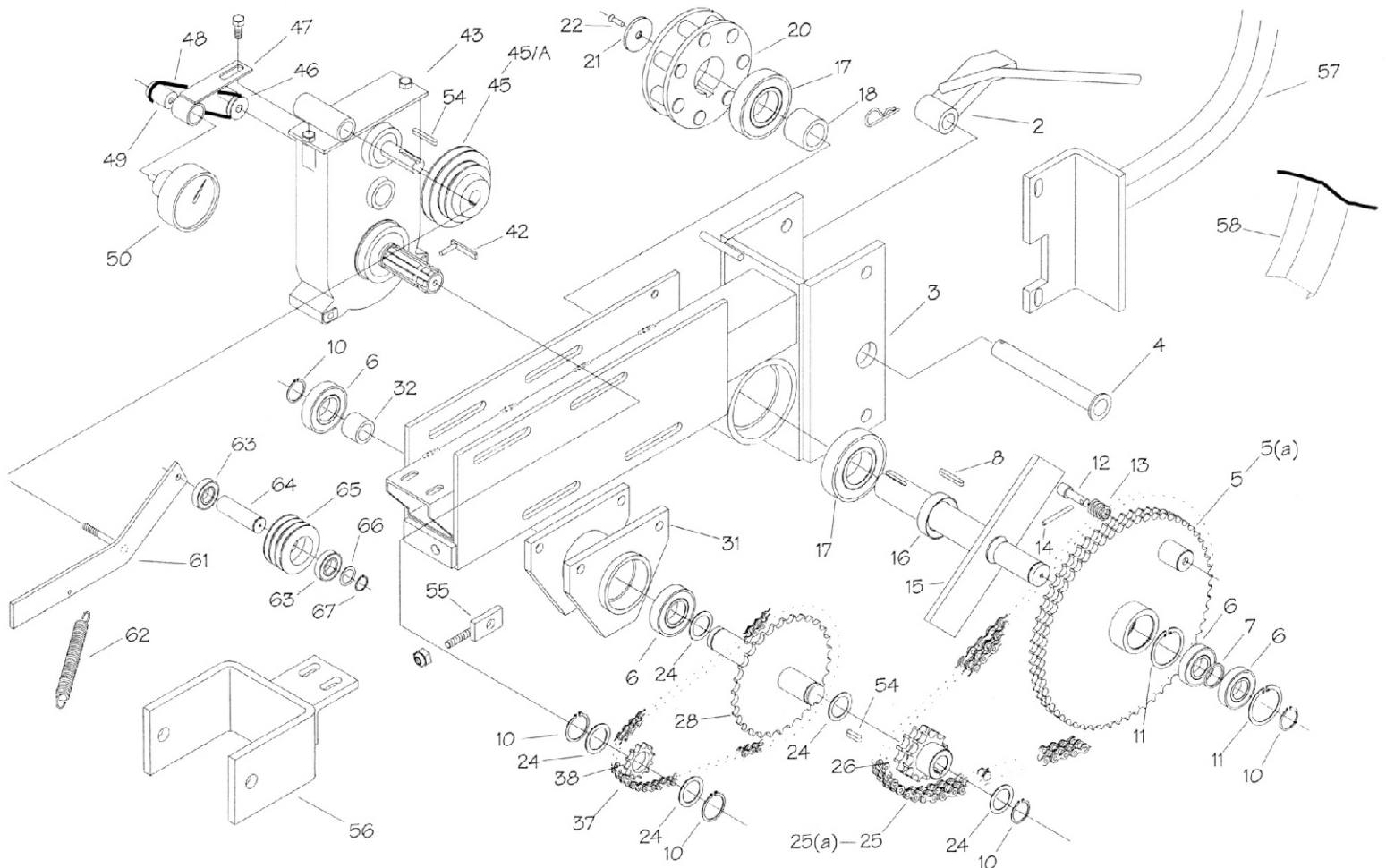
No.	Part Number	Description	Qty.
1	022-0321-0	Guncart Lift	1
2	022-0322-0	Back Brace	2
3	022-0919-0	Frame Support	2
4	022-0920-0	Pin	2
5	022-0921-0	Hanger	2
6	022-0922-0	Chain	
7	022-1296-0	Stop Rod	2
8	022-1216-0	Front Brace Holder	2
9	022-0323-0	Spacer	2
12	022-1218-0	Front Brace	2
13	022-1219-0	Pin	2
14	022-0924-0	Pin	2

Drive Train with out Brake Drum



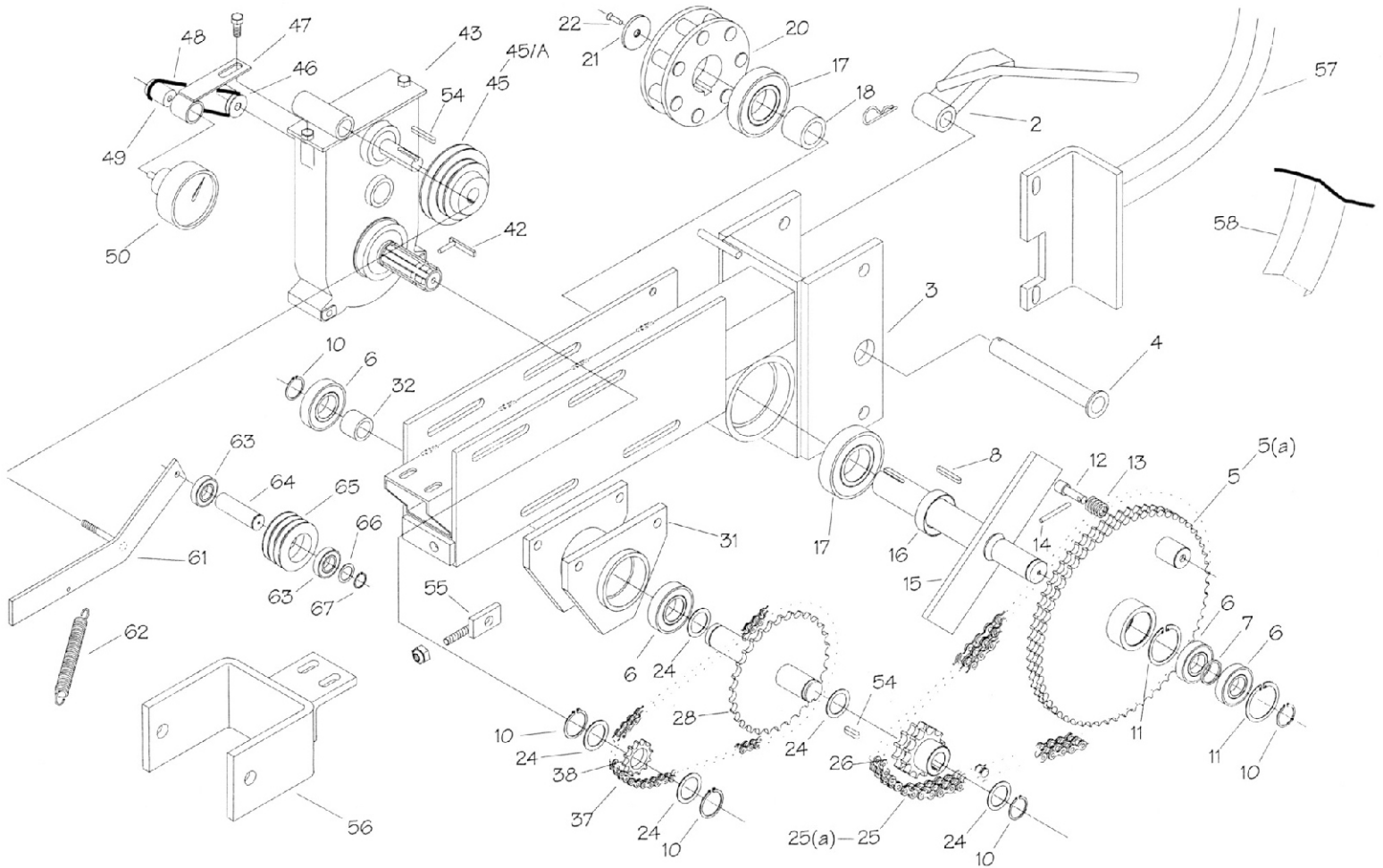
No.	Part Number	Description		Qty.
2	02205210	PAWL, NON RETURN FG1 & FF1		1
3	02216280	DRIVE TRAIN SUPPORT		1
4	02205200	PIN, ANTI REVERSE		1
5	02216290	GEAR, Z60 3/4" DOUBLE MG1		1
5a	02216291	GEAR, Z70 3/4" DOUBLE MG2		1
6	02203530	BEARING, 6207-2RS		4
7	02205000	SPACER		1
8	02216300	Key 16 x 50		1
10	02205340	SNAP RING E35		5
11	02204940	SNAP RING I72		2
12	02203490	PIN		1
13	02216310	SPRING DIA. 1,6		1
14	02203480	PIN		1
15	02204980	SHAFT DIA. 55 CHECK MEMO? 002707/A		1
16	02205020	SPACER		1
17	02205010	BEARING, 6211-2RS		2
18	02214700	SPACER, 55MM JACKSHAFT - FG1/MG2		1
20	02206070	PINION Z7 PIN DIA 26MM		1
24	02205060	WASHER, SPECIAL		1

Drive Train with out Brake Drum



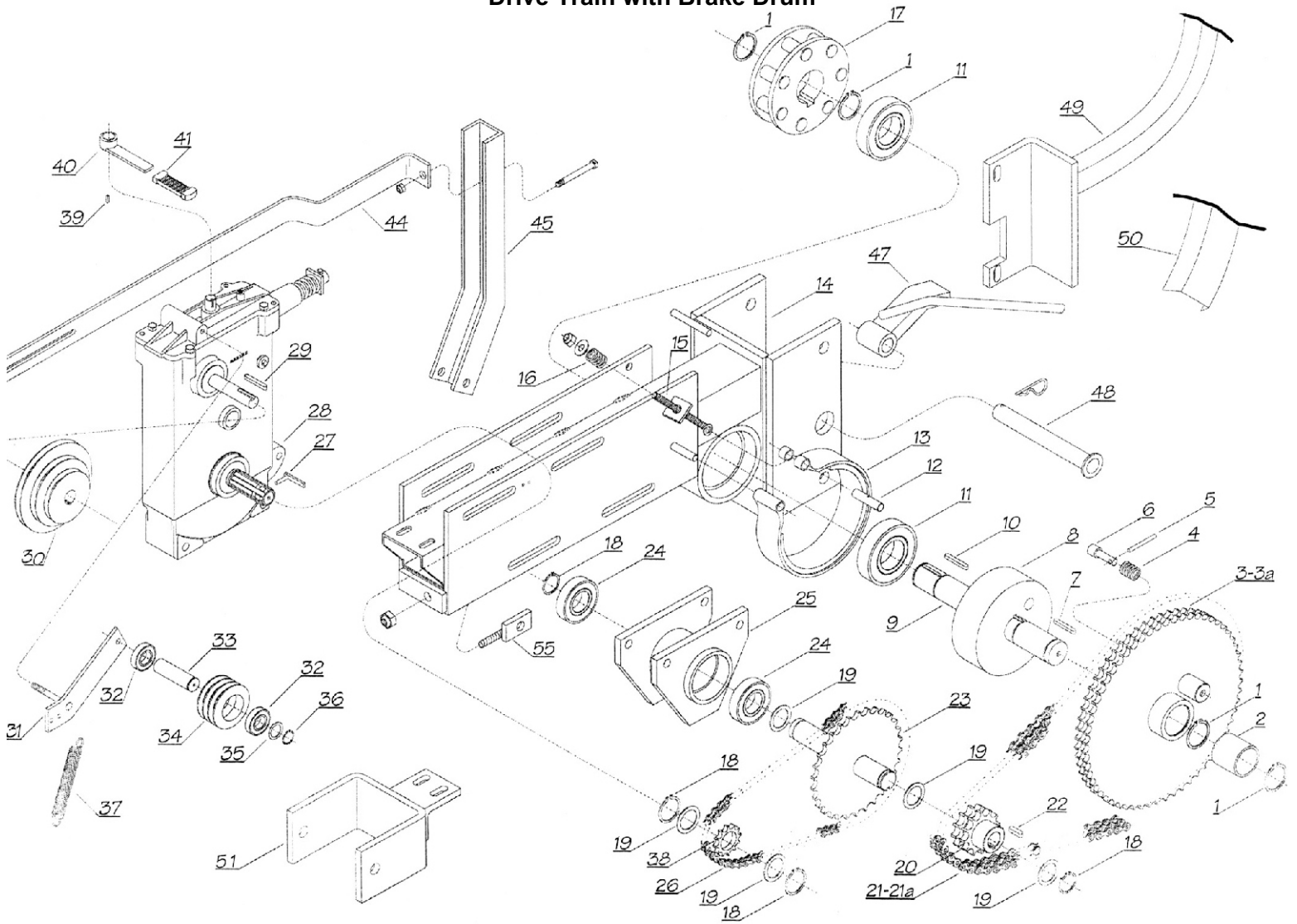
25	87548473	Chain 3/4" Double (77 rollers)		4.9 ft.
25a	87548473	Chain 3/4" Double (95 rollers)		6 ft.
26	02205110	SPROCKET 3/4"Z13 002945		1
28	02205090	SPROCKET 5/8"Z52 003591		1
31	02205030	BEARING,SUPPORT		1
32	02213110	SPACER 35 X 7		1
37	02001141	Chain 5/8" (68 Rollers)	FT.	3.54
38	02205140	SPROCKET 5/8"Z13 002445/B		1
45	02213980	PLLY,3 STEP 100M,125M,147		1
45a	02205920	PLLY,100MM,75MM,53MM3STEP W/SETSCR		1
46a	02214470	PULLEY, PVC DIA. 25.2 MG1		1
46b	02214480	PULLEY, PVC DIA. 21,6 MG2		1
47	02203670	BRACKET, TACHOMETER		1
48	02216320	GREEN BELT		1
49	02201190	PULLEY, GREEN TACH .788		1
50	02201200	TACHOMETER ASM,0-400 FT/HR A SERIES		1
54	02205510	KEY 6 X 50		1
56	02216330	END SUPPORT		1
57	02216340	Shield MT.		1
58	02215530	GUARD, SPOOL GEAR - MG1/2		1
61	02207450	ARM, IDLER - D2/FF1/FG1/MF1/MG1/2		1
62	02207460	SPRING, TIGHTENER		1

Drive Train with out Brake Drum



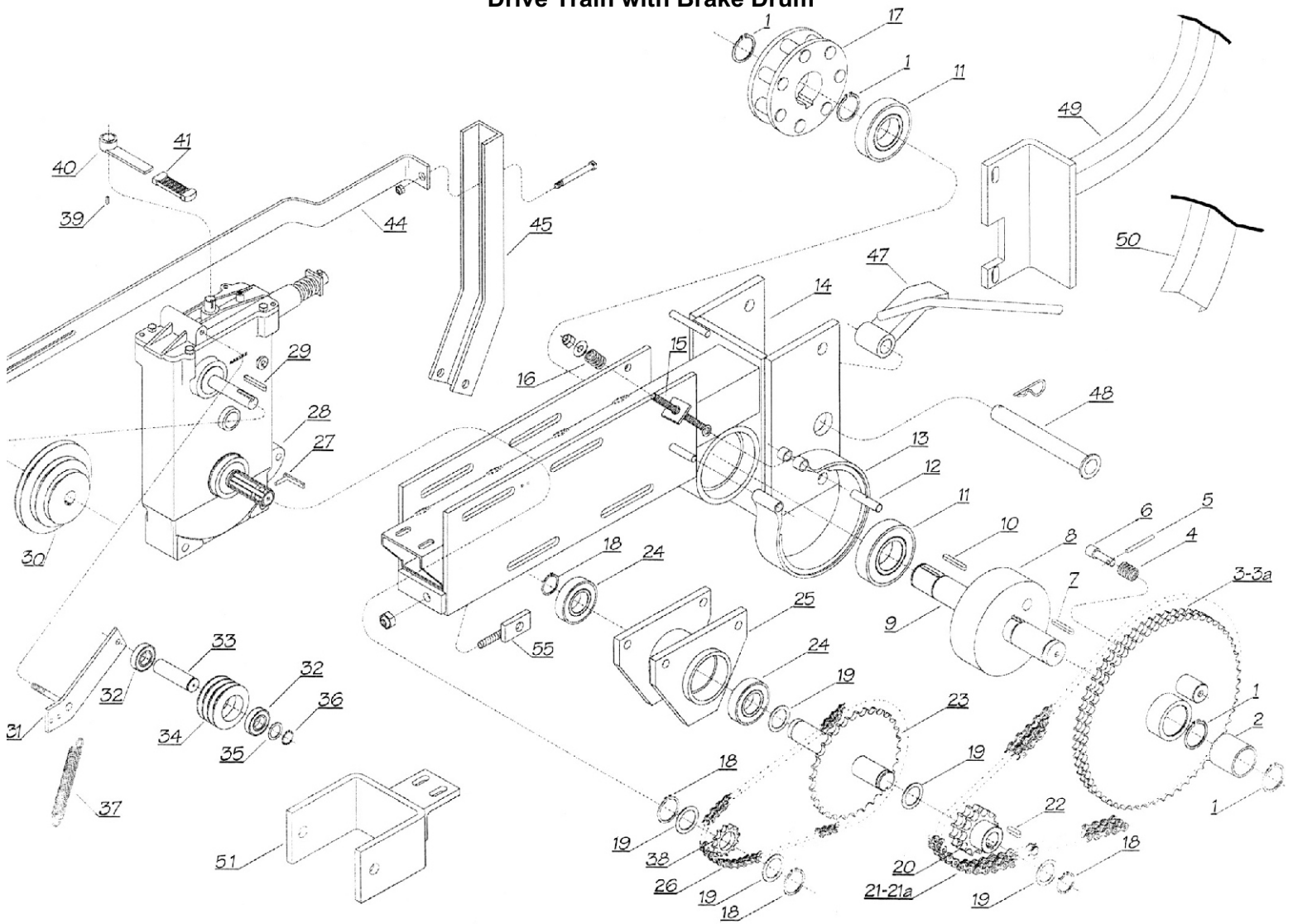
63	02214780	BEARING, 6205 2RS		2
64	02206530	SHAFT, BELT IDLER		1
65	02206540	PULLEY IDLER 3 GROOVE		1
66	02207030	SPACER 1MM X 25MM X 35MM		1
67	02203420	SNAP RING E25		1

Drive Train with Brake Drum



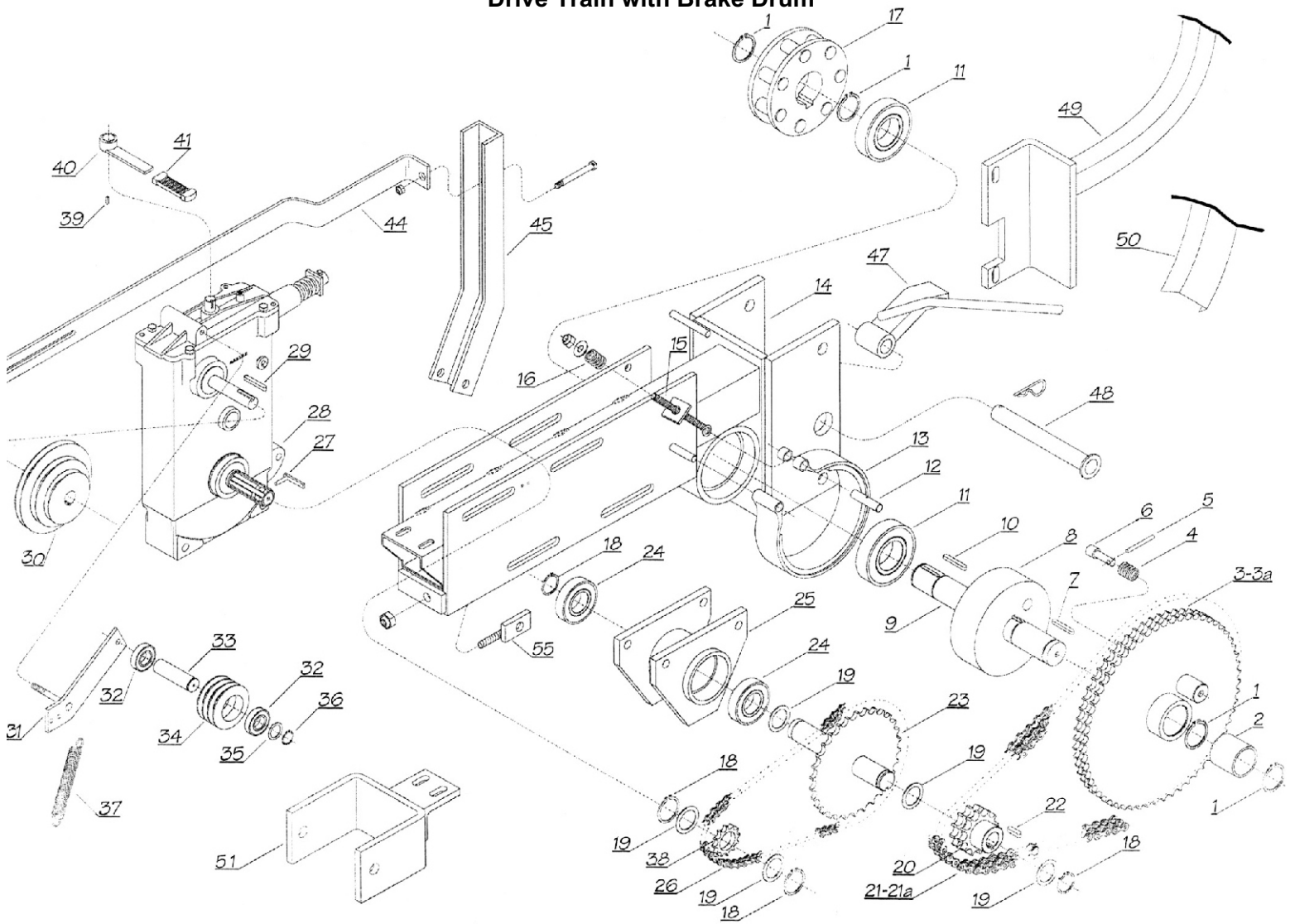
No.	Part Number	Description	Qty.
1	02206080	SNAP RING E-55	4
2	02216350	Bushing, Bronze 55mm x 65mm x 60mm	1
3	02208130	SPROCKET, Z60 3/4 DOUBLE	1
3a	02216360	SPROCKET, Z70 3/4"	1
4	02216310	SPRING DIA. 1,6	1
5	02203480	PIN	1
6	02203490	PIN	1
7	02216370	KEY 16X20X10	1
8	02207610	HUB, BRAKE 55MM BORE - FG1/MG1	1
9	02210400	SHAFT, 55MM FG1	1
10	02216300	KEY 16MM X 50MM	1
11	02205010	BEARING,6211-2RS	2
12	02216380	PIN 9X40	1
13	02207620	BRAKE BAND - FF1/MF1/FG1/MG1/MG2	1
14	02216390	DRIVE TRAIN SUPPORT	1
15		Brake Rod	1
16	02216400	SPRING C98	1

Drive Train with Brake Drum



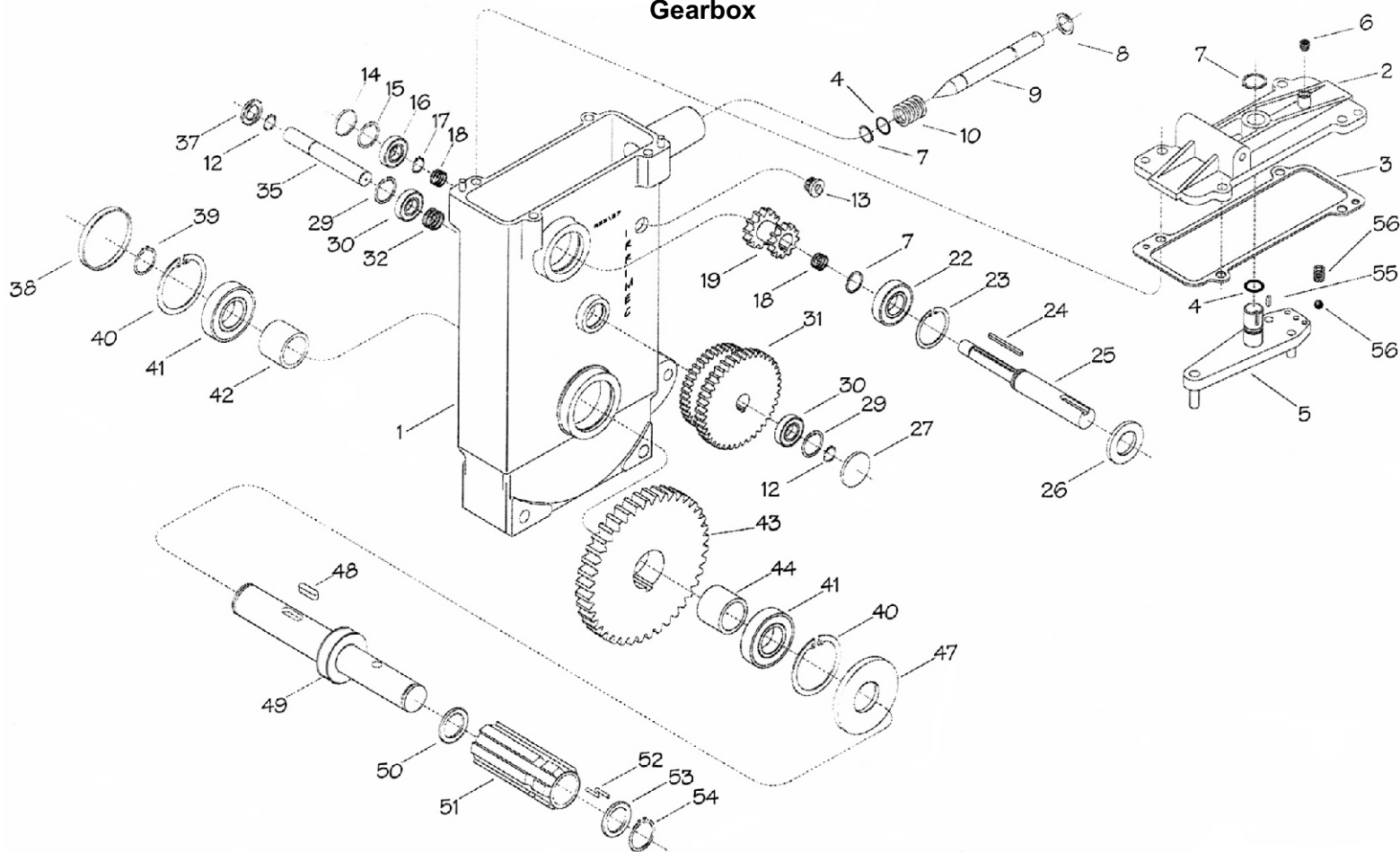
17	02206070	PINION Z7 PIN DIA 26MM		1
18	02205340	SNAP RING E35		3
20	02205110	SPROCKET 3/4"Z13 002945		1
21	87548473	CHAIN 3/4-2DW RLLR PER FT	ft.	4.8ft.
21a	87548473	CHAIN 3/4-2DW RLLR PER FT	ft.	5.2 ft.
22	02205510	KEY 6 X 50		1
23	02270420	SHAFT & SPROCKET, Z40 X 5/8 35 dia.		1
24	02203530	BEARING,6207-2RS		2
25	02205030	BEARING, SUPPORT		1
26	02001141	CHAIN 5/8 METRIC ROLLER PER FT.	ft.	3.3ft.
27	02201910	SAFETY KEY & THREADED PIN		1
28	02208000	GEARBOX,2 SPEED 27/53		1
29	02205510	KEY 6 X 50		1
30	02213980	PLLY,3 STEP 100M,125M,147		1
31	02216410	BELT TIGHTENER LEVER		1
32	02203440	BEARING,6005-2RS		2
33	02206530	SHAFT,BELT IDLER		1
34	02206540	PULLEY IDLER 3 GROOVE		1

Drive Train with Brake Drum



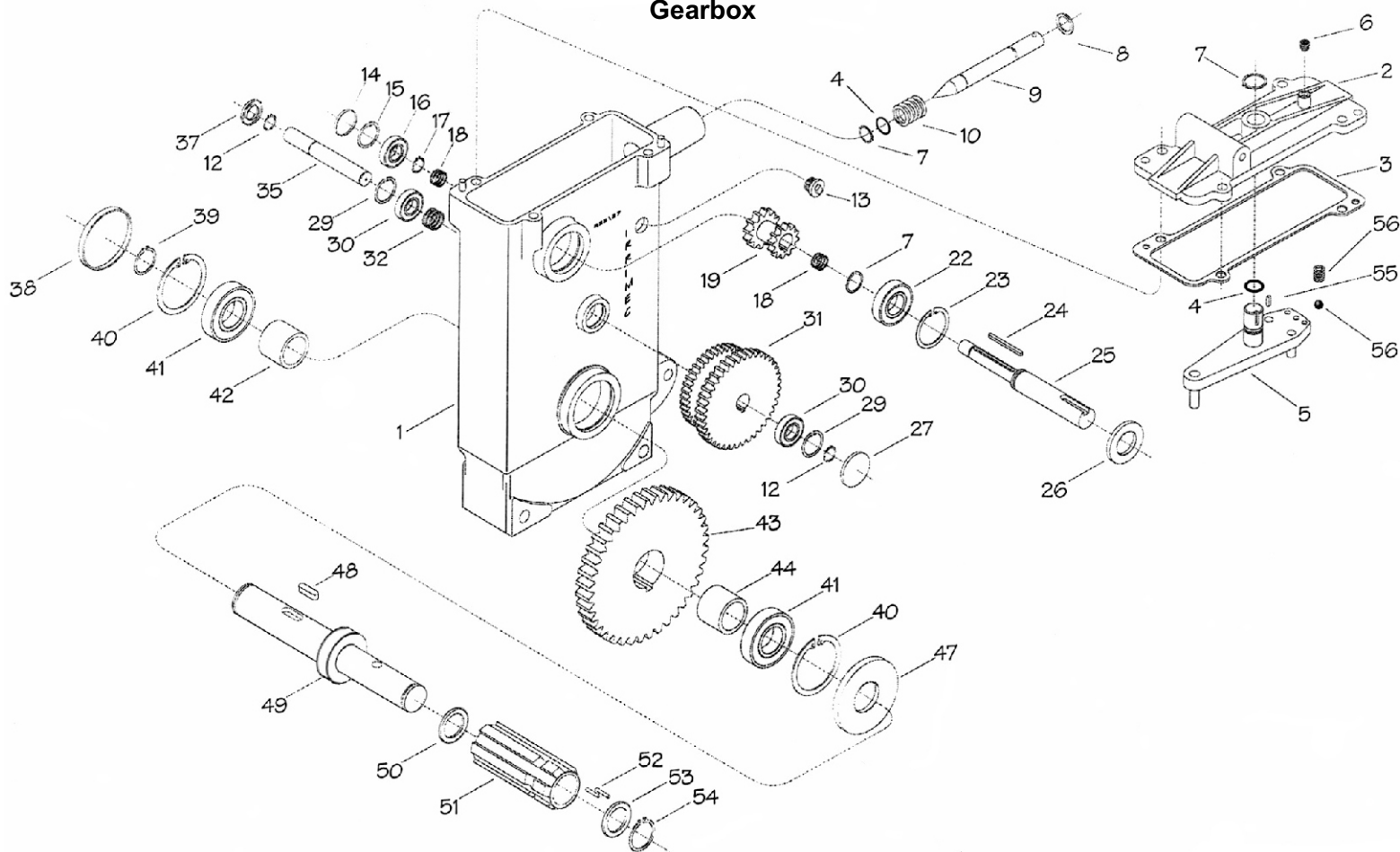
35	02207030	SPACER 1MM X 25MM X 35MM		1
36	02203420	SNAP RING E25		1
37	02203180	SPRING BELT TIGHTENER		1
38	02205140	SPROCKET 5/8"Z13 002445/B		1
39	02216430	KEY 6		1
40	02216420	GEARBOX SPEED LEVER		1
41	02204140	GRIP, TURBINE		1
42	02213730	SENSOR, CRUISE CONTROL		2
43		BRACKET SENSOR SUPPORT		1
44	02216440	STOP ROD		1
45	02216450	STOP LEVER		1
46		PINION SUPPORT SENSOR		1
47	02205210	PAWL, NON RETURN FG1 & FF1		1
48	02205200	PIN, ANTI REVERSE		1
49	02216340	SHIELD MT.		1
50	02215530	GUARD, SPOOL GEAR - MG1/2		1
51	02216330	END SUPPORT		1

Gearbox



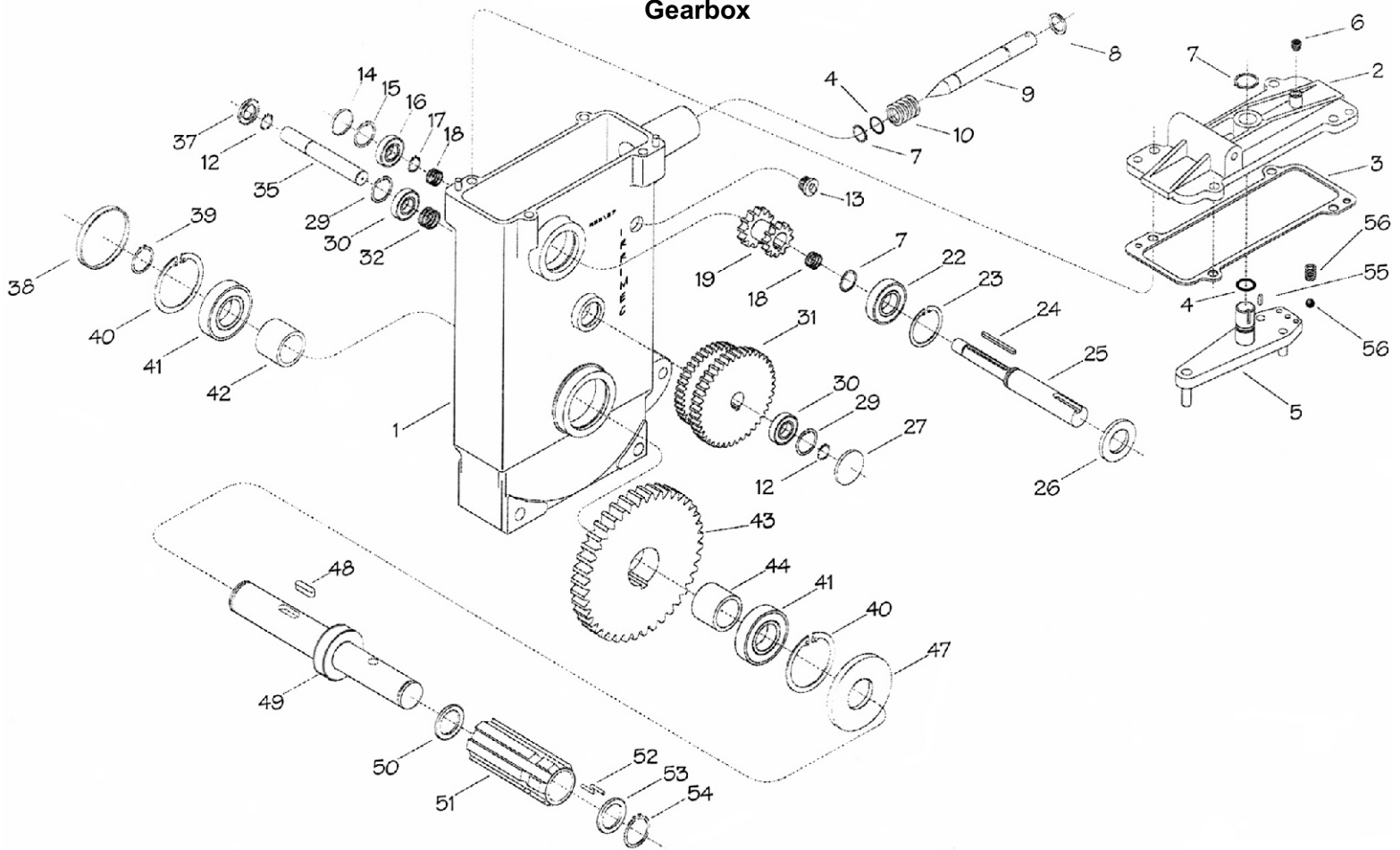
No.	Part Number	Description	Qty.
1	022-0765-0	Gearbox Body	1
2	022-0766-0	Gearbox Cover	1
3	022-0767-0	Gasket	1
4	022-0559-0	O-Ring 20.78mm OD x 2.62mm Cross Section	2
5	022-0768-0	Clutch Rod	1
6	022-0769-0	Breather	1
7	022-0168-0	Snap Ring E20	3
8		Washer	1
9	022-0770-0	Clutch Pin	1
10	022-0771-0	Spring f.2,5 L.34 dia. 29,5	1
12	022-0131-0	Snap Ring E15	2
13		Plug 3/4"	1
14	022-0171-0	Plug 32 x 7	1
15	022-0170-0	Snap Ring i32	1
16	022-0169-0	Bearing 6201	1
17	022-0174-0	Snap Ring E12	1
18	022-0772-0	Shim	
19	022-0773-0	Clutch Pinion Z28 M1,5-Z16 M1,5	1
22	022-0167-0	Bearing 5204 2RS	1
23	022-0166-0	Snap Ring i47	1
24	022-0774-0	Key 4x	1

Gearbox

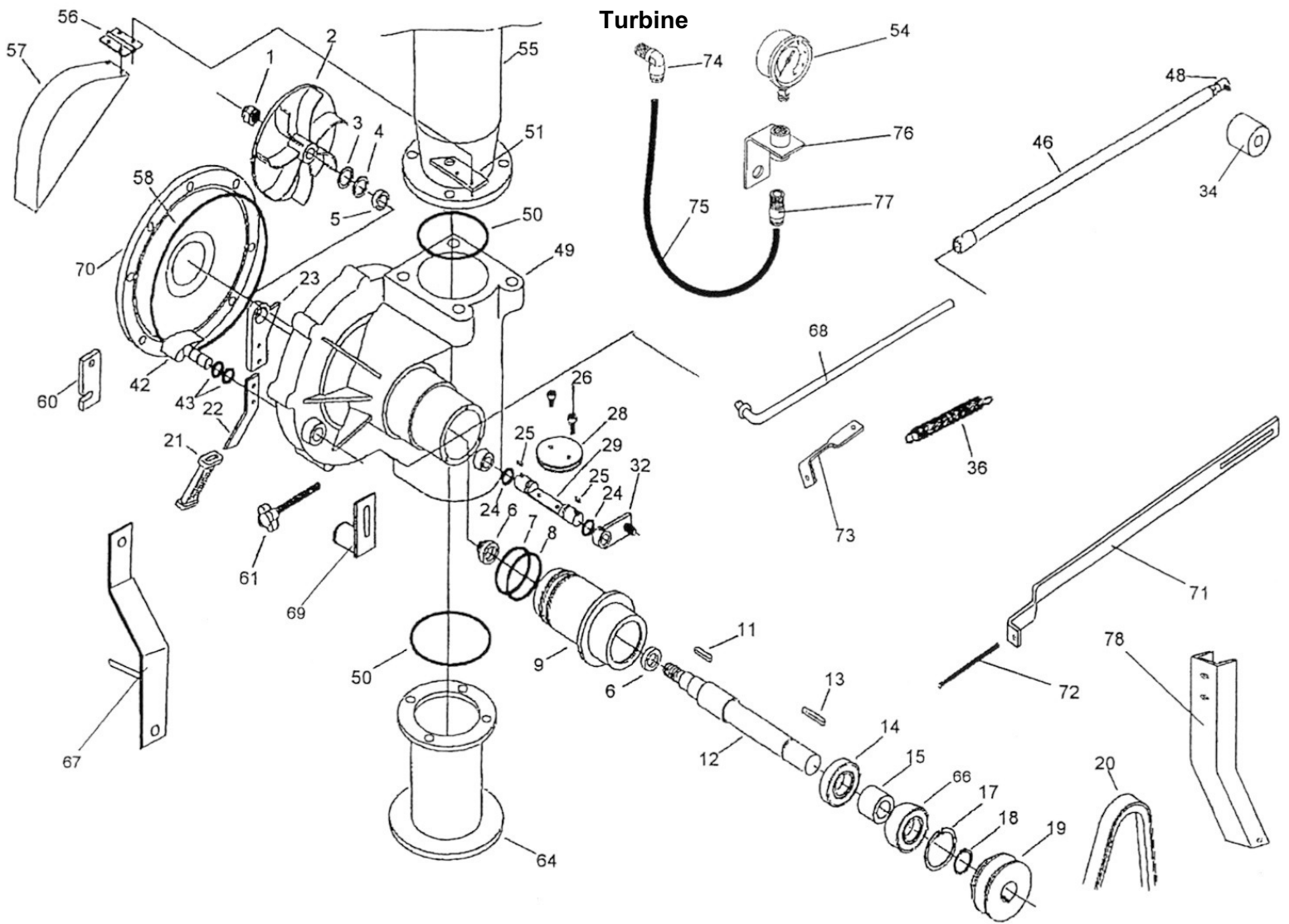


25	022-0775-0	Inlet Shaft	1
26	022-0165-0	Seal, 20mm x 47mm x 7mm	1
27	022-0776-0	Plug 35 x 8	1
29	022-0777-0	Snap Ring i35	2
30	022-0778-0	Bearing 6202	2
31	022-0779-0	Pinion Z118 M1,5-Z106 M1,5-Z13 M2	1
32	022-0780-0	Shim	
35	022-0781-0	Middle Shaft	1
37	022-0782-0	Oil Seal 35mm x 15mm x 7mm	1
38	022-0624-0	Plug 62 x 10	1
39	022-0187-0	Snap Ring E30	1
40	022-0181-0	Snap Ring i62	2
41	022-0182-0	Bearing 6206 (no seals)	2
42	022-0784-0	Spacer	
43	022-0785-0	Pinion Z94 M2	1
44	022-0786-0	Spacer	
47	022-0180-0	Oil Retainer 62 x 35 x 7	1
48	022-0788-0	Key 8 x 7 x 25	1
49	022-0790-0	Shaft	1
50	022-0194-0	Spacer 22 x 3	1
51	022-0195-0	Pin, Splined	1
52	022-0193-0	Pin, bearing 2 x 17.8	62
53	022-0190-0	Spacer Dia 18 x 2.8	1

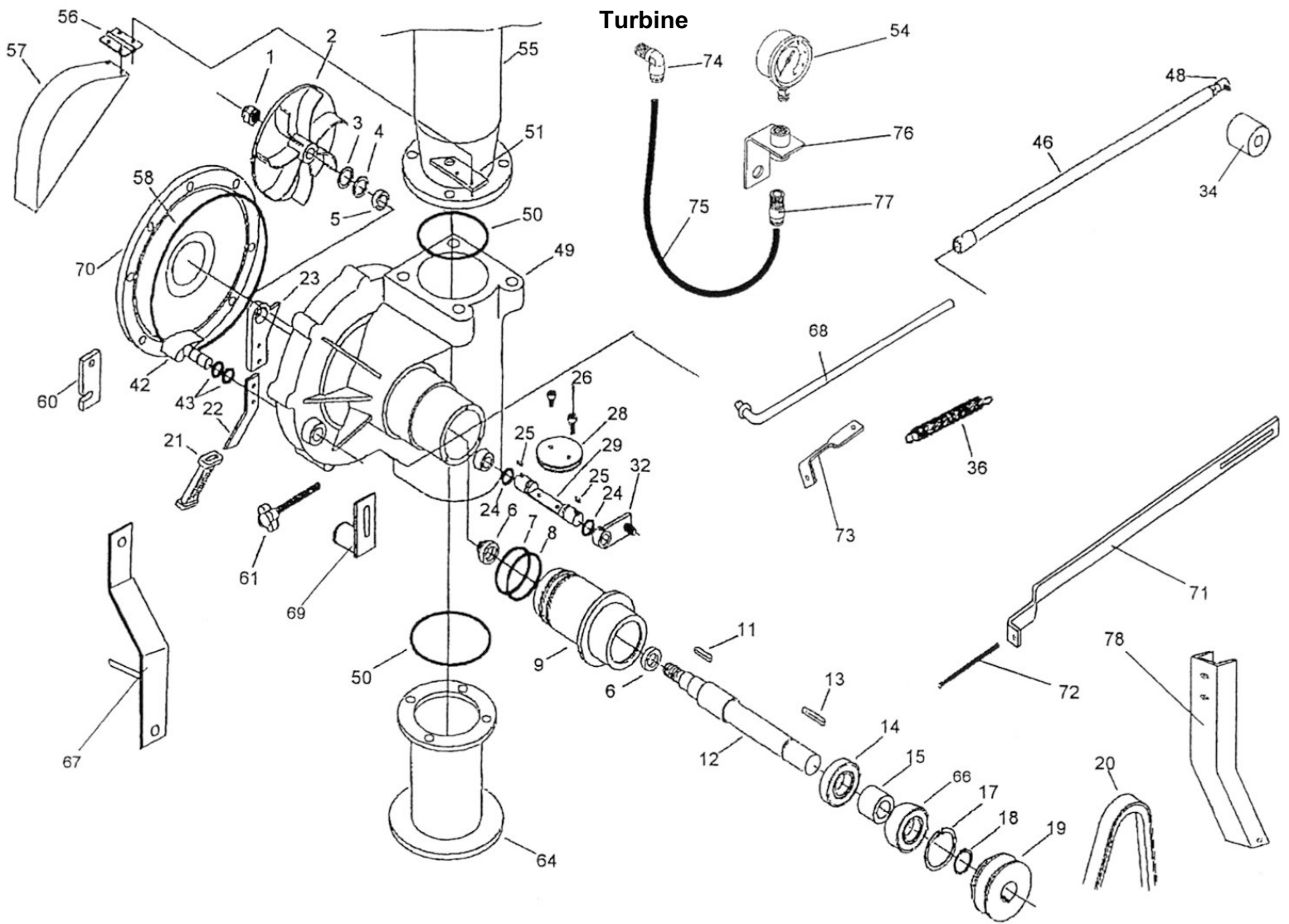
Gearbox



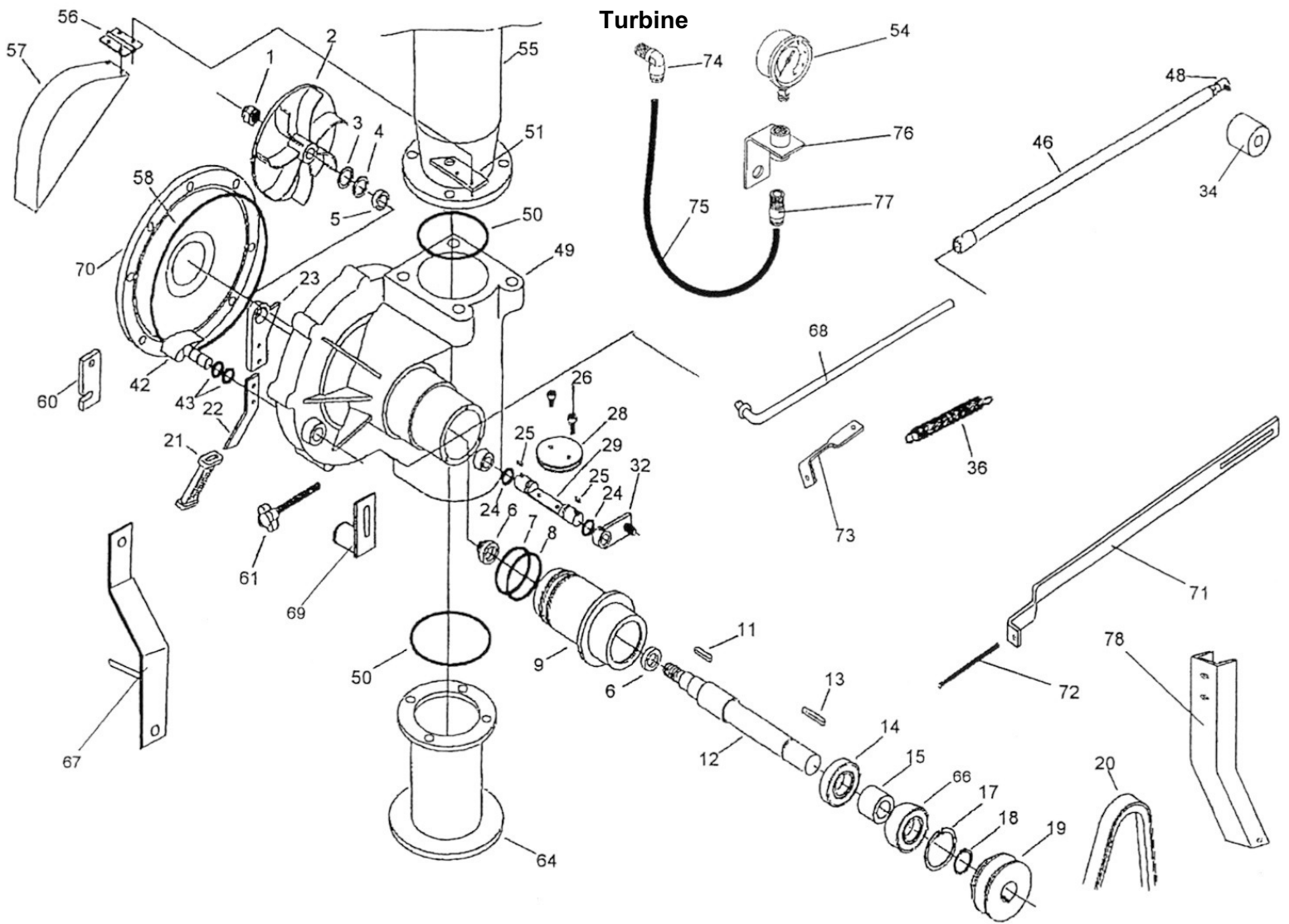
54	022-0189-0	Ring, Stop	1
55	022-0549-0	Key 6 x 6 x 25	1
56	022-0791-0	Ball	1
	022-1026-1	Shaft Assm. R53/27 Complete	1
	500-0470-0	Shut Off Cable Kit (Not Shown-Turbine Drives Only)	1



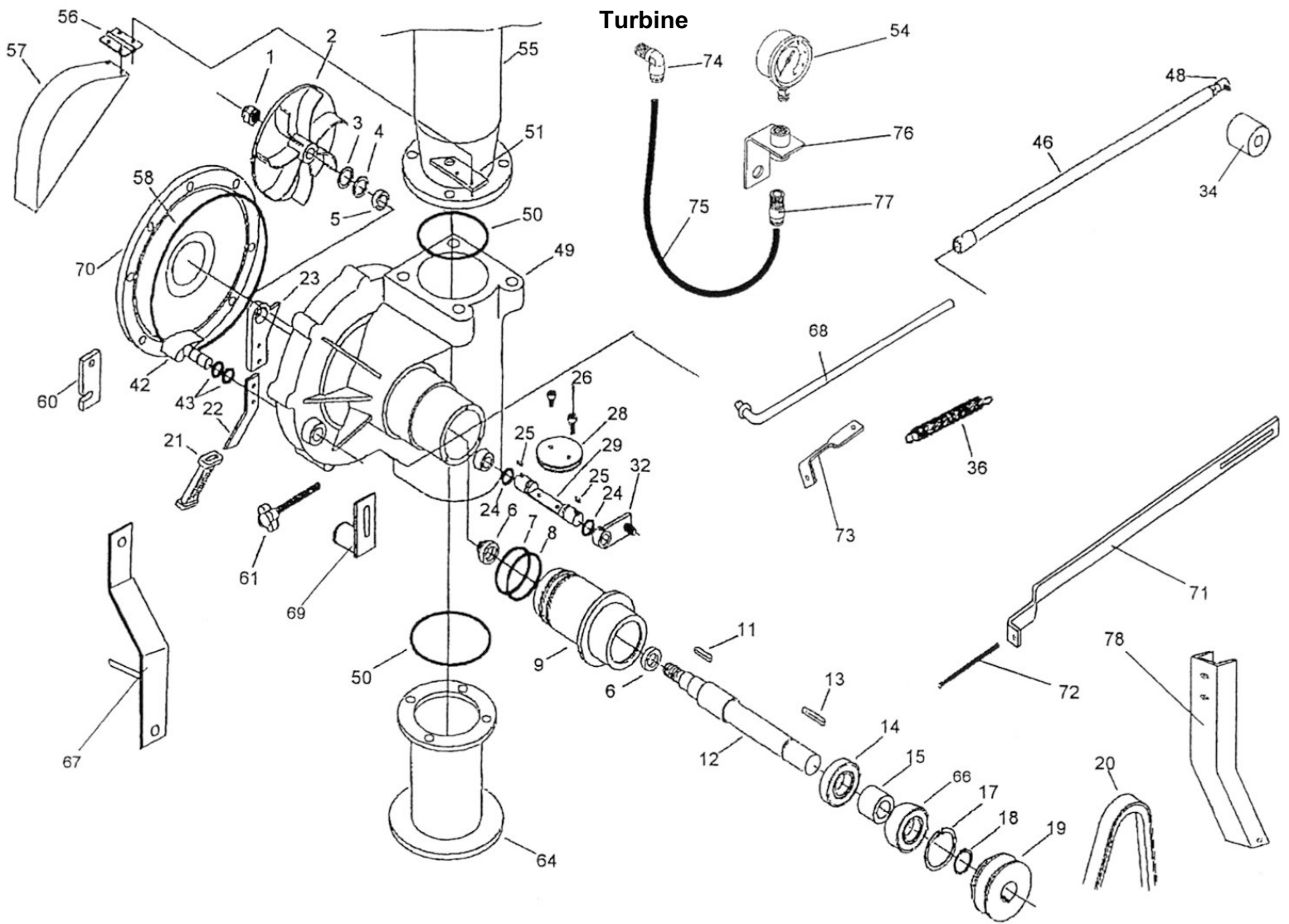
No.	Part Number	Description	Qty.
1	022-0198-0	Nut, Self Locking Thin 14 x 1.5mm	1
2	022-0199-3	Impeller 6.77 OD x .87 Vane Height	1
3	022-0543-0	Spacer Mylar, .039" Thick	2
4	022-0300-2	Spacer, 15mm (.6"Long)	1
5	022-0544-0	Spacer, .984"OD x .787"ID x .197"Thick	1
6	022-0545-0	Seal 20 x 6	1
7	022-0546-0	O-Ring 2.30" ID x .103"C/S	1
8	022-0546-1	O-Ring 2.362" ID x .103"C/S	1
9	022-0548-0	Turbine Housing T200	1
11	022-0337-0	Key, 5mm x 5mm x 10mm Long	1
12	022-0550-0	Impeller Shaft	1
13	022-0551-0	Key 6 x 50	1
14	022-0167-0	Bearing, 6204 2RS	1
15	022-0552-1	Spacer, 1.8" Long	1
17	022-0324-0	Retaining Ring i47	1
18	022-0323-0	Retaining Ring E20	1
19	022-0592-0	Pulley Three Step	1



20	022-1348-0	Belt A66		1
21	022-0566-0	Hand Grip		1
22	022-0557-0	Plate By-Pass Lever		1
23	022-0558-0	Lever		1
24	022-0559-0	O-Ring 120 15,54 x 2.62		2
25	022-0319-0	Key, 6mm x 6mm x 10mm Long		2
26	022-0305-0	Screw, 6 x 16 Inox		2
28	022-0562-0	Disc, By-Pass		1
29	022-0563-2	By-Pass Shaft		1
31	596-0041-0	Gauge Protector		1
32	022-0564-0	By-Pass Lever		1
34	022-0660-0	Spacer 1" OD x 2.4" Long x 8mm Threads		1
36	022-0318-0	Spring		1
42	022-0566-0	Regulator Flap with Pin		1
43	022-0331-0	O-ring		2
46	022-0569-1	By-Pass rod		1
48	022-0341-0	Rod End		1
49	022-0302-1	Turbine Body		1
50	022-0484-0	O-Ring		2

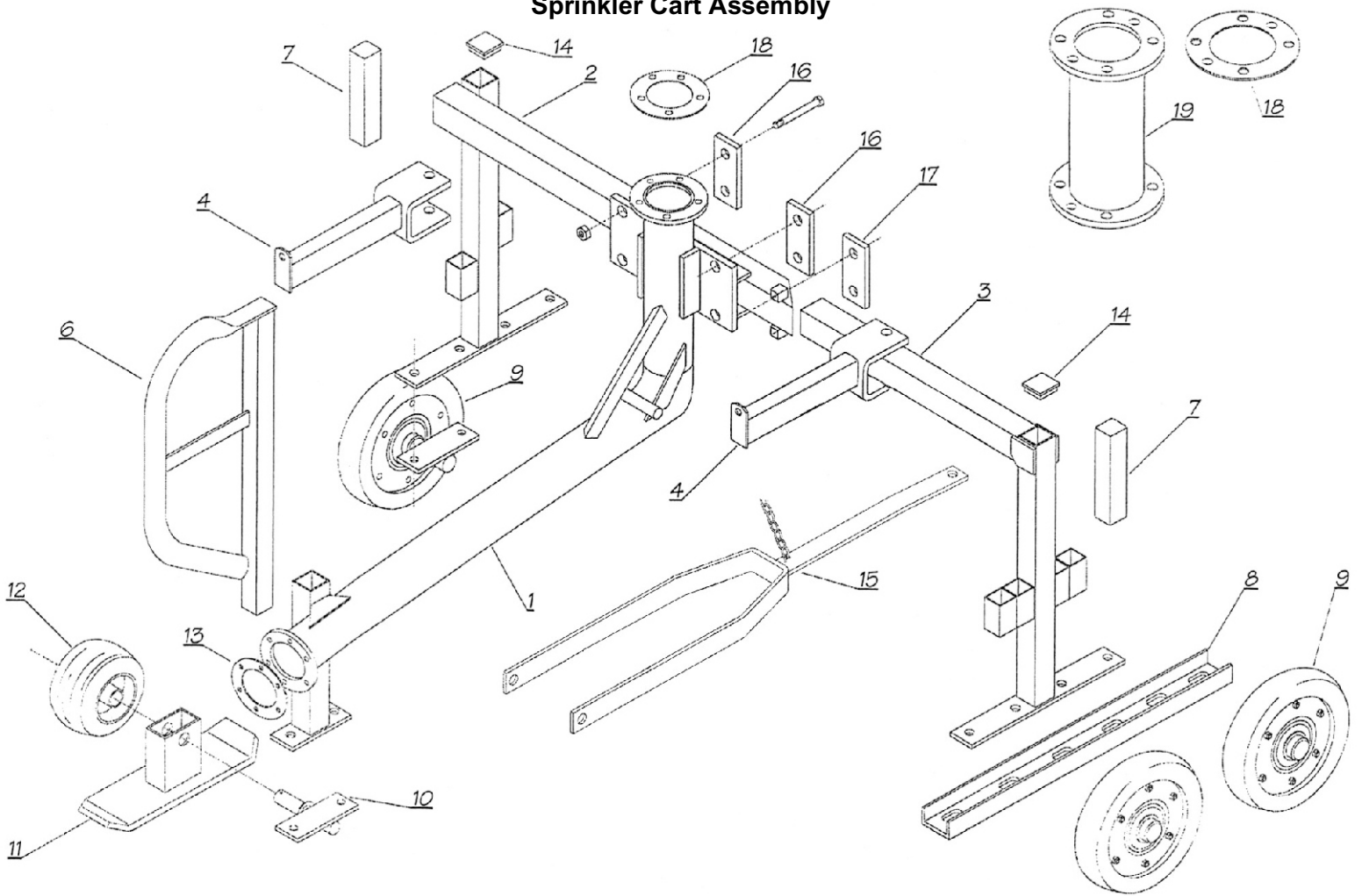


51	022-0571-0	Support		1
54	586-0675-0	Gauge 0-300		1
55	022-1304-0	Upper Elbow		1
56	022-0389-0	Hinge		1
57	022-0388-0	Shield, Belt		1
58	022-0572-0	O-Ring i286 x 3.53		1
60	022-0573-0	Stop Plate		1
61	022-0391-0	Knob		1
64a	022-0483-0	Lower Feeding Elbow 4"		
64b	022-0483-1	Lower Feeding Elbow 5"		1
65	990-7030-0	Overhaul it Runner Shaft. 25/120(Not Shown)		1
66	022-0167-1	Bearing, 5204 2RS		1
67	022-0648-0	Arm, Comp		1
68	022-0649-0	Link, Comp		1
69	022-0650-0	Loop, Comp		1
70	022-0834-0	COVER,IMPELLER		1
71	022-0794-0	Bar, Shut Off		1
72	022-0795-0	Stud, All Thread		1
73	022-0796-0	Bracket, Spring		1



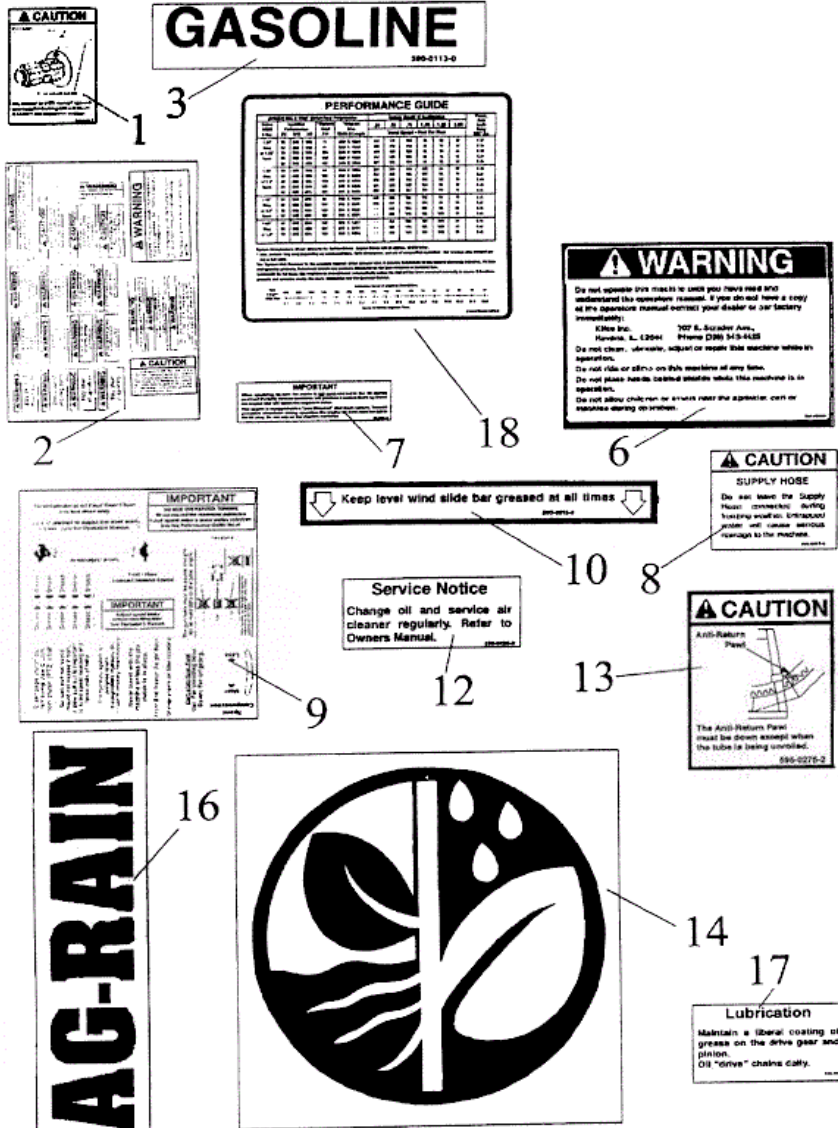
74	525-4915-2	Ftg, TB 90 Deg. 1/4"MNPT x 5/16" Tube		1
75	252-4939-2	Tube, Synflex 5/16"	Ft.	2
76	599-0148-0	Gauge Mount		1
77	525-4915-4	Ftg, TB Straight 1/4" MNPT x 5/16" Tube		1
78	022-0797-0	Arm Clutch Disengage		1

Sprinkler Cart Assembly



No.	Part Number	Description	Qty.
1	022-1299-0	Main Frame	1
2	022-0986-0	Small Leg	1
3	022-0987-0	Length Leg	1
4	022-1300-0	Stirrup Trolley Coupler	2
5	022-0996-0	Draw Bar, MF1	1
6	022-1301-0	Stop Bar Support	1
7	022-0715-0	Ballast	4
8	022-1302-0	U-Bolt	2
9	022-0990-0	Wheel	2
10	022-0991-0	Slide Support	1
11	022-0992-0	Slide	1
12	022-0993-0	Center Wheel	1
13	020-9920-2	Gasket	1
14	022-0995-0	Plug 70 x 70	2
15	022-1496-0	Draw Bar	1
16	022-1303-0	Big Plate	2
17	022-1304-0	Small Plate	1
18	020-0018-5	Gasket	1
19	599-0182-0	Adapter	1

Decals



No.	Part Number	Description	Qty.
1	595-0275-1	Decal, PTO Rewind	1
2	594-0565-1	Decal, Warning	1
3	590-0113-0	Decal, Gasoline	1
6	597-0124-0	Decal, Warning	1
7	595-0501-0	Decal, Important Choke Full Open	1
8	596-0017-0	Decal, Supply Hose	1
9	594-0565-0	Decal, Instruction	1
10	590-0013-0	Decal, Levelwind Lubrication	1
12	596-0426-0	Decal, Change Oil	1
13	595-0275-2	Decal, Anti-Return Pawl	1
14	585-0299-3	Decal, Round Logo 10"	6
16	585-0404-2	Decal, Ag-Rain 3" Letters	3
17	596-0428-0	Decal, Lubrication	1
18	599-0373-0	Decal, Performance Guide	1
	596-0309-0	Decal, Caution Brake Adjustment (Not Shown)	1
	599-0361-7	Decal, A50 Turbine (Not Shown)	1
	597-0055-0	Decal, Warning Read Operator Manual (Not Shown)	1