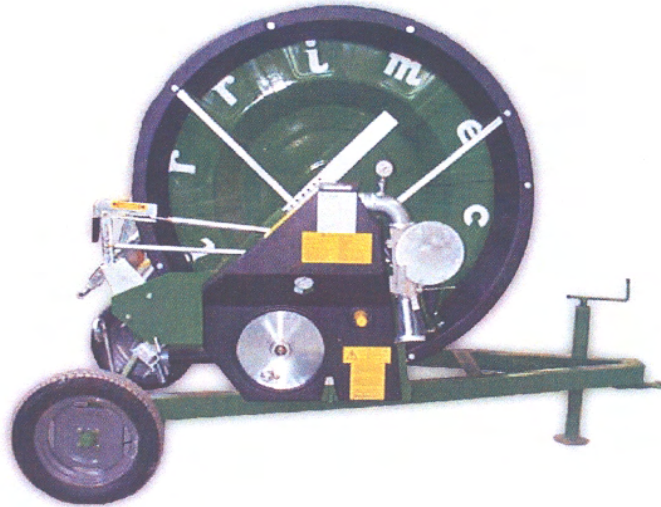


Kifco®



Water-Reel® Irrigation

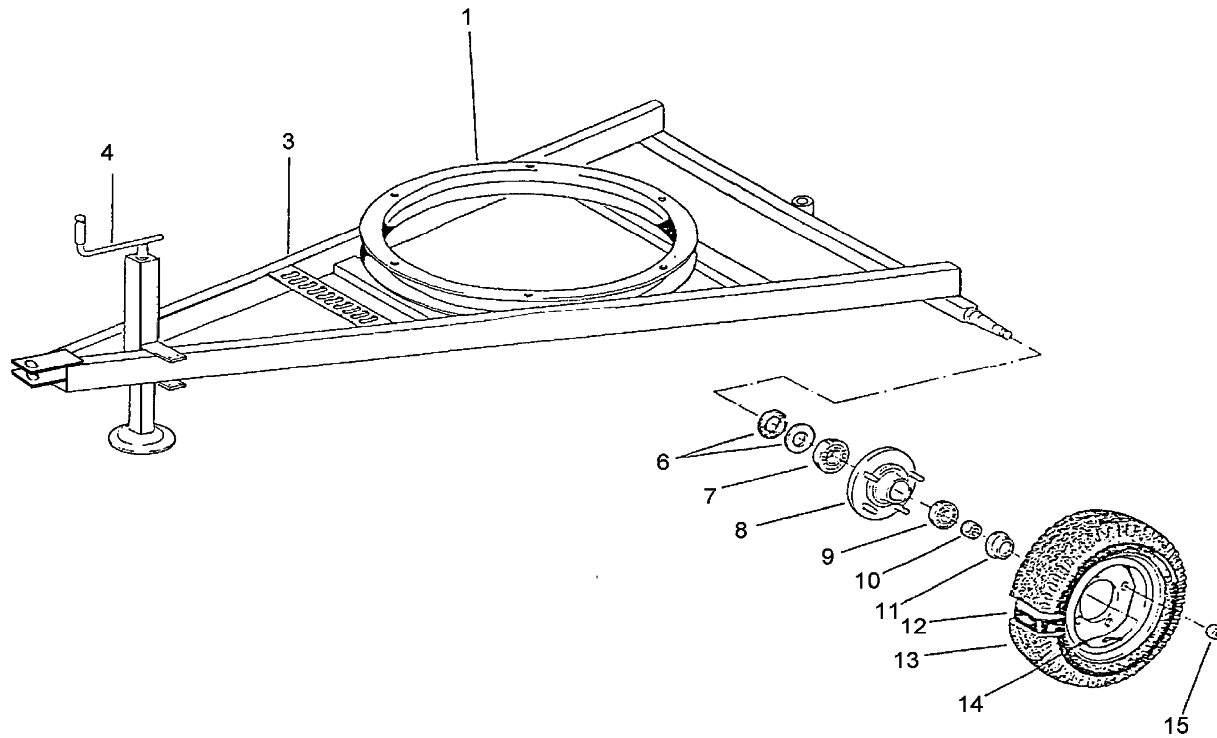
PARTS MANUAL

T21A 300000+

Jan. 2004

Note Some Parts Are Not Available

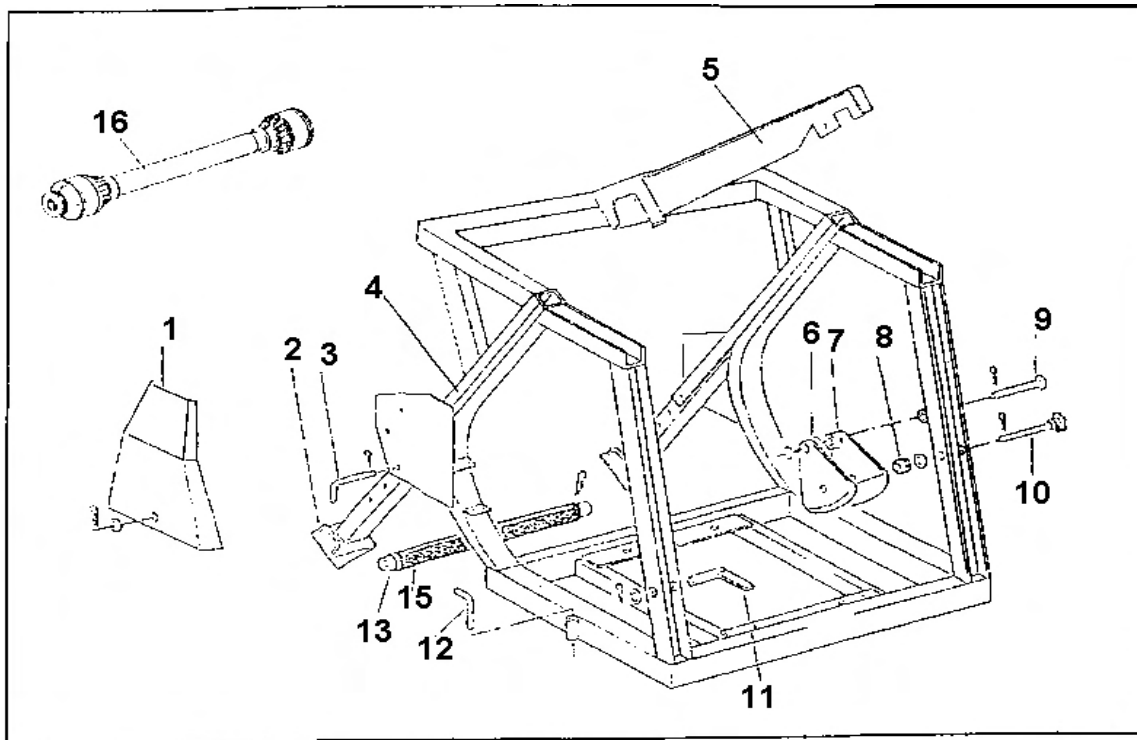
RUNNING GEAR ASSEMBLY



Running Gear Assembly Description

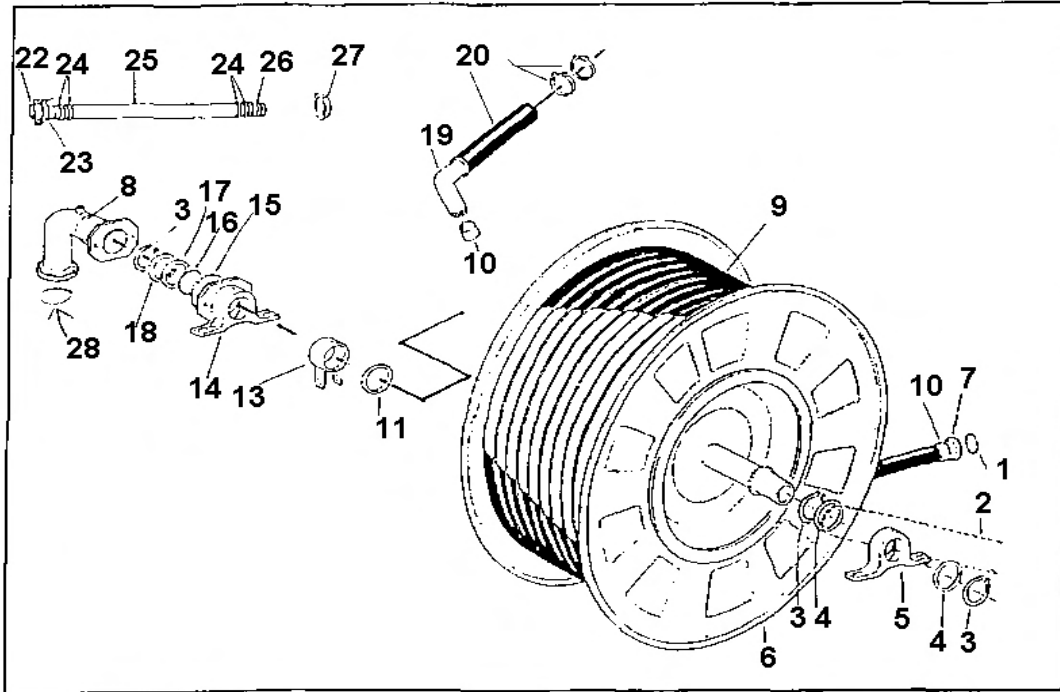
Item	Part Number	Description	Qty.
1	02010201	BEARING, TURNTABLE	1
3		FRAME	1
4	02010171	JACK T21A	1
6		DUST GUARD	2
7	02203900	BEARING, TAPERED ROLLER 30204	2
8	02203911	HUB, WHEEL - AA	2
9	02203920	BEARING, TAPERED ROLLER 30205	2
10	02203940	NUT, SPINDLE 18MMX1.5	2
11	02203950	DUST CAP	2
12	02210380	WHEEL TIRE ASSY R14-165	2
15	02203980	NUT, LUG	8

CRADLE PAGE



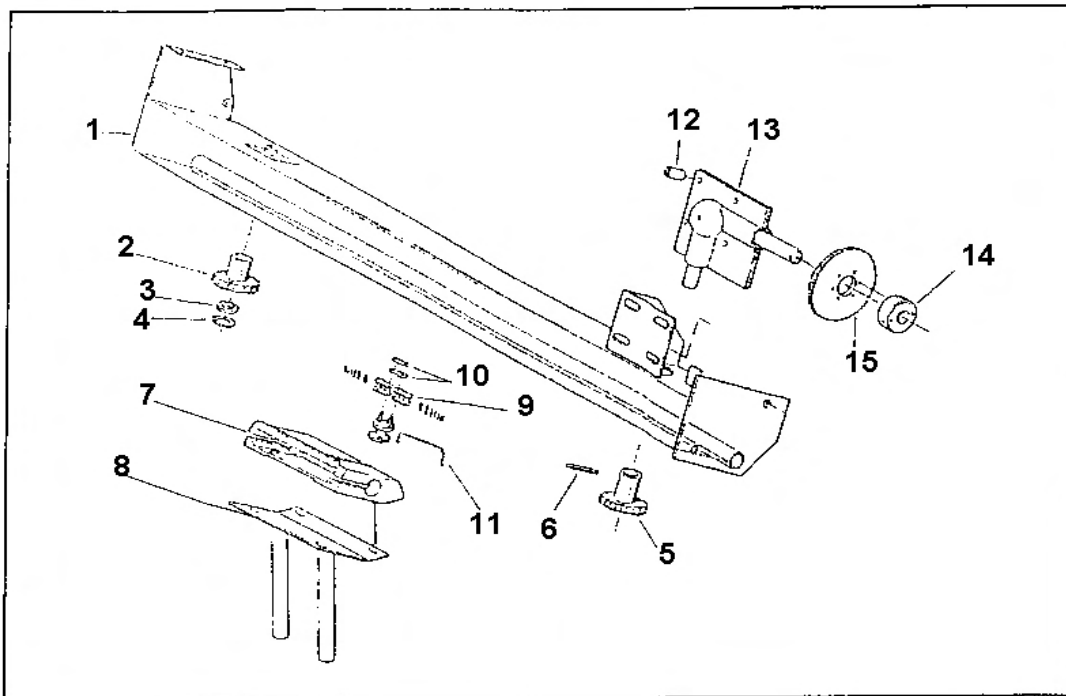
Item	Part Number	Cradle Description	Qty.
1	02203991	SHIELD,SIDE AA BASE	1
2a	02010178	LEG,STABILIZER RIGHT	1
2b	02010174	LEG,STABILIZER LEFT	1
3	02204030	PIN,BRAKE AA	1
4		Cradle	1
5	02204060	SHIELD AA	1
6	02204000	BRAKE,PLATE W/THREAD HOLE	1
7	02204010	BRAKE,PLATE W/PLAIN HOLE	1
8	02204020	SPRING WASHER	4
9	02204030	PIN,BRAKE AA	1
10	02207930	CONTROL BRAKE SCREW	1
11	02204040	PAWL,NON RETURN AA	1
12	02010177	PIN	1
13	02010202	ROLLER,HORIZONTAL 63TG200	1
15	02010203	ROLLER COVER	1
16a	30036044	SHAFT,PTO60"OAL#1 BUSH	1
16b	58803110	TUBE PTO MT	2
16c	55049181	BOLT,3/4 X 3 HEAVY HEX	2

SPOOL PAGE



Item	Part Number	Spool Description	Qty.
1	58800223	SEAL RING 3" 4.5 X 3.5 X 1/2	3
2	02001140	CHAIN 1/2 METRIC ROLLER	ft. 8.1
3	02001031	RING,RET EX .53MM ID2MM	3
4	02010032	SPACER, SPOOL AXLE - AA	2
5	02001033	BEARING,CI 60MM ID	1
6		Spool	1
9	02001074	TUBE END, 3"LEVERLOCK 63MM	1
10	58401790	TUBE,PE 63MM X 2.1 ID X 660F	2
11	02204080	SPACER, SPOOL AXLE - AA	1
13	02204100	SPACER, SPOOL AXLE (ARM) - AA	1
14	02001045	BEARING,CI 60MM	1
15	02001046	O-RING 3-7/8 X3-1/2 X3/16	1
16	02001047	O-RING 2-3/4 X2-3/8 X3/16	1
17	02001048	RING,ANTI FRICTION	1
18	02001067	SPACER	1
19	02001041	ELBW,PE TUBE 63MM	1
20	02001068	HOSE,ELBW-AA 13.5" LONG	1
21	03019178	SUPRA CLAMP 63MM-68MM	4
22	58802560	HOSE END, 3" BALL TO 3" HOSE	1
23	58800221	LEVER RING 3" 451 76MM	1
24	03019207	SUPRA CLAMP 79MM-85MM	4
25	25249622	HOSE, IRR SUPPLY REMNANT 3"(PERFT)	FT. 30
26	58802662	HOSE END INLET 3" TO 4"	1
27	40049270	BAND,RING LOCK 4 IN	1
28	58800223	SEAL RING 3" 4.5 X 3.5 X 1/2	1

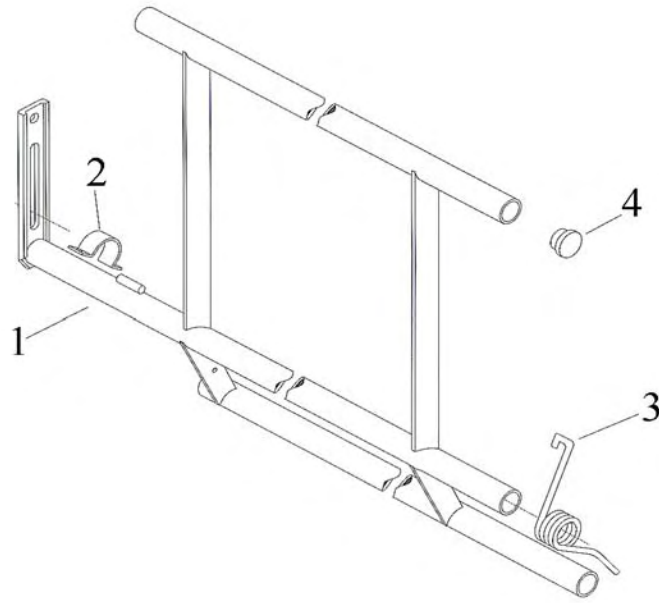
LEVELWIND MECHANISM



LEVELWIND MECHANISM

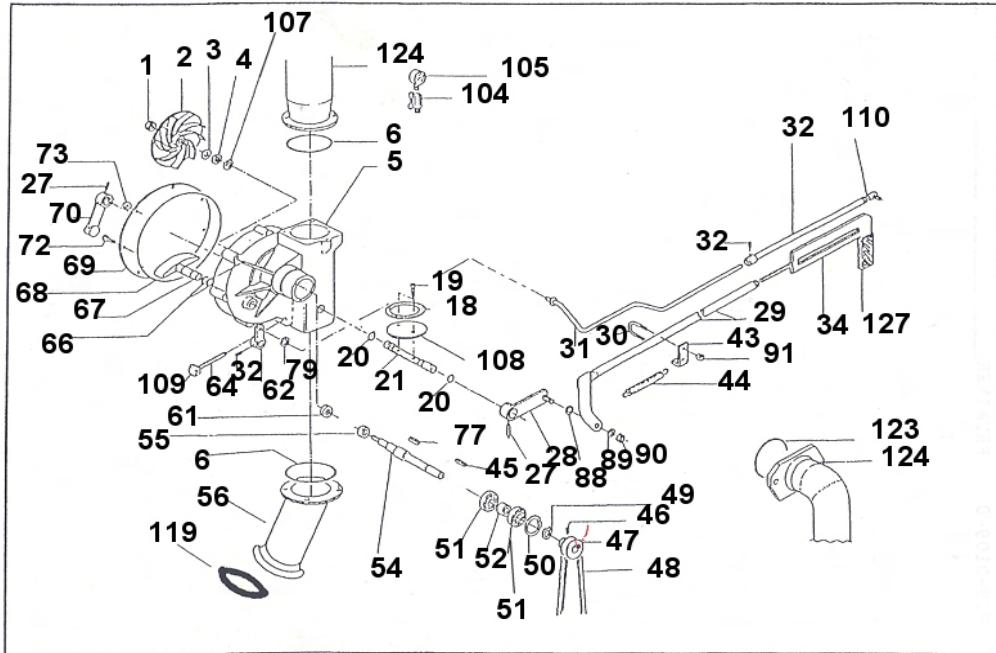
Item	Part Number	Description	Qty.
1	02001077	FRAME,LEVELWIND	1
2	02000475	SPRKT,LVLWND IDLER 13T A1	1
3	02001078	SPACER	4
4	52662540	RING,RET EX	1
5	02000479	SPRKT,LVLWND DRIVER 13T 5/8"	1
6	58902140	PIN,SPRING 7MM X 45MM	1
7	02001080	SUPPORT, FORK - AA	1
8	02000630	FORK, 63MM - AA	1
9	02001141	CHAIN 5/8 METRIC ROLLER PER FT. (114 Rollers)	6 ft.
10	02000496	LINK, HOSE GUIDE, ROUND END	1
11	02000776	CLIP,RETAINING	1
12	02001084	SPACER, GEARBOX - A-SERIES	1
13	02001085	GEARBOX,RIGHT ANGLE	1
14	02000153	HUB, SPROCKET	1
15	02000859	SPROCKET .5 X 35 TOOTH	1
16	02213620	LEVELWIND ASSM. FOR AA COMPLETE	1

HOSE RETENTION BAR



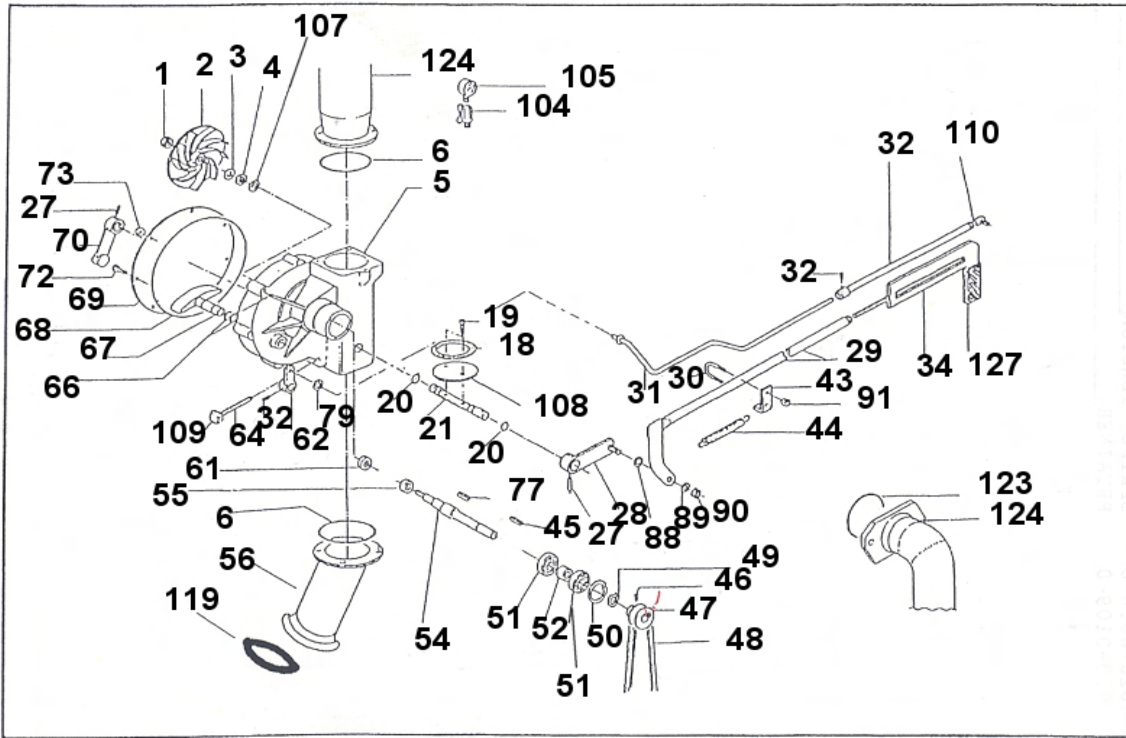
Item	Part Number	Description	Qty.
1	02204110	HOSE RETENTION BAR AA	1
2	02000164	RETAINER	1
4	02200166	SPRING, COIL - SHUT OFF	1

Turbine Assembly Page 1 of 2



Item	Part Number	Description	Qty.
1		Nut M8	1
2	02201991	IMPELLER 5.43 X .20VANE H	1
3	02203000	SPACER,25MM X 16MM X 7MM	1
4	02203010	SPACER DIA.25MM X 20MM X 1.5MM	1
5	02203020	BODY,TURBINE 10/50	1
6	02203030	O-RING,DIA. 71.54 X 3.53	1
18	02203040	GASKET,BY-PASS	1
19	02203050	SCREW,6-1MM X 16MM	2
20	02203060	O-RING DIA. 10.77 X 2.62	2
21	02203072	SHAFT,BYPASS W/GROOVES	1
28	02203100	LEVER,CONTROL BY-PASS	1
29	02203110	BYPASS ROD AA 36" END TO END	1
30	02203120	U-BOLT	1
31	02203130	ROD, INNER COMP. AA AND A1	1
32	02203200	SET SCREW 6-1.00 X 8MM LONG	1
33	02205690	ROD, OUTER CMPNSTR - AA/A1/D2 47.9"	1
34	02203161	TIE ROD W/10MM THREADS	1
43	02203170	PLATE,CLAMP	1
44	02203180	SPRING BELT TIGHTENER	1
45	02203190	KEY 6X10	1
46	02203200	SET SCREW 6-1.00 X 8MM LONG	1
47	02205980	PLY,78MM,57M,39MM,BORE20	1
48a	02204400	BELT,V 3MM X 6MM X 580MM	1
48b	02204401	BELT,V 3MM X 6MM X 714MM	1
49	02201680	RETAINING RING E20	1
50	02203240	STOP RING I47	1
51	02201670	BEARING,6204-2RS	1
52	02203250	SPACER, 25MM X 20MM X 10.2MM	1
54	02203260	IMPELLER PIN (Shaft)	1
55	02205450	SEAL,20 X 6	1
56	02204350	FITTING, ENTRY - 10/50 (AA)	1
61	02205450	SEAL,20 X 6	1
62	02203300	CONTROL LEVER	1
64	02204130	OPEN VANE IMPELLER NT 120	1

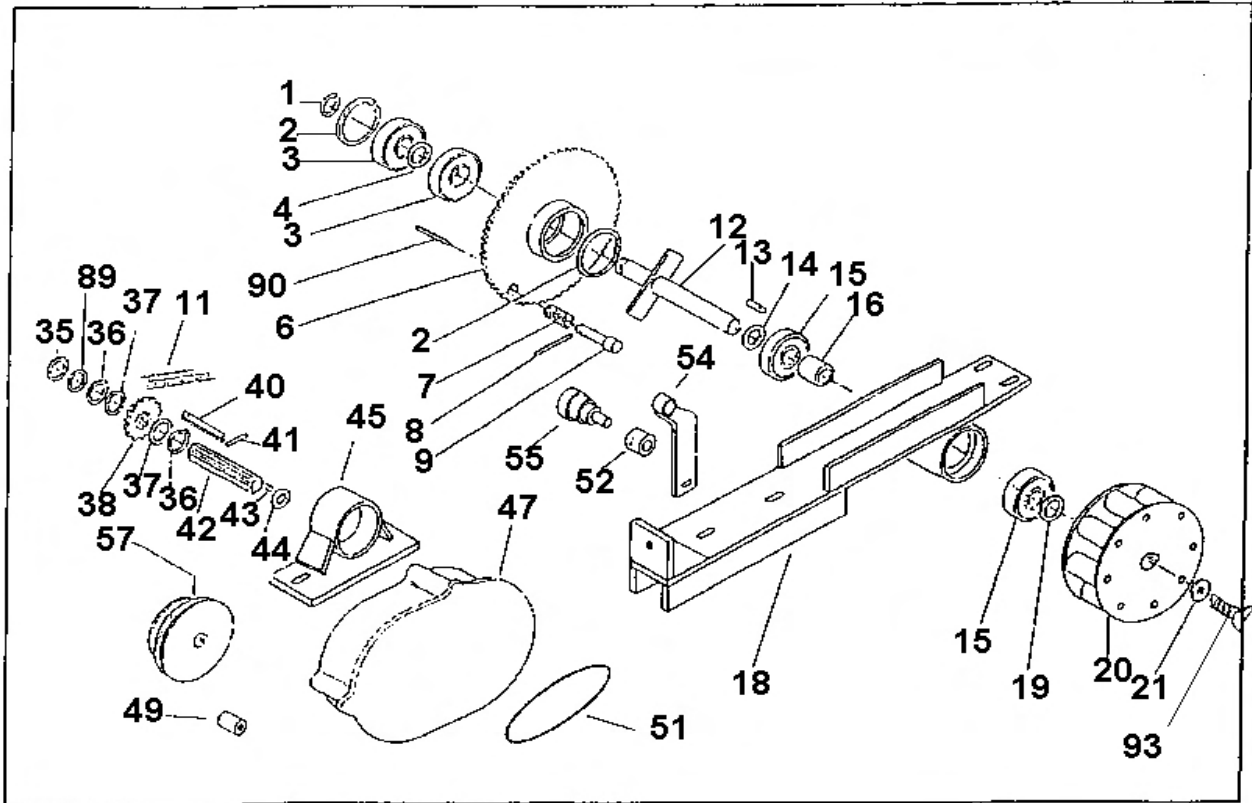
Turbine Assembly Page 2 of 2



Turbine Assembly Page 2 of 2

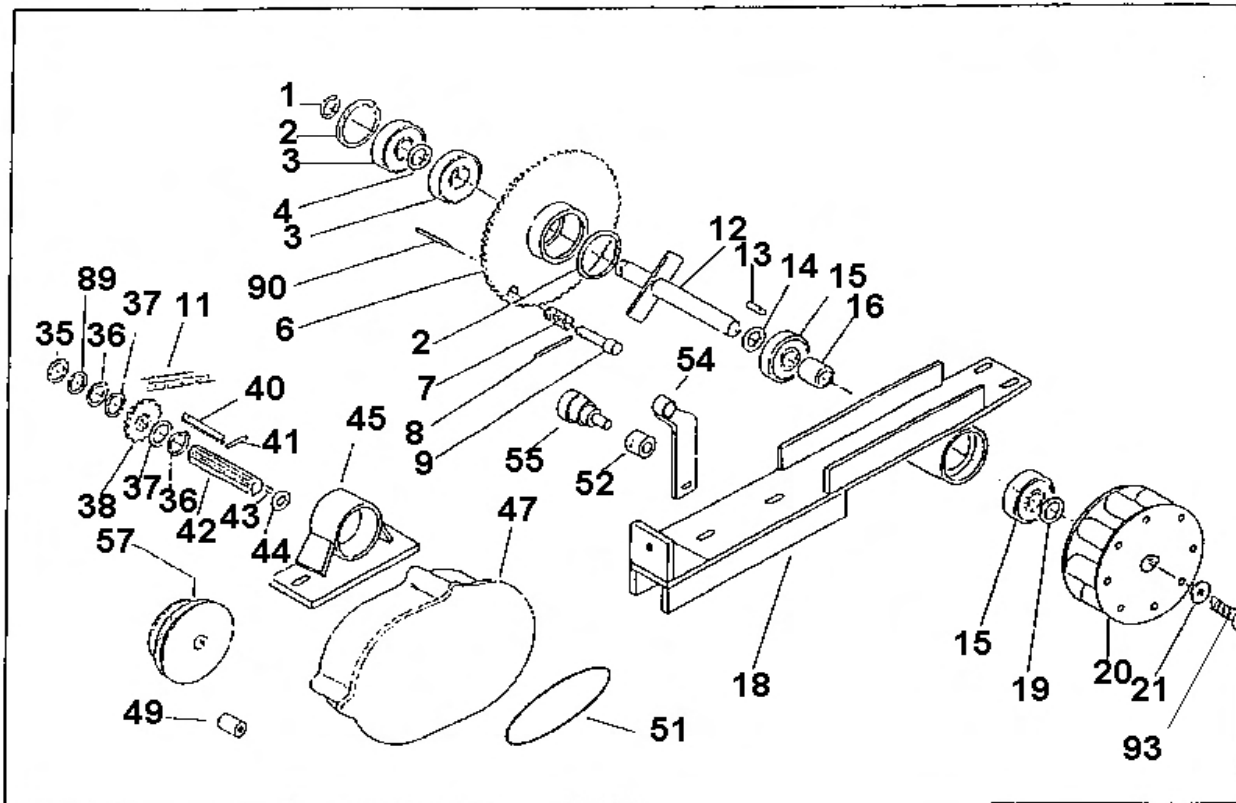
Item	Part Number	Description	Qty.
66	02203310	O-RING 8.73MM ID X 1.78MM CS	1
67	02203320	REGULATOR FLAP	1
68	02203330	O-RING DIA. 203 X 3.53	1
69	02203340	COVER, 10/50 TURBINE	1
70	02203350	LEVER LOCK HANDLE	1
72		Screw, N8 x 25	1
73		Nut, M8	1
77	02203370	KEY 5 X 10	3
104	02203380	not used	1
105	58606750	GAUGE, PRESS 0-300	1
107	02203390	SHIM,28MM OD 20MM ID X1MM	1
108	02203400	DISC. BY-PASS	1
109	02204130	OPEN VANE IMPELLER NT 120	1
110	02203410	ROD END	1
119	58800223	SEAL RING 3" 4.5 X 3.5 X 1/2	1
123	02204370	O-Ring	1
124	02204360	Upper Elbow	1
127	02204140	HAND GRIP MOD. 1040-20X6	1

DRIVE TRAIN PAGE 1 of 2



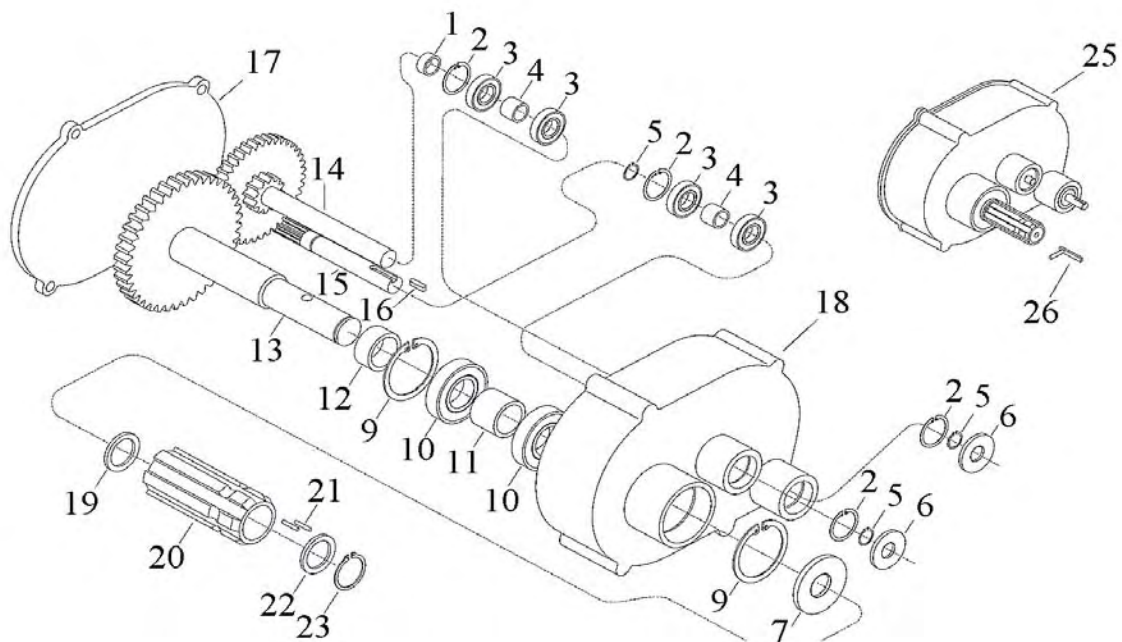
Item	Part Number	Description	Qty.
1	02203420	SNAP RING E25	1
2	02203430	SNAP RING I 47	2
3	02203440	BEARING,6005-2RS	2
4	02203450	SPACER DIA. 26	1
6	02203460	SPROCKET, 1/2" Z90	1
7	02203470	SPRING	1
8	02203480	PIN	1
9	02203490	PIN	1
11	02001140	CHAIN 1/2 METRIC ROLLER	ft.
12	02204150	SHAFT,DIA 25 (AA)	1
13	02204160	KEY 8MM X 7MM X 40MM	1
14	02204170	WASHER,26MM X 44MM	1
15	02203440	BEARING,6005-2RS	2
16	02204180	SPACER, 28MM X 34MM X 52MM LONG	1
18	02204190	SPACER,DIA. 25MM	1
19	02213990	SUPPORT, POWERTRAIN FRAME - AA	1
20	02204210	PINION, 25BORE 16PIN 115 OD Z7-AA	1
21	02203590	WASHER,SPECIAL	1
35	02201890	RING,STOP BASE A1 75MM E18	1
36	02203600	SNAP RING E35	1
37	02205350	SPACER, 35MM X 45MM X 1MM	2
38	02203621	SPROCKET, 1/2 15	1
40	02201910	SAFETY KEY & THREADED PIN (has both part in it.)	1
41	02201910	SAFETY KEY & THREADED PIN (has both part in it.)	1
42	02201950	PIN,SPLINED BASE A1 75MM	1
43	02201930	PIN,BEARING 2X17.5	62
44	02204260	Spacer, dia. 22 x 2.8 Bronzo	1
45	02204280	SUPPORT, GEARBOX - AA	1

DRIVE TRAIN PAGE 2 of 2



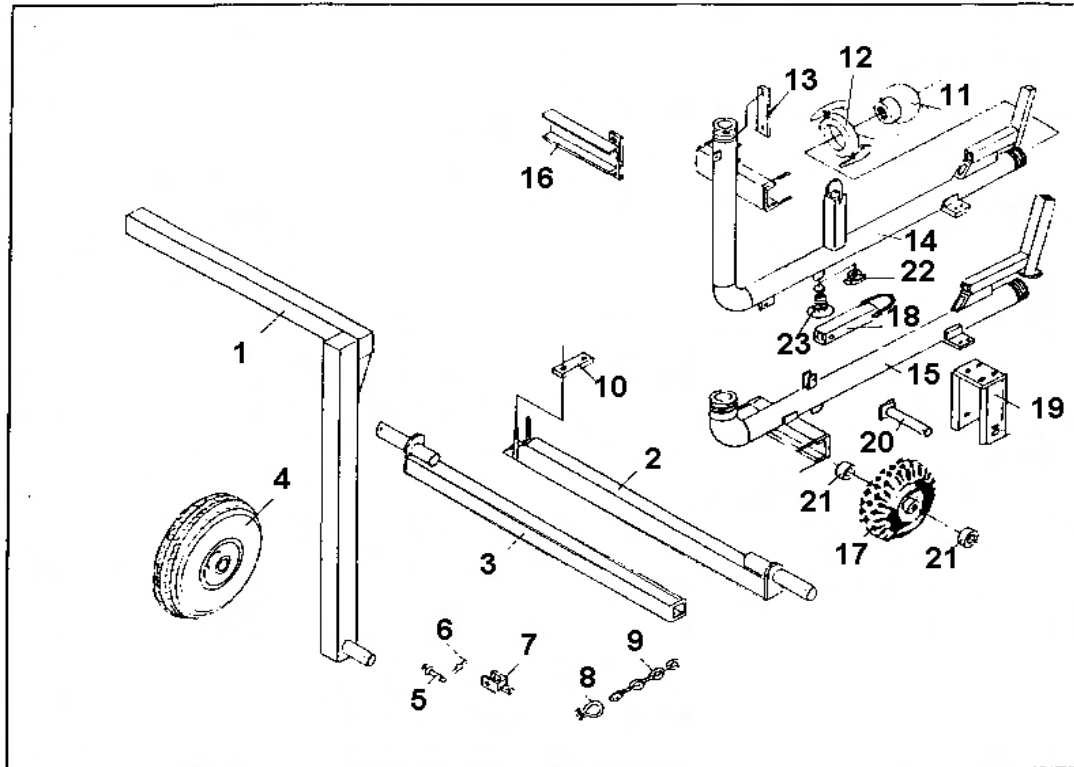
Item	Part Number	Description	Qty.
47	02204270	GEARBOX 126 004394/C	1
51	02203660	BELT,DIA 3.5	1
52	59404411	PULLEY,TACH .966	1
54	02204300	SUPPORT,TACH AA	1
54	02201200	TACHOMETER ASM,0-400 FT/HR A SERIES	1
57	02205990	PLLY,100M,80M,61M XBORE10(2 SETSCR)	1
89	02201900	SPACER DIA18X2.8BASE A175	1
90	02204330	support	1
91	02201210	SHIELD,PTO SPLINE	1
92	02204790	CRANK, PTO REWIND (not shown)	1
93	55070110	SCREW 10MMX25MM ALEN FLAT	1

Gearbox

Gearbox
Description

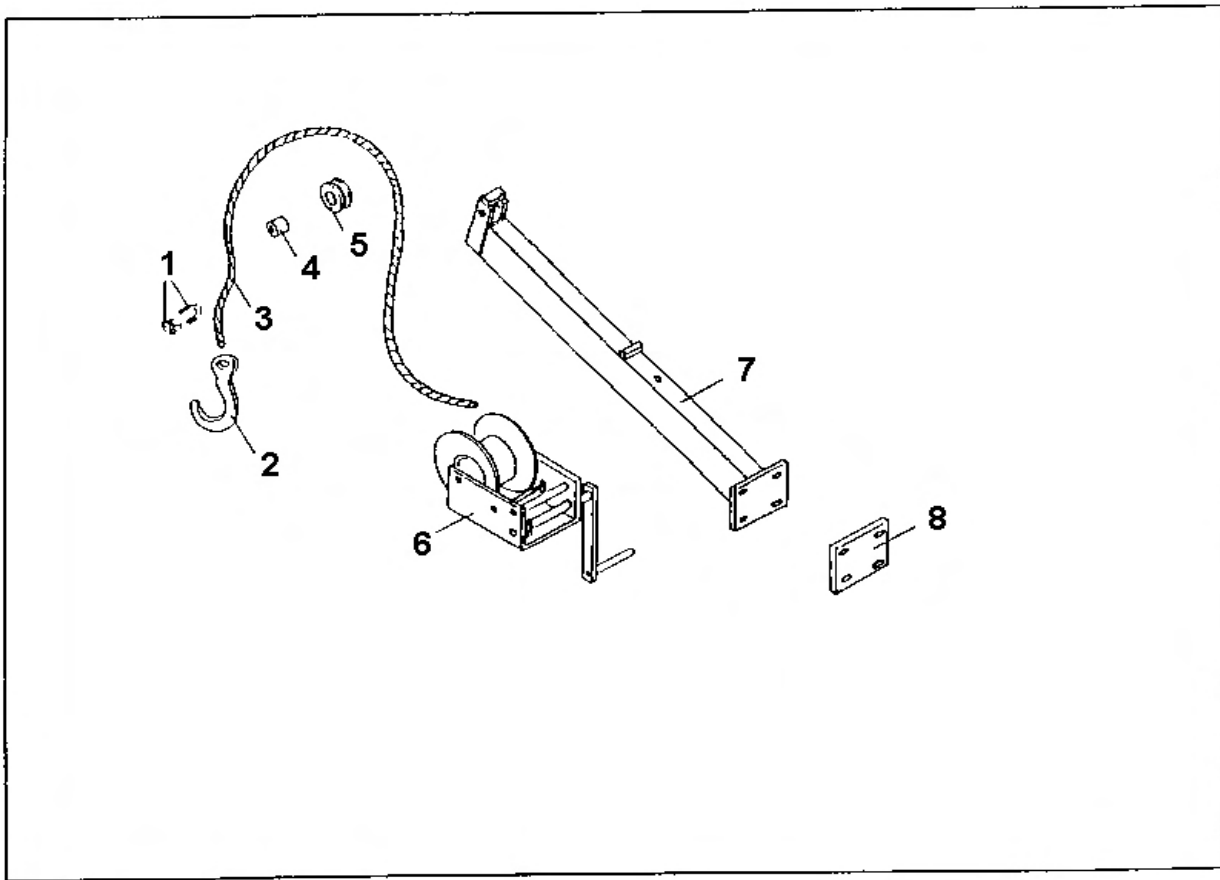
Item	Part Number	Description	Qty.
1	02205770	SPACER 5.5 003966/A	1
2	02205780	RETAINING RING I 26	4
3	02205880	BEARING,6000 NO SEALS	4
4	02205770	SPACER 5.5 003966/A	2
5	02205790	RETAINING RING E10	3
6	02206720	SEAL, OIL DIA 10 X 26	2
7	02206730	SEAL, OIL DIA 47 X 25 X 7	1
9	02203430	SNAP RING I 47	2
10	02205890	BEARING,6005 NO SEALS	2
11	02205800	SPACER 9 003967/A	1
12	02205810	SPACER 7.5 003967	1
13	02205820	GEAR/SHAFT Z100 004438 + 002481	1
14	02205830	GEAR/SHAFT 004437	1
15	02206740	SHAFT, GEARBOX INPUT - AA	1
16	02205850	KEY,3MM X 10MM	1
17	02206750	COVER	1
18	02206760	HOUSING, GEARBOX	1
19	02201940	SPACER 22 X 3	1
20	02201950	PIN,SPLINED BASE A1 75MM	1
21	02201930	PIN,BEARING 2X17.5	62
22	02201900	SPACER DIA18X2.8BASE A175	1
23	02201890	RING,STOP BASE A1 75MM E18	1
25	02204270	GEARBOX 126 004394/C	1
26	02201910	SAFETY KEY & THREADED PIN	1

GUN CART



GUN CART			
Item	Part Number	Description	Qty.
1	58609996	Gun cart leg T-21	2
2	58900024	AXLE, OUTER T-21 LOW	1
3	58900014	AXLE, INNER T-21 LOW	1
4	58602290	WHEEL&TIRE, 480/400X8 1B 2P	2
5	55832810	PIN, HITCH 3/4X3 T HEAD	1
6	56102040	PIN, HAIR .118DIAX2-11/16	1
7	52354210	HITCH, CHAIN	1
8	58900791	SHACKLE RD PIN CHN5/16GLV	2
9	85040590	CHAIN, 3/16 PROOF COIL PLTP	3
10	58408433	PLATE, CLAMP	1
11	58802810	COUPLER, 3" BALLX2" FEMALE	1
12	58800221	LEVER RING 3" 451 76MM	1
13	58700820	STRAP	1
14	58406564	Gun Cart Body, T-21 High	1
15	58900002	BODY, GUNCART LOW T-21	1
16	58700830	CLAMP	1
17	58608110	WHEEL&TIRE, 4:1X3:5X4 1B2P	1
18	58900870	BAIL, LIFT ARM	1
19	58801481	YOKE	1
20	58608990	AXLE	1
21	58608440	SPACER	2
22	52549421	BSHNG, RDCNG GLV 1-1/4X1	1
23	06002451	VALVE, QUICK DRAIN WADE	1

GUN CART Lift Assembly



Item	Part Number	Description	Qty.
1	56048450	CLAMP,SCREW 7/32X5/8	2
2	52355651	HOOK CLEVIS SLIP 1/4	1
3	75048440	CABLE,1/4-7X19 GAC PER FT	8 ft.
4	32551910	BUSH,STL.843X.56X.62L	1
5	40249060	PLLY,WRP17/32X2X7/8B STL	1
6	40048551	WINCH FULTON K 1550	1
7	58802982	BOOM,GUNCART T-21-25	1
8	58803450	CLAMP PLATE	1

1 [Warning Decal: Personal injury may result if the blade is manually operated. Use extreme caution to avoid a re-entrance.]

2 [Instruction Decal: Speed Compensation. Make [] or [] depending on load. Lightest for lightest load, heaviest for heaviest load.]

3 [Table: 21A PERFORMANCE GUIDE]

5 [Image: DCL ROUND LOGO 6 IN.]

7 [Text: AG-RAIN]

9 [Diagram: Drive Chain Idler Spring Adjustment. 12". []

Item	Part Number	Description	Qty.]
1	59405651	DECAL,WARNING	1
2	59405650	DECAL,INSTRUCTION	1
3	59404034	DECAL PERFORMANCE 21A	1
5	58502992	DCL ROUND LOGO 6 IN.	1
7	58504043	DECAL,AG-RAIN 1-1/2X7-3/8	1
9	59001100	DECAL, SPRING ADJUSTMENT	1