

PARTS MANUAL

E200SST

Serial Numbers 440,000+

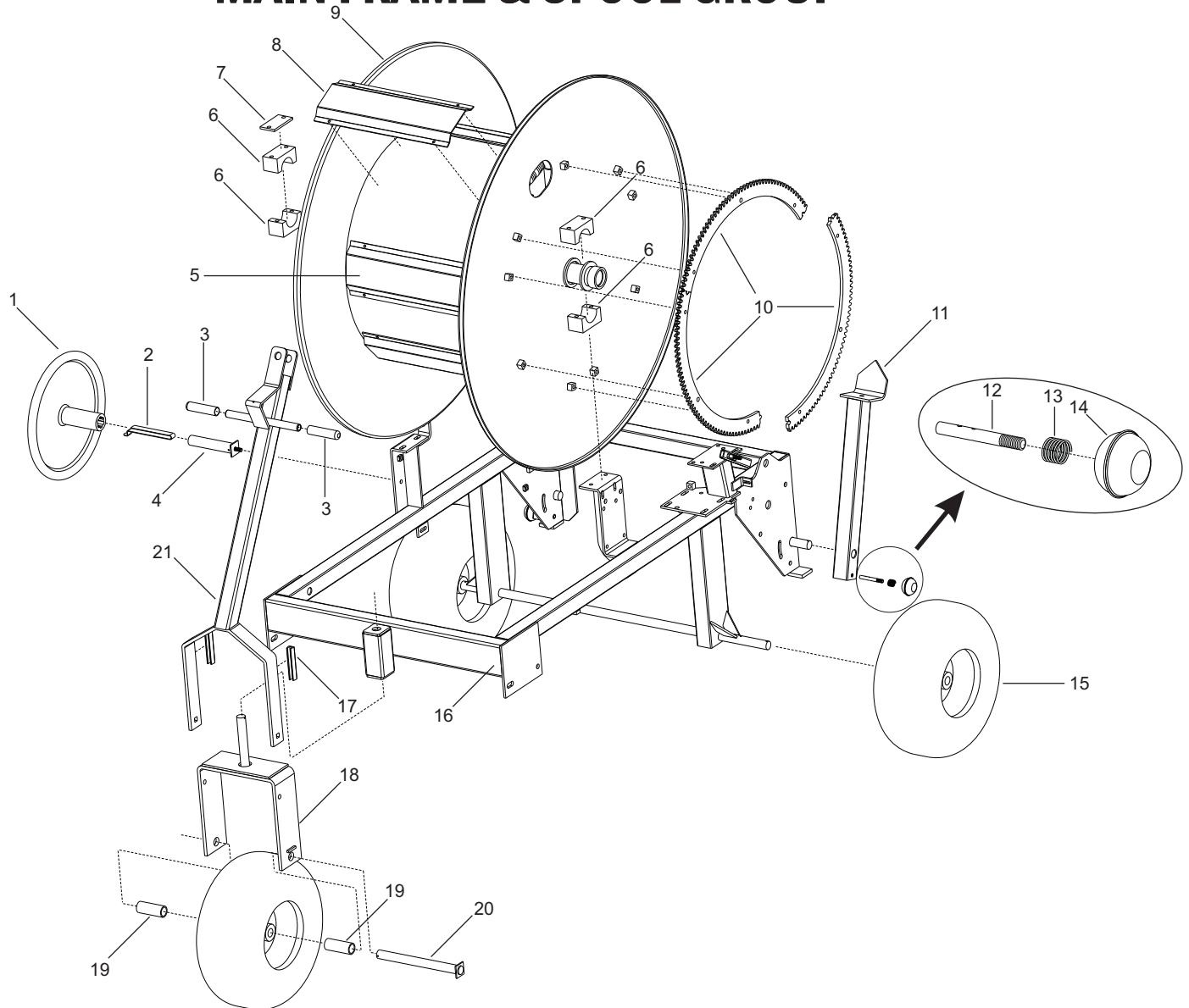
700 S. Shrader Ave.
P.O. Box 290
Havana, IL 62644
Phone: (309) 543-4425
Fax (309) 543-4945
www.kifco.com

Table of Contents

Main Frame & Spool Group	3
Guard Group	4
Plumbing & Pump Group	5-6
Tube Rider & Shut Off Group	7
Level Wind Group	8
Drive Group	9
Cart Lift Group	10
Diaphragm Valve Plumbing Diagram	10
Gun Cart Group	11

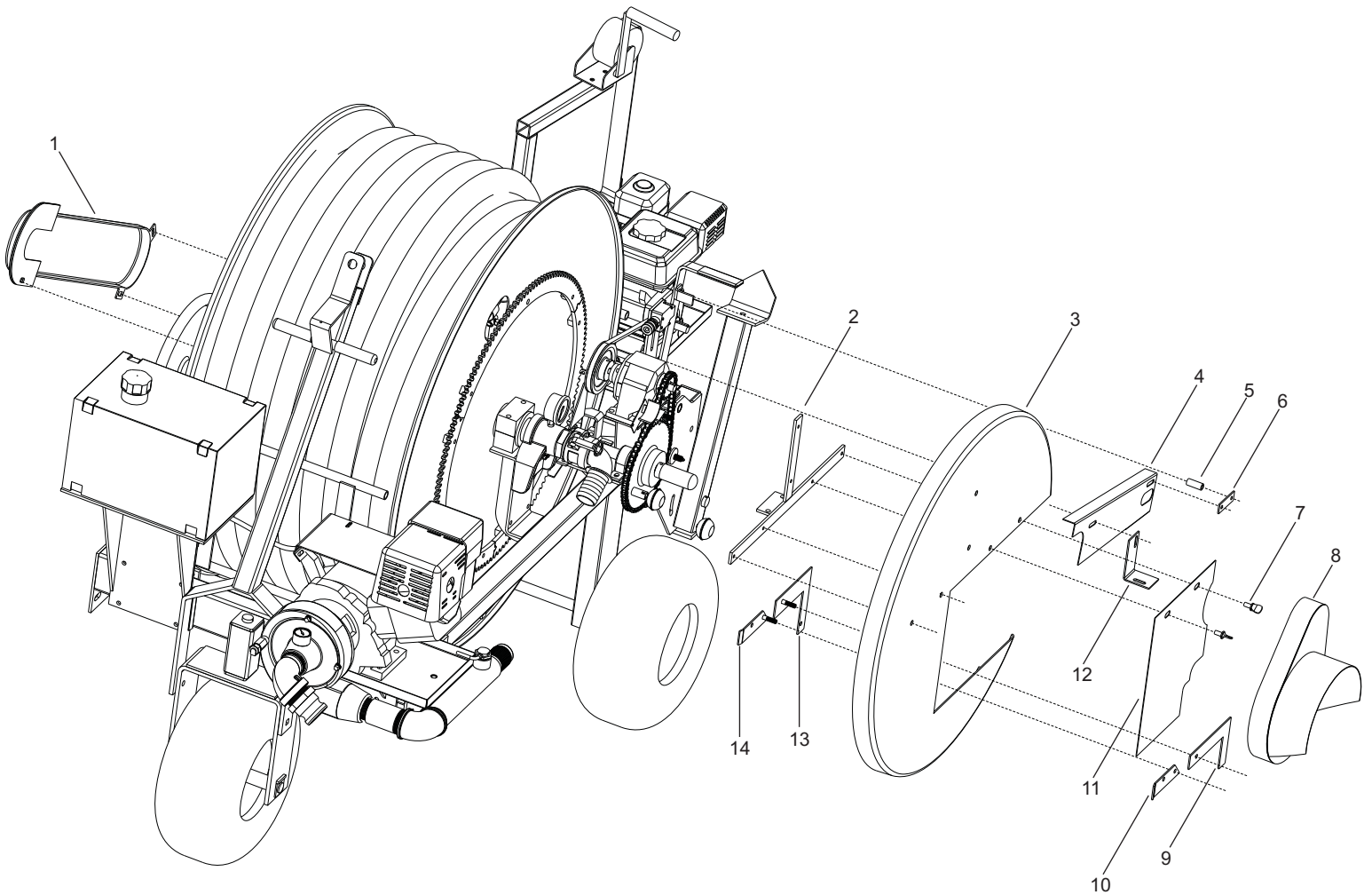
NOTE: Some items such as fasteners, grease fittings and other small parts that are easy to acquire locally are not listed.

MAIN FRAME & SPOOL GROUP



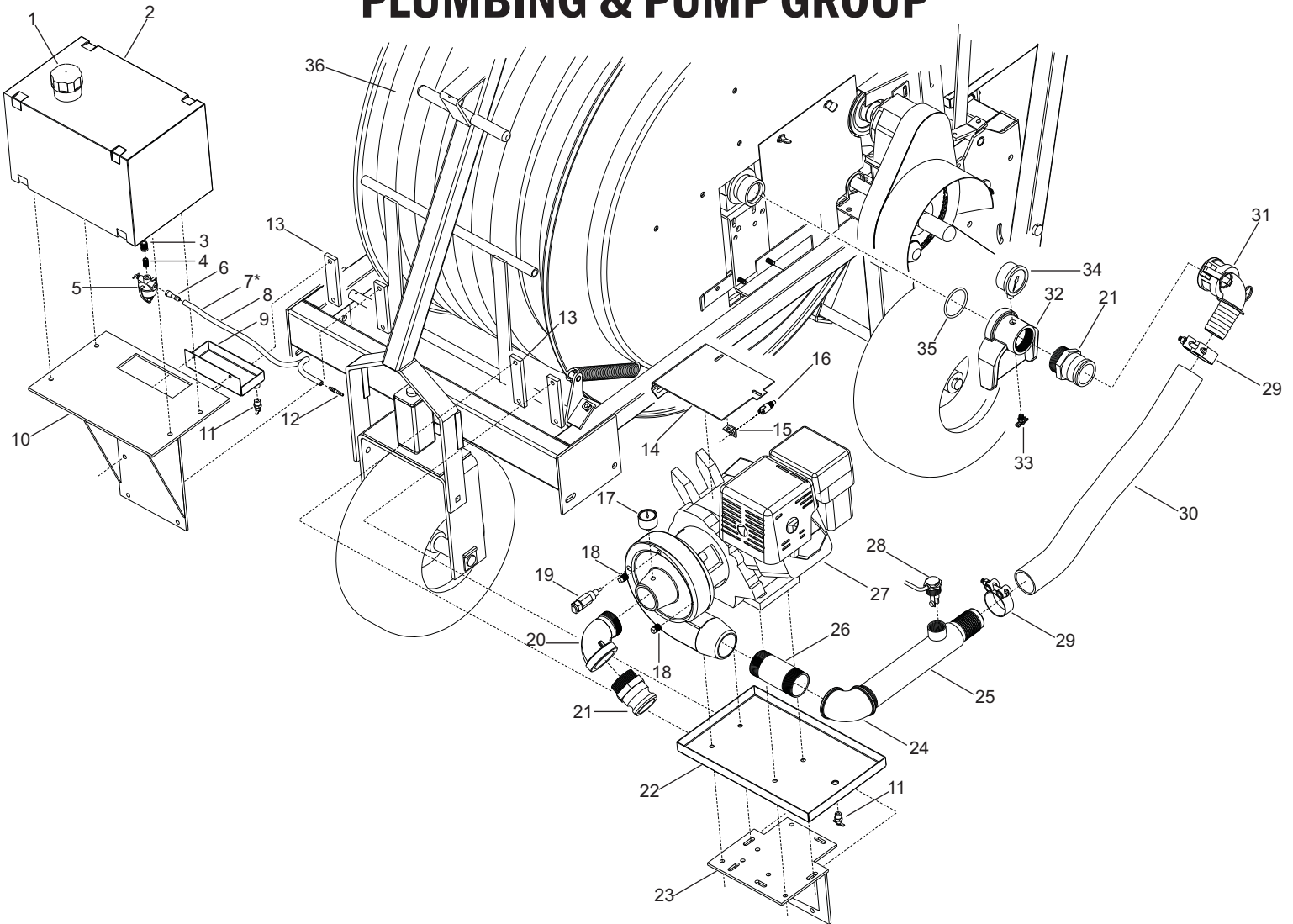
No.	Part Number	Description	Qty.
1	50200050	WHEEL, PE TUBE HAND WIND	1
2	50201650	SPRING CATCH HAND WHEEL	1
3	58702520	GRIP, BLACK MOCAP.812X4.0"	2
4	50201490	BRACKET ASM, HAND WHEEL	1
5	50601321	CORE KIT PART 21" POWDER COAT BLACK	7
6	50302191	BEARING, HALF 2.25" (UHMW)-WRT4C/5C	4
7	50305470	PLATE, BEARING - WRT4C/5C	1
8	50601323	CORE PART 18.5" POWDER COAT BLACK	1
9	50401601	SPOOL ASM, PE TUBE - WRT4C 27"	1
10	50004871	GEAR SEGMENT, PE SPOOL - WRT4C/5C	3
11	50401740	LEG ASM, STABILIZER - WRT4C/T5C PB	2
12	50401900	PIN, STABILIZER LOCK-WRT4C/5C PL	2
13	50402150	SPRING, COMP 3/4 X 7/8 X .052 PL	2
14	30249150	KNOB, BALL 3/8-16 FEMALE THREADS	2
15	59903941	WHEEL ASM, TIRE, RIM, BUSH 18X8.5X8X1"	3
16	50401700	FRAME ASM, MAIN - WRT4C	1
17	50403440	BUMPER, TONGUE - WRB3C/T4C/T5C	2
18	50303540	YOKE ASM, FRONT- B130C TO T200C	1
19	50303862	SPCR, FRNT AXLE(3.36")-WRT4C/5C PL	2
20	50303151	AXLE ASM, FRONT-WRB3C THRU WRT5C	1
21	50303210	TONGUE ASM - WRB3C THRU WRT5C	1

GUARD GROUP



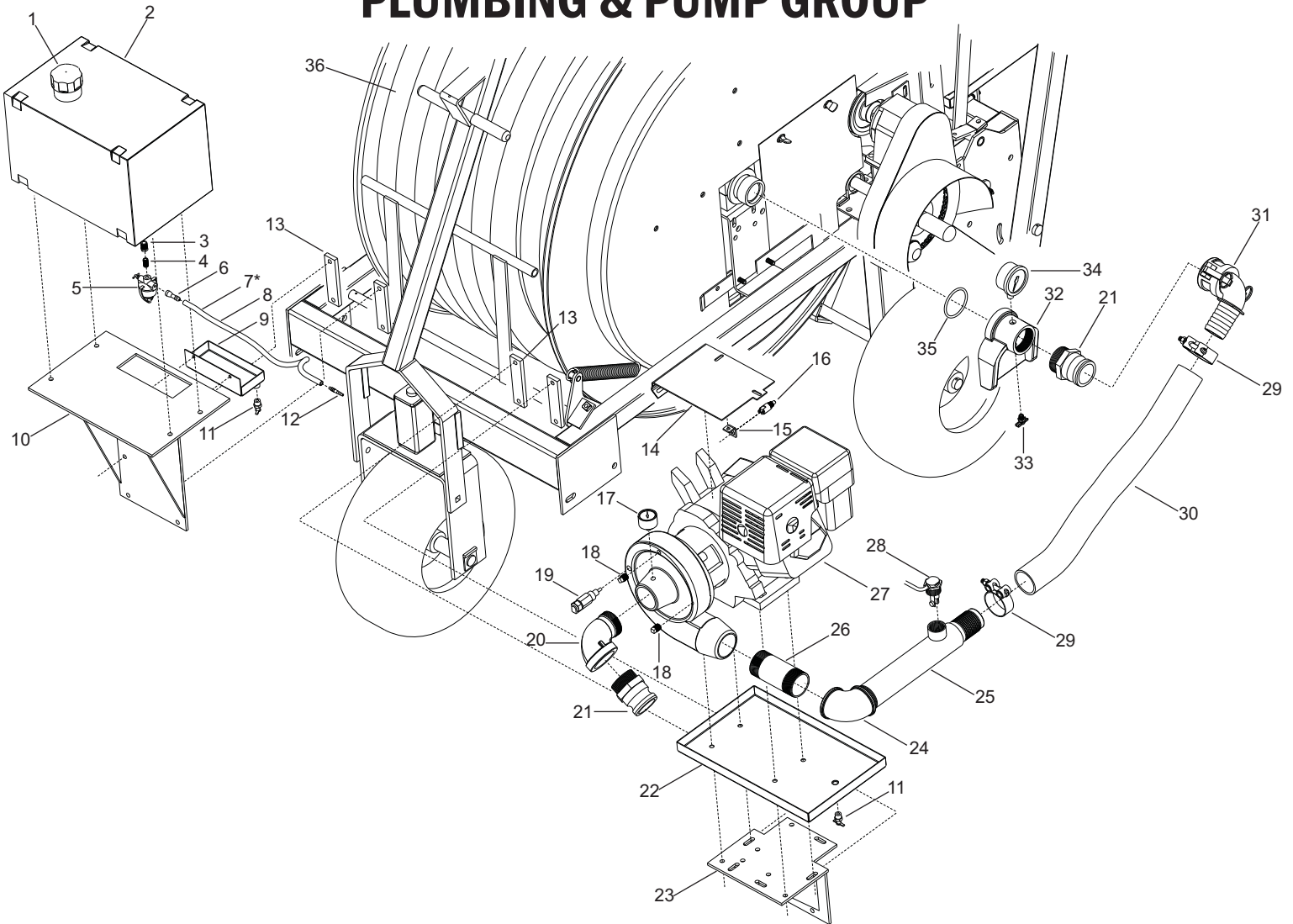
No.	Part Number	Description	Qty.
1	50308971	GUARD ASM, LEVELWIND CHAIN - WRT4C	1
2	50601260	SHIELD BRKT TOP T/E5/5 KB	1
3	50601300	GUARD, UPPER RING GEAR TURBINE/ENGINE	1
4	50601000	SHIELD, CHAIN WRE4/5 TURF	1
5	50601110	BUSHING, BELT GUARD MT. REAR PL	1
6	50900380	BRACKET, BELT GUARD SST	1
7	50603000	THUMB SCREW, SPADE 3/8-16 ZINC P	2
8	50400741	GUARD, POWERTRAIN CHAIN-WRT4C/5C PB	1
9	50601040	SHIELD BRKT FRONT T/E5/5 PB	1
10	50601020	SHIELD GUIDE REAR T/E5/5 PB	1
11	50601311	GUARD, LOWER RING GEAR ENGINE	1
12	50601010	FRONT SHIELD MT. E4/5 BK	1
13	50601060	SHIELD BRKT FRONT T/E5/5 P/C BLACK	1
14	50601030	SHIELD GUIDE PB	1

PLUMBING & PUMP GROUP



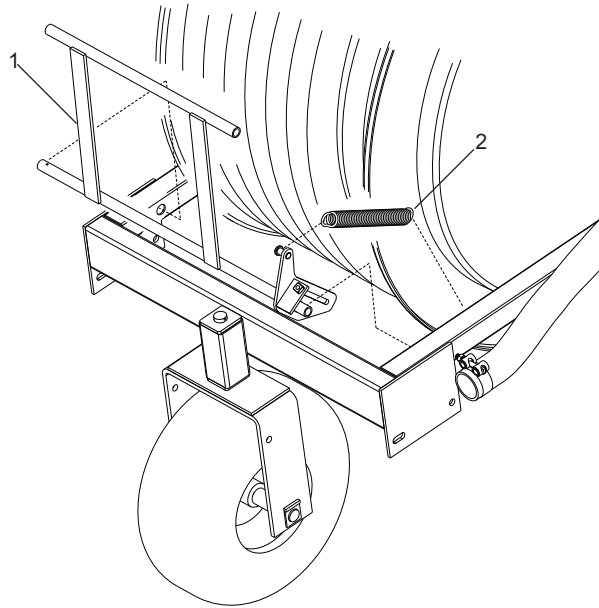
No.	Part Number	Description	Qty.
1	50207109	CAP, 3 GAL GAS TANK	1
2	50207100	TANK, GAS 6 GAL PLASTIC W/FITTING	1
3	52547842	BSHNG, RDCNG BR 1/4X1/8	1
4	52508981	NPPL,CLOSE BR 1/8 SCHD. 40	1
5	27749190	FILTER,GLASS BOWL FUEL	1
6	52548760	BARB,HOSE BR 1/8 NPT X 1/4	1
7*	50404620	FUEL FILTER 1/4" CLEAR (Not shown in diagram)	1
8	58406951	HOSE,GAS 1/4X27/64	2.13 ft
9	50800470	FILTER DRIP PAN	1
10	50308190	BRACKET, 6 GAL TANK - WRB3C,WRT4/5C	1
11	52532160	PETCOCK,DRAIN BR 1/4	2
12	59203221	BARB,RDCNG HOSE 1/4X3/16	1
13	50400390	STRAP, CLAMP BOOSTER WRB/T3,4,5	4
14	59701660	ENGINE COVER 9 HP HONDA	1
15	59800290	SWITCH MT.	1
16	59404231	SWITCH,OVERRIDE NRML CLSD	1
17	58606742	GAUGE,PRESS 0-160REAR MT	1
18	52502620	PLUG,GLV SQ HD 1/4	2
19	59506690	VALVE,MODIFIED 1/4" THERMO	1
20	58408410	ELBW,STRT GLV 2X90DEG	1
21	58608031	CMLK,F MA2X2MNPT	2
22	50800420	BOOSTER PUMP DRIP PAN	1
23	50900130	BOOSTER PUMP ENG MT, 5/9HP C-SERIES	1

PLUMBING & PUMP GROUP

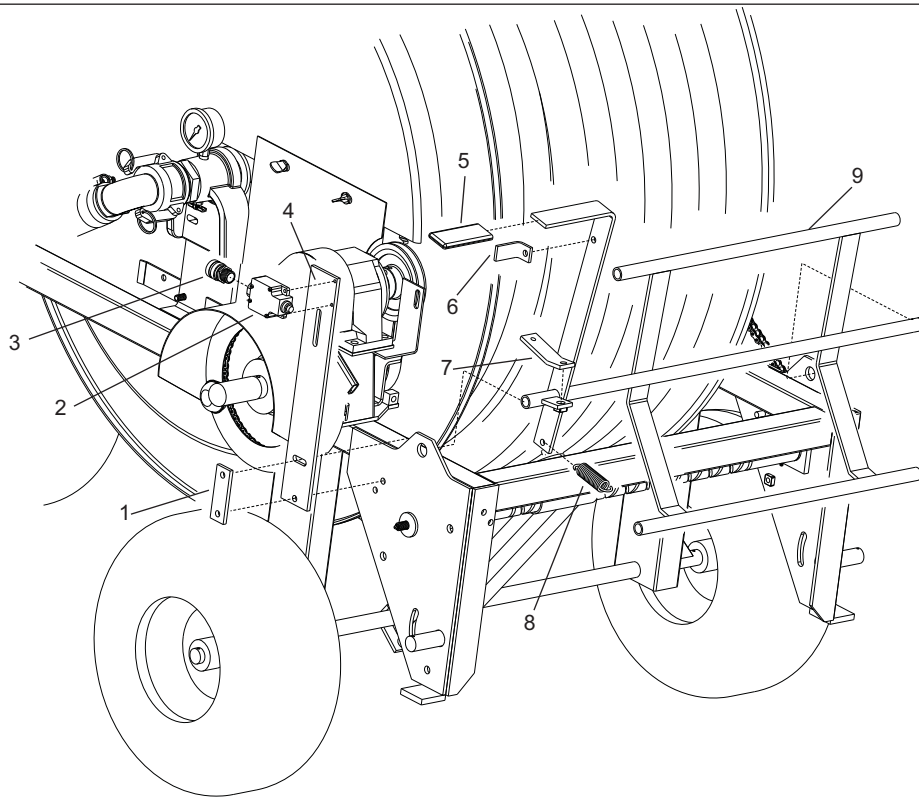


No.	Part Number	Description	Qty.
24	58408420	ELBW, CMMN GLV 2X90DEG	1
25	50403100	FLOW CONTROL TUBE FOR WRT4/5C KB	1
26	58408400	NPPL, GLV 2X5	1
27	59203215	PUMP&ENGINE, MNRCH 9HP HONDA	1
28	59404210	SWITCH ASM, PADDLE FLOW	1
29	03019160	SUPRA CLAMP 59MM-63MM (One Clamp on Hose (#36) to Spool Barb)	3
30	58401330	HOSE 2 ID 150 GY PLICORD	2.5 ft
31	58608026	CL CAMLOCK 90 DEGREE 2.0	1
32	50600950	ENTRY FITTING WRT/E4D	1
33	52532250	PETCOCK, DRAIN BR 1/8	1
34	58606740	GAUGE, PRESS 0-160	1
35	50301880	O-RING 2-7/8 X2-1/2 X3/16	1
36	50100341	TUBE, PE 58MM 2.0IDX320FT	1
**	50801831	DRAIN-KIT FOR GX240-GX270	1

TUBE RIDER & SHUT OFF GROUP

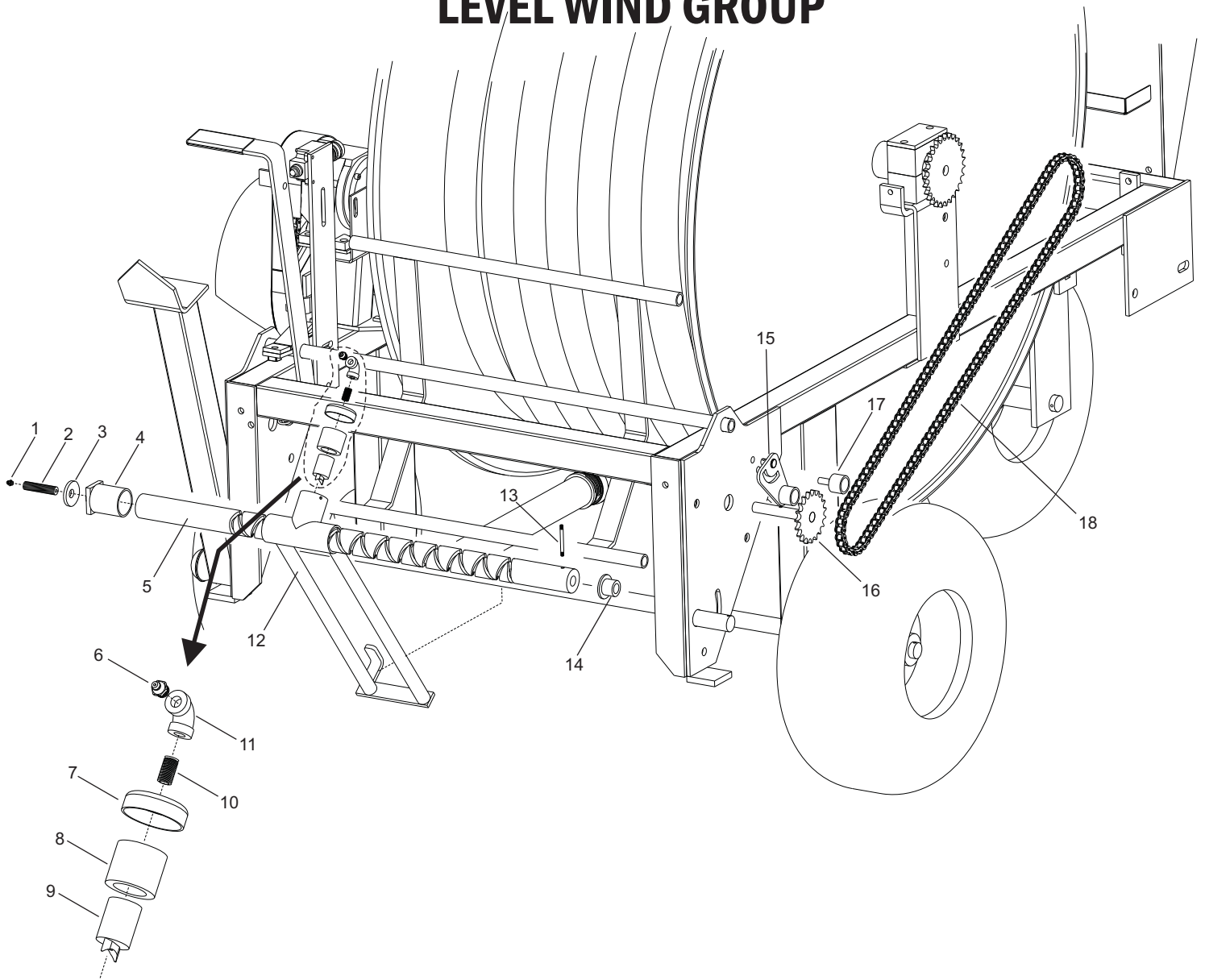


No.	Part Number	Description	Qty.
1	50303983	TUBE RIDER ASM - WRT4C/5C PB	1
2	50308800	SPRING, TEN 10"X1.25OD	1



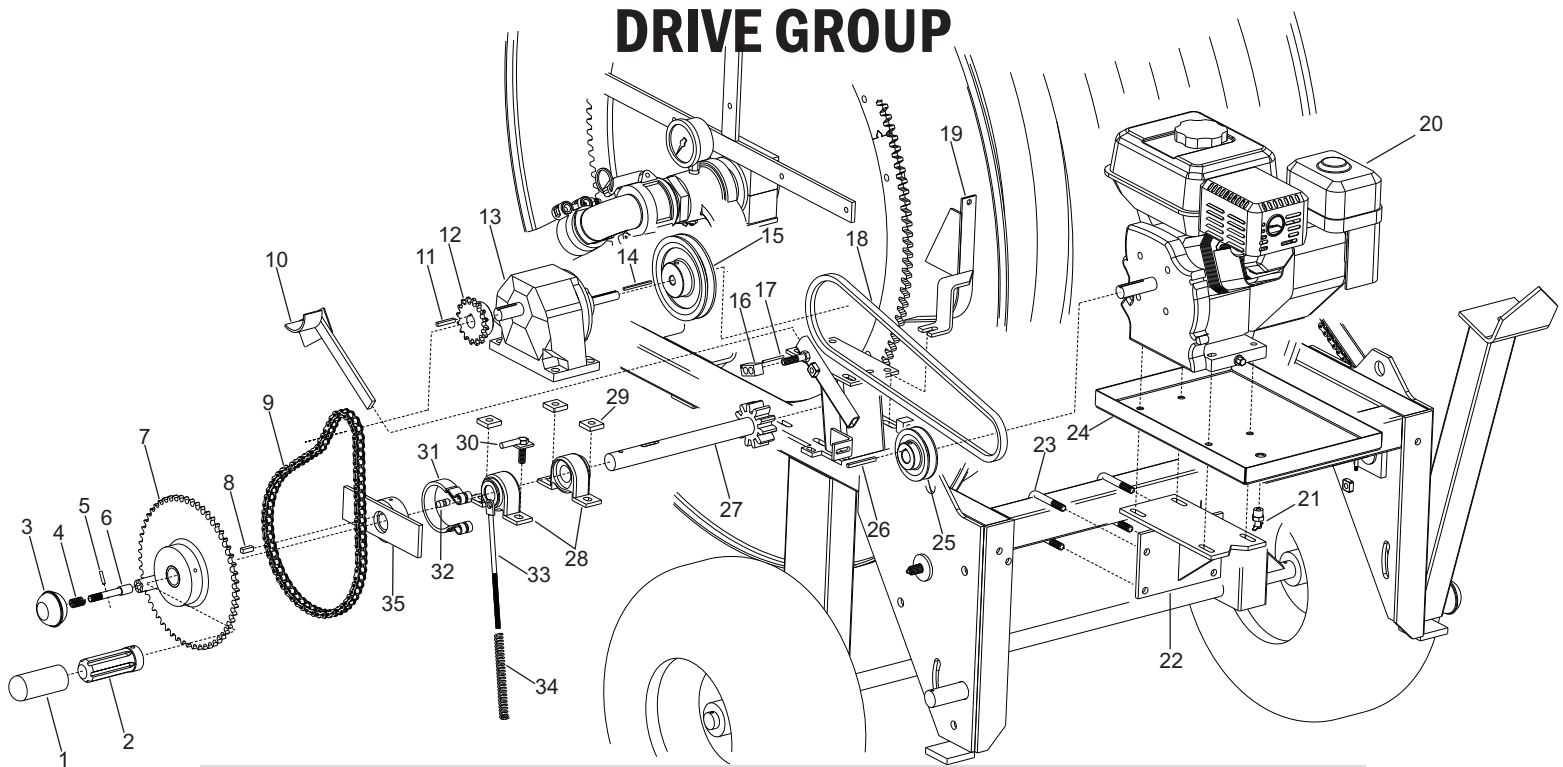
No.	Part Number	Description	Qty.
1	50601500	STRAP, CLAMP SHUT OFF ARM IG	1
2	52662151	SWITCH 6 X 613	1
3	52662170	GROMMET, CMPRSSN 1/2 NPT	1
4	50600560	SWITCH MT. E4/5	1
5	50403160	CAP, BLACK MOCAP 1-1/2"X1/4"X4.0"	1
6	50600570	SWITCH STOP E4/5	1
7	50601280	SHUT OFF BAR STOP	1
8	45048583	SPRING TNSN 7/8X3.62X5/8	1
9	50402120	SHUT OFF BAR WRT4/5C	1

LEVEL WIND GROUP



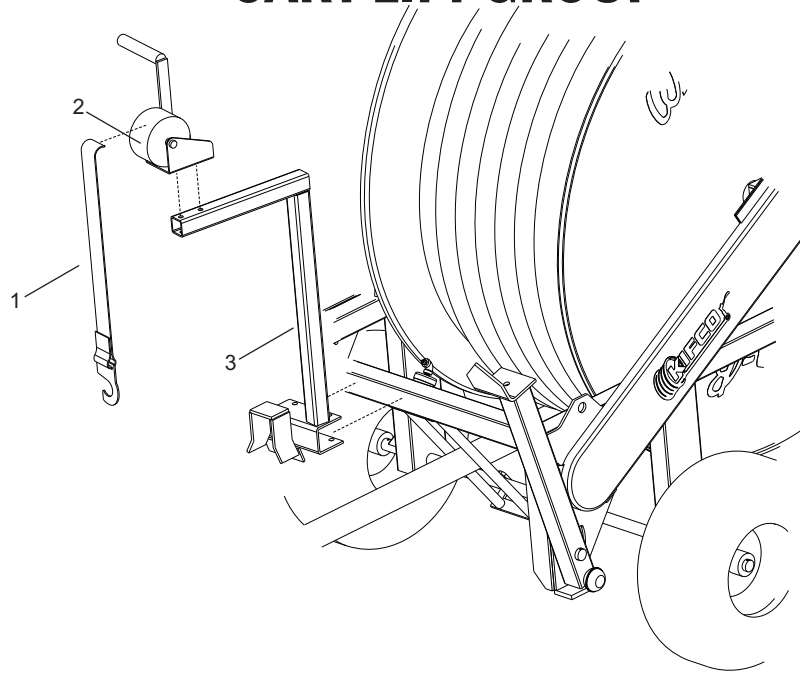
No.	Part Number	Description	Qty.
1	53817440	ZERK, STRAIGHT 1/4-28X17/32	1
2	50500700	STUD, LEVELWIND GREASING	1
3	50405220	WASHER, CUPPED PL	1
4	50501080	SLEEVE, LEVELWIND -WRT4C/5C KB	1
5	50303384	SCREW, STEEL LVLWND-WRB3/4/T5C 5/8"	1
6	53848441	ZERK, STRAIGHT 1/8NPT	1
7	50501140	CAP, LEVELWIND KNIFE COVER	1
8	50303350	SLEEVE, LEVELWIND KNIFE (UHMW)	1
9	50302320	KNIFE, LEVELWIND - WRB2C/3C/T4C/5C	1
10	52508981	NPPL, CLOSE BR 1/8 SCHD. 40	1
11	52540345	ELBW, COMM GALV 1/8X90	1
12	50303661	FORK ASM, LEVELWIND - WRT4/5C KB	1
13	50406100	STUD, LEVELWIND SHEAR - WRB2/3/4/5C	1
14	50302412	BSHNG, FLANGE .625IDX1X1.5 (UHMW)	1
15	50405820	IDLER, WRT4/5C LEVELWIND CHAIN PL	1
16	50405263	SHAFT ASM, LEVELWIND 19T - T200C KR	1
17	50405830	IDLER, BOLT WRT4/5C LEVELWIND PL	1
18	87548450	CHAIN, #40 ROLLER 139 Rollers	5.8 ft

DRIVE GROUP



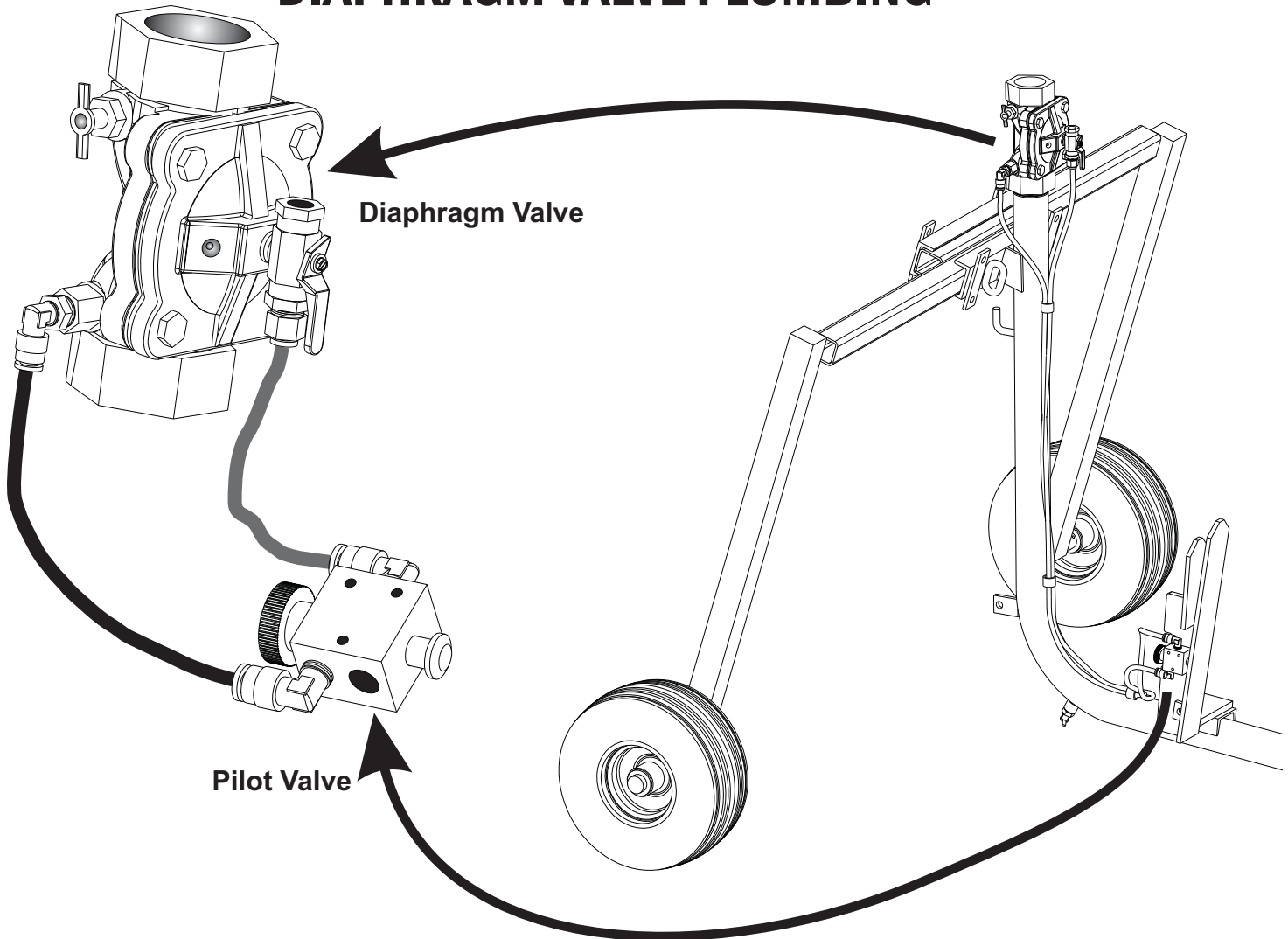
No.	Part Number	Description	Qty.
1	50303682	CAP, BLACK MOCAP 1.375" X 3" FE	1
2	50003180	PTO SPLINE ADAPTOR	1
3	30249150	KNOB,BALL 3/8-16 FEMALE THREADS	1
4	50006210	SPRING, COMP .50"ODX.90LNG.046 W	1
5	58505911	PIN,SPRING 5/32 X 3/4	1
6	59801300	CLUTCH DOG PIN PL	1
7	50002160	SPROCKET ASM, CLUTCH-WRT3/4/5 & C	1
8	56316621	KEY 1/4 X 1/4 X 3/4	1
9	50802950	CHAIN, #40 70 ROLLERS + 1 HALF LINK	1
10	50005800	IDLER, CHAIN	1
11	58504460	KEY 3/16 X 1-1/4	1
12	88048946	SPRKT,40B16 3/4"BORE	1
13	50008501	GEARBOX 50-1 B TURB. LARGE	1
14		KEY, 1/8" x 2"	1
15	50206715	PULLEY, 5.0 OD X 1/2 BORE CAST	1
16	50402350	PAWL, ANTI REVERSE - WRT4C/5C	1
17	50403320	PIN, SPRING 1/8" X 1-1/2 SS	1
18	59903434	BELT AX 40 (NOTCHED)	1
19	50601100	PINION GEAR SHIELD T/E5/5 PB	1
20	58407017	ENGINE,HONDA 4HP KEYED SH	1
21	52532160	COCK, DRAIN BR 1/4	1
22	50600230	ENGINE MT. E4/5 BK	1
23	58700401	BOLT,U SQ 3/8X2X2-3/4	1
24	50800430	DRIVE ENGINE DRIP PAN	1
25	50300500	PLLY, 3.05" X 3/4 BORE CAST WITH HUB	1
26	52358590	KEY, 3/16 SQ X 2.0	1
27	50304110	SHAFT ASM, PINION - WRT4C/5C	1
28	58609830	BEARING,PLLW BLCK 1"	2
29	50405721	WASHER, BEARING,HOLD 1 X 1 SQ X 1/4	3
30	50600170	BRAKE MT. WRT4/5C KB	1
31	50006220	BRAKE BAND - WRT3/4/5, & 2G,4C/5C	1
32	50104140	PIN,BRAKE BAND RET. WRT	1
33	50001851	SCREW ASM, BRAKE ADJUST-WRT4C/5C PL	1
34	50104331	SPRING, COMP. .075W X .5 OD X 5.0"	1
35	50003160	BRAKE DRUM, CLUTCH DOG	1
**	50801830	DRAIN-KIT FOR GX120-GX160	

CART LIFT GROUP

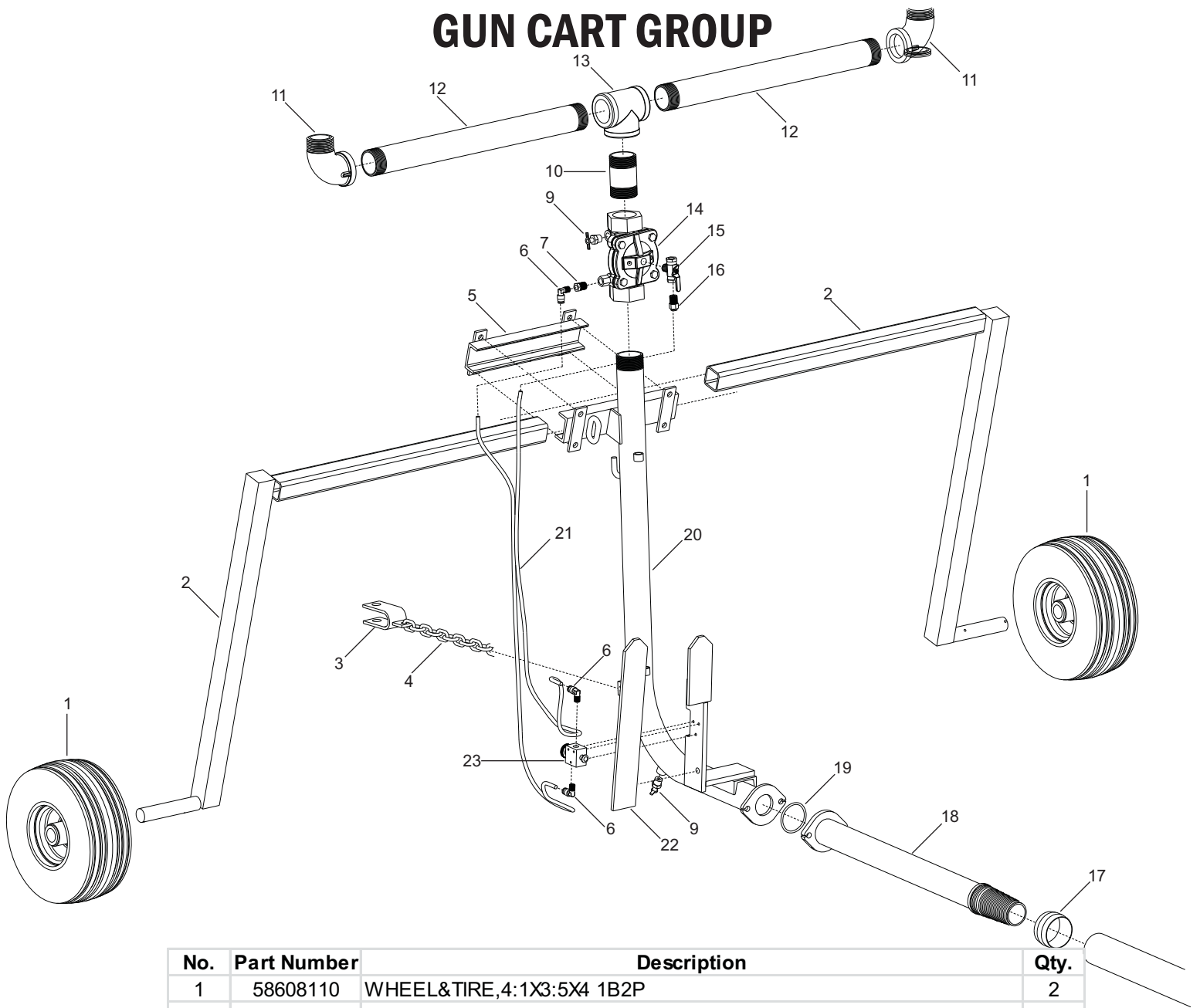


No.	Part Number	Description	Qty.
1	50402630	STRAP ASM, CART LIFT - WRT4C/5C	1
2	40048553	WINCH,FULTON T-600	1
3	50601360	BOOM ENGINE DRIVE MACHINES	1

DIAPHRAGM VALVE PLUMBING



GUN CART GROUP



No.	Part Number	Description	Qty.
1	58608110	WHEEL&TIRE,4:1X3:5X4 1B2P	2
2	58609994	LEG ASM, HIGH GUNCART PS	2
3	59602330	CLEVIS,PULL CHAIN PL	1
4	85040590	CHAIN,3/16PROOF COIL PLTP	2 ft
5	58700830	CLAMP	1
6	52549150	FTG,TB 90 1/8MNPTX1/4TUBE	3
7	52547842	BSHNG, RDCNG BR 1/4X1/8	1
9	52532160	COCK,DRAIN BR 1/4	2
10	58504060	NPPL, GLV 1-1/2X3	1
11	52652740	ELBW, STRT GLV 1-1/2X90	2
12	50601290	NIPPLE, GALV. 1-1/2 X 19.0" LONG	2
13	59404221	TEE, GLV 1.5X1.5X1.5	1
14	50406610	VALVE, DIAPHRAGM 1-1/2" NPT	1
15	50501160	VALVE, 3 WAY 1/4"	1
16	52549172	FTG,TB ST 1/4MNPTX1/4TUBE	1
17	59100614	MENDER OUTER 2.0 PL	1
18	50400421	TUBE END ASM, 200/210 - WRT4/5	1
19	50006790	O-RING 1.984" ID X .139 #226	1
20	51000351	BODY, GUN CART, E200SST UNCOATED	1
21	25249390	TUBE, SYN FLEX 1/4	8.3 ft
22	50308301	BUMPER, CART SHUT OFF - WRT4/5C PS	1
23	42548450	VALVE, MA33 NKL-ALM SPOOL	1