



700 S. Schrader Ave.
P.O. Box 290
Havana, IL 62644
USA
Phone: 309.543.4425
Fax: 309.543.4945

Water -Reel (TM) Irrigation

PARTS MANUAL

B130 - B140 - B180 - B200 - B210

S/N 360,000-369,999

UPDATED 7/18/05

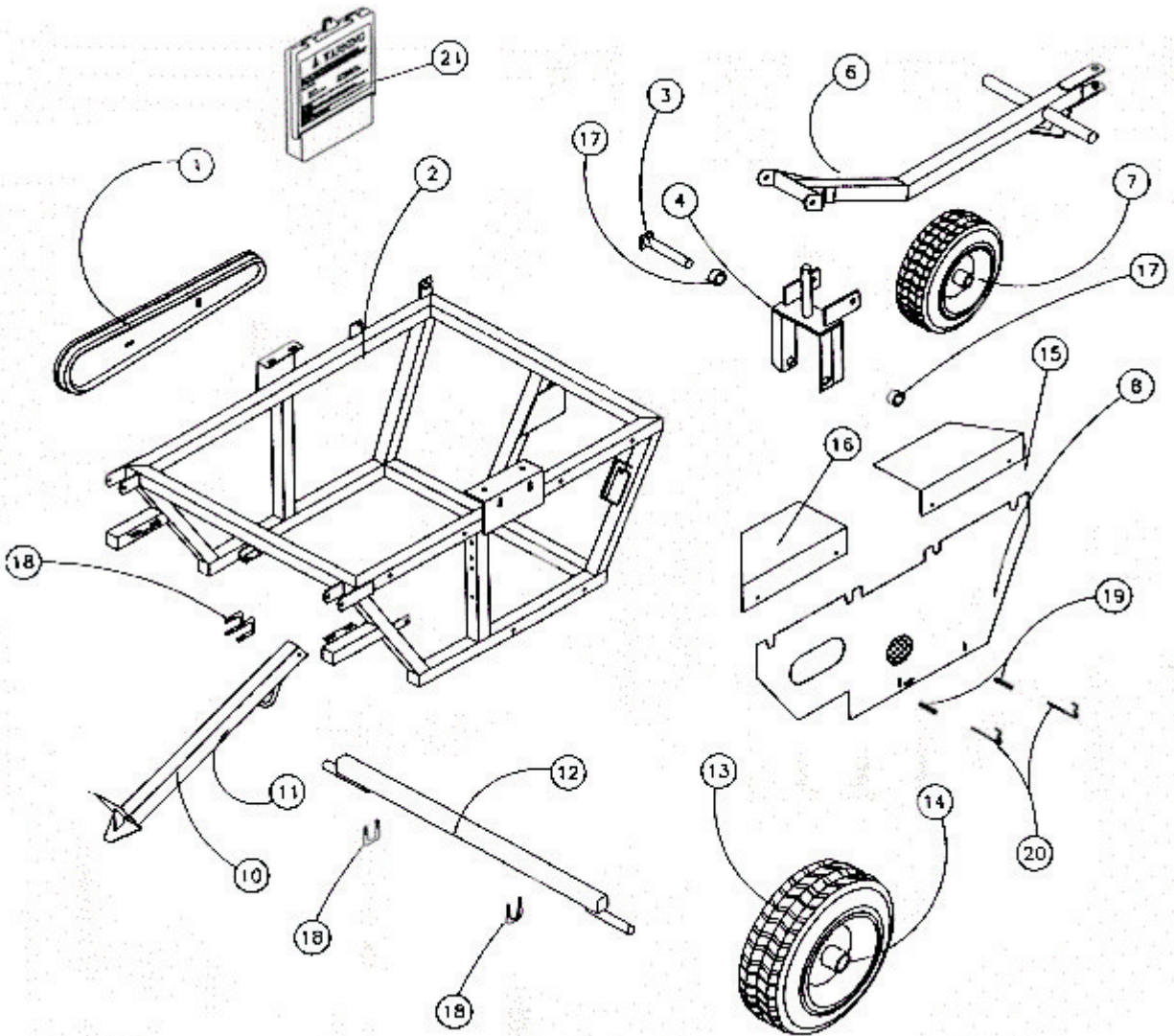
Assembly	Page
Frame and Wheel Assembly	2-3
Water Motor and Plumbing	4-6
Spool and Drive Assembly	7-9
Levelwind Assembly	9
Sprinkler Cart Assembly	10-11
Sprinkler High Cart Assembly	12-13
Decal Group	14
Booster Pump	15-16
Motor and Pump Assembly	17

Notes:

For Parts That Are Described As "Left" Or "Right" The Water Inlet Side Of The Machine Is Considered The Right Side.

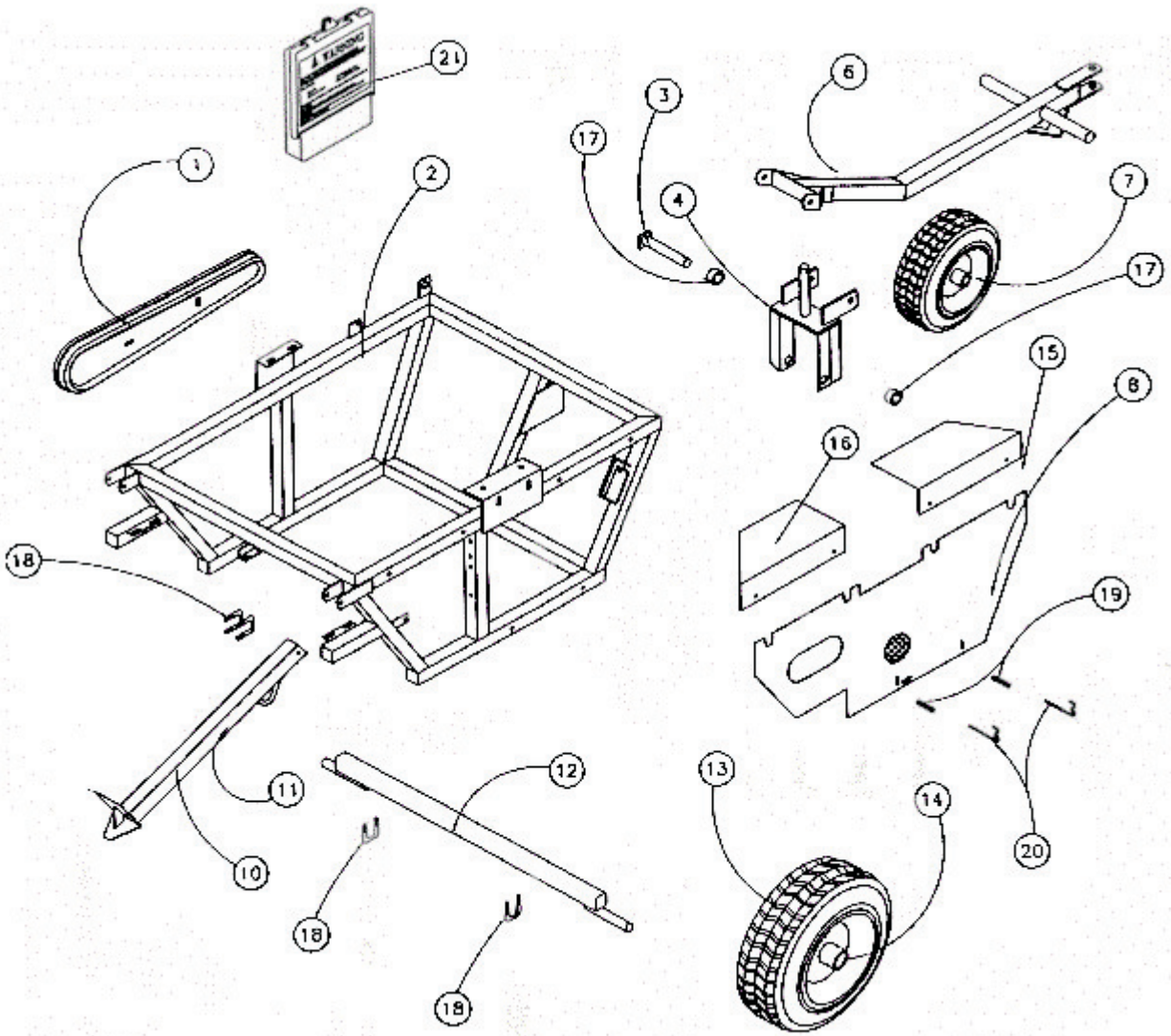
Items Such As Common Fasteners, Grease Fitting, And Other Small Parts Easy To Acquire Locally Are Not Listed.

Frame and Wheel Assembly



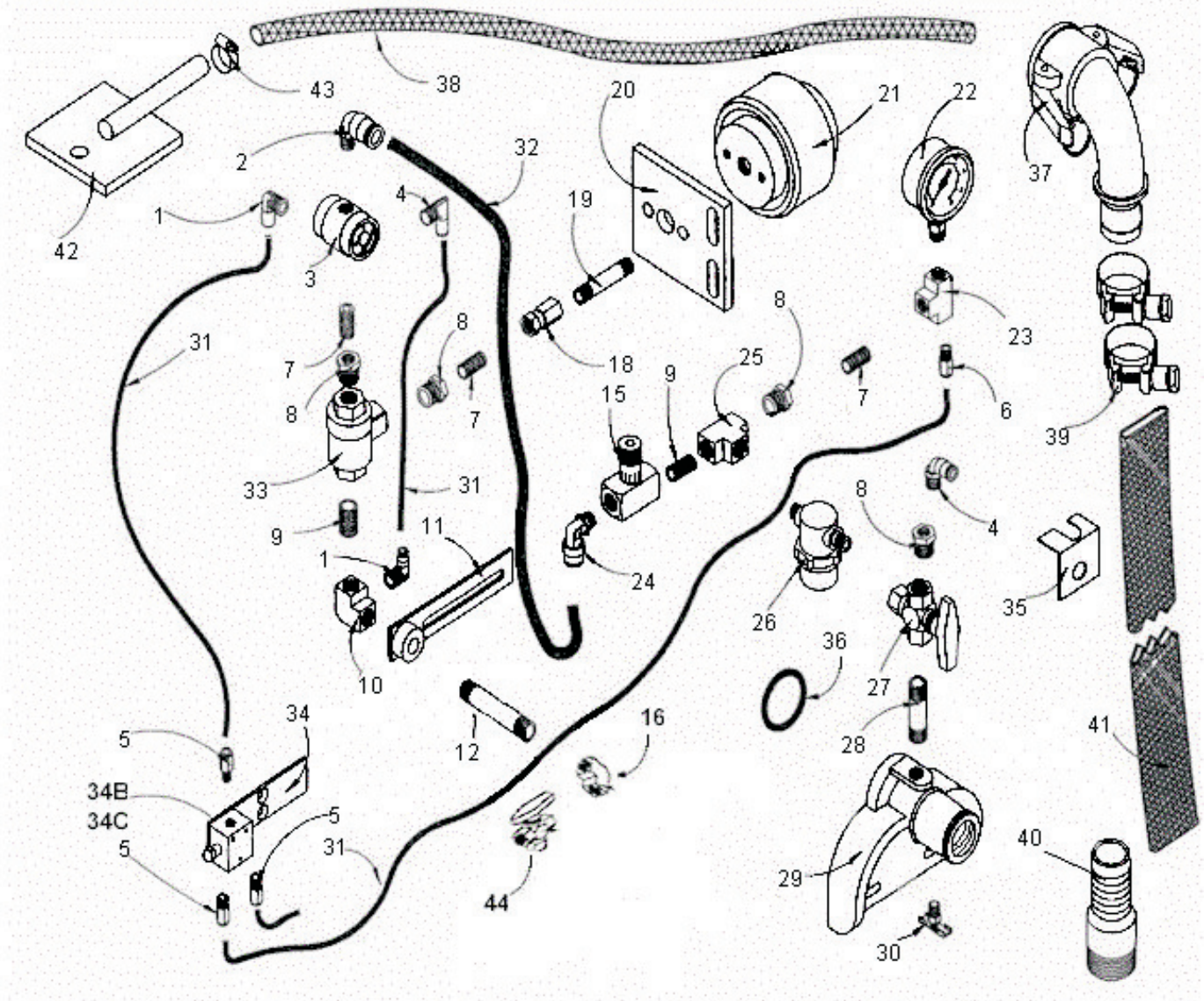
Frame and Wheel Assembly			
No.	Part Number	Description	Qty.
1	586-0753-0	Guard, Levelwind Chain	1
2	500-0649-0	Main Frame 140 Bellows	
3	586-0899-1	Axle, Front	1
4	586-0766-1	Fork, Front Wheel	1
6	594-0529-0	Tongue	1
7	586-0229-0	Wheel & Tire, 4:8 x 4 x 8 with 1" Bore	1
8	586-0799-6	Guard, Lower Side	1
9	595-0145-0	Roller, Idler (Not Shown)	1
10	586-0817-0	Leg, Left Stabilizer	1
11	586-0816-0	Leg, Right Stabilizer	1
12	586-0900-0	Axle, Rear	1
13	586-0229-2	Wheel & Tire, 16 x 6:50 x 8 with 1" Bore	2
14	512-4847-0	Bushing, .40 x .56 x .32" Long	4

Frame and Wheel Assembly



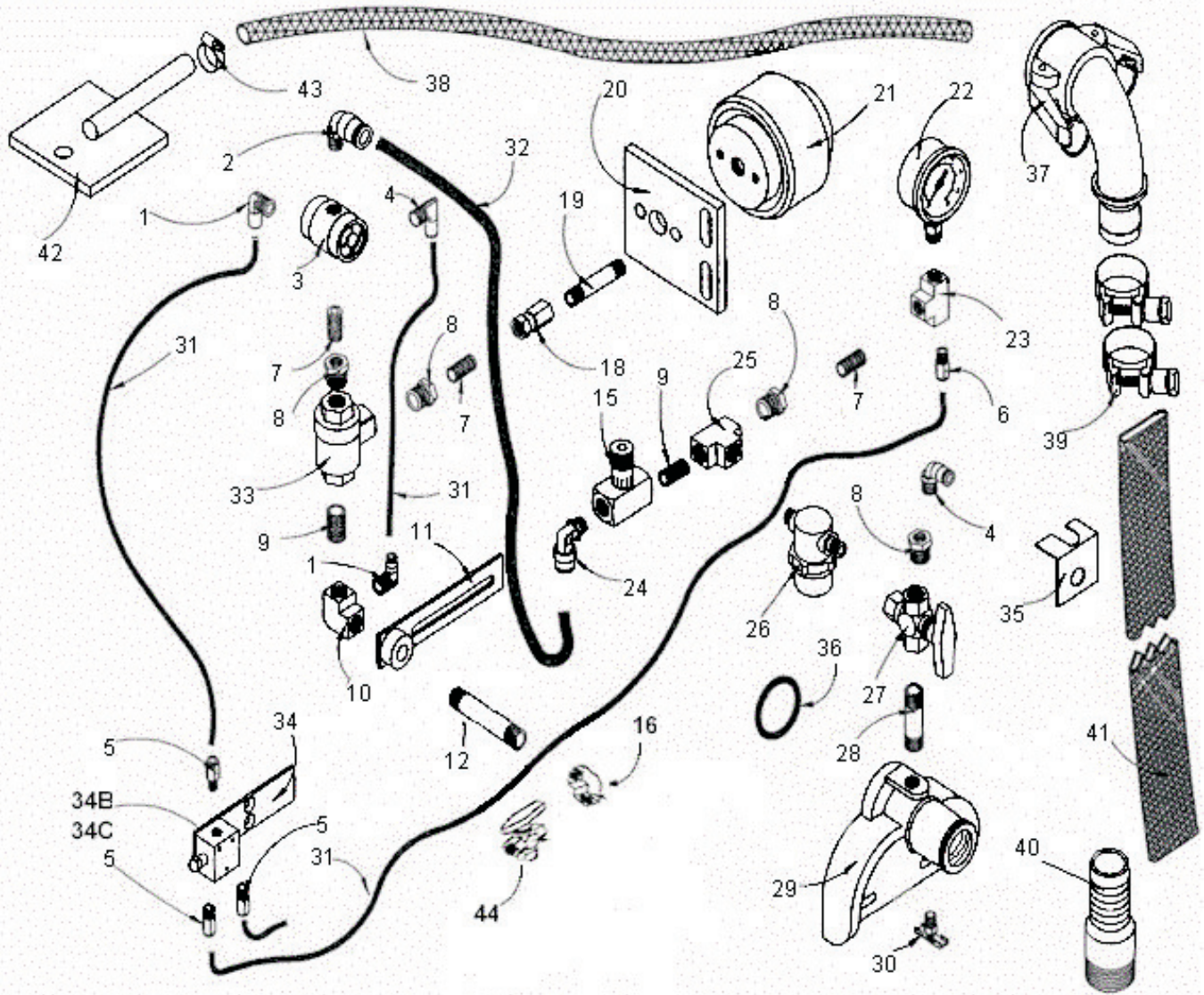
15	588-0016-3	Guard, Upper Rear	1
16	588-0019-1	Guard, Upper Front	1
17	586-0844-1	Spacer	2
18	587-0040-0	Bolt, U 3/8" x 1-1/2" x 1-1/2" x 2-1/4" Long	4
19	450-4858-2	Spring	2
20	590-0250-0	Hook, J	2
21	597-0119-1	Operator Manual Holder	1
22	591-0021-0	Nut, Guard (Not Shown)	1
23	500-0678-0	Spring Tension 3.62 x .85" OD (Not Shown)	1
24	595-0019-0	Bracket Guard (Not Shown)	1

Water Motor and Plumbing



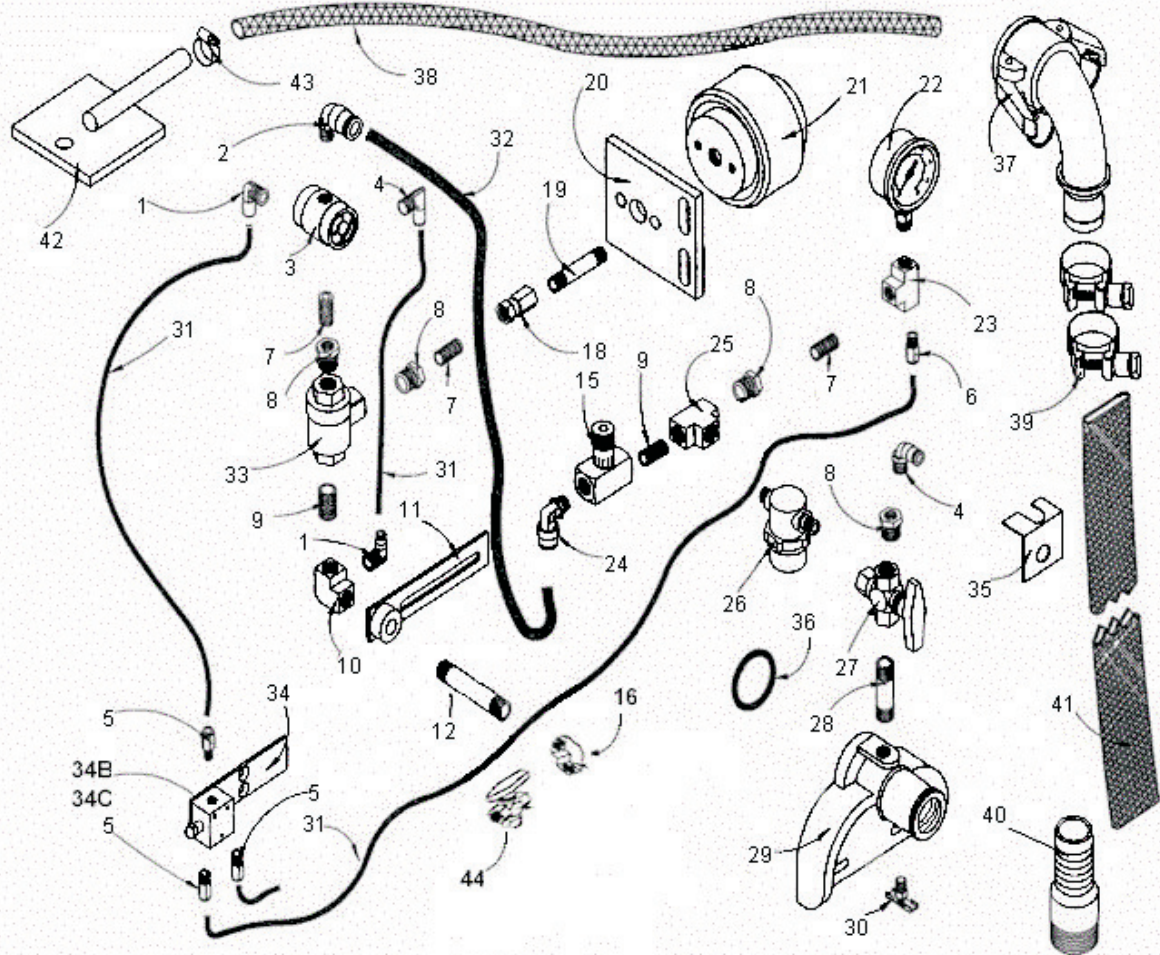
Water Motor and Plumbing				
No.	Part Number	Description	Qty.	
1	525-4915-0	FTG, TB 90 1/8MNPT x 1/4 Tube	2	
2	525-4917-5	FTG, TB 90 1/4MNPT x 1/2" Tube	1	
3	586-0978-6	Valve, Humphrey 250 N.O.	1	
4	525-4915-1	FTG, TB 90 1/4MNPT x 1/4 Tube	2	
5	525-4917-0	FTG, TB ST 1/8MNPT x 1/4 Tube	3	
6	525-4917-2	FTG, TB ST 1/4MNPT x 1/4 Tube	1	
7	525-3214-1	Nipple, 1/4 x Close Brass Pipe	3	
8	525-0616-1	Bushing, 3/8 x 1/4 Brass Red.	4	
9	525-0619-1	Nipple, 3/8" x 1-1/2"	1	
10	586-0870-1	Elbow, 3/8 x 90 Deg. Brass (Drilled & Tap)	1	
11	586-0868-4	Pipe Bracket	1	
12	525-1395-5	Nipple, 3/8 x 4 Brass	1	
15	586-0978-5	Valve, 3/8" Needle	1	
16	500-0003-0	Elbow, Male 3/8"		

Water Motor and Plumbing



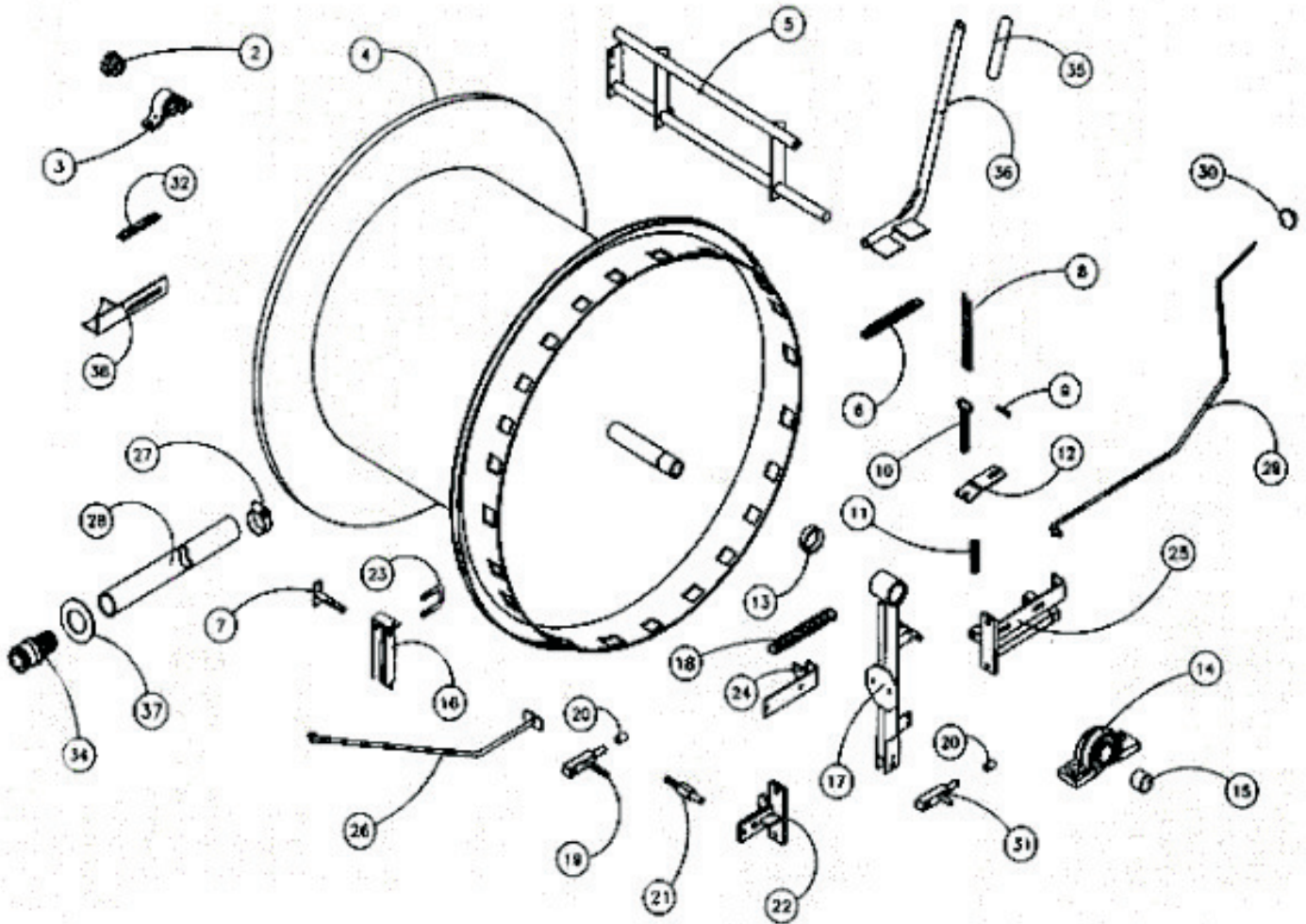
18	586-0988-0	Adptr Union 4F x 4F 1/4"	1
19	525-1397-2	Nipple, 1/4 x 2.5 Brass	1
20	586-0784-4	Plate, Bellows	1
21	586-0794-2	Bellows	1
22	586-0675-0	Gauge, 0-300 Water Pressure	1
23	525-0263-2	Tee, 1/4 Brass Pipe	1
24	525-4917-4	FTG, TB 90 3/8MNPT x 1/2" Tube	1
25	525-0263-1	Tee, 3/8 Brass Pipe	1
26	586-0989-3	Filter, Vik Lo Pr 3/8 NPT 40 Mesh	1
27	586-0757-1	Valve, 3 Way x 3/8 Brass	1
28	525-0264-1	Nipple, 3/8 x 3	1
29	500-0565-0	Fitting, Water Entry	1
30	525-3225-0	Valve, 1/8 Drain	1

Water Motor and Plumbing



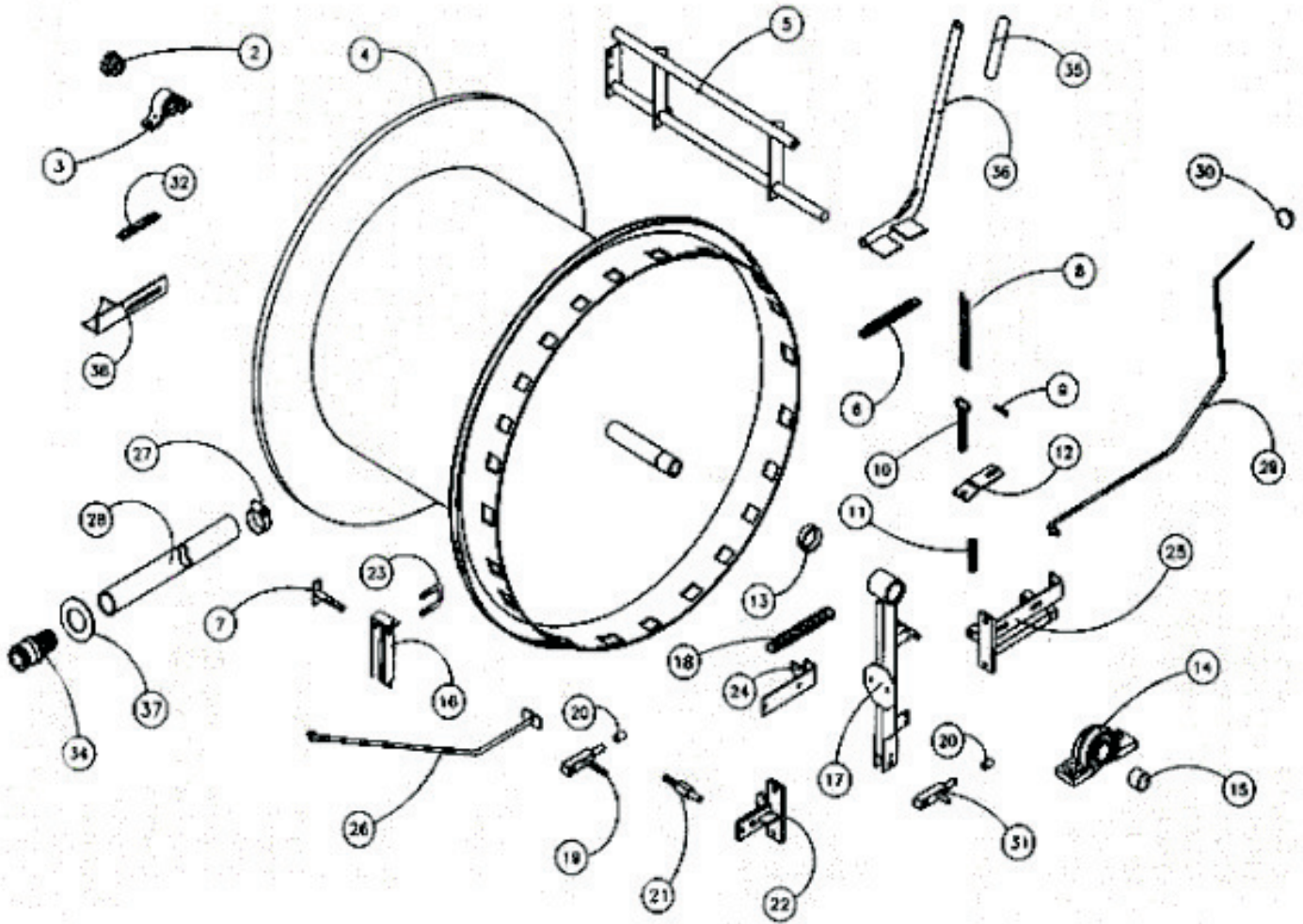
	31	252-4939-0	Tube, 1/4 Nylon Control	Ft.	4
	32	252-4939-3	Tube, 1/2" OD Nylon Control	Ft.	1
	33	589-0068-0	Valve, Cam 3/8 Quick Exhaust		1
	34A	586-0869-1	Plate		1
		594-0153-0	Valve, w/Spool, Stud & Nuts (Contains Items Noted *)		1
*	34B	425-4845-3	Body, Valve MA-33		1
*	34C	425-4845-0	Spool, Valve Chr. Pltd. 1.687		1
	35	590-0278-0	Plate, Valve Indicator		1
	36	586-0991-0	O-Ring 1-7/8 x 1-1/2 x 3/16"		1
	37	586-0802-4	CL Camlock, 90 Degree 1-1/2		
	38A	586-0994-2	Hose Reinforced Vinyl 1/2"	Ft.	15
	38B	560-4845-0	Clamp, Screw 7/32 x 5/8 (Not Shown)		3
	39	550-4898-5	Screw, Set HLF Dog 3/8-16 x 1 (Not Shown)		2
	40	586-0806-0	Nipple, 1-1/2" Plated King		1
	41	586-0801-0	Hose, IRR Supply 1-1/2"	Ft.	15
	42	586-0922-0	Anchor, Discharge Hose		1
	43	030-1652-4	Clamp, 12-22 Hose		2
	44	500-0002-1	Valve, 3/8 Hi-Lo Range 9/64		1
	45	500-0573-0	Valve, Membrane 1-1/2" NPT (Not Shown)		1
	46A	596-0372-0	Valve, 1/4" Turn 1/8FNPT (Not Shown)		1
	46B	500-0680-0	FTG, TB ST 1/8 FNPT x 1/4 Tube (Not Shown)		1
	47	525-4784-2	BSHNG, RDCNG BR 1/4 x 1/8 (Not Shown)		1

Spool and Drive Assembly



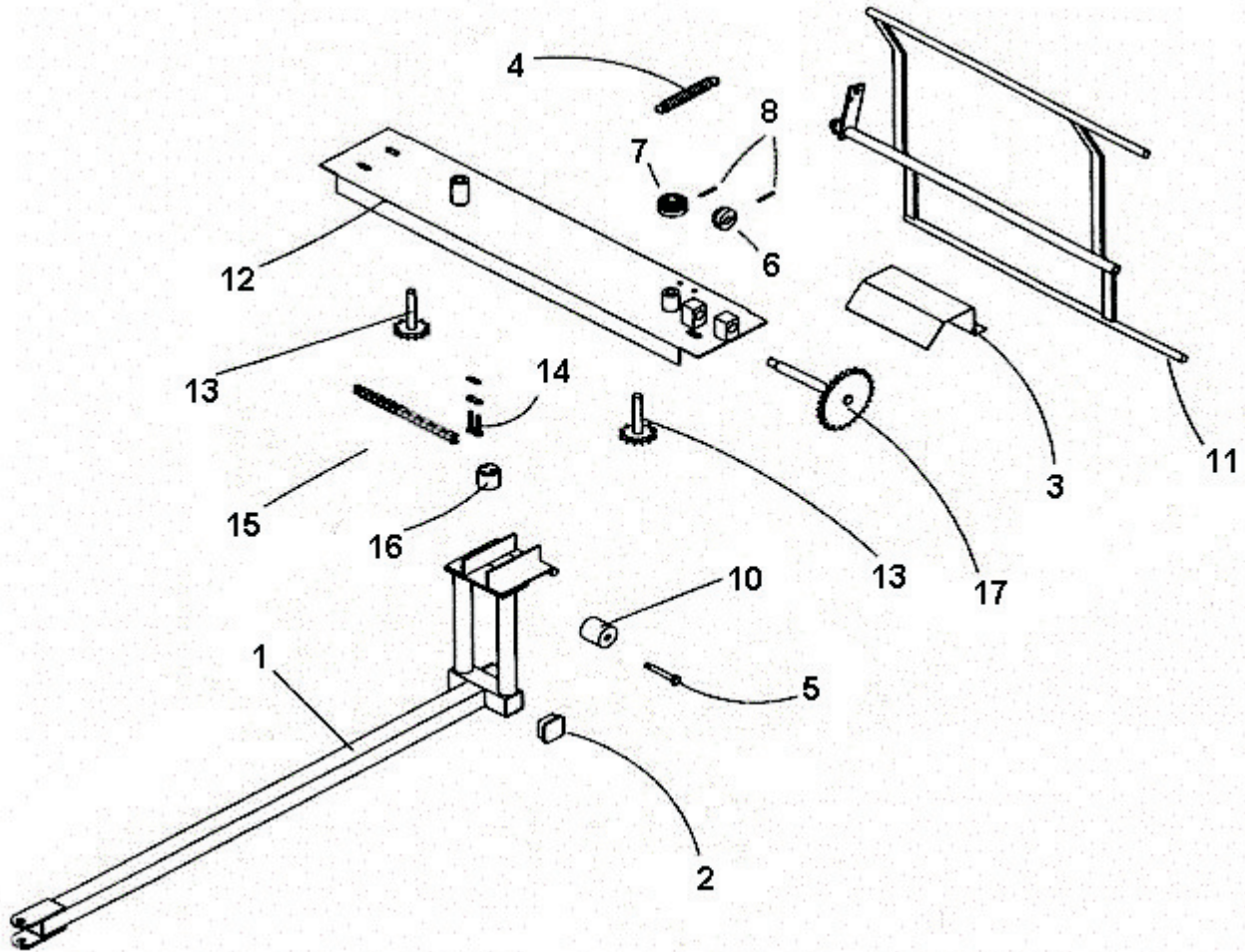
Spool and Drive Assembly				
No.	Part Number	Description		Qty.
2	880-4932-2	Sprocket, 40 B-10, 5/8 Bore W/KW & SS		1
3	586-0983-0	Brng, Pillow Block 1"		1
4	586-0896-0	Spool		1
5	587-0142-3	Tube Rider		1
6	450-1633-0	Spring		1
7a	588-0502-0	Spindle, Brake Take Up		1
8	587-0167-0	Belting, 5 Ply x 1" Neoprene	Ft.	5.9
9	558-4846-3	Clevis Pin 1/4" x 1-1/4 OAL		1
10	587-0162-2	Tensioner, Brake Band		1
11	450-4858-0	Spring		1
12	587-0160-3	Bracket, Brake Tensioner Mounting		1
13	586-0993-0	Collar, 1-1/2" Set		1
14	586-0982-0	Bearing, 1-12" Pillow Block		1
15	588-0167-0	Sleeve, Stainless Steel		1
16	588-0505-0	Anchor, Rear Brake		1
17	586-0894-4	Arm, Ratchet Drive		1
19	586-0748-2	Pawl, Anti-Return		1
21	586-0751-2	Stud, Pawl Support		1

Spool and Drive Assembly



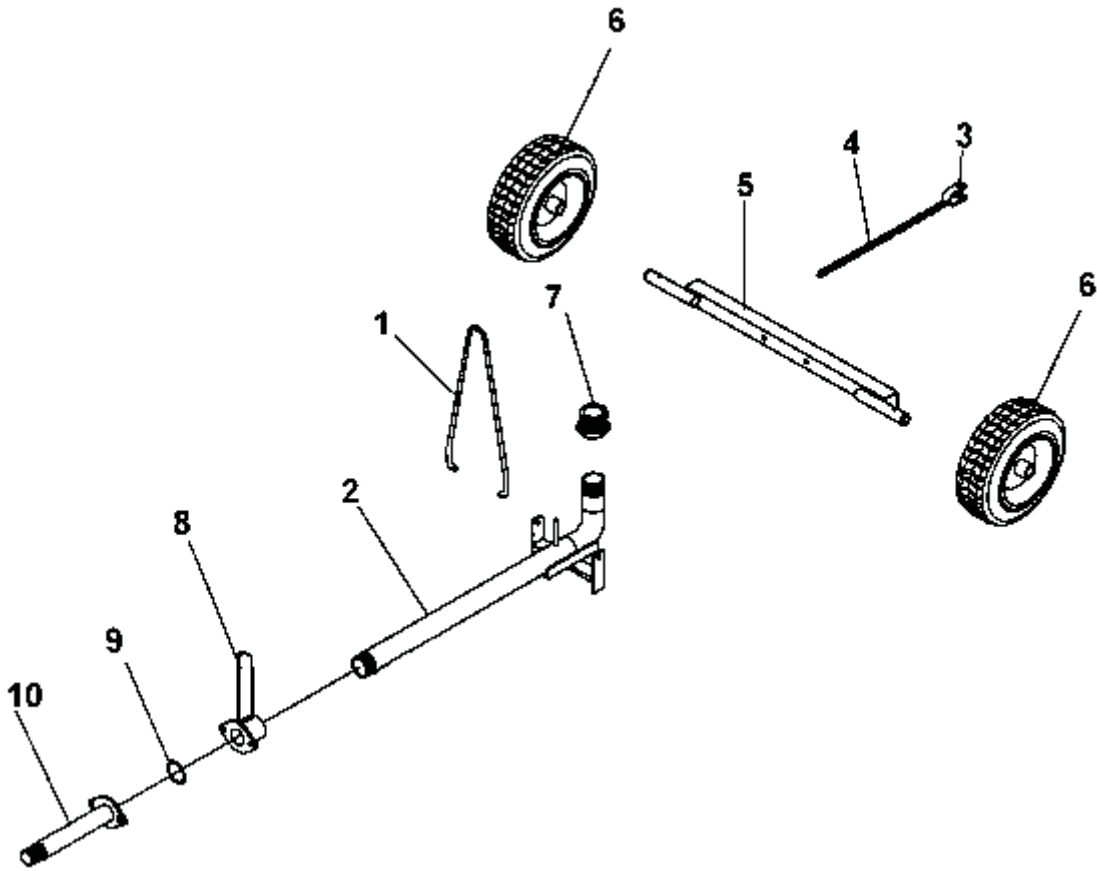
22	593-0288-0	Mount, Pawl Stud		1
23	587-0040-0	Bolt, U 3/8" x 1-1/2" x 1-1/2" x 2-1/4" Long		2
24	586-0834-7	Striker, Adjustable Pilot Valve		1
25	593-0291-0	Bracket, Bellows Over-Travel Stop		1
26	586-0832-5	Rod, Shut Off Control		1
27	030-1911-9	Supra, Clamp, 40mm-43mm		2
29	586-0818-0	Rod, Pawl Disengage		1
30	302-4915-0	Knob, Ball		1
31	586-0748-0	Pawl, Ratchet Drive		1
32	587-0128-1	Chain, Roller (112 Roller)		
34	597-0229-0	Camlock, F 1-1/2 w/threads		1
35	587-0252-0	Grip, .812 x 4-1/2 Black Mocap Hand		1
36	587-0251-0	Handle, Rewind		1
37	553-0255-2	Machine Bushing, 3-1/8" x 1-5/8" x 10 Ga.		1
38	590-0262-0	Idler, Levelwind Chain		1
	302-4844-0	Link, #40 Roller Chain Off-Set (Not Shown)		1
	302-4845-0	Link, #40 Roller Chain Connecting (Not Shown)		1
40	594-0277-0	Retainer (Not Shown)		1
41	594-0181-0	Mount, Spring (Not Shown)		1

Levelwind Assembly



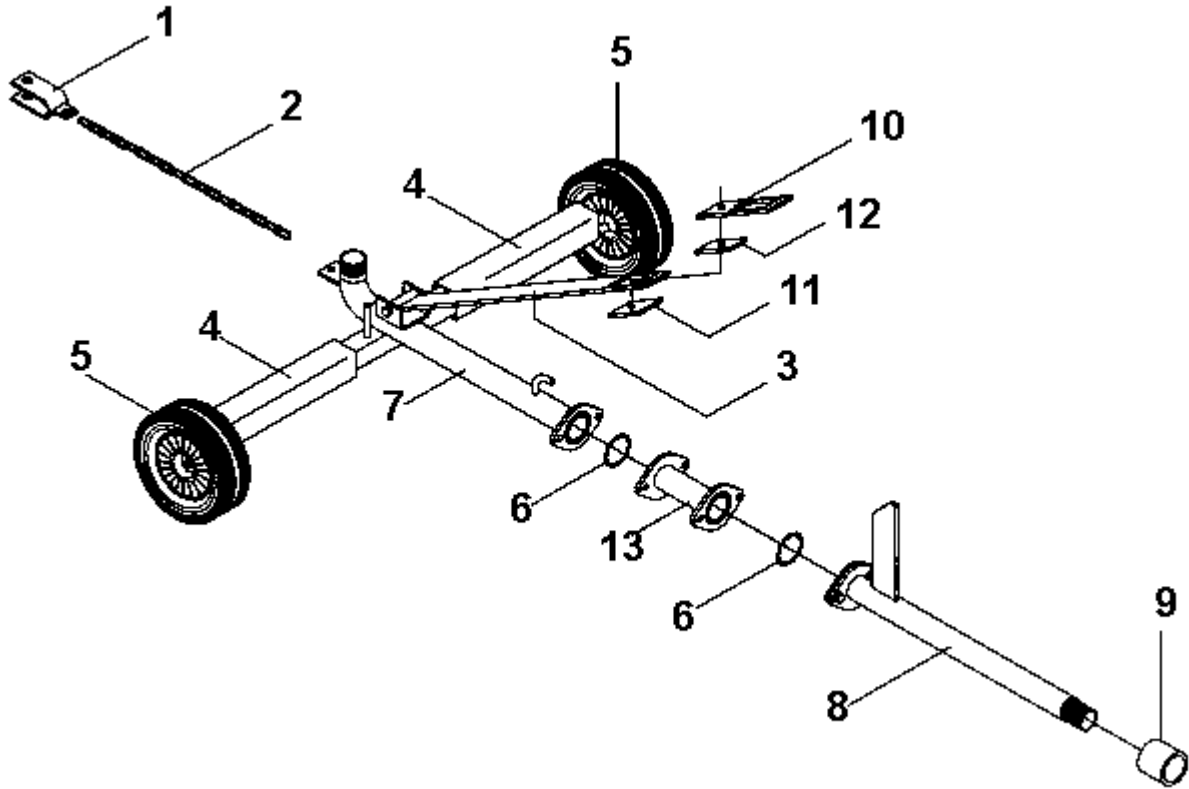
Levelwind Assembly				
No.	Part Number	Description	Qty.	
1	586-0887-0	Arm, Hoseguide	1	
2	586-0992-0	Cap, 1-1/2" Square Tube	2	
3	586-0808-0	Guard, Bevel Gear	1	
4	587-0248-0	Spring, 3/4 x 1-3/4 Tension	1	
6	500-0067-0	Pinion Gear HB #020012	1	
7	500-0068-0	Bevel Gear HB #020026	1	
8	500-0069-0	Pin, Grove HB #009008	1	
9	500-0565-0	Entry Fitting B-140 (Not Shown)	1	
10	587-0018-0	Roller, Hose Guide	1	
11	593-0221-0	Bar, Safety/Shut-Off	1	
12	593-0222-0	Frame, Levelwind	1	
13	586-0665-0	Shaft/ Sprocket, Levelwind Drive	2	
14	586-0972-0	Link, #40 Double Roller Chain Repair	1	
15	587-0129-0	Chain, #40 Roller (80 Roller)	Ft.	
16	586-0876-0	Lug, Levelwind Carrier Drive	1	
17	586-0742-6	Shaft/Sprocket, Levelwind Input	1	
18	425-4845-0	Valve, MA 33 NKL-ALM Spool (Not Shown)	1	

Sprinkler Cart Assembly



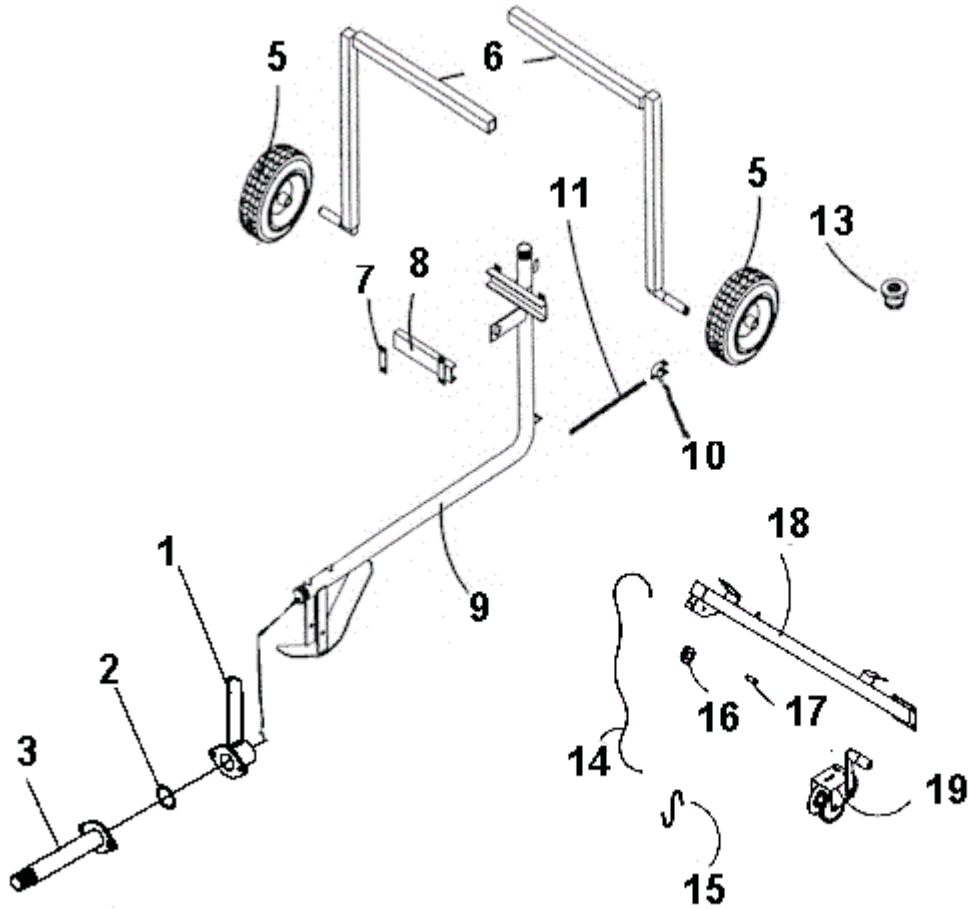
Sprinkler Cart Assembly				
No.	Part Number	Description		Qty.
1	587-0004-5	Bail, Lift		1
2		Body, Guncart		1
3	596-0233-0	Clevis		1
4	850-4059-0	Chain	Ft.	3
5	594-0100-0	Axle, Guncart		1
6	586-0811-0	Wheel/Tire, 410-350 x 4 W/1" Bore		1
7	585-0405-0	Bushing, Reducing Galvanized 2" to 1-1/2"		1
8	500-0558-0	Stop Cart		1
9	500-0679-0	O-Ring 1.984" ID x .139" CS #226		1
10a		Tube End 1.3"		1
10b		Tube End 1.4"		1

Sprinkler Cart Assembly



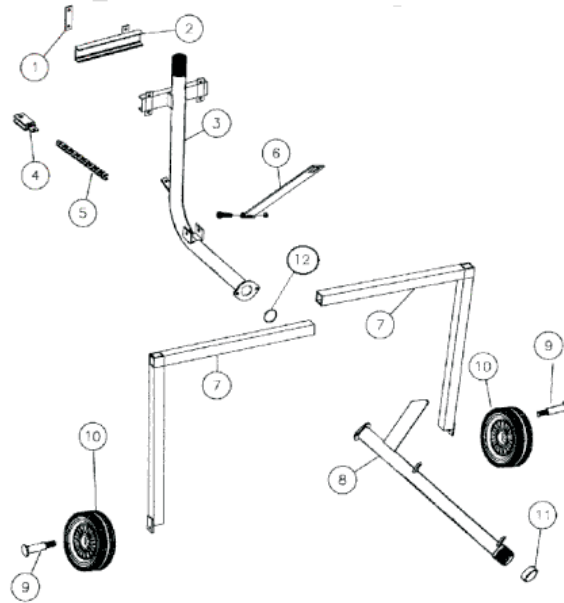
Sprinkler Cart Assembly				
No.	Part Number	Description		Qty.
1	596-0233-0	Clevis, Pull Chain		1
2	850-4059-0	Chain, 3/16 Proof Coil Plated	Ft.	3
3	500-0792-2	Lift Bail		1
4	501-0068-0	Leg		2
5	587-0000-3	Wheel, 8 x 1-7/16 x 1/2 Bore		2
6	500-0679-0	O-Ring 1.984" ID x .139 #226		2
7	500-0517-0	Body		1
8a	500-0557-1	Tube End (1.4 Tube)		1
8b	500-0557-2	Tube End (1.3 Tube)		1
8a	591-0061-3	Sleeve (1.4 Tube)		1
9b	591-0061-0	Sleeve (1.3 Tube)		1
10	500-0791-8	Extension, Lift Bail		1
11	501-0600-0	Spacer, Lift Bail		1
12	501-0601-0	Spacer, Lift Bail		1
13	501-0603-0	Extension, Guncart		1

Sprinkler High Cart Assembly



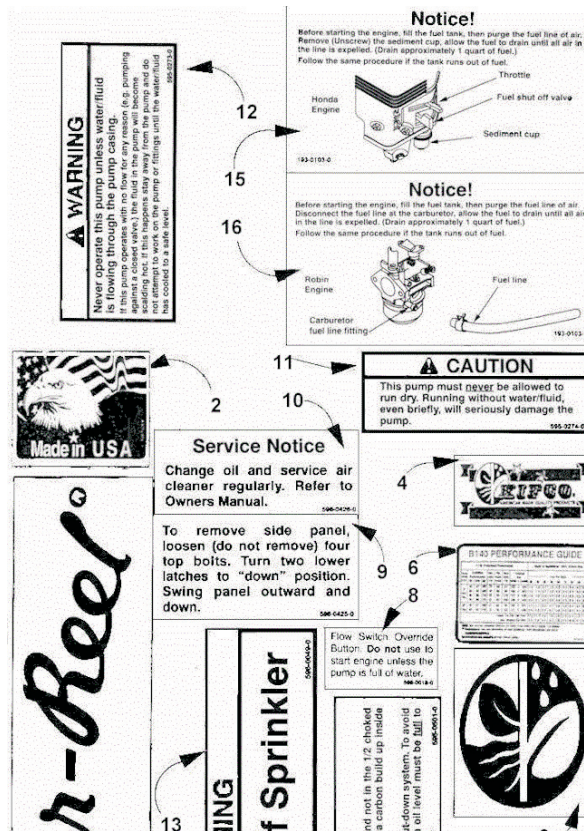
Sprinkler High Cart Assembly				
No.	Part Number	Description		Qty.
1	500-0558-0	Stop Cart		1
2	500-0679-0	O-Ring 1.984" ID x .139" CS		1
3a		Tube End 1.3"		1
3b		Tube End 1.4"		1
5	586-0811-0	Wheel and Tire 4:1 x 3:5 x 4 1B2P		2
6	586-0999-4	Axle, Guncart 160H		2
7	587-0082-0	Strap		1
8	587-0083-0	Clamp		1
9	599-0446-0	Body, Guncart B-140		1
10	596-0233-0	Clevis, Pull Chain		1
11	850-4059-0	Chain, 3/16 Proof Coil PLTP	Ft.	3
12	553-0628-0	Bushing, Machine 1-1/2 x 1 x 18 Ga. (Not Shown)		4
13	585-0405-0	Bushing, RDCNG GLV 2 x 1-1/2		2
14	750-4844-6	Rope, Nylon 3/8 Solid Braid	Ft.	6
15	599-0496-0	S Hook 2" SS 1/4" Wire Siz		1
16	593-0334-0	Pulley, WRP 3/8 x 2 x 1/2B UHMW P		1
17	558-1873-0	Pin, Clevis 1/2 x 1-27/64 OAL		1
18	586-0848-3	Hanger, Guncart		1
19	400-4855-3	Winch, Fulton T-600		1

Sprinkler High Cart Assembly



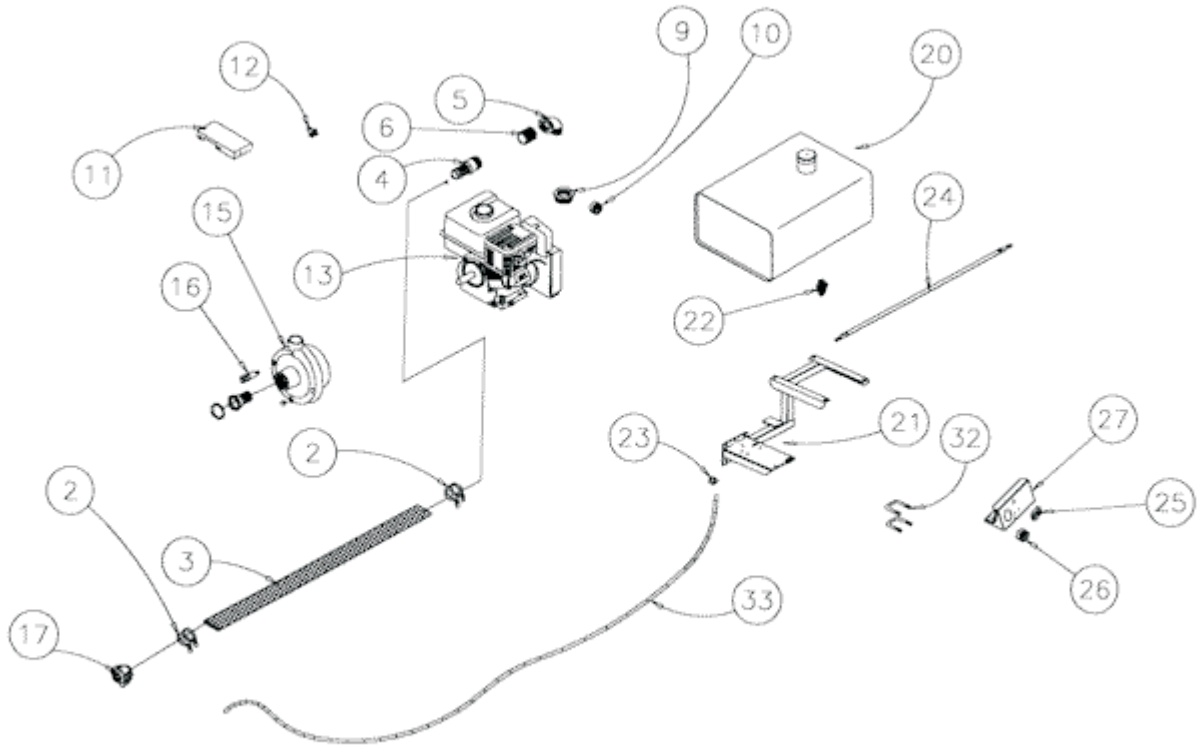
Sprinkler High Cart Assembly				
No.	Part Number	Description		Qty.
1	587-0082-0	Strap		1
2	587-0083-0	Clamp		1
3a	500-0517-2	Body (130/140)		1
3b	500-0517-1	Body (180/200/210)		1
4	596-0233-0	Clevis, Pull Chain		1
5	850-4059-0	Chain, 3/16 Proof Coil Plated	Ft.	3
6	500-0792-2	Lift Bail		1
7a	501-0078-0	Leg (130/140)		2
7b	500-0861-0	Leg, Right (not as shown) (180/200/210)		1
7c	500-0861-1	Leg, Left (not as shown) (180/200/210)		1
8a	500-0557-2	Tube End (1.3 Tube)		1
8b	500-0557-1	Tube End (1.4 Tube)		1
8c	500-0557-3	Tube End (1.8 Tube)		1
8d	500-0557-4	Tube End (2.0 Tube)		1
8e	500-0557-5	Tube End (2.1 Tube)		1
9	587-0001-3	Bolt, Shoulder 1-1/2" (used on 130/140 only)		2
10a	587-0000-3	Wheel 8 x 1-7/16 x 1/2 Bore		2
10b	586-0811-0	Wheel 4:1 x 3:5 x 4 (180/200/210) (not as shown)		2
11a	591-0061-3	Sleeve (1.4 Tube)		1
11b	591-0061-0	Sleeve (1.3 Tube)		1
11c	591-0061-2	Sleeve (1.8 Tube)		1
11d	591-0061-4	Sleeve (2.0 Tube)		1
11e	500-0789-0	Sleeve (2.1 Tube)		1
12	500-0679-0	O-Ring, 1.984" ID x .139 #226		1
13	400-4855-3	Winch, Fulton T-600 (Not Shown)		1

Decal Group



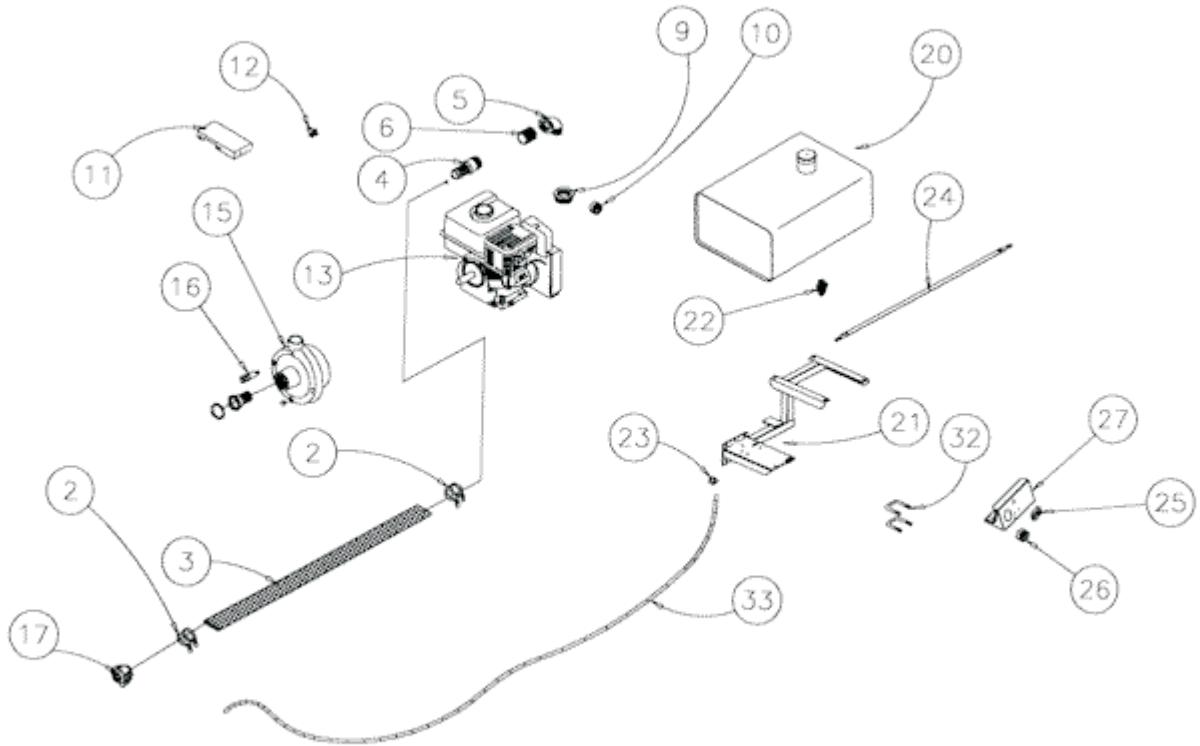
No.	Part Number	Description	Qty.
		Decal Group	
1	586-0743-0	Decal, Water-Reel	8
2	586-0821-1	Decal, Made In USA	1
3	585-0299-2	Decal, Logo, 6" Round	1
4	586-0821-0	Decal, Kifco	1
5	595-0501-0	Decal, Important Choke	1
6	599-0285-1	Decal, 140 Performance Guide	1
7	587-0014-0	Decal, Page	1
8	596-0018-0	Decal, Flow Switch Override Button	1
9	596-0425-0	Decal, Remove Side Panel	1
10	596-0426-0	Decal, Service Notice Change Oil	1
11	595-0274-0	Decal, Caution Pump Run Dry	1
12	595-0273-0	Decal, Warning Operate Pump	1
13	596-0049-0	Decal, Warning Stand Clear Sprinkler	1
14	596-0044-0	Decal, Valve	1
15	193-0103-0	Decal, Notice Fill Fuel - Honda Engine	1
16	193-0103-1	Decal, Notice Fill Fuel - Robin Engine	1

Booster Pump



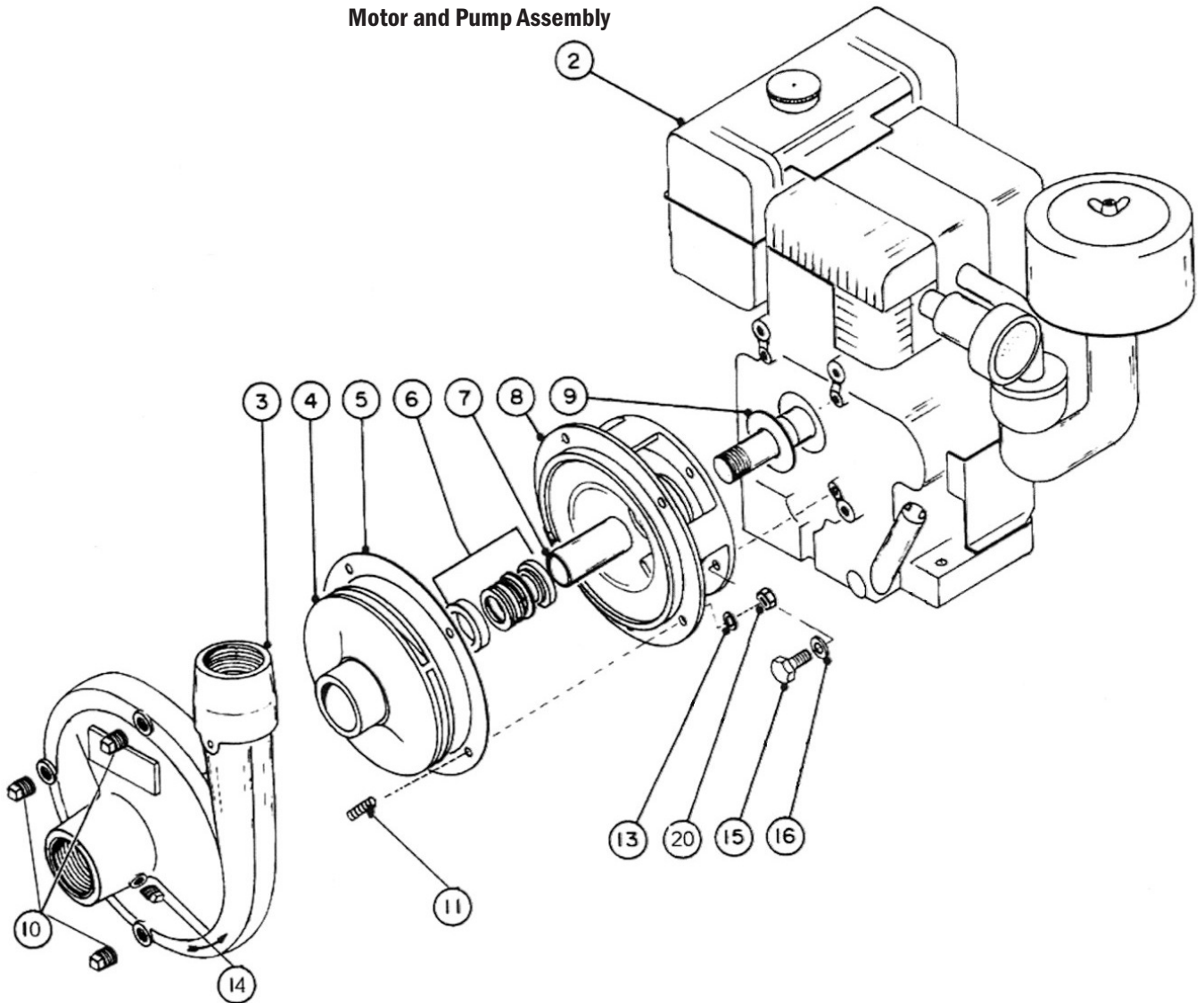
Booster Pump				
No.	Part Number	Description		Qty.
1	586-0805-2	Cmlk, C FE 1.5 x 1.5 Barb		1
2	030-1914-3	Supra Clamp 51mm-55mm		1
3	586-0801-0	Hose, 1-1/2"	Ft.	2.5
4	586-0806-0	Nppl. King 1-1/2		1
5	526-5274-0	Elbow, Street 1-1/2" x 90 Deg.		1
6	525-0898-1	Nipple, Close BR 1/8		1
9	585-0405-0	Bushing, Reducing 2 x 1-1/2		1
10	586-0674-2	Gauge, Presser Rear Mt. 160		1
11A	598-0140-0	Shield, Robin Choke (Used with Robin Engine)		1
11B	597-0166-1	Engine Cover Honda 6.5 & 5.5 (Used with Honda Engine)		1
12	594-0423-1	Switch, Override Normal Closed		1
13A	598-0141-0	Engine, 6 HP Robin for Pump		1
13B	592-0321-0	Pump and Engine MNRC H 5.5 HP		1
15	599-0068-0	Pump ACGF-5SDH-LP No Engine		1
16	595-0669-0	Valve, Modified 1/4" Thermo		1
17	586-0803-0	Cmlk, "F" Ma 1-1/2 x 1-1/2"		1
20	584-0693-0	Tank, Fuel and Cap 5.3 Gal		1

Booster Pump



21	500-0546-0	Gas Tank Mt. B-140		1
22	277-4919-0	Filter Glass Bowl Fuel		1
23A	596-0346-0	Clamp, Spring .360 OD x .31 - (Robin Engine)		1
24	500-0550-0	Tank Strap		1
25	500-0571-0	Tach/Hour Meter		1
26	500-0572-0	Gauge, Murphy 20P 150		1
27	500-0638-0	Gauge Mt.		1
28	500-0650-0	Wire Harness 140		1
29	593-0034-0	Clamp, Double Tube (Not Shown)		1
30	594-0297-0	Clamp, Loom 1/2 Remove Jack (Not Shown)		1
31	597-0229-0	Camlock, F 1-1/2 w/threads (Not Shown)		1
32	587-0040-0	Bolt, U Sq. 3/8 x 1-1/2 x 2-1/4		2
33A	584-0695-1	Hose, Gas 1/4 x 27/64 - (Robin Engine)		
33B	584-0695-0	Hose, Gas 3/16 x 23/64 - (Honda Engine)		

Motor and Pump Assembly



Motor and Pump Assembly			
No.	Part Number	Description	Qty.
1	594-0255-0	Handle, (Irregular Shape)	1
2A	594-0256-0	Engine, Honda 5.5 HP	1
2B	598-8041-0	Engine, 6HP Robin for Pump	1
3	594-0257-0	Casing 1-1/2 x 2	1
4	595-0416-0	Impeller, 6.1 Dia. 5/8" Tread	1
5	594-0252-0	O-Ring	1
6	594-0253-0	Mechanical Seal 3/4" ID	1
7	595-0417-0	Sleeve 3/4 OD 1.6" Long	1
8	594-0260-0	Adapter	1
9	594-0250-0	Flinger 1-1/4 x 3/4 x 1/16 Thick	1
10		Drain Plug, 1/4" NPT	1
11A	594-0261-0	Stud, 3/8 UNC x 1-1/2"	2
11B	594-0262-0	Stud, 3/8 UNC x 1-1/4"	2
13		Washer, Lock 3/8"	4
14		Drain Plug, 1/8" NPT	1
15		Bolt, 5/16 UNF x 3/4	4
16	596-0001-0	Washer, Bonded Seal Washer	4
20		Nut, 3/8" UNC	4