



707 S. Schrader Ave.  
P.O. Box 290  
Havana, IL 62644  
USA  
Phone: 309.543.4425  
Fax: 309.543.4945  
E-mail:  
parts@kifco.com

## Water-Reel<sup>TM</sup> Irrigation

### PARTS MANUAL

## B-180, B-200 & B-210

S/N 340,000 - 359,999

updated page 8 Rc 11/28/05

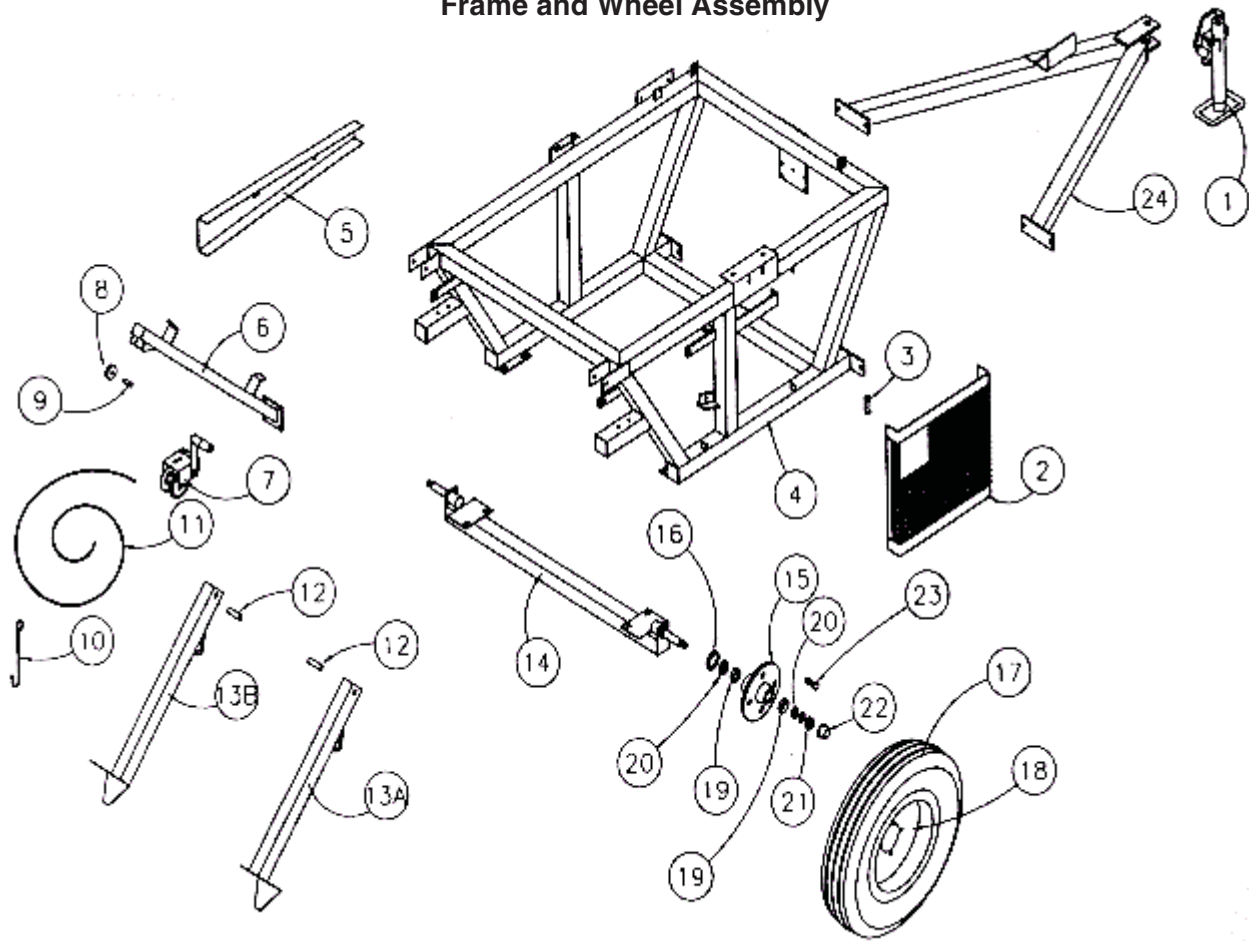
<b>Assembly</b>	<b>Page</b>
Frame and Wheel Assembly	2,3
Water Entry Plumbing	4,5
Water Motor Plumbing	6,7
Spool and Drive Assembly	8,9,10
Levelwind Assembly	11
Sprinkler Cart Assembly	12,13
PTO Kit	14
Decal Group	15
Booster Pump	16
Robin Engine Parts	17
Honda Engine Parts	18,19

#### Notes:

For Parts That Are Described As "Left" Or "Right" The Water Inlet Side Of The Machine Is Considered The Right Side.

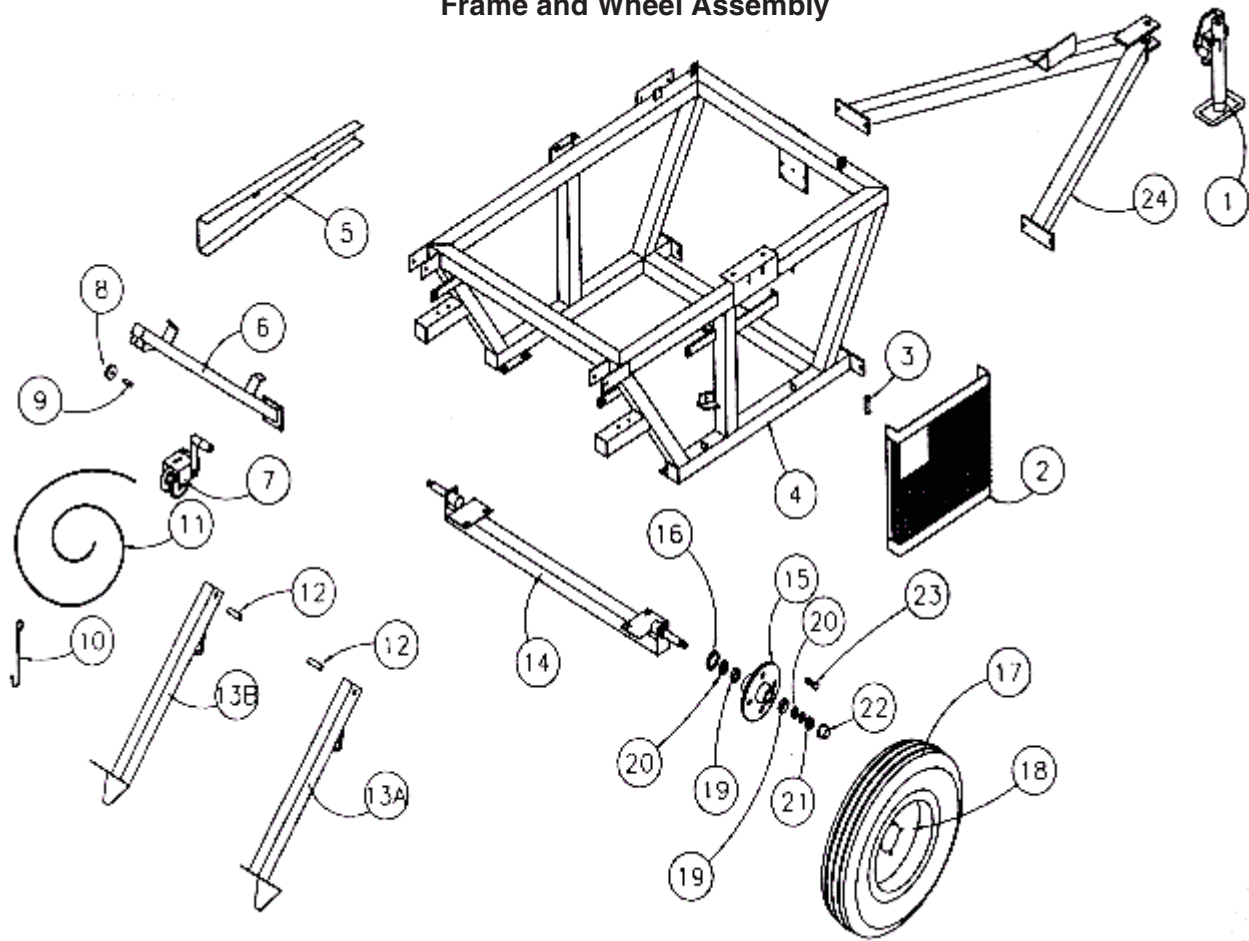
Items Such As Common Fasteners, Grease Fitting, And Other Small Parts Easy To Acquire Locally Are Not Listed.

## Frame and Wheel Assembly



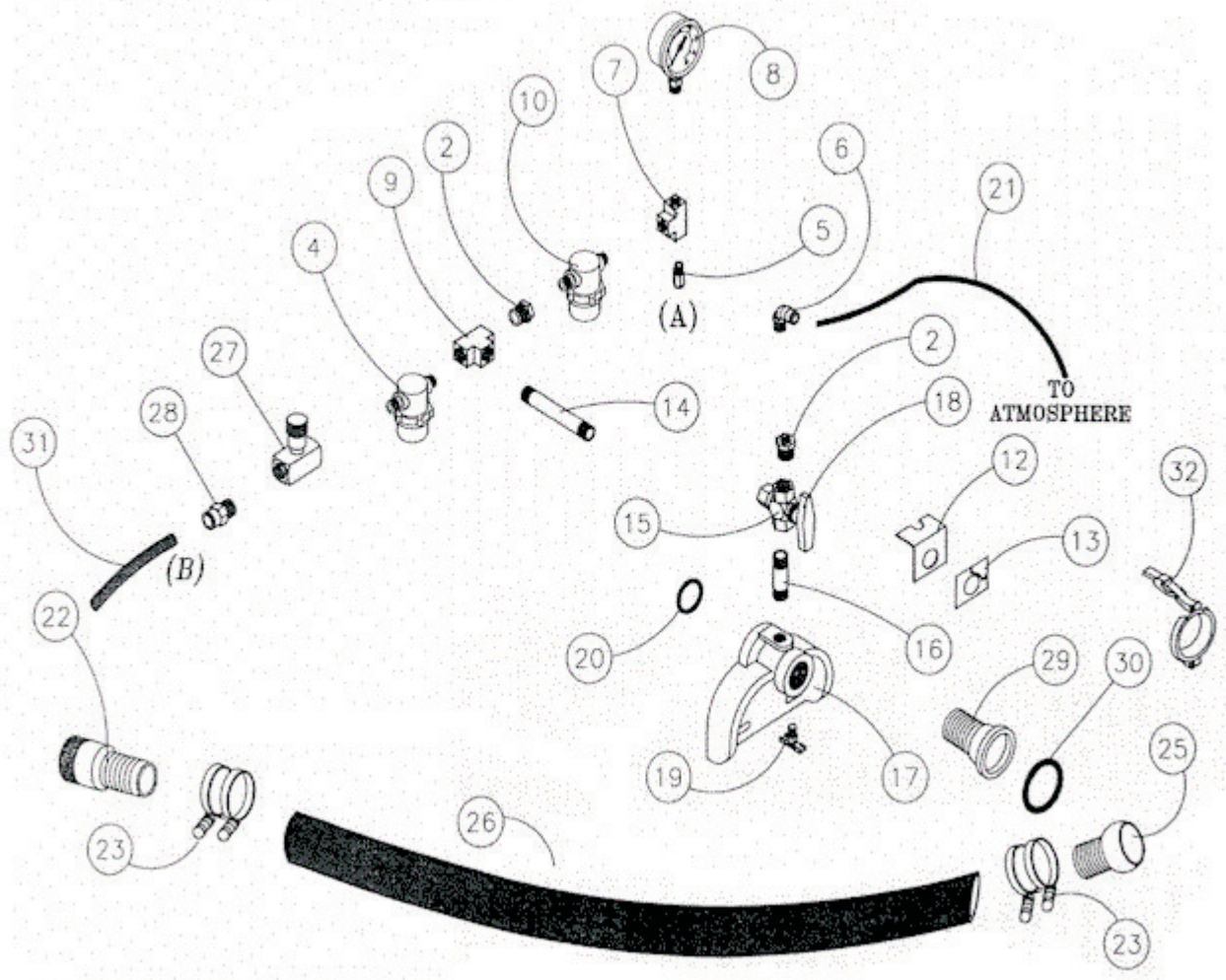
Frame and Wheel Assembly				
No.	Part Number	Description		Qty.
1A	592-0058-0	Jack, Screw 2000 Lbs		1
1B	593-0149-0	Ring, Retaining For Jack Mt (Not Shown)		1
2	592-0050-0	Guard, Water Motor		1
3	592-0092-0	Latch, Guard		1
4	599-0023-0	Main Frame		1
5	592-0010-0	Shield, Levelwind Chain		1
6A	586-0848-3	hanger, Sprinkler Cart (For 1/4" Rope)		1
6B	587-0040-2	U-Bolt, 2-1/2 x 3/8 (Not Shown)		2
7	400-4855-3	Winch, Fulton T-600		1
8	593-0334-0	(Rope) Pulley 3/8"		1
9	558-1873-0	Pin, Clevis 1/2 x 1-27/64 OAL		1
10	590-0280-0	Hook		1
11A	750-4844-6	Rope, Nylon 3/8"	Ft.	6
11B	593-0258-0	Sleeve, Oval 3/8" Rope (not Shown)		1
12	590-0216-1	Bushing, .75 x .4 x 2.6		2

## Frame and Wheel Assembly



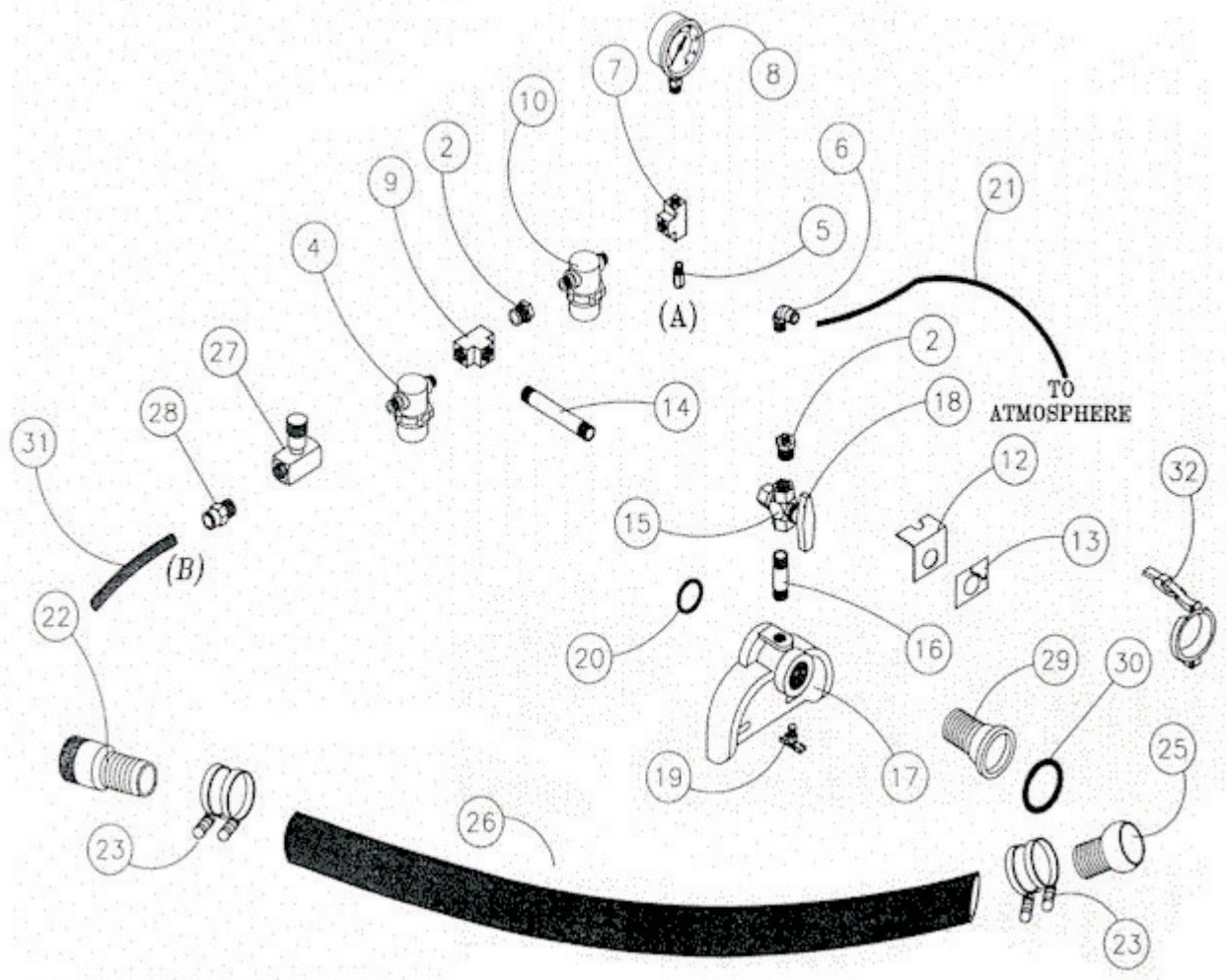
13A	592-0008-0	Leg, Stabilizer Right		1
13B	592-0008-1	Leg, Stabilizer Left		1
14	592-0089-0	Axle		1
15	588-0356-4	Hub		2
16	588-0356-5	Seal, Grease		2
17	588-0248-0	Tire, 4.8 x 12 2Ply		2
18	588-0249-0	Wheel, 4 Bolt 4" Hub Circle 4 x 12		2
19	588-0356-6	Race, Wilton 910250		4
20	588-0356-8	Bearing, Timken L-44649		4
21	588-0356-2	Nut, Wilton 912953		2
22	588-0356-1	Cap, Hub Wilton 909981		2
23	588-0356-0	Bolt, Lug Wilton 913535		8
24	599-0020-0	Tongue, Base B-50		1

## Water Entry Plumbing



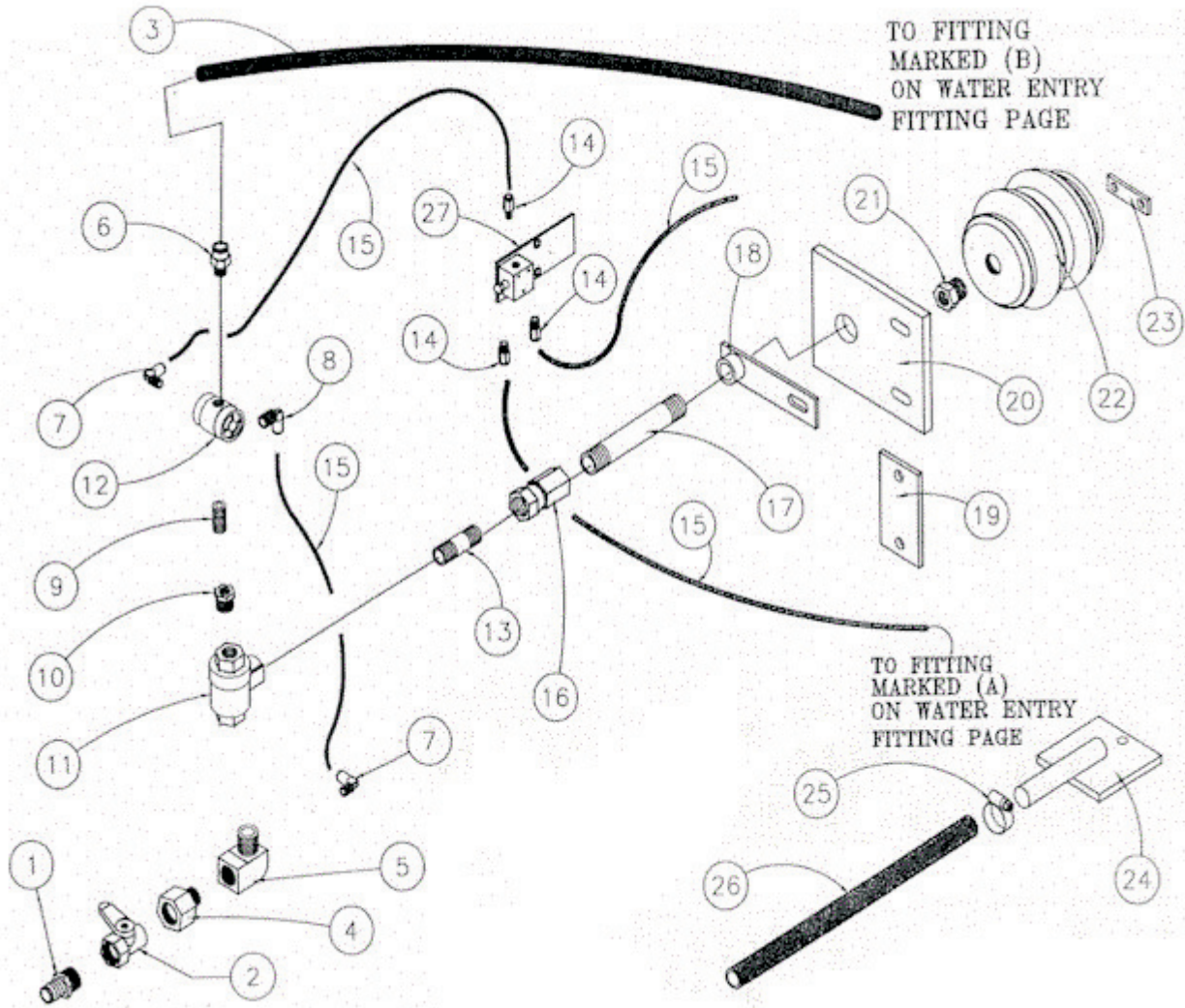
Water Entry Plumbing				
No.	Part Number	Description	Qty.	
	2	Bushing, Reducing Brass 3/8" x 1/4"	2	
	4	Filter, (Ron-Vik Lo Pro 3/8")	1	
	5	Fitting, Straight 1/4" Male NPT x 1/4" OD Tube	1	
	6	Fitting, 90 Deg. 1/4" Male NPT x 1/4" OD Tube	2	
	7	Tee Brass 1/4"	1	
	8	Gauge Press 0-300	1	
	9	Tee, Brass 3/8"	1	
	10	Filter, (Ron-Vik Lo Pro 1/4")	1	
	12	Plate, Valve Indicator	1	
	13	Decal, Valve On/Off	1	
	14	Nipple, Brass 3/8 x 5	1	
	15	Valve, On-Off (3 Way Brass Ball 3/8 x 90 Deg)	1	
	16	Nipple, Brass 3/8 x 2	1	
	17	Fitting, Entry B-50	1	
	18	Handle 586-0747-1	1	

## Water Entry Plumbing



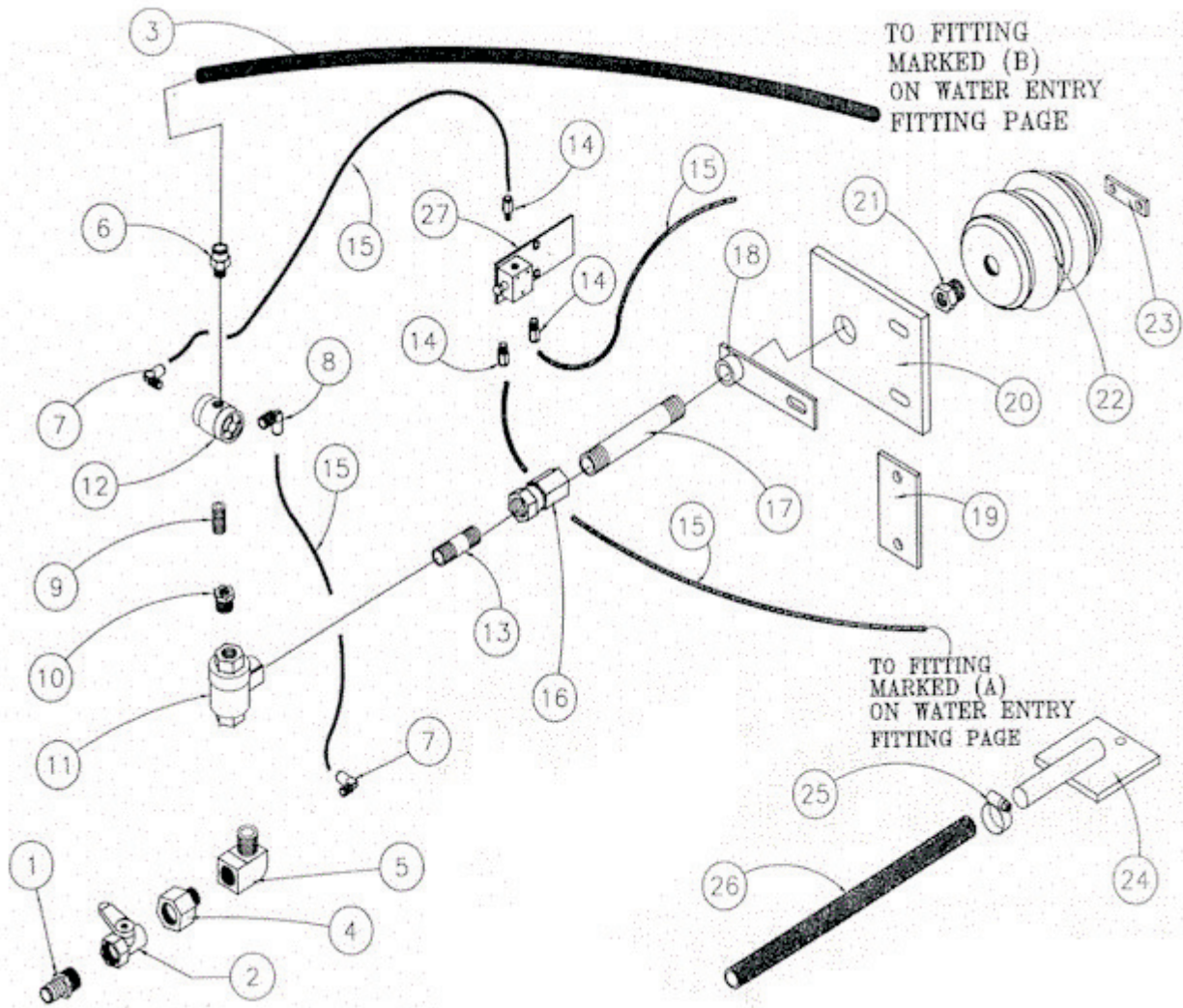
19	525-3225-0	Cock, Drain		1
20	586-0991-7	O-Ring, 2-5/8 x 2-1/4 x 3/16		1
21	252-4939-0	Tube, Synflex 1/4"	Ft.	8.5
22	586-0806-1	Nipple, Plated 2" King		1
23	030-1915-1	Clamp, Hose 55-59		4
25	599-0135-0	Ball Fitting 2"		1
26	586-0801-1	Hose, 2"	Ft.	15
27	586-0978-5	Valve, Needle 3/8"		1
28	525-4917-6	Fitting Straight 3/8 Male NPT x 1/2" OD Tube		1
29	599-0136-0	Socket, Entry 2"		1
30	588-0021-3	O-Ring 2: 3-5/32 OD x .34"		1
31	252-4939-3	Tube, Synflex 1/2"	Ft.	1.23
32	588-0021-1	Lever-Loc Ring 2"		1

## Water Motor Plumbing



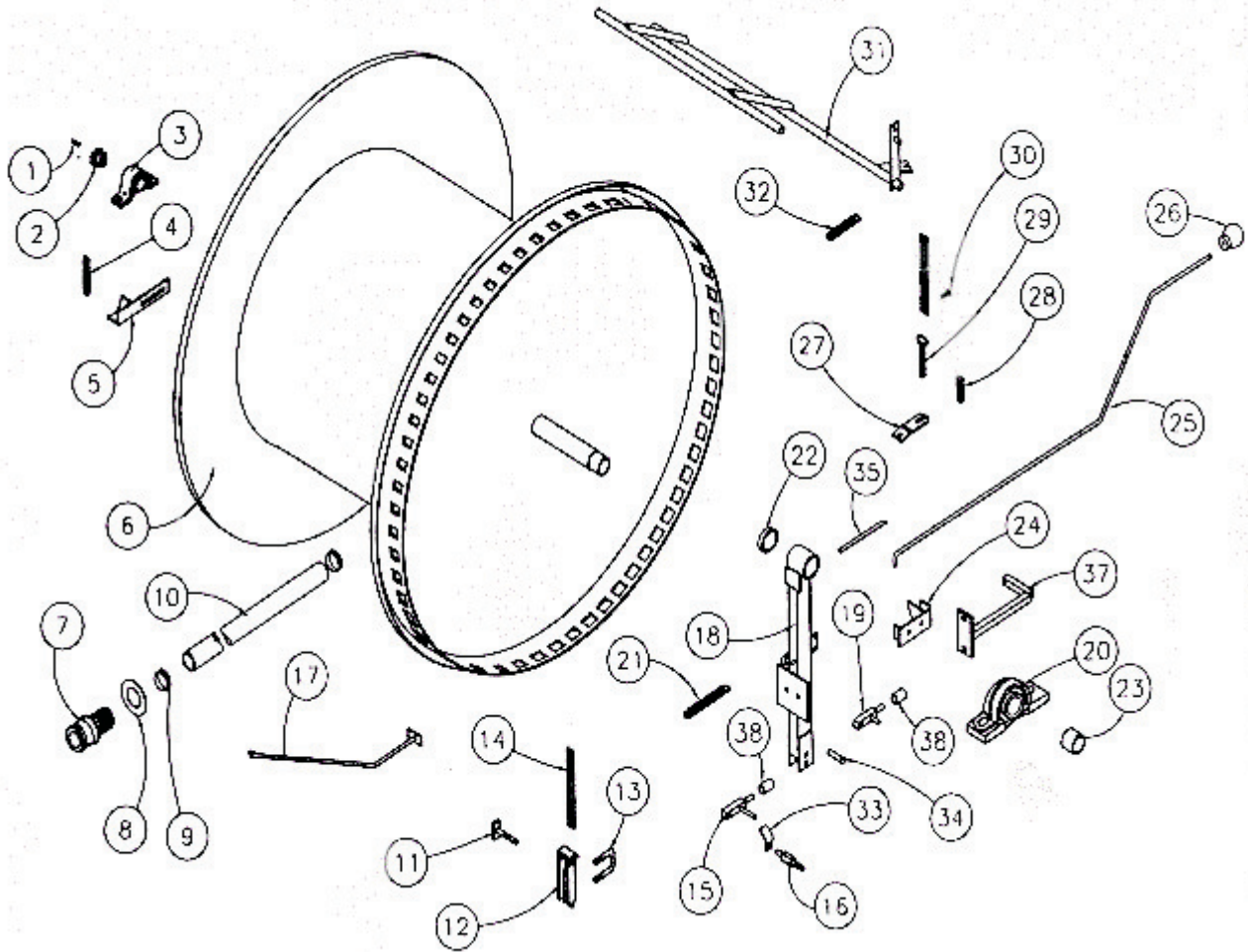
Water Motor Plumbing				
No.	Part Number	Description		Qty.
1	599-0177-0	Barb, Hose 3/4" Male NPT x 3/4" Hose		1
2	599-0155-1	Valve, Hi-Lo Speed		1
3	252-4939-3	Tube, Synflex 1/2"	Ft.	1.23
4	599-0176-0	Adpter, 3/4" Female NPT x 1/2 Male NPT		1
5	599-0175-0	Elbow, St. Brass 1/2" x 90 Deg. (Drilled & Tapped)		1
6	525-4917-6	FTG TB ST 3/8" Male NPT x 1/2" OD Tube		1
7	525-4915-0	FTG TB 90 Deg. 1/8" Male NPT x 1/4" OD Tube		2
8	525-4915-1	FTG TB 90 Deg. 1/4" Male NPT x 1/4" OD Tube		2
9	525-3214-1	Nipple, 1/4" x Close Brass		1
10	525-0267-2	Bushing, Rdcng Brass 1/2" x 1/4"		1
11	589-0068-1	Valve, Quick Exhaust		1
12	586-0978-6	Valve, Cycling		1
13	596-0011-0	Nipple, Brass 1/2" x 2"		1
14	525-4917-0	FTG TB 1/8" Male NPT x 1/4" OD Tube		3
15	252-4939-0	Tube, Synflex 1/4"	Ft.	8.5

## Water Motor Plumbing



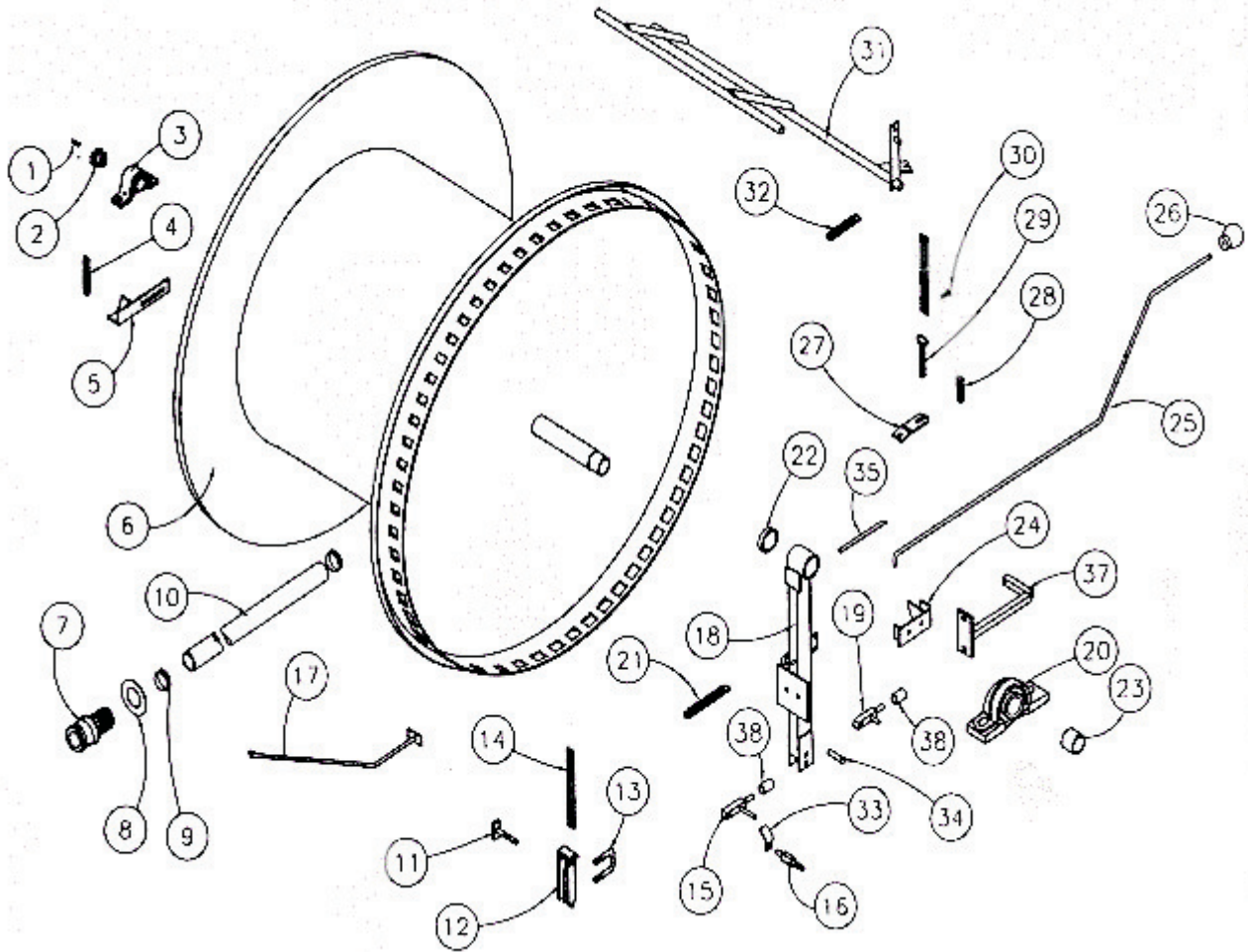
16	586-0988-5	Adapter Union 1/2" 8F x UFS		1
17	596-0012-0	Nipple, Bras 1/2"		1
18	592-0085-0	Bracket, Bellows Pipe		1
19	592-0128-0	Plate, Backing		1
20	592-0079-0	Plate, Bellows		1
21	525-4956-1	Bushing, Rdcng Brass 1/2" x 3/4"		1
22	586-0794-4	Bellows		1
23	592-0075-0	Bar		1
24	586-0922-2	Anchor, Discharge Hose		1
25	030-1904-7	Clamp, 23mm-25mm		2
26	595-0266-0	Hose, Corrugated 3/4"		1
27	594-0153-0	Valve, Pilot w/spool, stud, nuts & plate		1

## Spool and Drive Assembly



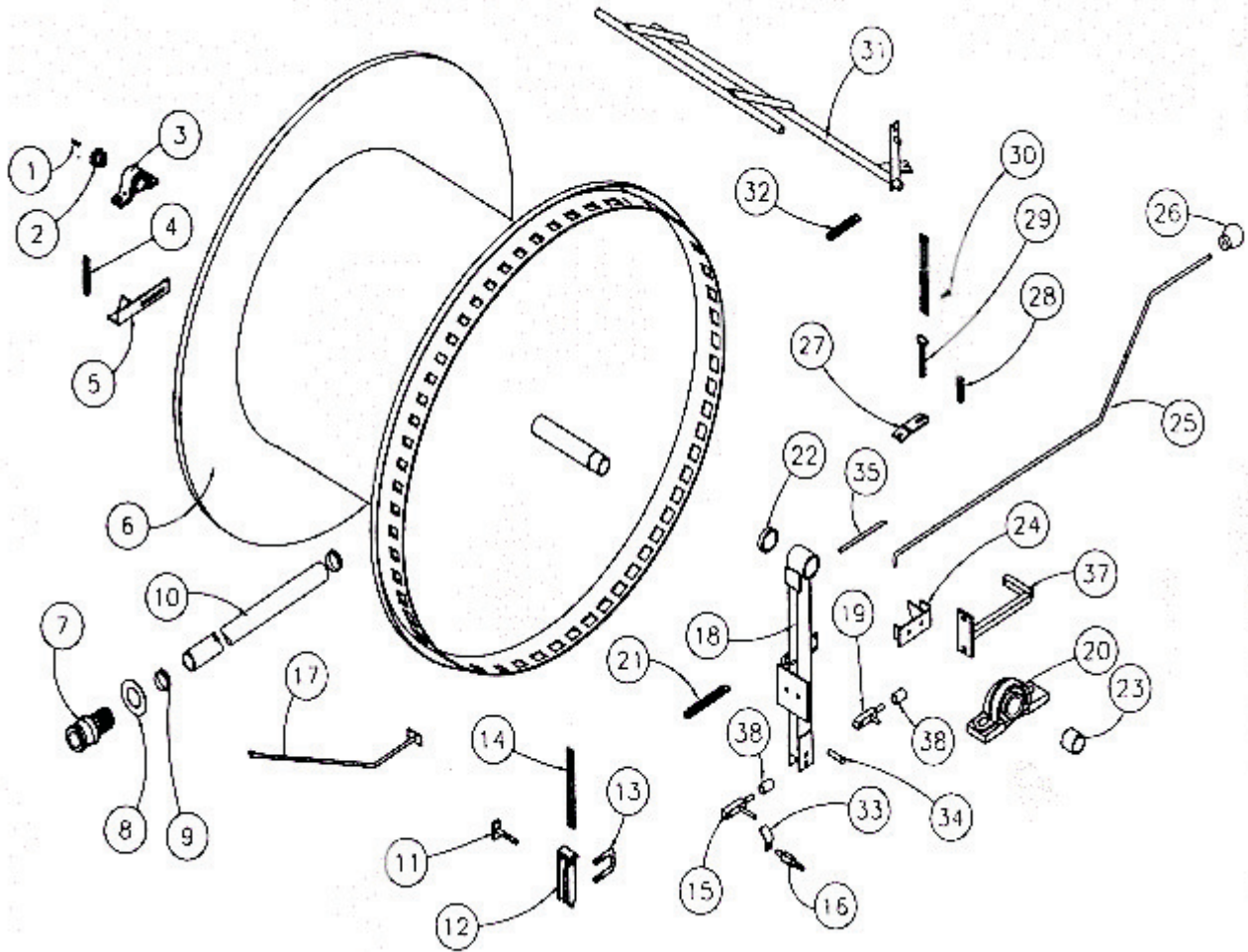
Spool and Drive Assembly				
No.	Part Number	Description		Qty.
1	563-3653-0	Key, 3/16 x 3/16 x 1"		1
2	880-4932-1	Sprocket, 40B12 5/8 bore		1
3	586-0983-1	Bearing, Pillow Block 1-1/4"		1
4	875-4845-0	Chain, #40 (144 Rollers)	Ft.	6
5	590-0262-0	Idler Chain Levelwind		1
6	598-0116-3	Spool, Bas B-50		1
7a	590-0242-2	Coupler, PE 1.8 Camlock 2" (B-180)		1
7b	590-0242-4	Coupler, PE 2.0 Camlock 2" (B-200)		1
7c	590-0242-5	Coupler, PE 2.1 Camlock 2" (B-210)		1
8a	592-019-0	Bushing, Mach 1-7/8 x 3-3/8 x 10 Ga (B-180)		1
8b	595-0224-0	Bushing, Mach 2. x 3-1/2 x 10Ga (B-200)		1
8c		Bushing, Mach ?-0 x ?-?/? x 10Ga (B-210)		
9a	030-1914-3	Clamp, 51-55 (B-180)		2
9b	030-1916-0	Clamp, 59-63 (B-200)		2
9c		Clamp, ??-?? (B-210)		
10a	584-0179-1	Tube, 1.8 ID x 500 Ft. (B-180)		1
10b	584-0180-0	Tube, 2.0 ID x 450 Ft. (B-200)		1
10c	599-0089-2	Tube, 2.1 ID x 400 Ft. (B-210)		1

## Spool and Drive Assembly



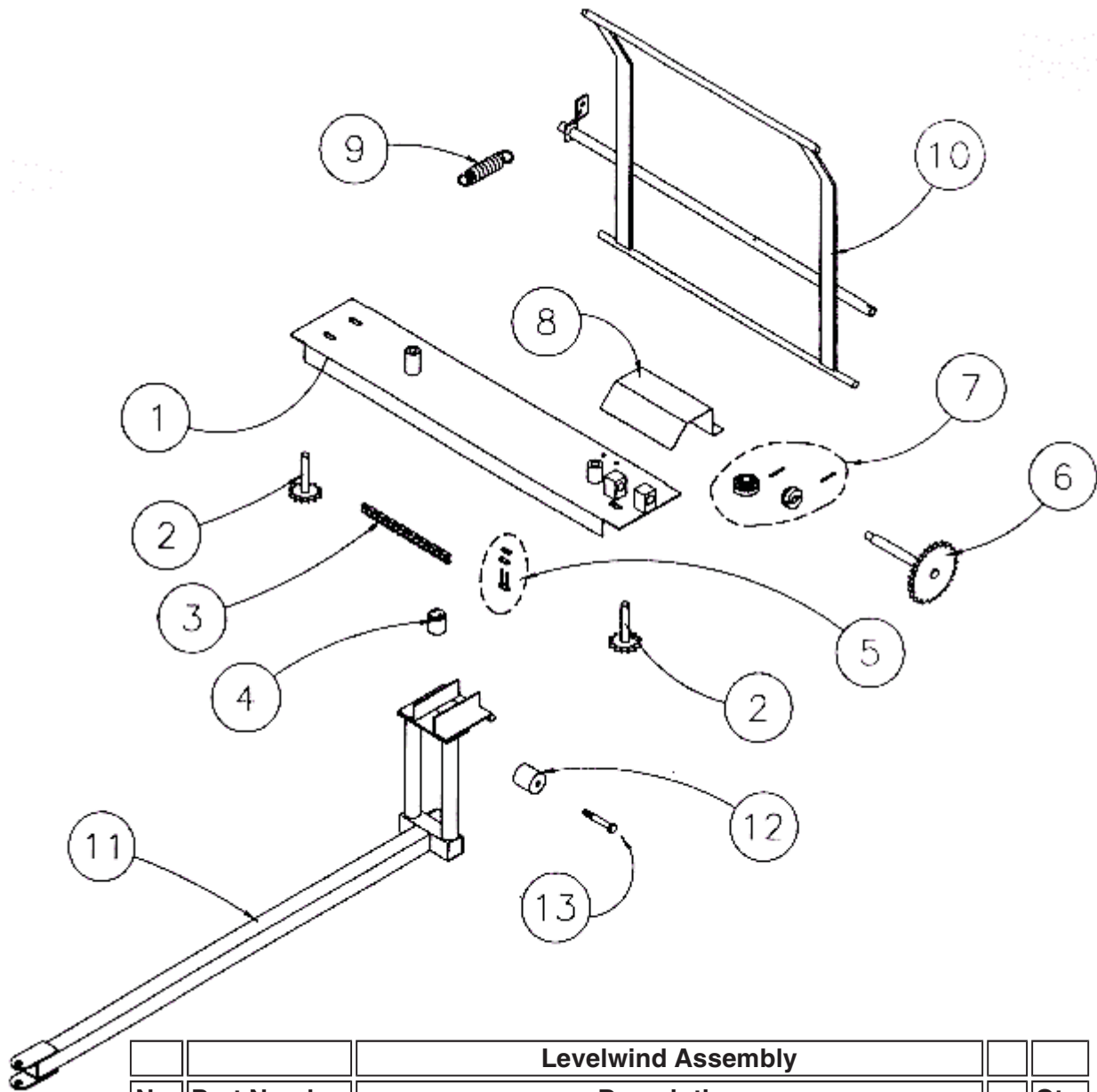
11	588-0502-0	Take Up, Brake		1
12	588-0505-0	Anchor, Brake Rear		1
13	587-0040-2	U-Bolt, 2-1/2		2
14	587-0167-0	Brake Belt	Ft.	7.34
15	586-0748-3	Pawl, Hold		1
16	586-0751-2	Pawl, Stud		1
17	592-0009-0	Rod, Shut Off		1
18	599-0072-0	Arm, Bellows B-50		1
19	5860748-0	Pawl, Drive		1
20	526-5189-0	Bearing, Pillow Block 2-1/4"		1
21	450-3536-5	Spring, 1-1/2 x 7 x .177		1
22	599-0145-0	Set Collar 2-1/4"		1
23	599-0058-0	Sleeve, Base B-50		1
24	592-0116-0	Valve, Striker		1
25	592-0090-0	Rod, Pawl Holdout		1
26	302-4915-0	Knob, Ball		1
27	587-0160-4	Brake, Bracket Front		1
28	450-4858-0	Spring, Comp 2-1/2 x 1/2 Pltd		1

## Spool and Drive Assembly



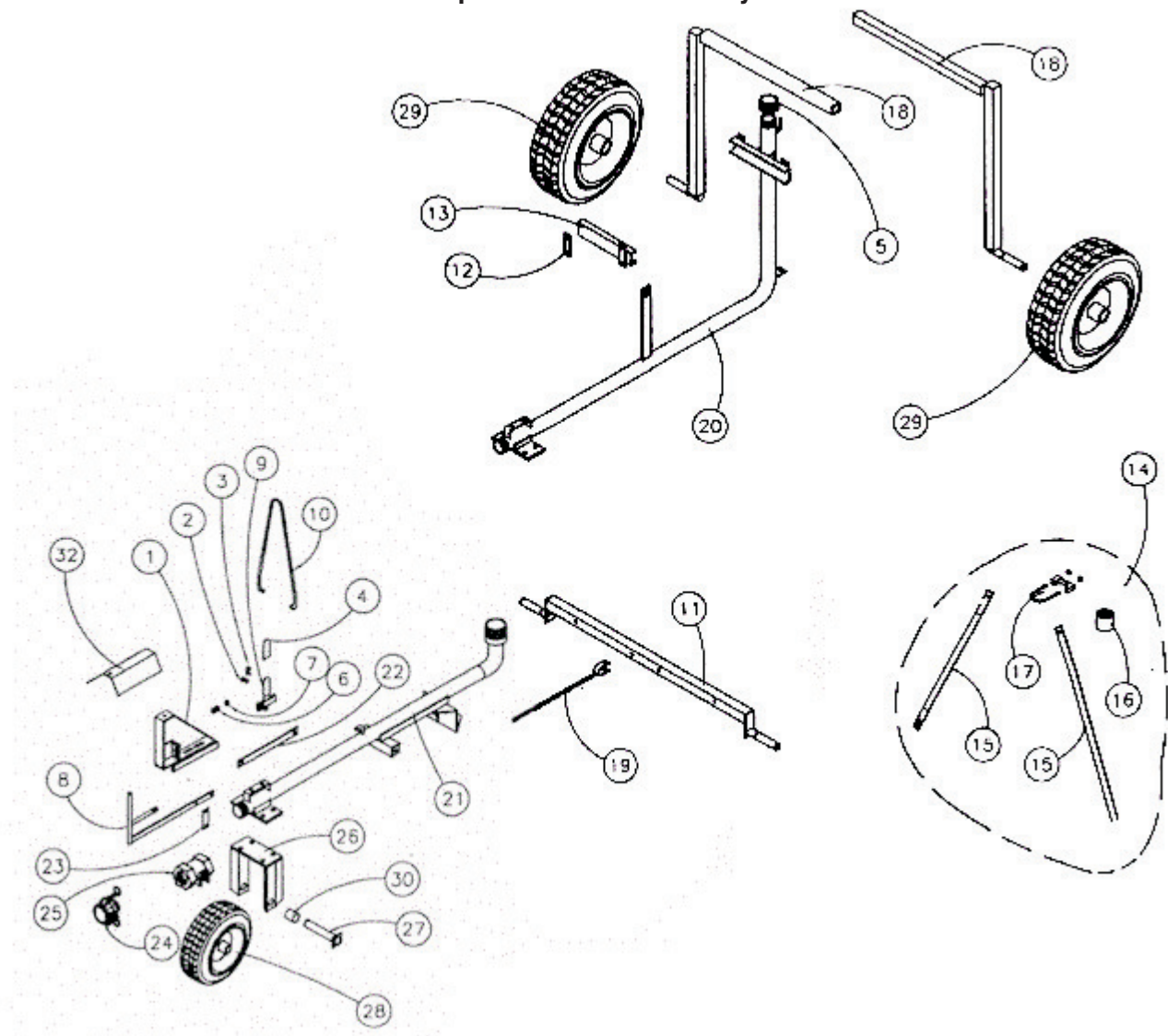
29	587-0162-2	Tensioner, Brake		1
30	523-5718-0	Bolt, 5/16 x 1 Grd 2 Step		1
31	592-0045-0	Tube Rider		1
32	450-1633-0	Spring		1
33a	500-0051-0	Stop, Dog		1
33b	500-0052-0	Tab, Pawl Stop ( Not Shown )		1
34	599-0191-0	Pin, Clevis 1/2 x 2.0		1
35	599-0149-0	Bearing, Bellows Arm		2
36	595-0153-0	Barb 200-180 (Not Shown)		1

## Levelwind Assembly



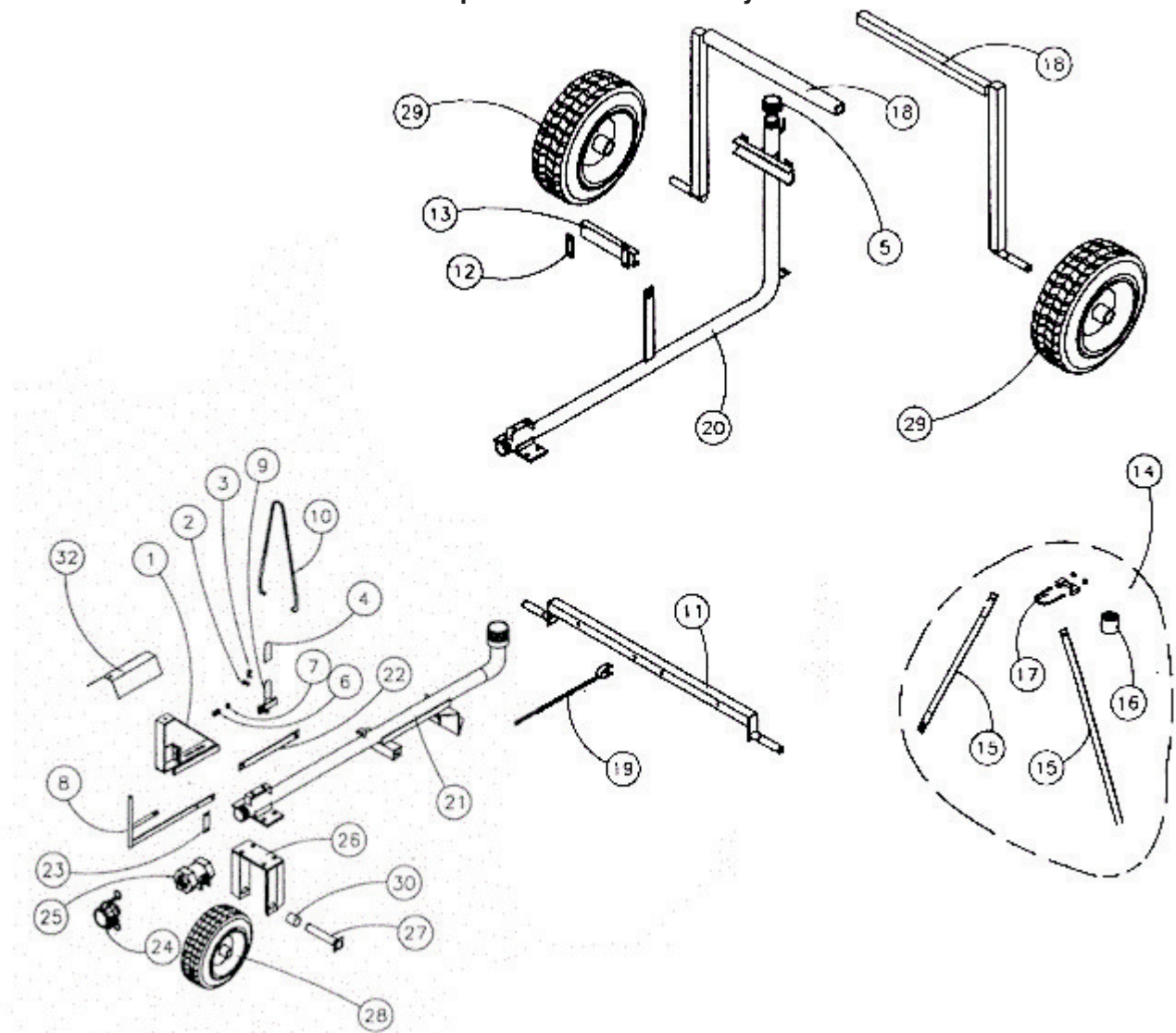
Levelwind Assembly				
No.	Part Number	Description		Qty.
1	592-0012-0	Frame Levelwind		1
2	586-0665-0	Shaft/Sprocket, Levelwind Drive		2
3	875-4845-0	Chain, #40 (109 Rollers)	Ft.	4.54
4	586-0876-0	Slug, Levelwind Guide		1
5	586-0972-0	Link, #40 Double Wide Connector		1
6a	586-0742-4	Shaft, Input Levelwind 24 Tooth Sprocket (B-180)		1
6b	586-0742-7	Shaft, Input Levelwind 22 Tooth Sprocket (B-200)		1
6c	586-0742-9	Shaft, Input Levelwind 20 Tooth Sprocket (B-210)		1
7	523-5744-0	Gear Group (4 Parts)		1
8	586-0808-0	Guard, Gear		1
9	587-0248-0	Spring		1
10	592-0004-0	Bar, Safety Shut Off		1
11A	586-0887-4	Levelwind Arm (B-180 & B-200)		1
11B	586-0887-5	Levelwind Arm (B-210)		1
12	587-0018-0	Roller, Tube Guide		1
13		Bolt, 3/8-16 x 2-1/2		1

## Sprinkler Cart Assembly



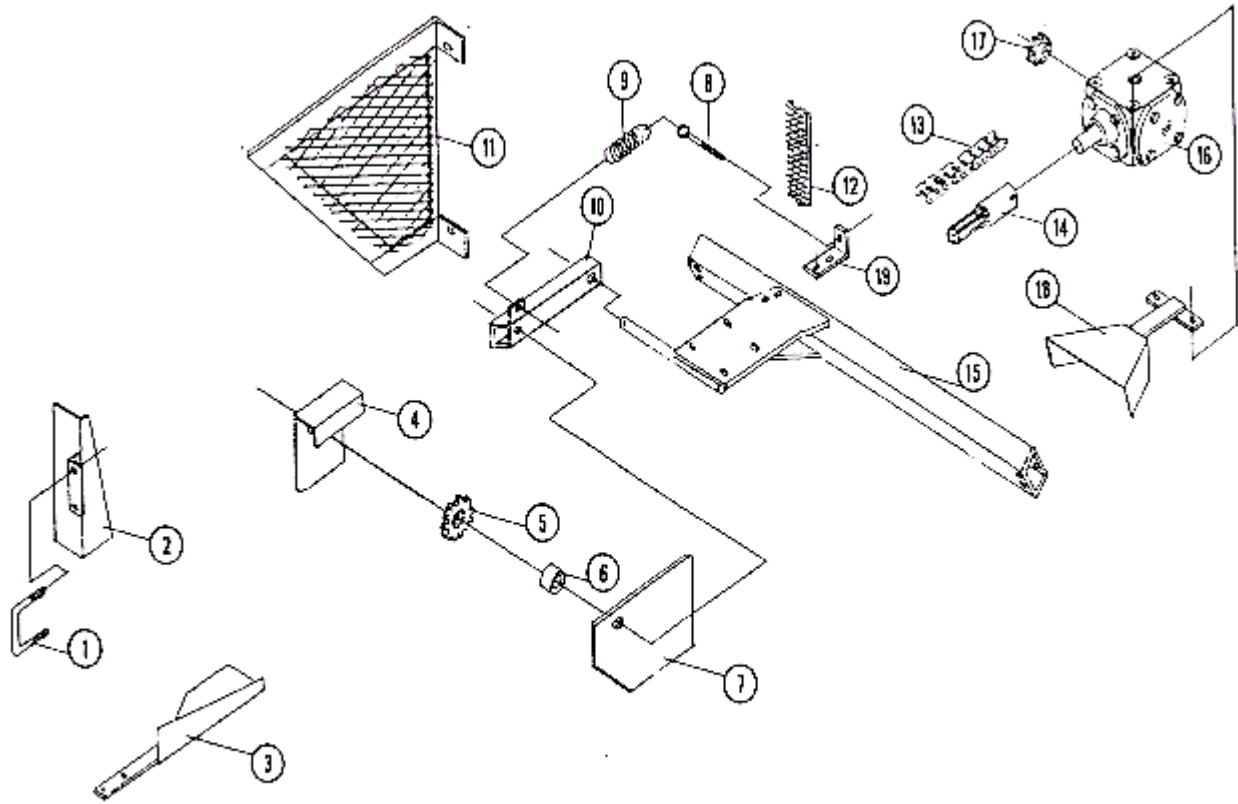
Sprinkler Cart Assembly			
No.	Part Number	Description	Qty.
1	590-0226-0	Bracket, Shut Off Rod	1
2	558-4846-0	Pin, Clevis 1/4 x 3/4	1
3	561-0204-1	Pin, Hair .0585 Wire Size	1
4	587-0150-0	Grip, .125 x 1 x 3 Mocap Black	1
5	585-0405-0	Bushing, Reducing 2" x 1-1/2"	1
6	551-0172-2	Nut, Tube 1/2"	1
7	552-0501-0	Nut, Nylock Half Lock 1/2"	1
8	590-0241-0	Shut Off Rod	1
9	586-0891-2	Handle Shut Off Rod	1
10	587-0004-4	Bail	1
11	586-0999-7	Axle, Guncart Low	1
12	587-0082-0	Strap	1
13	587-0083-0	Clamp	1
14	990-7004-1	Kit, B-180 Riser	1
15	590-0251-0	Brace	2
16	584-0135-0	Coupling, 2	1

## Sprinkler Cart Assembly



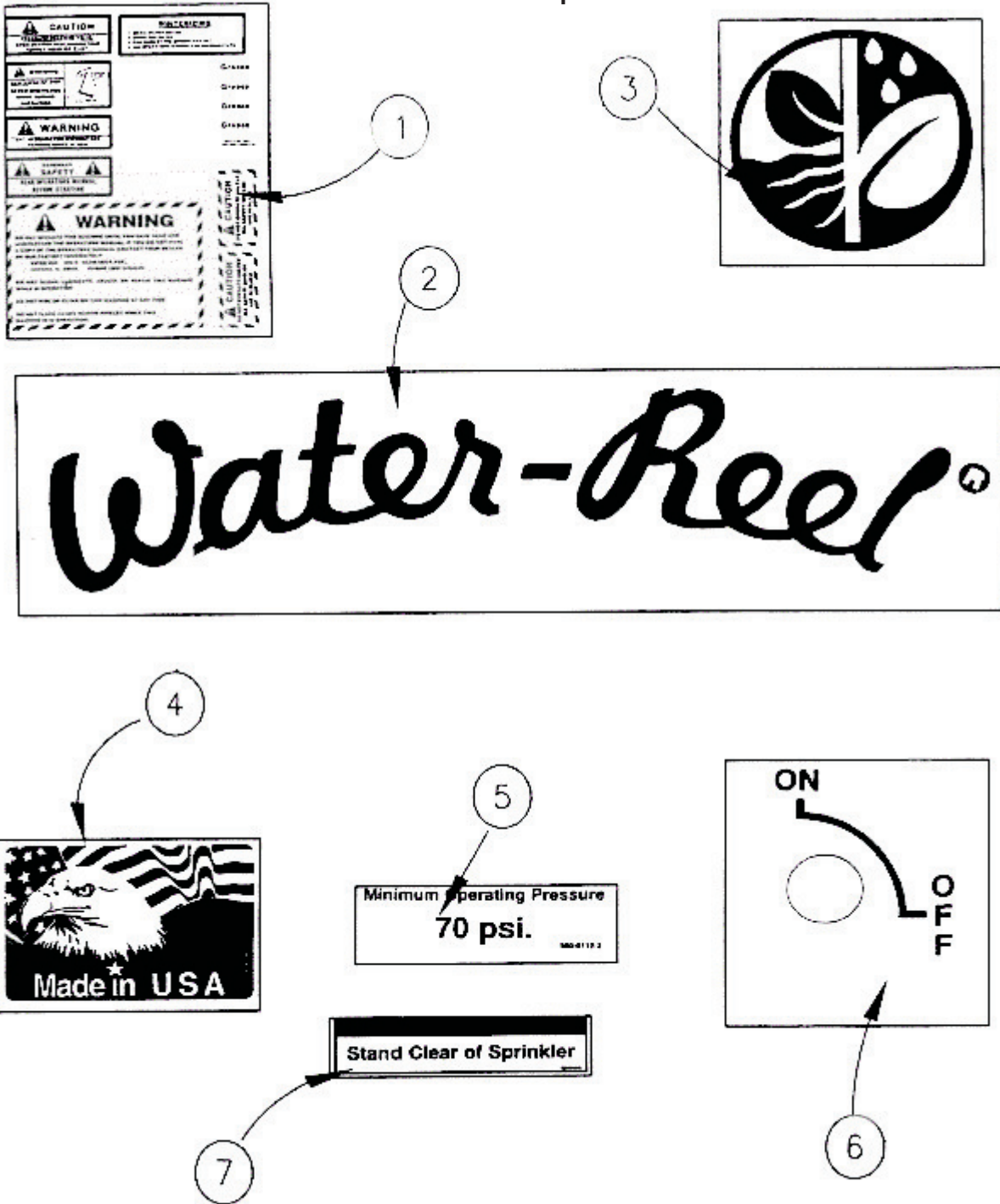
17	585-0147-0	Clamp, 2-1/4	1
18	586-0999-4	Axle, Guncart 160 H B-180	2
19	587-0097-0	Hitch	1
20	590-0235-2	Body Guncart, B-180 high	1
21	592-0066-0	Body Guncart, B-180 Low	1
22	590-0237-0	Link, Shut Off	1
23	526-5535-0	Lever, Vale 1-1/2 Butterfly	1
24	587-0100-1	Camlock, B FE 1-1/2 x 1-1/2 Male NPT	1
25	252-4935-1	Valve, Butterfly 1-1/2	1
26	588-0148-1	Yoke	1
27	586-0899-0	Axle, Front	1
28a	586-0811-0	Wheel & Tire 4 x 4.1 x 3.5 1B2P	1
28b	592-0284-0	Kit, Bearing 1 ID (Not Shown)	2
29a	586-0229-0	Wheel & tire 8 x 4 1B2PL	3
29b	592-0284-0	Kit, Bearing 1 ID (Not Shown)	3
30	586-0844-0	Spacer	2
31	526-5062-1	Sprinkler, Nelson SR100 (Not Shown)	1
32	596-0034-0	Shield, Decal	1

## PTO Kit



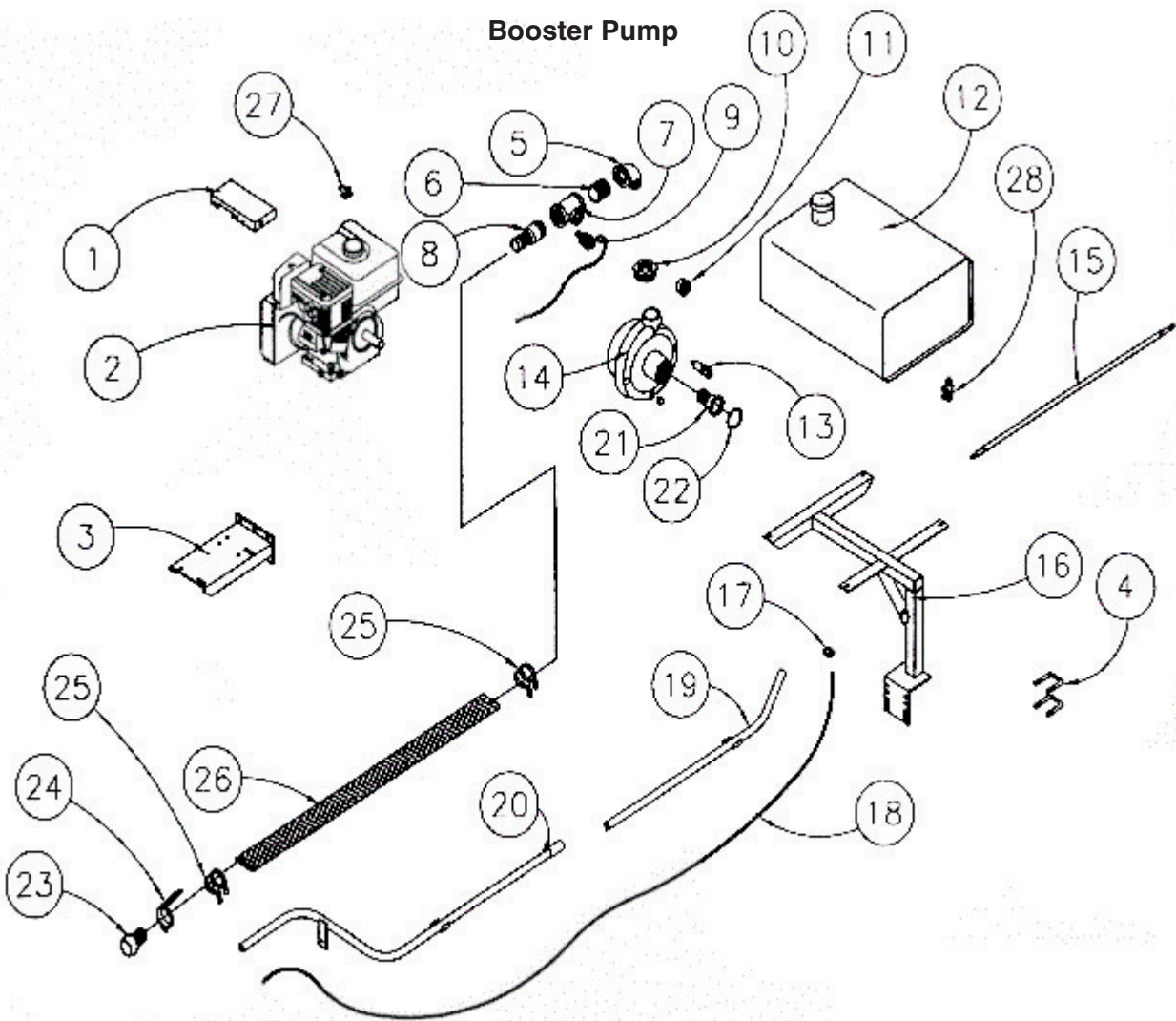
PTO Kit				
No.	Part Number	Description		Qty.
1	587-0040-2	Bolt, U 2-1/2 x 3/8 Sq.		1
2	592-0147-0	Guard, Chain Upper		1
3	592-0144-0	Guard, Chain Lower		1
4	592-0140-0	Guard, Idler (Inner)		1
5	880-1570-1	Sprkt, Idler 5017T 1/2 Bore		1
6	526-5251-0	Bushing, .56 x 1.0 x .5 Long		1
7	592-0141-0	Guard, Plate (Inner)		1
8	550-2481-2	Bolt, Eye 3/8 x 7		1
9	450-3536-5	Spring, 1-1/2 x 7 x .177		1
10	592-0125-0	Idler, Arm		1
11	592-0153-0	Guard, Screen Side		1
12	526-5418-9	Belting, 2.2 Per Ft.	Ft.	14.5
13	875-4846-0	Chain, #50 Per Ft.	Ft.	
14	302-3123-0	Adptr, PTO 1" Bore		1
15a	592-0123-1	Frame, Gearbox Mt.		1
15b	550-2471-0	U-Bolt, 3/8 x 3-3/4 (Not Shown)		8
16	598-0097-0	Gearbox, Peerless 1" Shafts		1
17	880-4863-0	Sprkt, 50 B11 1" Boer		1

## Decal Group



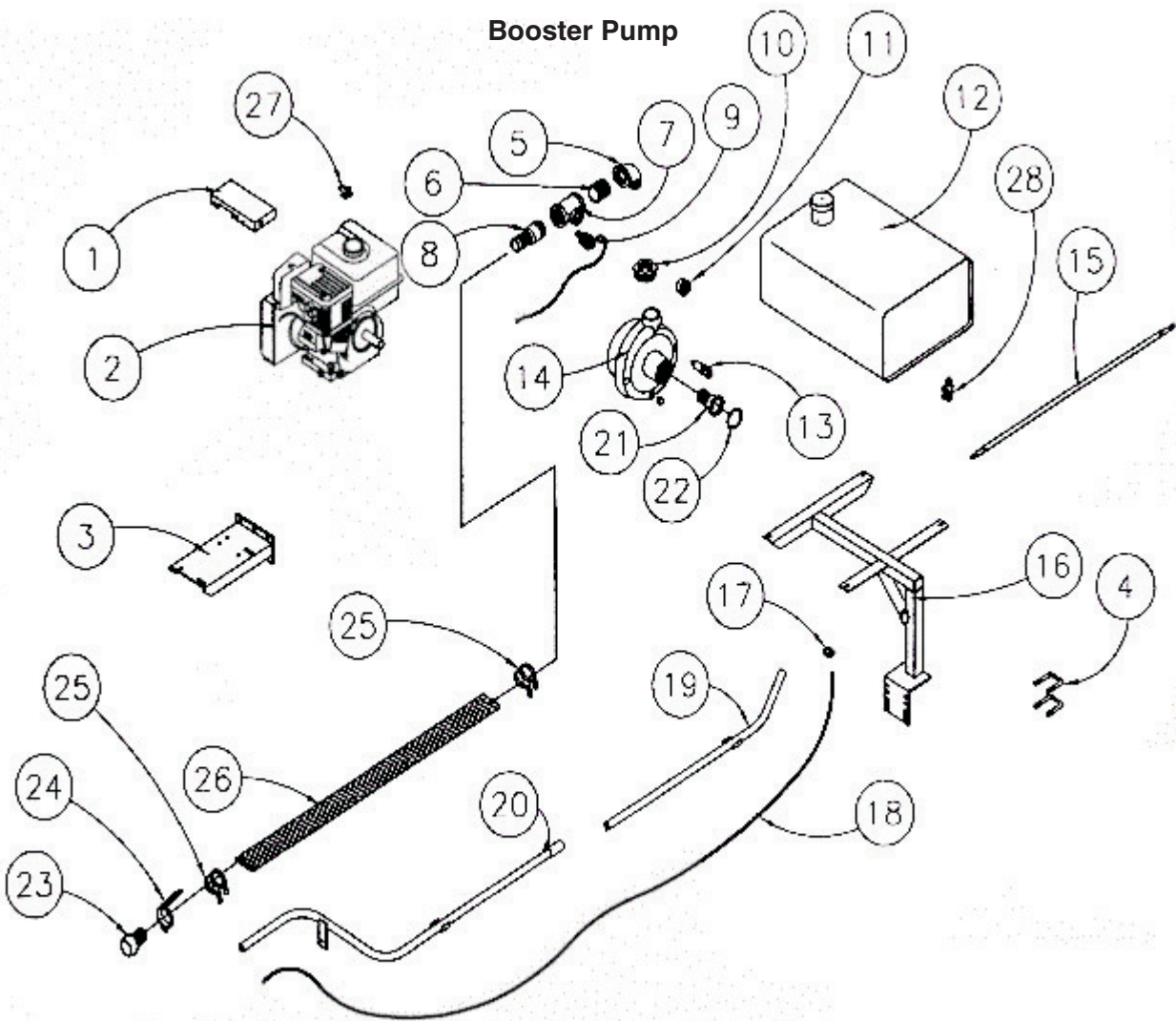
No.	Part Number	Decal Group Description	Qty.
1	587-0014-0	Decal, Sheet Warning & Operation	1
2	586-0743-0	Decal, Water-Reel	8
3	585-0299-3	Decal, Logo 10" Round	1
4	586-0821-2	Decal, Made in the USA 3.1 x 4.6	1
5	590-0112-2	Decal, Min. Operating Pressure	1
6	590-0279-0	Decal, Valve On/Off	1
7	596-0049-0	Decal, Stand Clear Sprinkler	1

## Booster Pump



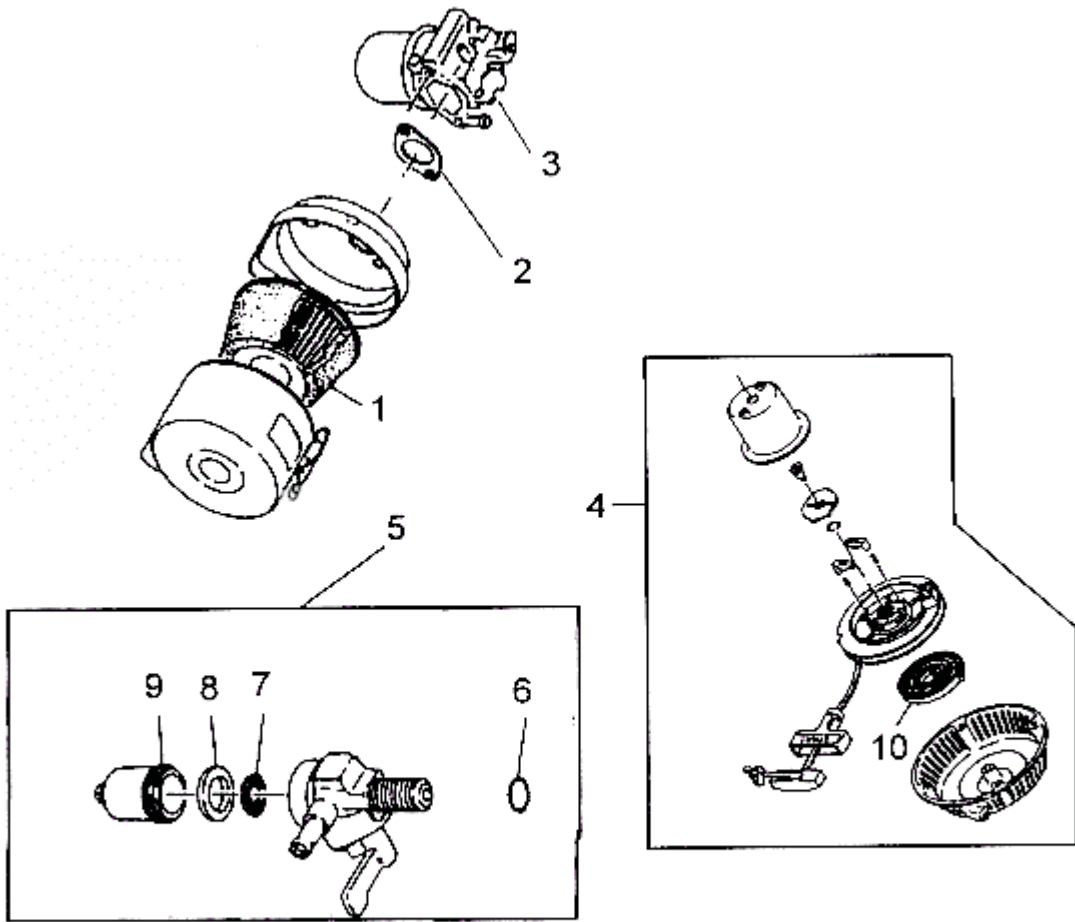
<b>Booster Pump</b>			
No.	Part Number	Description	Qty.
1	598-0140-0	Shield, Robin Choke	1
2a	598-0141-2	Engine, 8.5 HP Robin	1
2b	584-0701-3	Engine, 8.5 HP Honda	
3	599-0046-1	Pump Mt., 5.5, 8.5, & 9 HP	1
4	587-0040-2	Bolt, U Sq. 3/8 x 2-1/2 x 3-1/4	2
5	526-5274-0	Elbow, Street 1-1/2" x 90 Deg	1
6	525-0839-0	Nipple, Close 1-1/2"	1
7	594-0422-0	Tee, Reducing 1-1/2" x 1-1/2" x 1.0"	1
8	594-0427-0	Nipple Hose Expanding 2 to 1.5	1
9	594-0421-0	Switch, Paddle Flow	1
10	585-0405-0	Bushing, Reducing 2" x 1-1/2"	1
11	586-0674-2	Gauge, Press 0-160 Rear Mt.	1
12	599-0178-0	Fuel Tank 12 Gal. Steel	1
13	595-0669-0	Valve, Modified 1/4" Thermo	1
14	599-0068-1	Pump, ACGF-850V-LP	1
15	599-0157-0	Strap, Fuel Tank	2

## Booster Pump



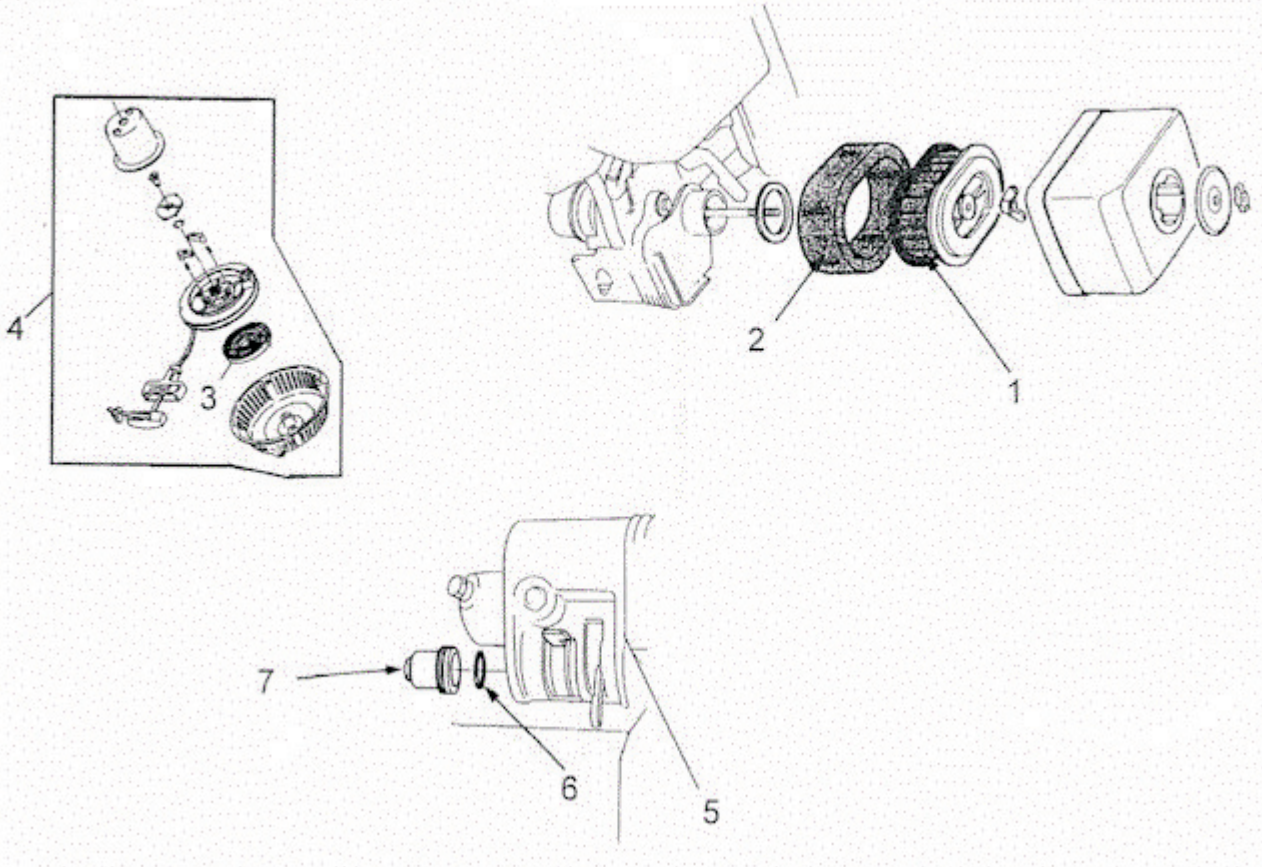
16	599-0173-0	Fuel Tank Mt. 200	1
17	060-1211-0	Clamp	2
18	584-0695-1	Hose, Gas 1/4" ID	9.2
19	599-0161-0	Gas Tube Rear	1
20	599-0164-0	Gas Tube Front	1
21	599-0136-0	Fitting, 2" Socket x 2" Barb	1
22	588-0021-3	Gasket, 2"	1
23	599-0135-0	Fitting, 2" Ball 2" Barb	1
24	588-0021-1	Lever Ring 2In 451 50mm	1
25	030-1915-1	Clamp 55mm to 59mm	4
26	586-0801-1	Hose, Irrigation Supply 2"	3.5
27	594-0423-0	Switch, Override Normal Closed	1
28	599-0213-0	Valve Assembly, Fuel	1

## Robin Engine Parts



Robin Engine Parts			
No.	Part Number	Description	Qty.
1	599-0209-0	Filter, Air	1
2	599-0210-0	Gasket	1
3	599-0211-0	Carburetor	1
4	599-0212-0	Rewind Assembly	1
5	599-0213-0	Valve Assembly, Fuel	1
6	599-0214-0	Rubber Gasket	1
7	599-0215-0	Screen	1
8	599-0216-0	Gasket, Bowl	1
9	599-0217-0	Bowl	1
10	599-0218-0	Spring, Rewind	1

## Honda Engine Parts



Honda Engine Parts			
No.	Part Number	Description	Qty.
1	599-0226-0	Filter, Air	1
2		Filter, Air (Comes with #1)	1
3	599-0225-0	Spring, Rewind	1
4	599-0224-0	Rewind Assembly	1
5	599-0223-0	Carburetor	1
6	599-0227-0	O-Ring	1
7	599-0228-0	Bowl, Fuel	1