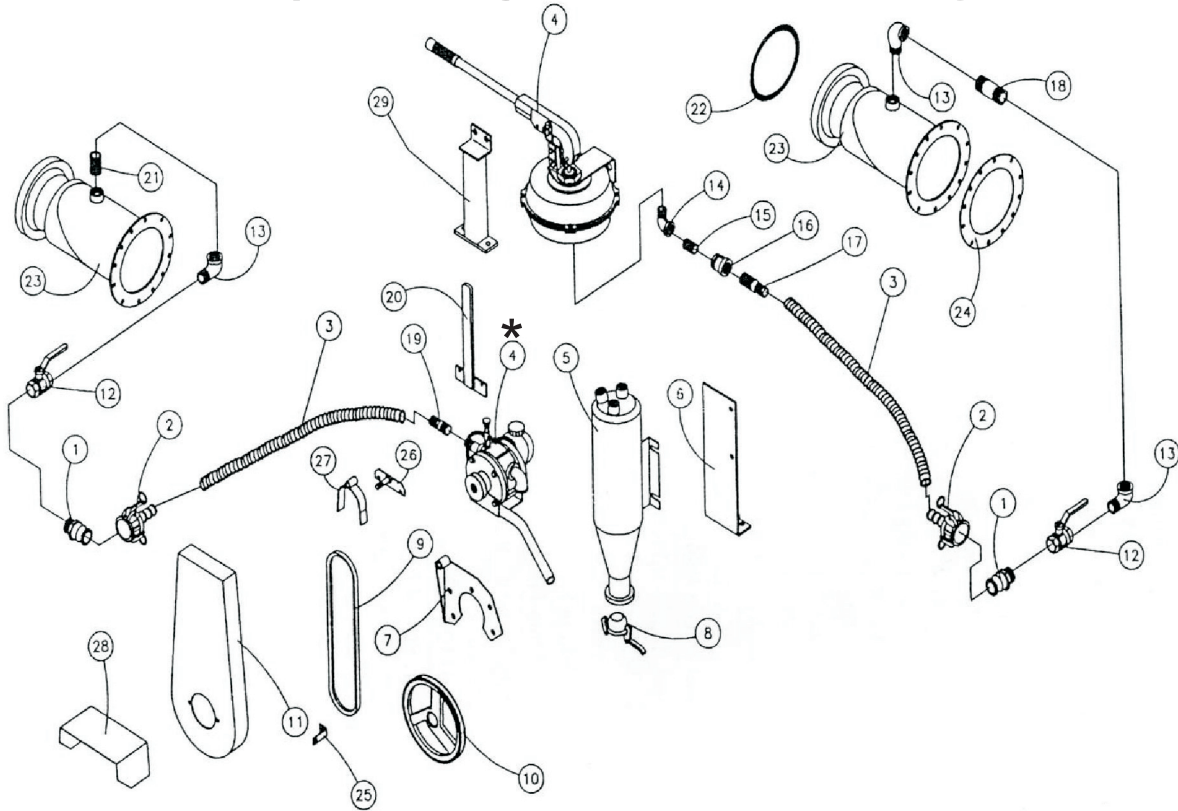
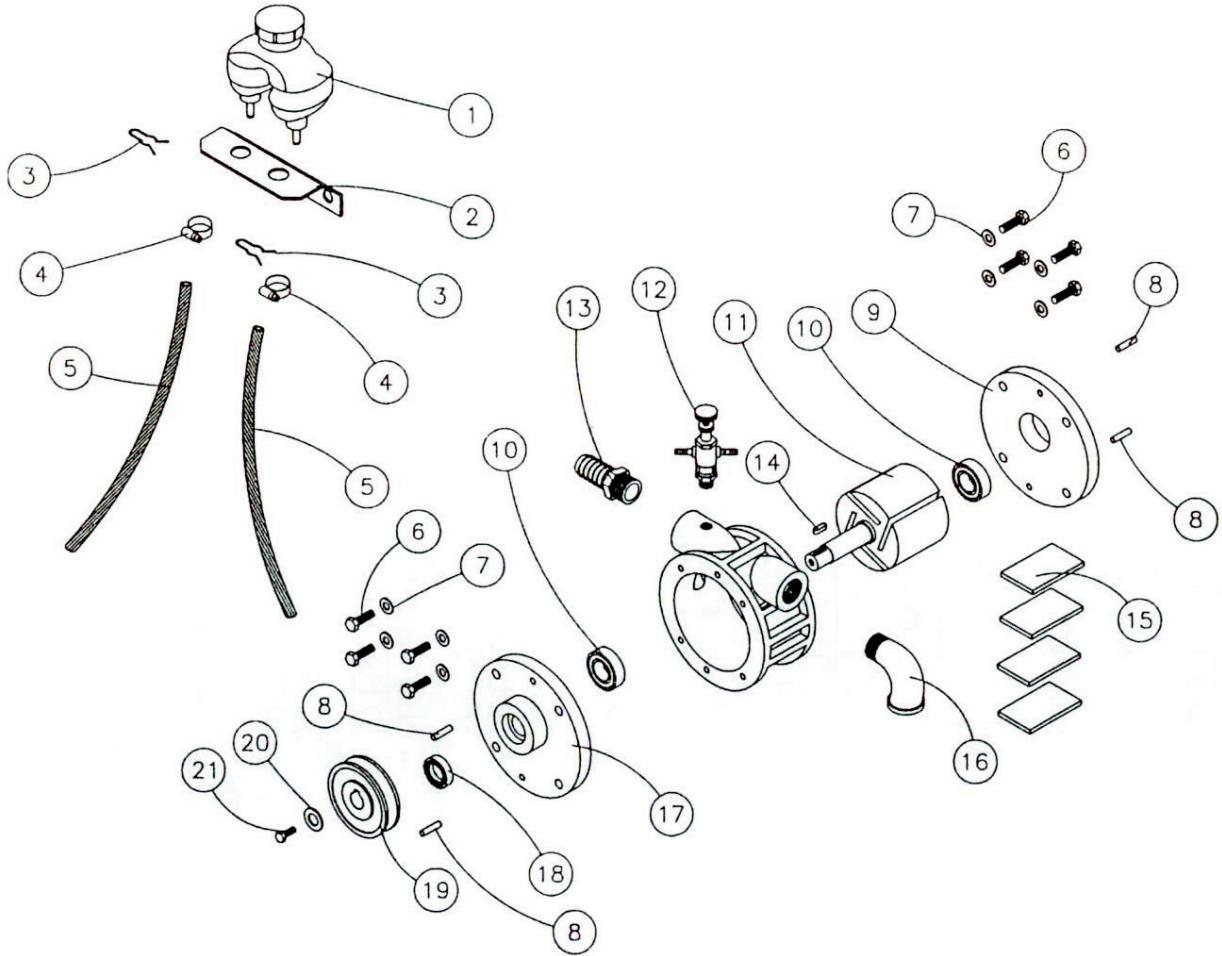


FRT/NT PUMP PRIMERS



No.	Part Number	Description	Qty.
1	586-0763-0	Cmlk., F Male 1" x 1" MNPT	1
2	586-0762-0	Cmlk., C Female 1" x 1" Hose	1
3A	586-0721-0	Hose, Suction 1" Tiger Flex (Power Pump)	Ft. 9.3
3B	586-0721-0	Hose, Suction 1" Tiger Flex (Hand Pump)	Ft. 6
4A	598-0031-0	Primer Pump (*see following page for break down)	1
4B	586-0726-0	Hand Primer Pump #9	1
5	598-0053-0	Tank	1
6	597-0129-0	Primer Pump Mt.	1
7	598-0054-0	Mt., Pump	1
8	598-0055-0	Plug , Ball	1
9	597-0207-0	Belt, 4L47	1
10	598-0056-0	Pulley	1
11	598-0057-0	Shield	1
12	586-0712-0	Valve, 1" Ball	1
13	525-4938-0	Elbow, Street 1"	1
14	525-0155-1	Elbow, Street 3/4"	1
15	525-0160-0	Nipple, Close 3/4"	1
16	525-1180-0	Coupling, Reducing Gal. 1" x 3/4"	1
17	586-0722-0	Nipple, King Plated 1" Stc10	1
18	593-0320-1	Nipple, Glv. 1" x 3-1/2"	1
19	587-0052-2	Barb, Tube 3/4" MNPT x 1" Tube	1
20	597-0205-0	Handle	1
21	586-0715-0	Nipple, Close 1"	1
22	588-0025-3	Sealing Ring 6" (8-1/4" OD x 3/4" CS)	1
23A	594-0430-0	Suction Ext. W/ Out Check Valve	1
23B	594-0193-0	Clack, Rubber (Not Shown)	1
23C	594-0194-0	Pin For Clack (Not Shown)	1
24	594-0186-0	Gasket, 12 Hole 9.3" BCD	1
25	597-0117-0	Bracket	1
26	597-0122-0	Belt Guide Mt.	1
27	597-0126-0	Belt Shield	1
28	597-0199-0	Shield	1
29	593-0301-0	Bracket, Primer (Hand)	1

POWER PRIMER



No.	Part Number	Description	Qty.
1	022-0605-0	Plastic Bottle With Cap	1
2	598-0043-0	Bracket	1
3	022-0667-0	Clip	2
4	030-1651-6	Clamp, Screw 8-16 5/16-5/8	4
5	022-0693-0	Tube, Plastic	2
6	550-7024-0	Bolt, 8-1.25mm x 25mm	8
7	598-0044-0	Washer, Flat 8mm (16mm OD x 8.4mm ID x 3mm Thick)	8
8	598-0045-0	Dowel Pin (.234" x .875 Long)	4
9	598-0046-0	Rear Head	1
10	598-0040-0	Bearing, 6004 2RS	2
11	598-0047-0	Rotary Piston	1
12	598-0048-0	Oil Lubricator	1
13	587-0052-2	Barb, Tube 3/4" MNPT x 1" Tube	3
14	598-0049-0	Key, 5mm x 15mm	1
15	598-0050-0	Vane	4
16	525-0155-1	Elbow, Street 3/4" NPT	3
17	598-0051-0	Front Head	1
18	598-0041-0	Seal	1
19	598-0042-0	Pulley 80mm OD x 18mm Shaft x 12mm wide belt	1
20	598-0052-0	Washer, Flat 24mm OD x 6.55mm ID x 2mm Thick	1
21	598-0062-0	Bolt, 6-1.0mm x 16.0mm	1