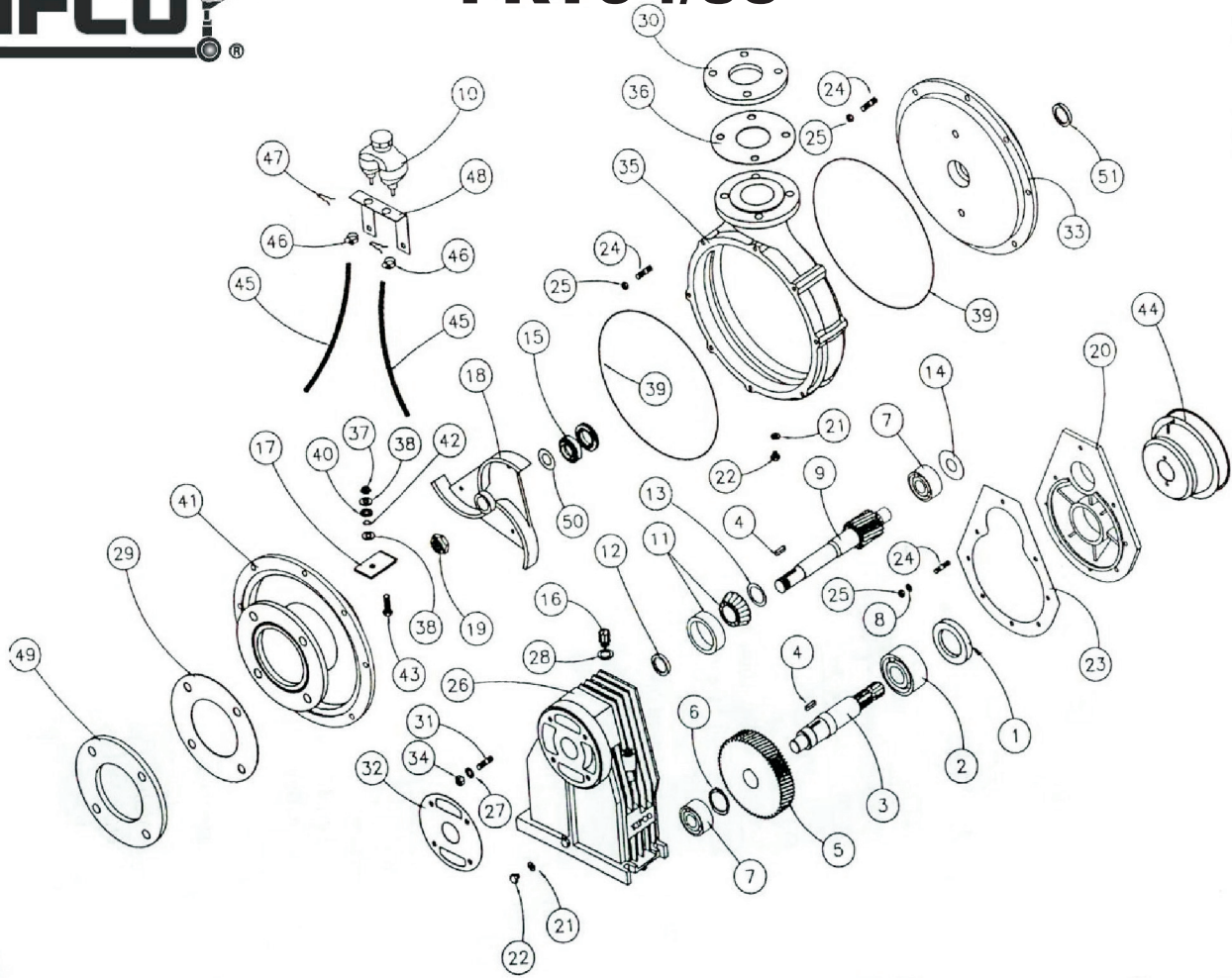
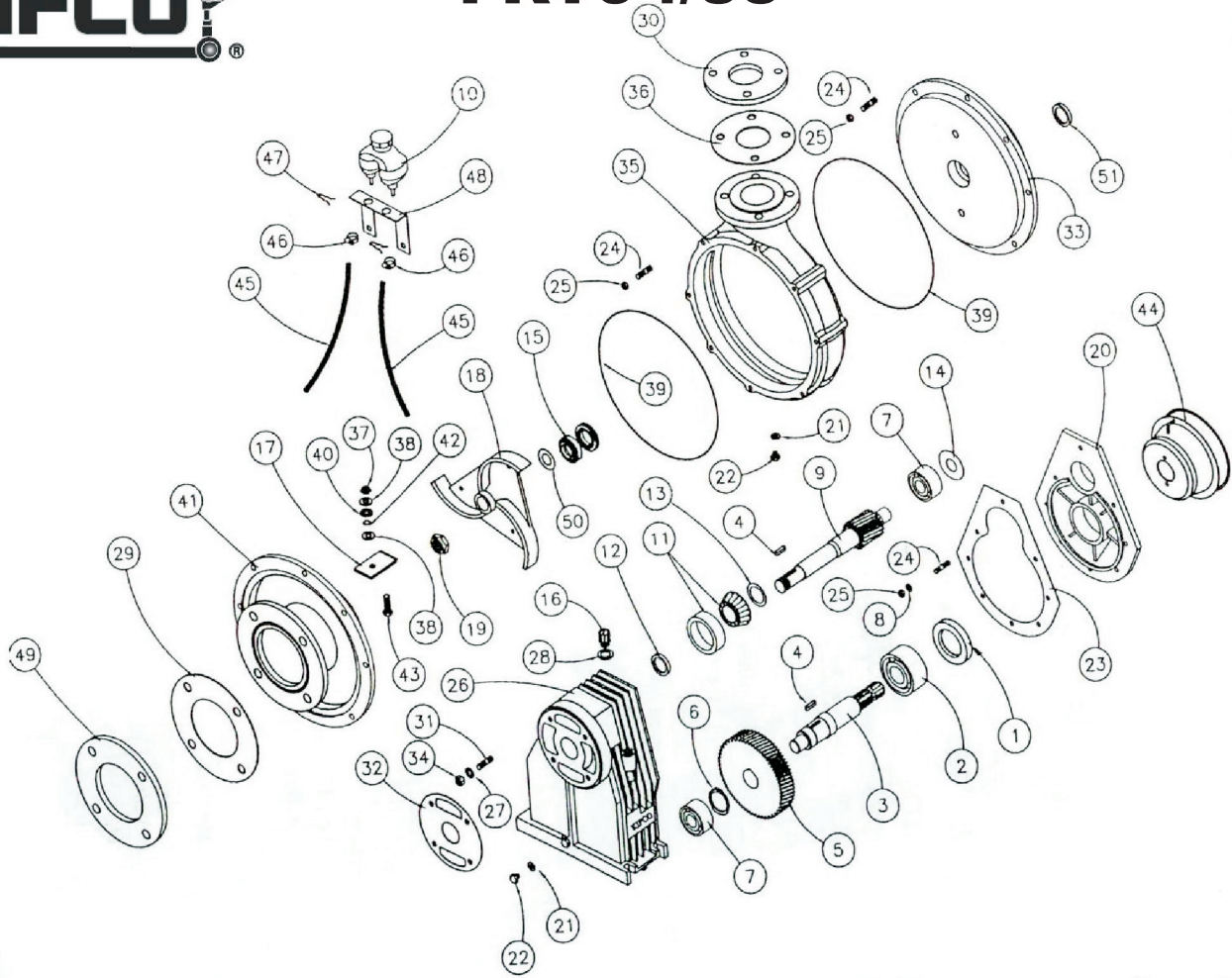


# FRT94/35



No.	Part Number	Description	Qty.
1	022-0056-0	Seal Oil 45mm x 62mm x 10mm	1
2	022-0069-1	Double Row Ball Bearing Fafnir# 5209K	1
3	022-0070-2	Input Shaft (PTO)	1
4	040-3143-4	Key, 8mm x 7mm x 30mm Round Ends	2
5A	040-3143-4	Ratio 1:1.55 2000 RPM ( Input Shaft )	1
5B	022-0071-0	Drive Gear ( 540RPM ) 68 Teeth	1
6	022-0058-0	Retaining Ring	1
7	022-0072-0	Bearing 5306K	1
8		Washer, Lock 10mm	24
9A	022-0074-0	Impeller Shaft ( 540 RPM ) 12 Teeth	1
9B	022-0074-1	Impeller Shaft ( 1000 RPM ) 19 Teeth	1
10	022-0605-0	Plastic Bottle With Cap	1
11	022-0075-1	Bearing	1
12	022-0060-0	Oil Seal 40mm x 62mm x 10mm	1
13		Machine Bushing ( When Needed )	1
14	598-0024-0	Shim, 2"ID x 2-3/4" OD x .020" Thick ( When Needed )	
15	022-0055-0	Mechanical Seal	1
16	022-0064-1	Oil Filter Cap	1
17	594-0435-0	Knife, ( 540 & 1000 RPM )	1
18A	022-0082-2	Impeller ( 540 & 1000 RPM ) Full Size 13.687" Dia.	1
18B	022-0082-4	Impeller (used on FRT 540/1000 RPM) Skimmed 12.32 Dia.	1
19A	022-0083-0	Impeller Nut Right Hand Thread (used on 540 & 1000 RPM)	1
19B	022-0083-1	Impeller Nut 30X1.5LH 2000 RPM)	1
20	022-0084-0	Gearbox Cover	1
21	022-0085-0	Sealing Washer	1
22	022-0086-0	Oil Level Plug	6
23	022-0061-0	Gearbox Gasket	1
24	022-0062-1	Stud 12-1.75mm x 42mm	24

# FRT94/35



No.	Part Number	Description	Qty.
25	022-0092-0	Nut, 12-1.75mm	24
26	022-0088-0	Gearbox Housing	1
27	584-0175-1	Washer, Lock 10mm	1
28		Washer, Oil Fill	1
29	593-0181-1	Gasket, 4 Hole 8.3BCD	1
30	040-5462-8	Flange, 65mm Heavy 5.72 BCD	1
31	022-0062-0	Stud 10-1.5mm x 43mm	4
32	022-0066-0	Gasket	1
33	022-0091-1	Bell Housing	1
34	022-0087-0	Nut, 10-1.5mm	4
35	022-0093-1	Pump Volute Case	1
36	593-0180-0	Gasket, 4 Hole 5.72 BCD	1
37	552-0501-0	Nut Jam Nylock, 1/2-13NC	1
38		Washer, Flat 1/2"	1
39	022-0068-1	O-ring 14" Id x 1/8 Cross Section Minor Rubber co # 0-2574	2
40	598-0022-0	Washer, Sealing 1/2" For Nuts & Washers	1
41	022-0097-1	Suction Cover	1
42	586-0252-6	O-Ring, 11/16" OD x 1/2" ID x 3/32"	1
43		Bolt, 1/2-13 NC x 1-1/2" Long Grade 5	1
44	502-0095-1	Shield, PTO	1
45	022-0693-0	Tube. Plastic	2
46	030-1651-6	Clamp, Hose	2
47	022-0667-0	Clip	2
48	598-0043-0	Bracket	1
49	040-5463-4	FLANGE, 125MM 8.31BCD	1
50	598-0025-0	Shim, 42mm x 30mm x .3mm ( When Needed )	1
51	598-0023-0	Seal, 35mm x 50mm x 8mm	1