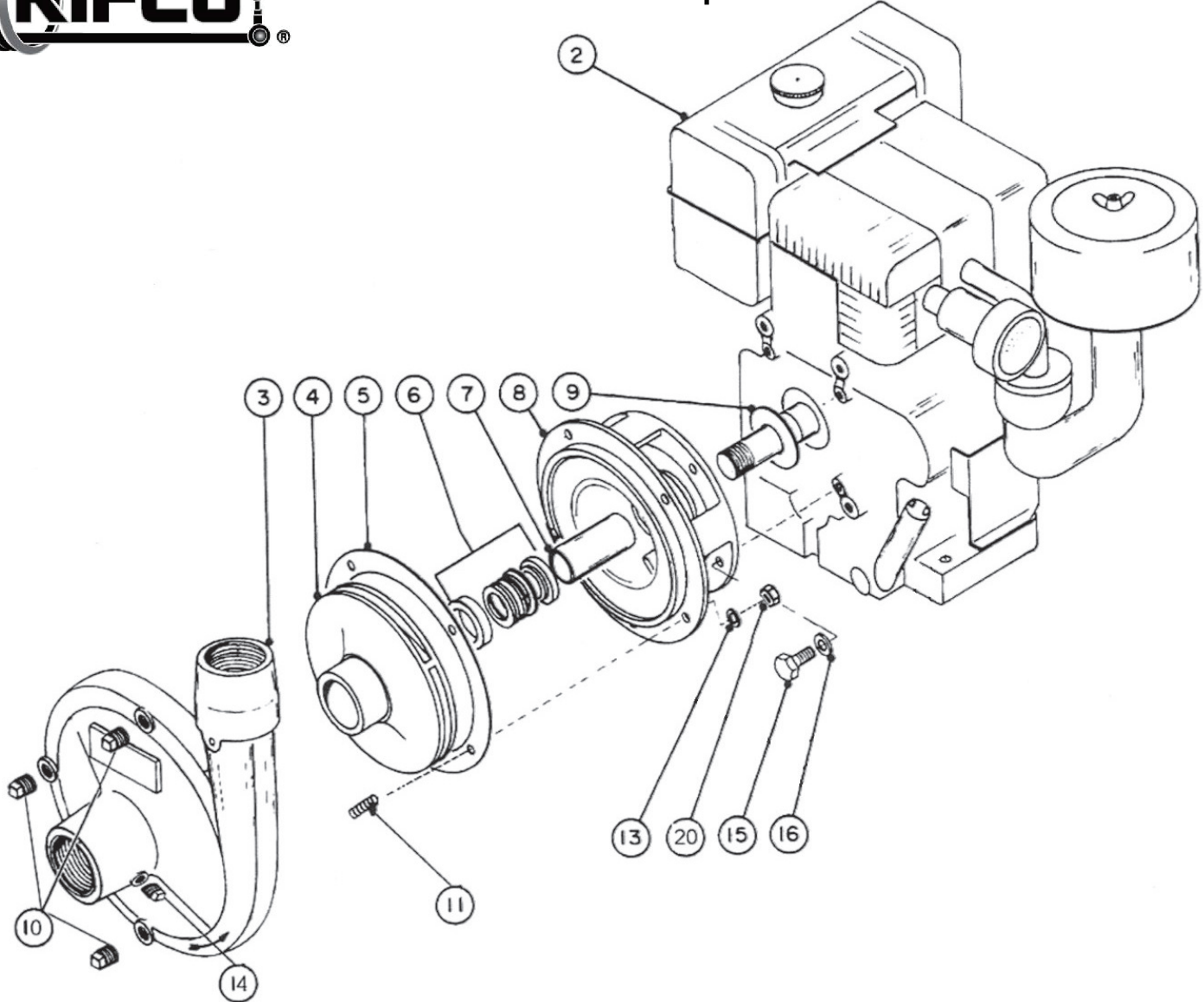




# 5.5 & 9.0HP Booster Pump Break Down



No.	Part Number	Description	Qty.
2a	59402560	ENG,HONDA 5.5 THREADED PUMP SHAFT	1
2b	58407013	ENGINE,HONDA 8HP W/PMP SHT	1
3	59402570	CASING, 1-1/2X2	1
4a	59504160	IMPELLER, 6.1X5/8 5.5HP	1
4b	59504161	IMPELLER, 6.4 X 1" 8.5HP	1
5	59402520	O-RING PARKER2-165 M PUMP	1
6a	59402530	SEAL,MECHANICAL3/4"MNRCH	1
6b	59402531	SEAL,MECHANICAL 1-1/4"	1
7a	59504170	SLEEVE,3/4X1.6" 5.5HP	1
7b	59504171	SLEEVE,1-1/4 X 2.1" 8-1/2/9HP	1
8a	59402600	ADPTR, FOR 5.5 HP	1
8b	59402601	ADPTR, FOR 8.5 HP	1
9a	59402500	FLINGER 1-1/4X3/4X1-1/16	1
9b	59402501	FLINGER, 8-1/2 AND 9 HP PUMPS	1
10		Drain plug 1/4" NPT	1
11a	59402610	STUD,3/8UNC X 1-1/2	4
11b	59402620	STUD 3/8UNC X 1-1/4	4
13		Washer, Lock 3/8"	4
14		Drain Plug, 1/8" NPT	1
15		Bolt, 5/16 UNF x 3/4	4
16	59600010	Washer, Bonded Seal Washer	4
20		Nut, 3/8" UNC	4