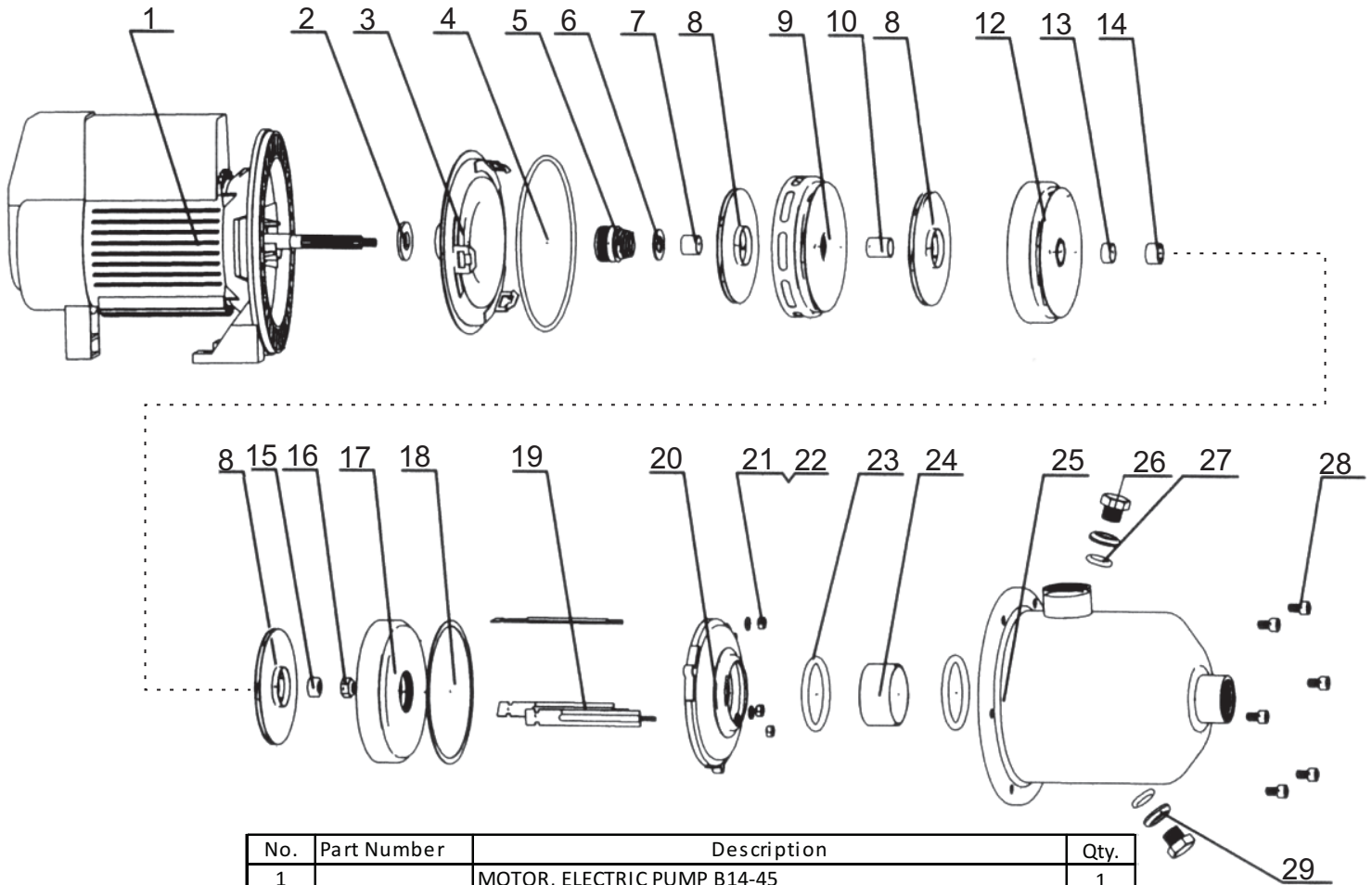




1.0 HP Electric Booster Pump Break Down



No.	Part Number	Description	Qty.
1		MOTOR, ELECTRIC PUMP B14-45	1
2		SLINGER, ELECTRIC PUMP B14-45	1
3		BACK COVER, ELECTRIC PUMP B14-45	1
4		O-RING, CASING - ELECTRIC PUMP B14-45	1
5		MECH SEAL, ELECTRIC PUMP B14-45	1
6		MECH SEAL PLATE, ELECTRIC PUMP B14-45	1
7		SHAFT SLEEVE 4, ELECTRIC PUMP B14-45	1
8		IMPELLER, ELECTRIC PUMP B14-45	3
9		DIFFUSER 3, ELECTRIC PUMP B14-45	1
10		SHAFT SLEEVE 3, ELECTRIC PUMP B14-45	1
12		DIFFUSER 2, ELECTRIC PUMP B14-45	1
13		SHAFT SLEEVE 2, ELECTRIC PUMP B14-45	1
14		SHAFT SLEEVE, PLAIN - ELECTRIC PUMP B14-45	1
15		SHAFT SLEEVE 1, ELECTRIC PUMP B14-45	1
16		IMPELLER NUT, ELECTRIC PUMP B14-45	1
17		DIFFUSER 1, ELECTRIC PUMP B14-45	1
18		GASKET, ELECTRIC PUMP B14-45	1
19		TENSION BAR, ELECTRIC PUMP B14-45	3
20		FRONT COVER, ELECTRIC PUMP B14-45	1
21		WASHER, CASING - ELECTRIC PUMP B14-45	6
22		NUT, ELECTRIC PUMP B14-45	6
23		O-RING, INNER - ELECTRIC PUMP B14-45	1
24		TUBE, INNER - ELECTRIC PUMP B14-45	1
25		CASING, ELECTRIC PUMP B14-45	1
26		PLUG, DRAIN - ELECTRIC PUMP B14-45	2
27		O-RING, DRAIN PLUG - ELECTRIC PUMP B14-45	2
28		CASING SCREW, ELECTRIC PUMP B14-45	6
29		WASHER, DRAIN PLUG - ELECTRIC PUMP B14-45	2
**Not shown			
**	50801751	ELECTRIC PUMP BF14/45 FLOW SWITCH	1